

V&V Reference Report

L2 ASCDS Version : 10.6

Observation 20954 - L2 Version 1
Chandra X-Ray Center

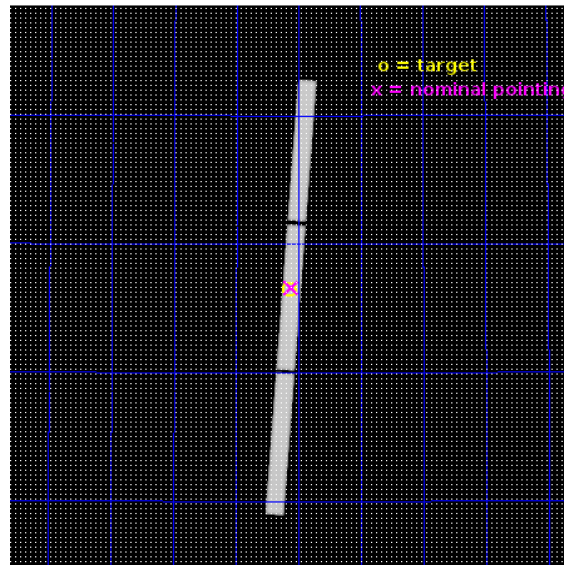
L2 Processing Date : Feb 10 2018

Contents

1	Front	2
2	OBI	3
2.1	OBI	3
2.1.1	Images	3
2.1.2	Parameters	4
2.1.3	Events	4
2.2	Compared Parameters	5
2.3	Aspect	6
2.4	Star Slots	9
2.4.1	Slot 3	9
2.4.2	Slot 4	10
2.4.3	Slot 5	11
2.4.4	Slot 6	12
2.4.5	Slot 7	13
2.5	FID Slots	14
2.5.1	Slot 0	14
2.5.2	Slot 1	15
2.5.3	Slot 2	16
3	Gratings	17
3.1	LETG Arm	17
A	Summary	19
A.1	Status	19
A.2	Comments	19

1 Front

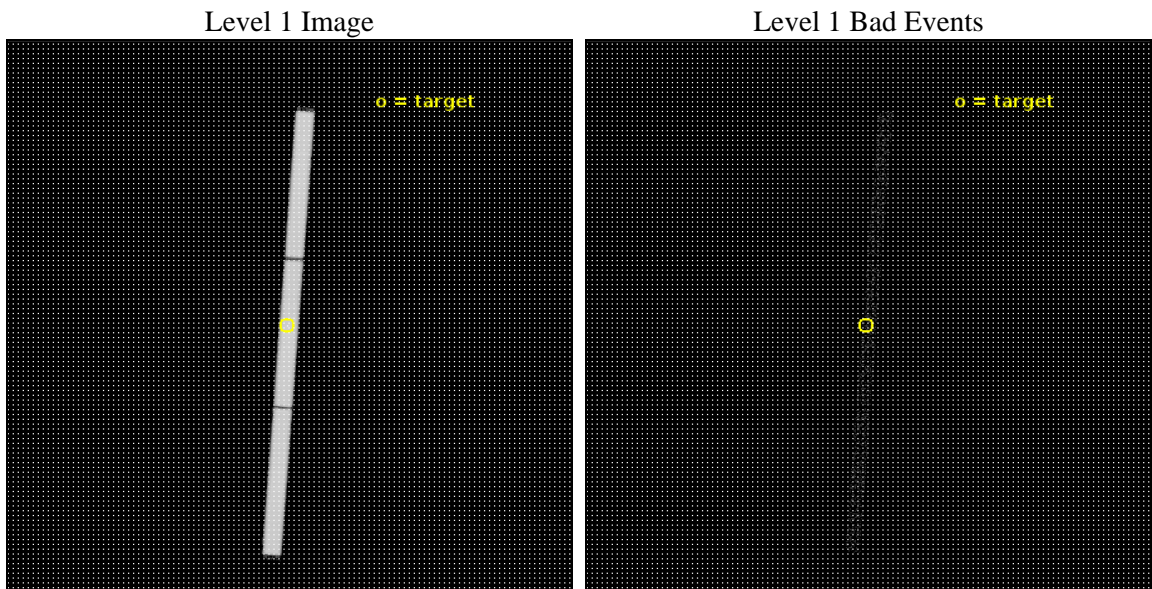
seq_num	703315	Sequence number
obs_id	20954	Observation id
title	Chandra observations of a unique X-ray WHIM absorber towards PG 1116+215	Proposal title
observer	Massimiliano Bonamente	Principal investigator
object	PG 1116+215	Source name
ra_targ	169.78625	Observer's specified target RA [deg]
dec_targ	21.321667	Observer's specified target Dec [deg]
ra_nom	169.77865628398	Nominal RA [deg]
dec_nom	21.330065308648	Nominal Dec [deg]
roll_nom	94.070100651313	Nominal Roll [deg]
revision	1	Processing version of data
ontime	30132.183014512	[s]
livetime	29844.387849431	Ontime multiplied by DTCOR
l2events	2585653	Number of level 2 events



2 OBI

2.1 OBI

2.1.1 Images



2.1.2 Parameters

obi_num	0	Obi number	sched_exp_time	30000.000000	[s] Scheduled observation exposure time
ascdsver	10.6	Processing system revision	ontime	30132.183024526	[s]
caldbver	4.7.7	 	l1events	3304605	Number of level 1 events
date	2018-02-10T04:37:16	Date and time of file creation	tgmethod	TGDETECT	Method used to create src1a file
revision	1	Processing version of data	zo_pos	(32572.60, 32532.55)	src1a sky pixel position

2.1.3 Events

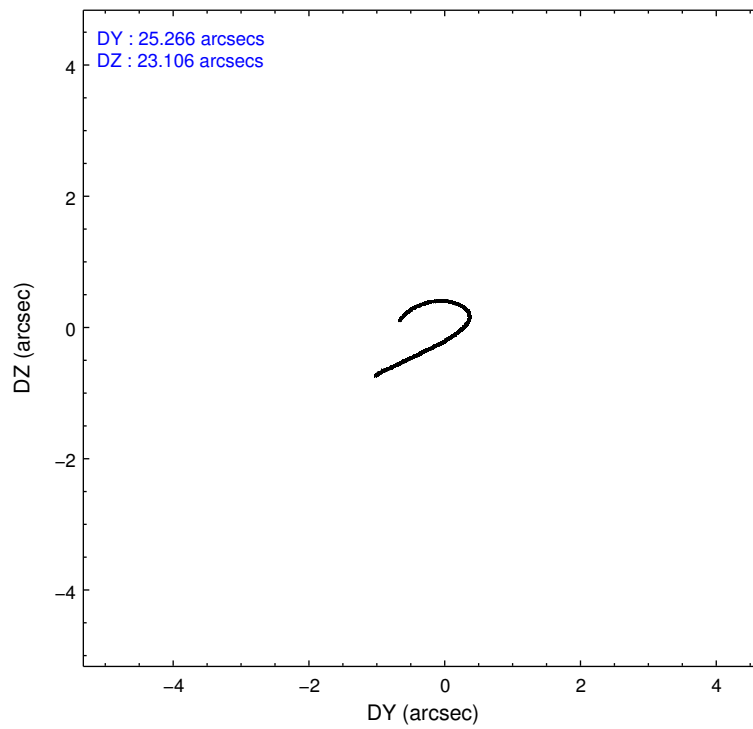
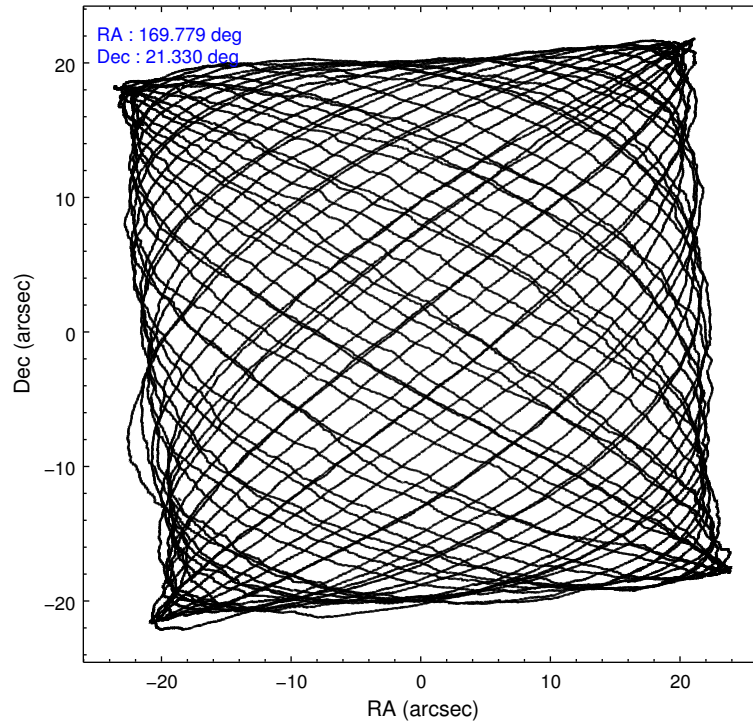
Level 1 Events

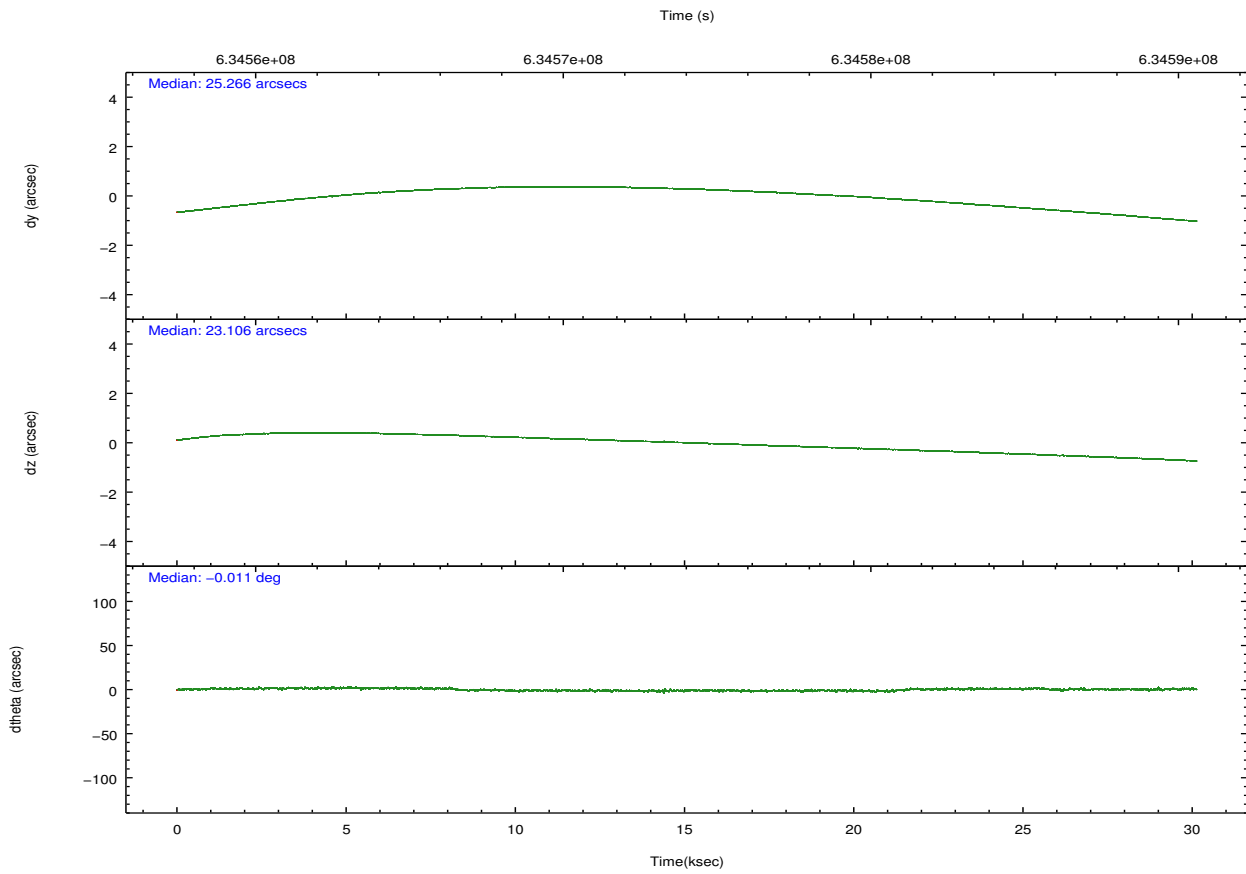
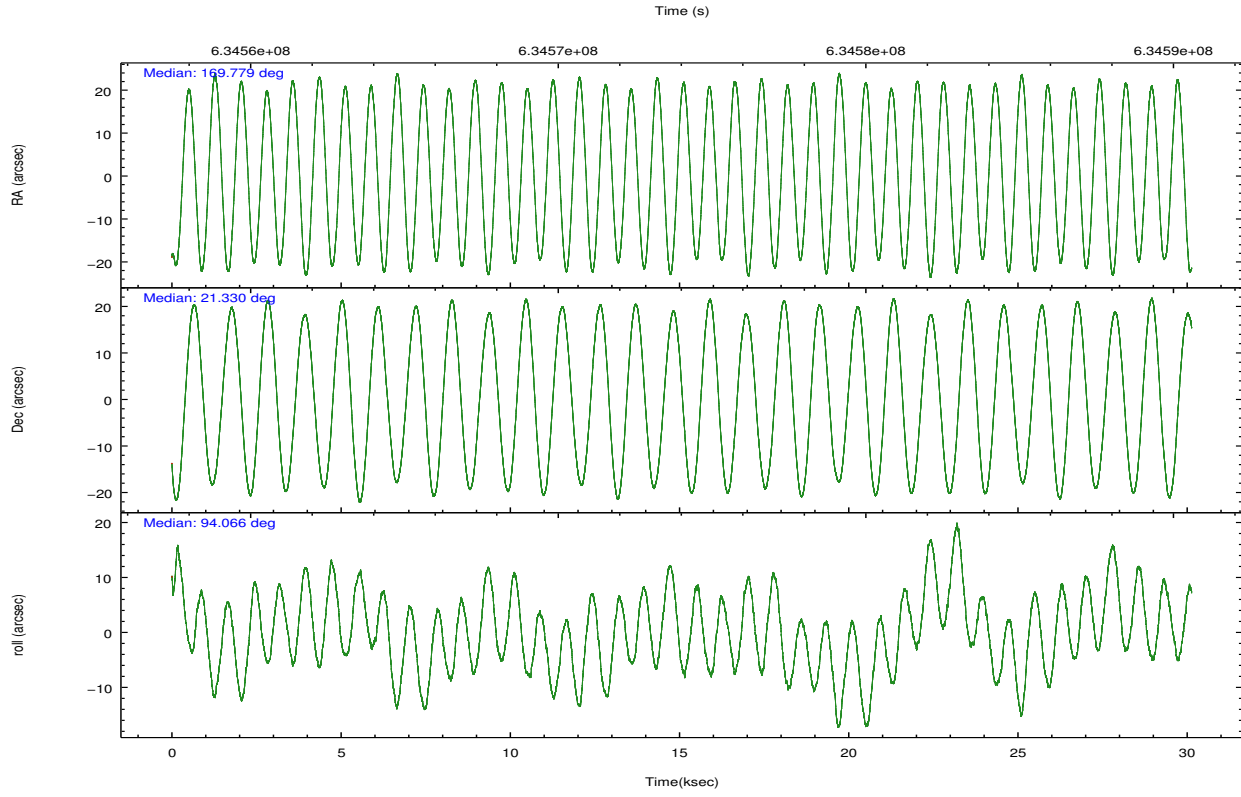
	segment 1	segment 2	segment 3
level 1 events	1101529	1105692	1097384
rejected events	35235	35081	35131
rejected %	3%	3%	3%

2.2 Compared Parameters

Parameter	Planned	Actual	Parameter	Planned	Actual
Instrument	HRC	HRC	Obspar format version number	7	7
Detector	HRC-S	HRC-S	Obspar file type	PREDICTED	ACTUAL
Grating	LETG	LETG	Obspar update status	NONE	UPDATED
Data mode	OBSERVING	OBSERVING			
Observation mode	POINTING	POINTING			
[deg] Pointing RA	169.797263	169.7786562839846			
[deg] Pointing Dec	21.306970	21.33006530864778			
[deg] Pointing Roll	93.995998	94.07010065131281			
[mm] SIM focus pos	-1.429586	-1.428180813131781			
[mm] SIM defocus	0.1037507710433287	0.1051558262725154			
[mm] SIM translation stage pos	250.455976	250.466033080201			
[mm] SIM translation stage offset	0	-0.01005468664627074			
[s] Observation start time (MET)	634559066.184000	634557986.365			
Observation start date	2018-02-09T10:23:17	2018-02-09T10:06:26			
[s] Observation end time (MET)	634589066.184000	634590132.41689			
Observation end date	2018-02-09T18:43:17	2018-02-09T19:02:12			

2.3 Aspect





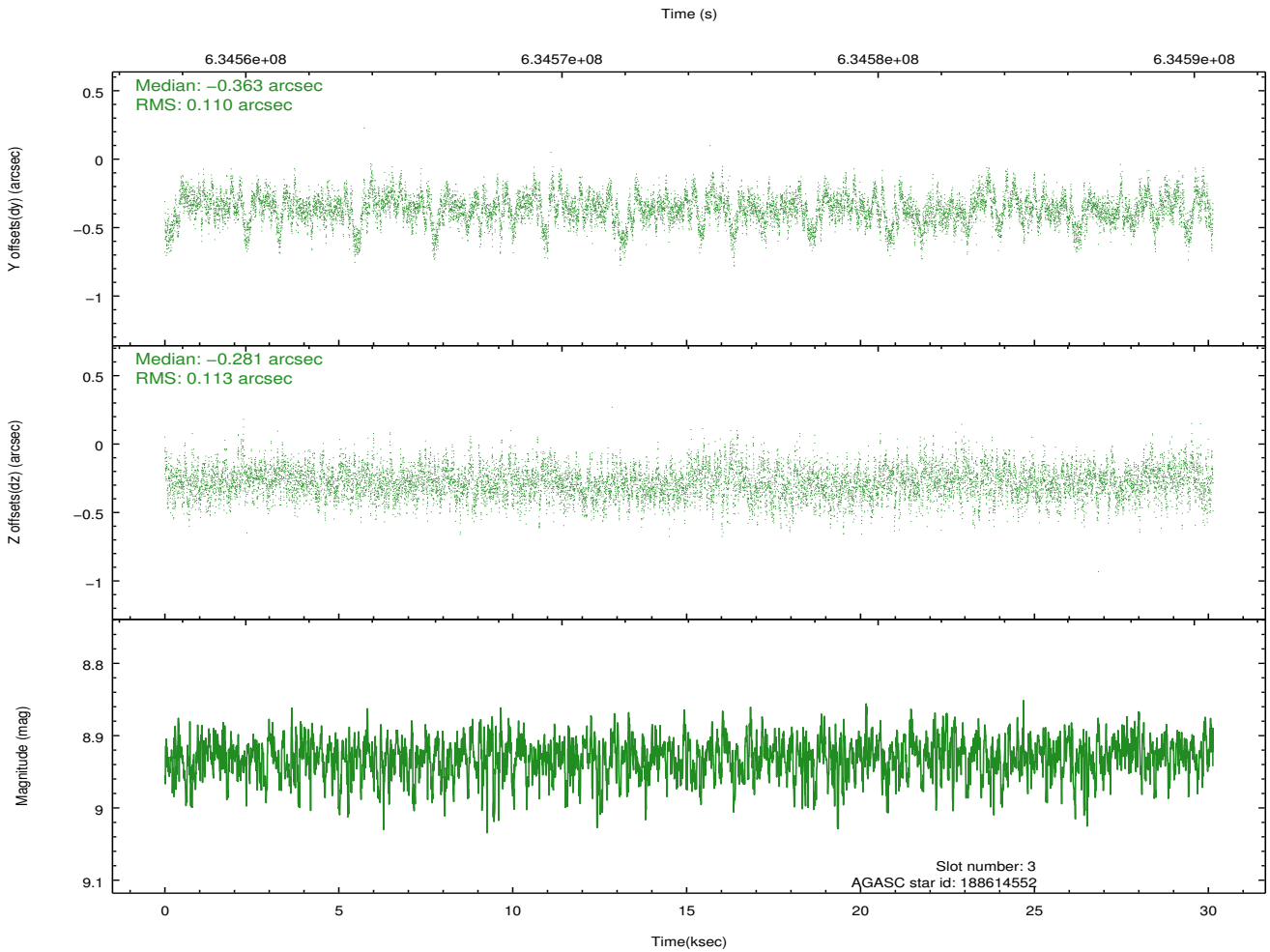
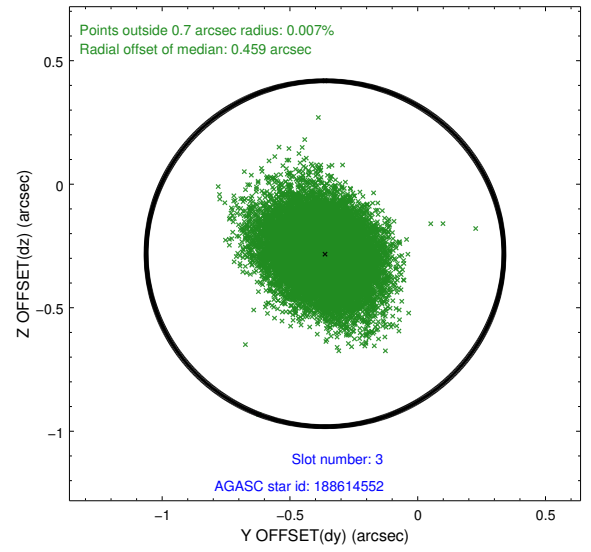
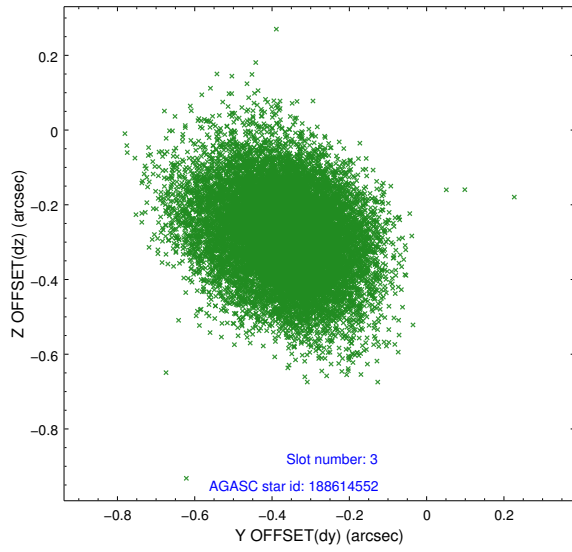
Slot Statistics

slot	status	used	id	mag	n_pts	med_dy	med_dz	dr1	dr2	ra	dec	mean_y	mean_z
0	FID		HRC-S-1	7.07	7348	-0.108	-0.162	0.015	0.024	0.000000	0.000000	-1179.95	-472.33
1	FID		HRC-S-2	7.06	7350	0.475	-0.145	0.025	0.047	0.000000	0.000000	1220.14	-464.72
2	FID		HRC-S-3	7.08	7350	0.025	0.004	0.020	0.031	0.000000	0.000000	-1182.50	557.30
3	GUIDE	used	188614552	8.93	14681	-0.363	-0.281	0.168	0.275	169.490657	21.468678	653.51	984.36
4	GUIDE	used	188616136	8.94	14603	0.096	-0.271	0.168	0.280	169.590378	21.286471	-25.25	696.59
5	GUIDE	used	188622880	7.59	14697	-0.169	0.081	0.136	0.231	170.025103	21.913955	2126.93	-911.23
6	GUIDE	used	188623472	7.06	14696	0.218	0.395	0.121	0.209	169.895324	20.725289	-2110.91	-182.84
7	GUIDE	used	188614832	9.12	14675	0.231	0.082	0.203	0.358	170.375801	21.987686	2313.78	-2096.96

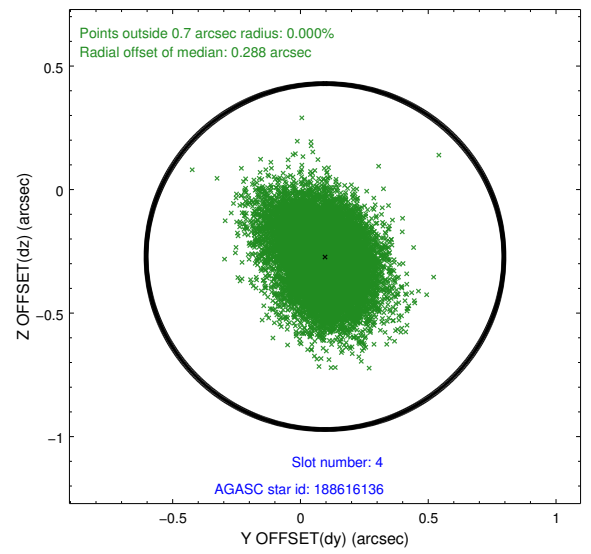
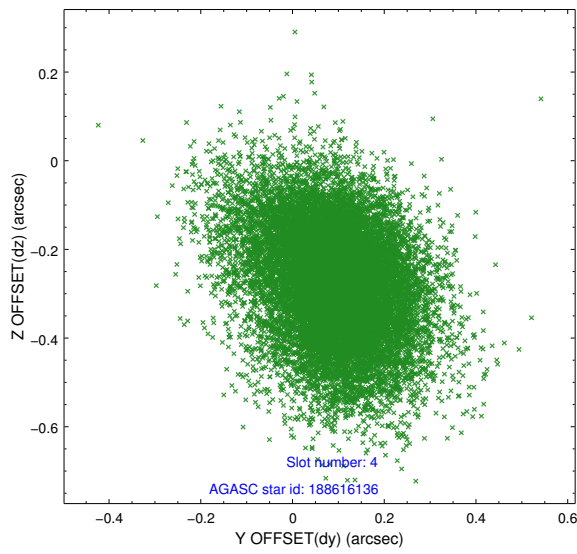
∞

2.4 Star Slots

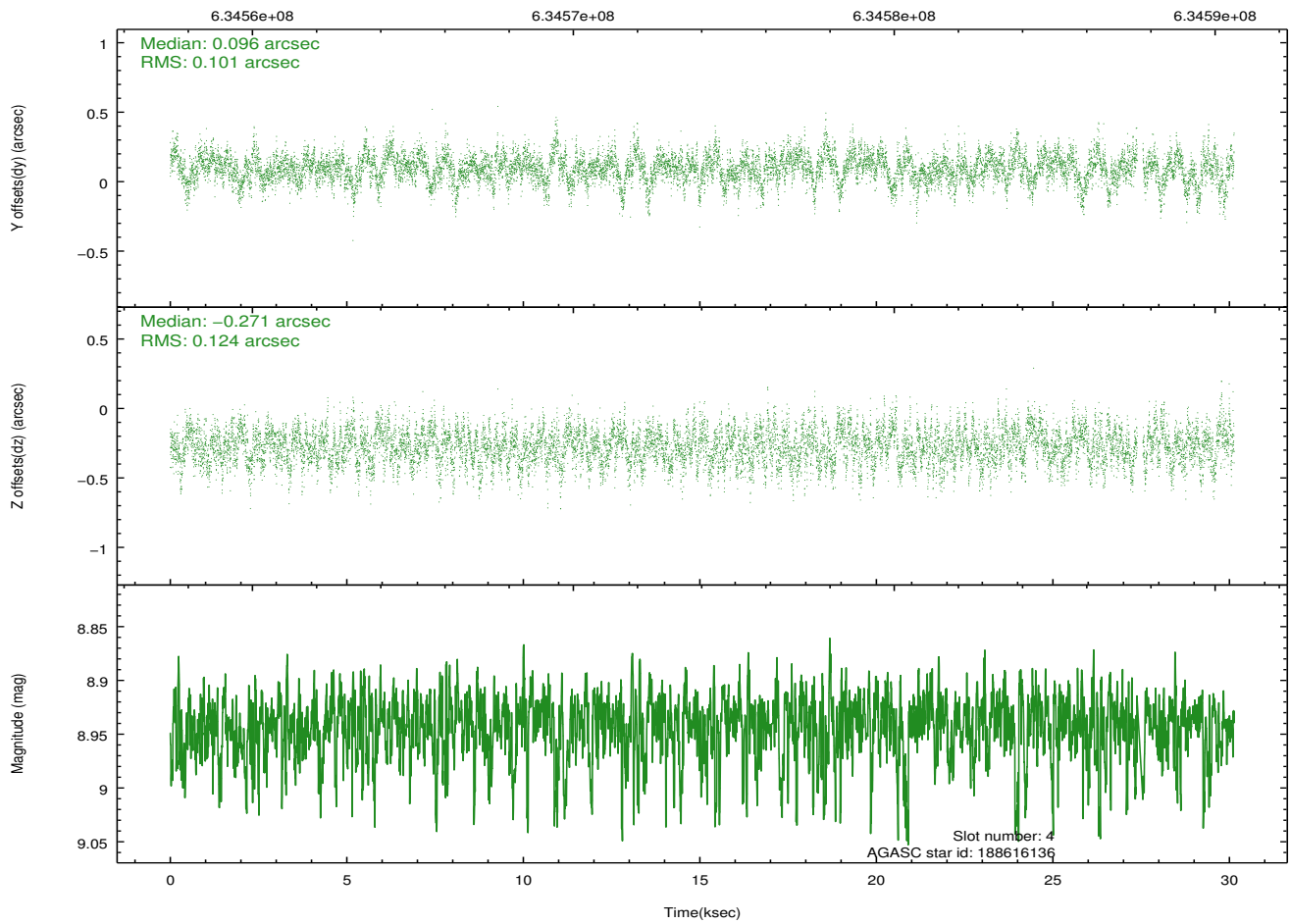
2.4.1 Slot 3



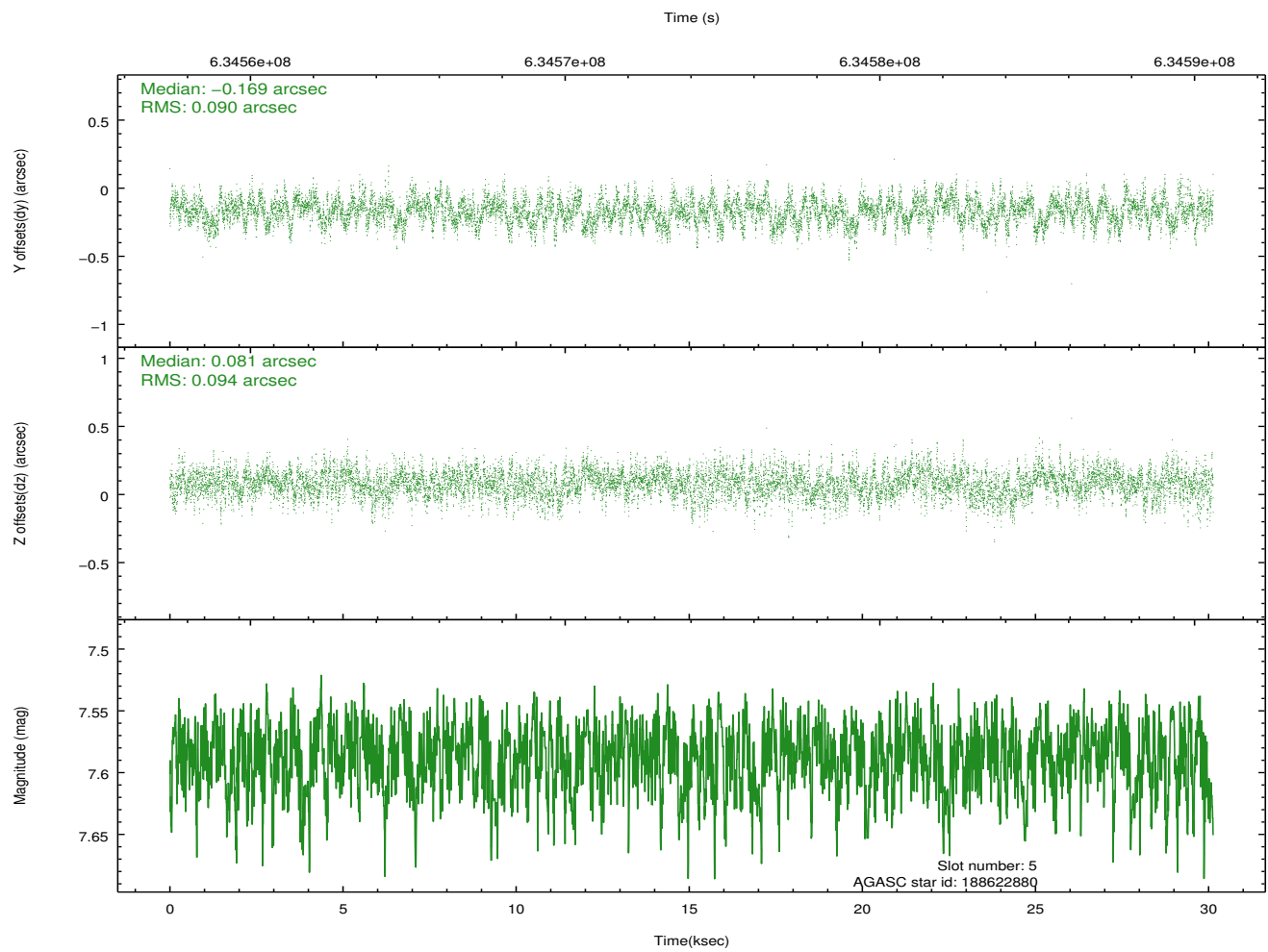
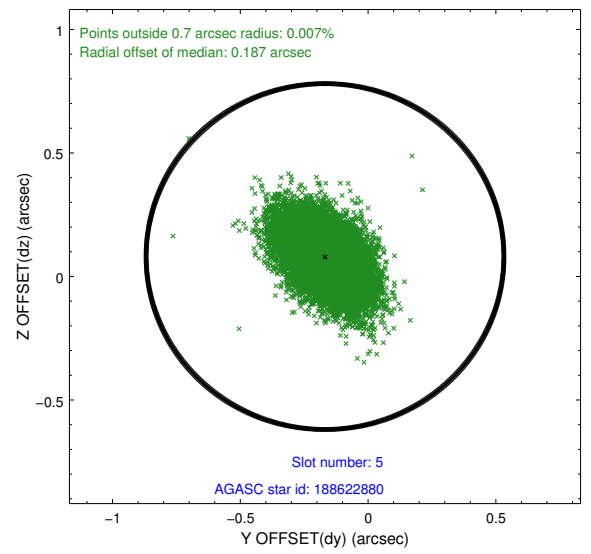
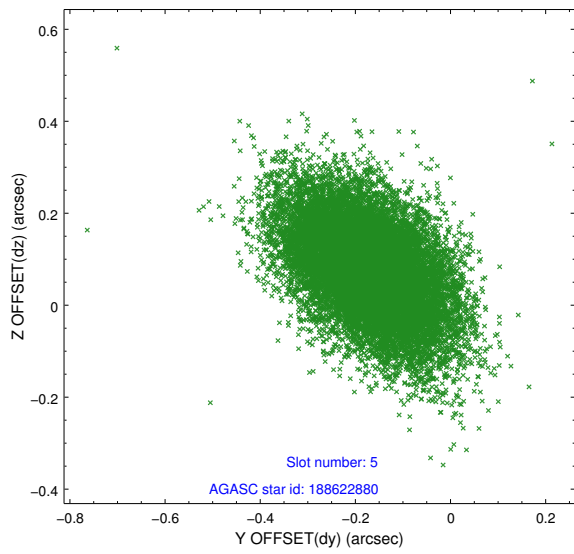
2.4.2 Slot 4



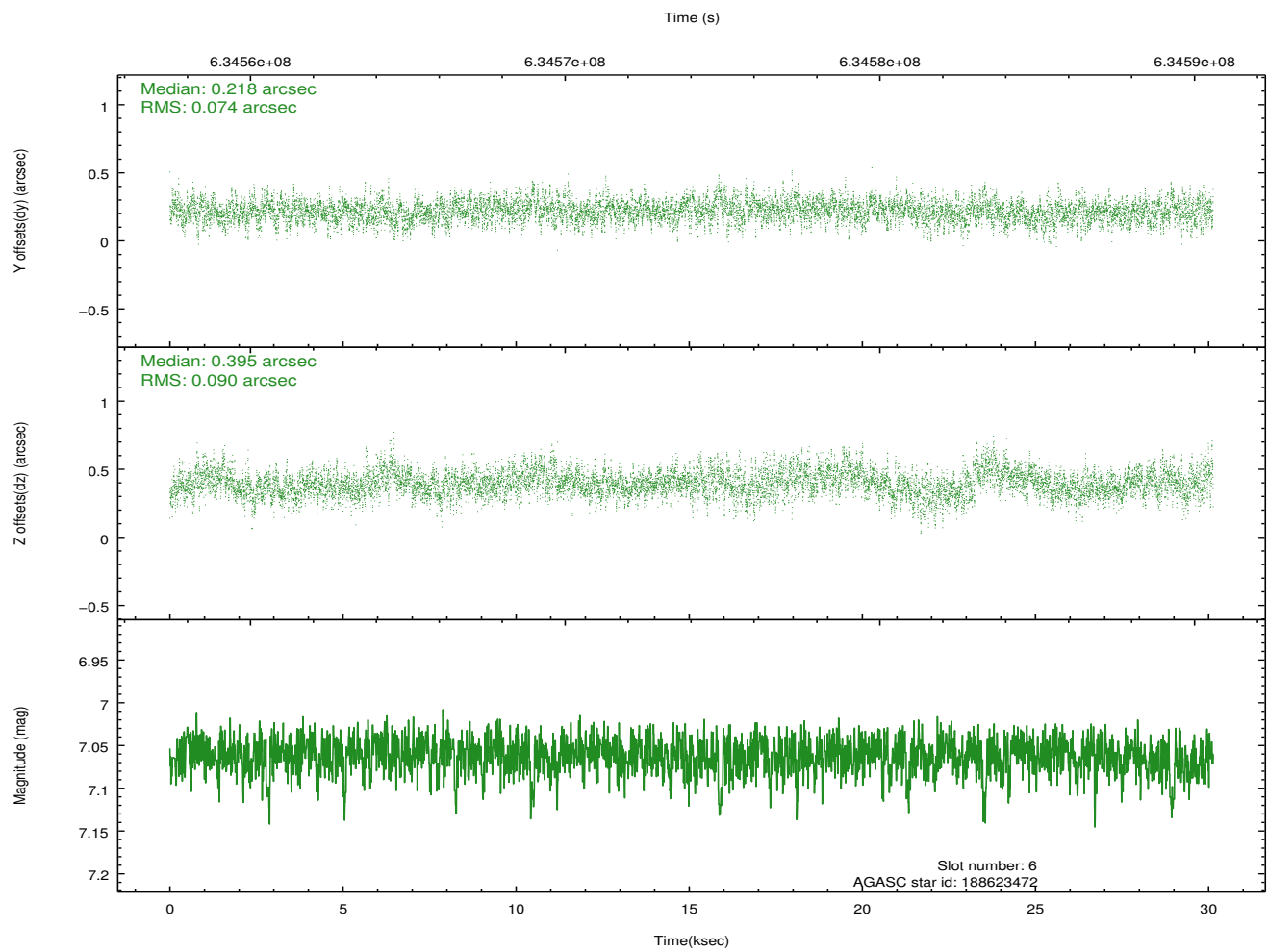
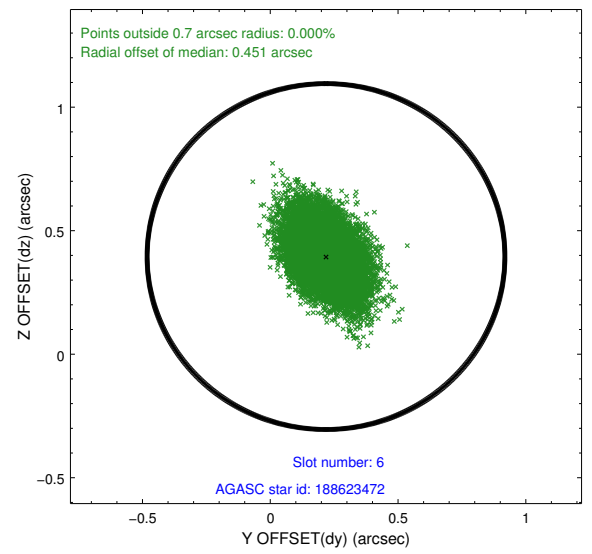
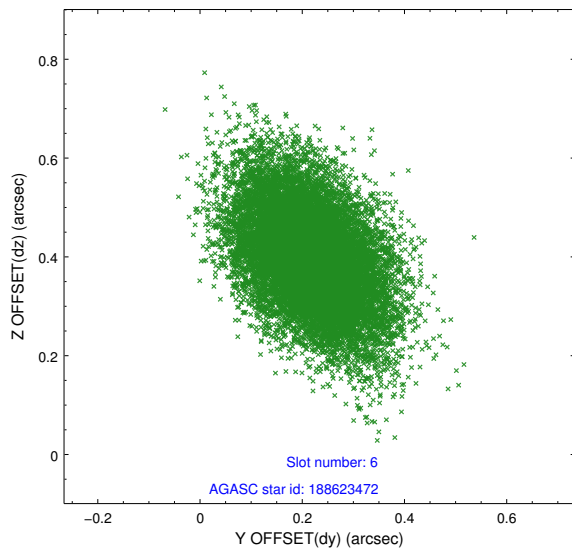
Time (s)



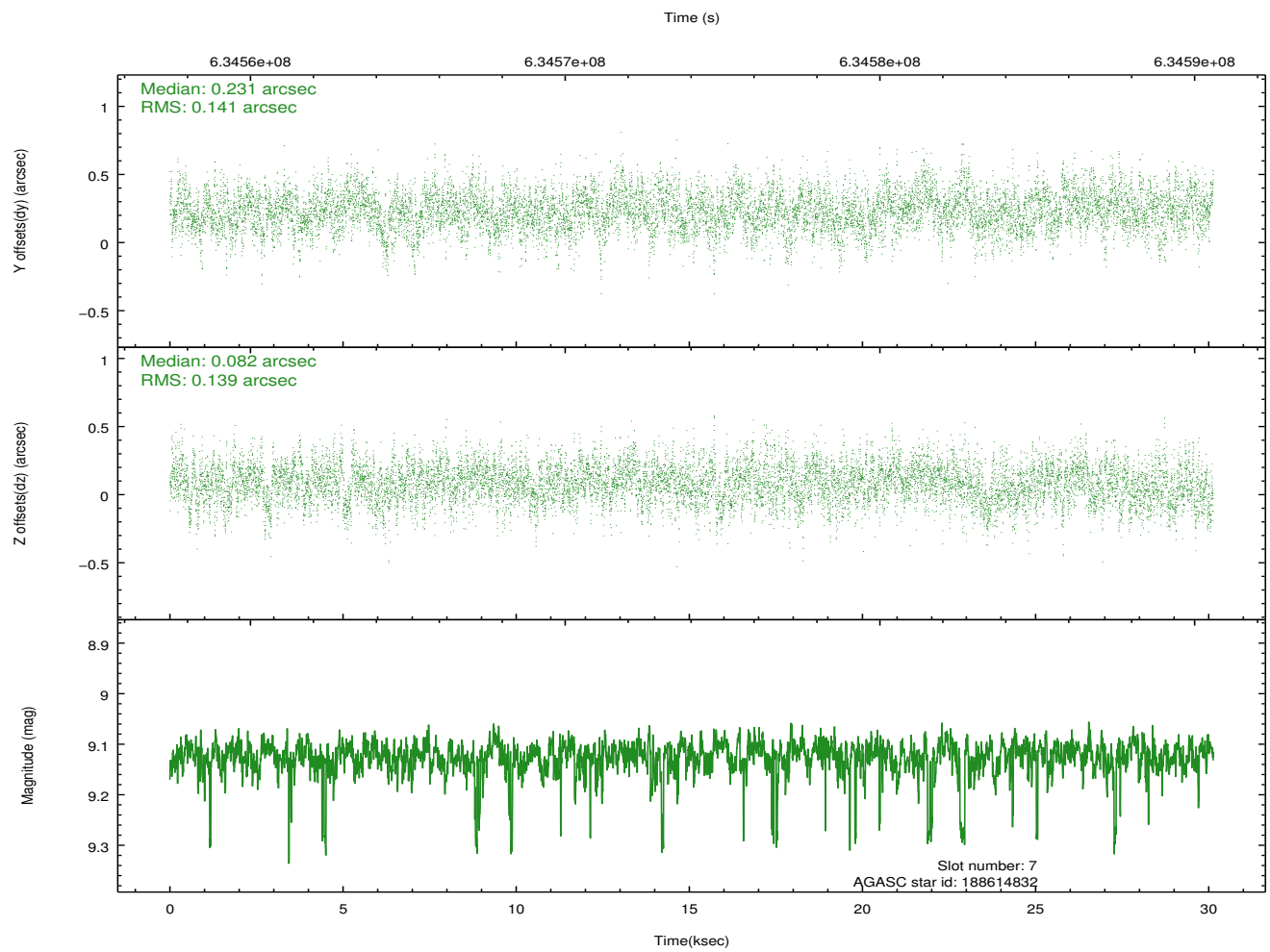
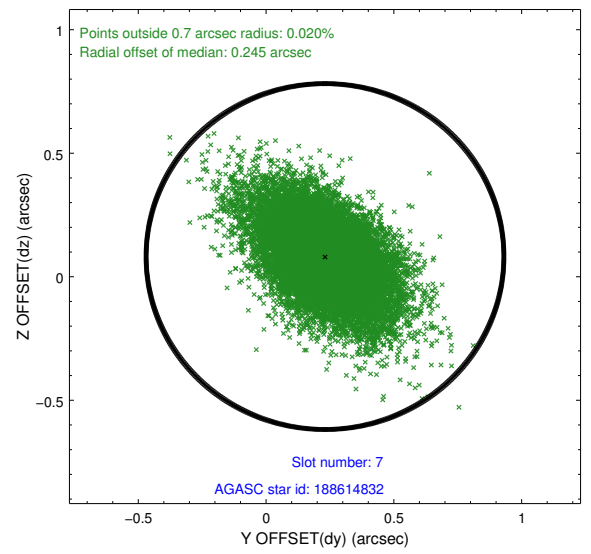
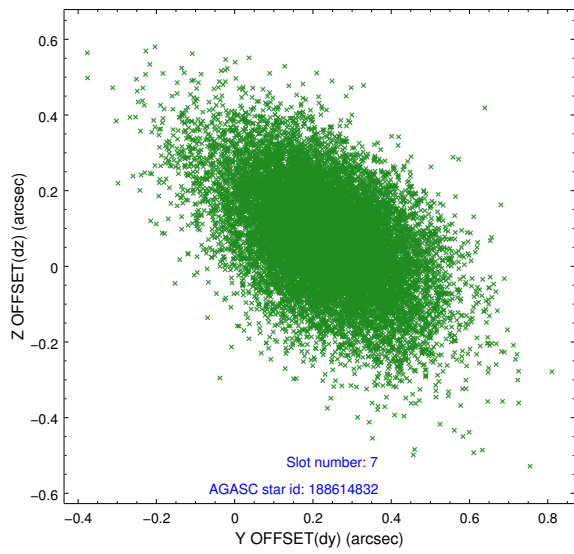
2.4.3 Slot 5



2.4.4 Slot 6

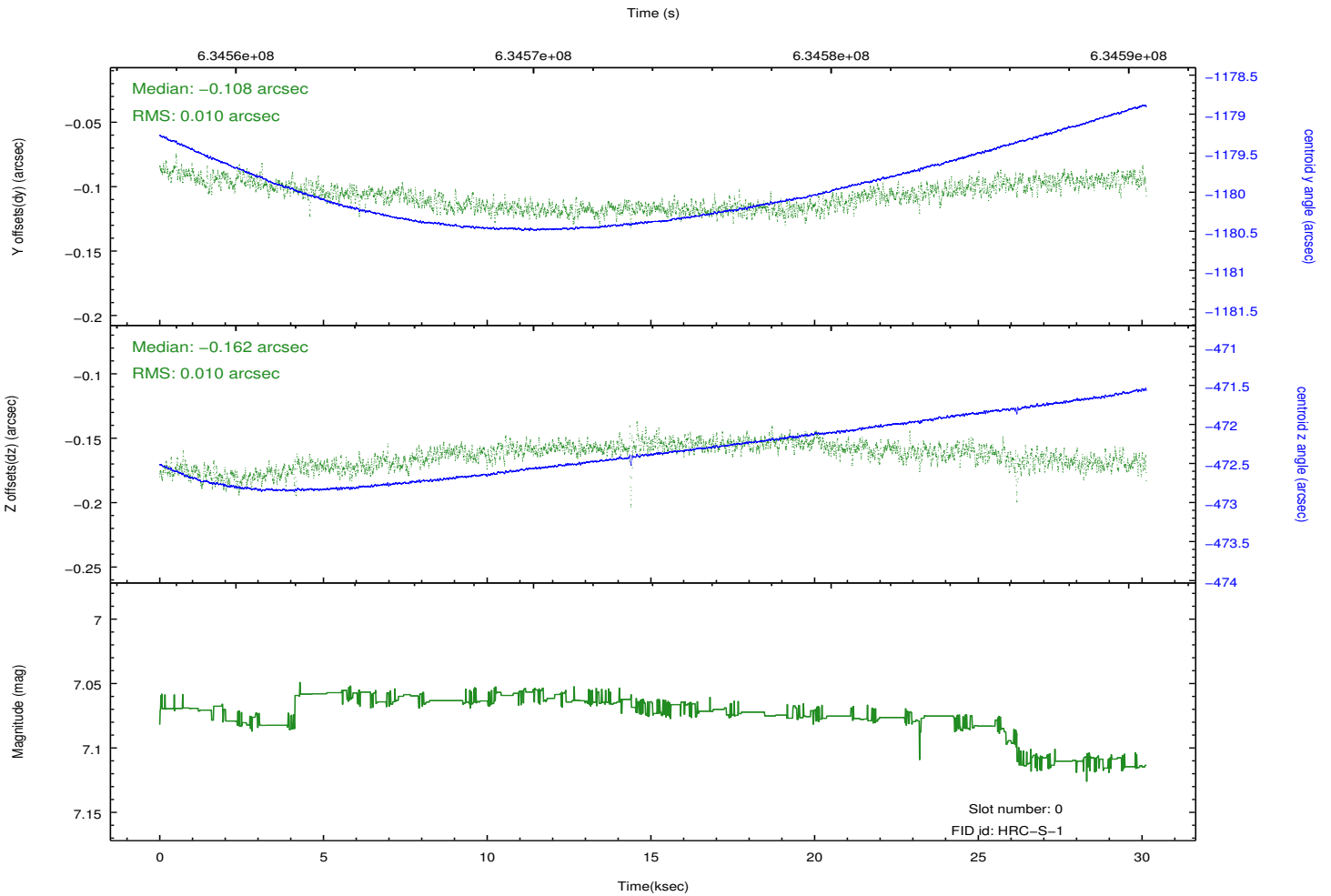
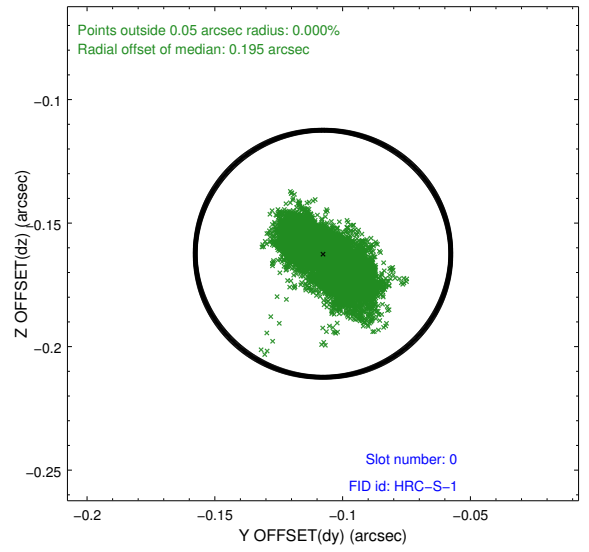
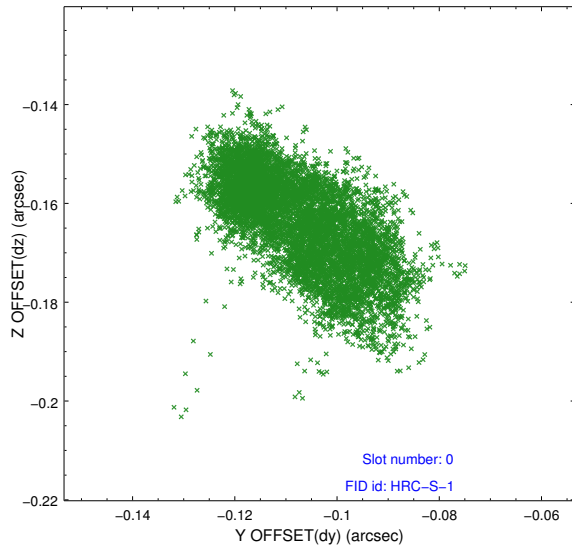


2.4.5 Slot 7

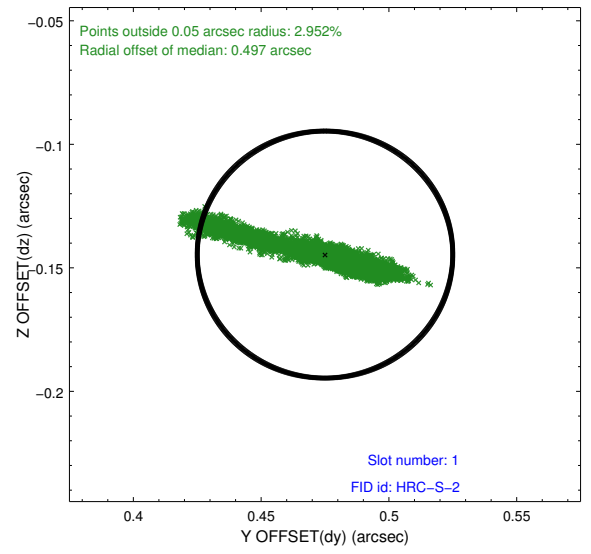
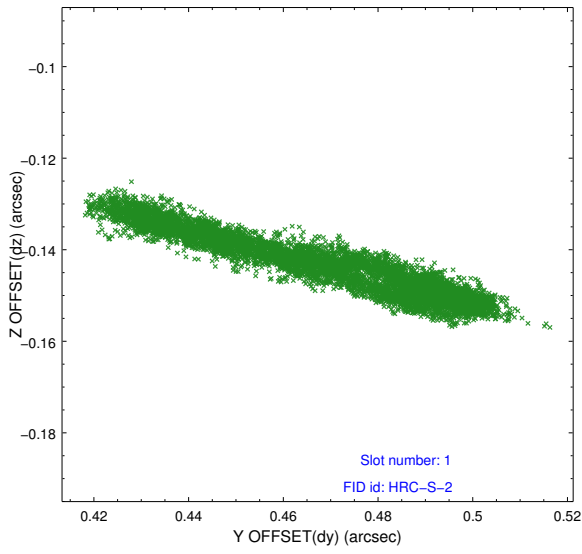


2.5 FID Slots

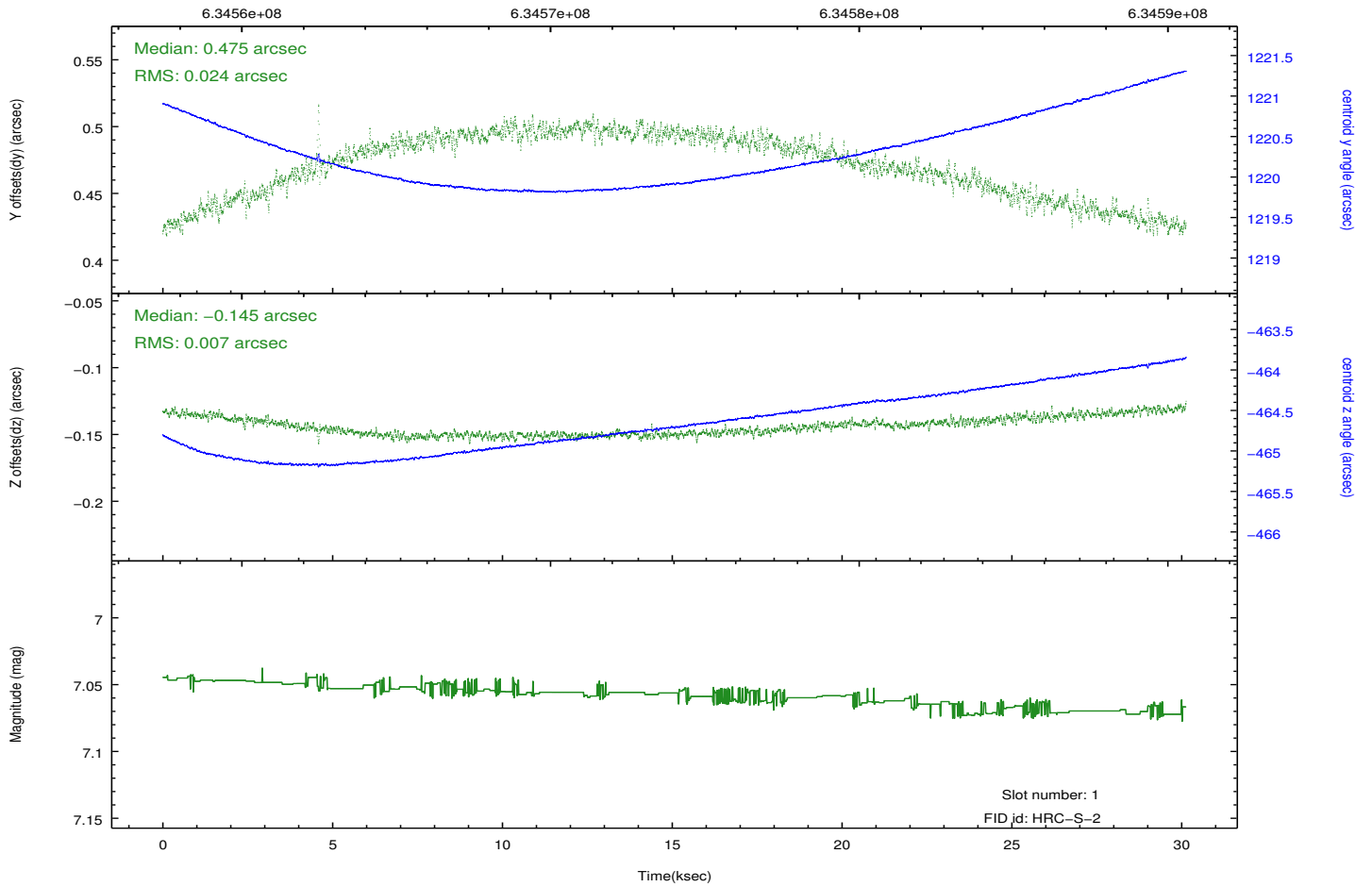
2.5.1 Slot 0



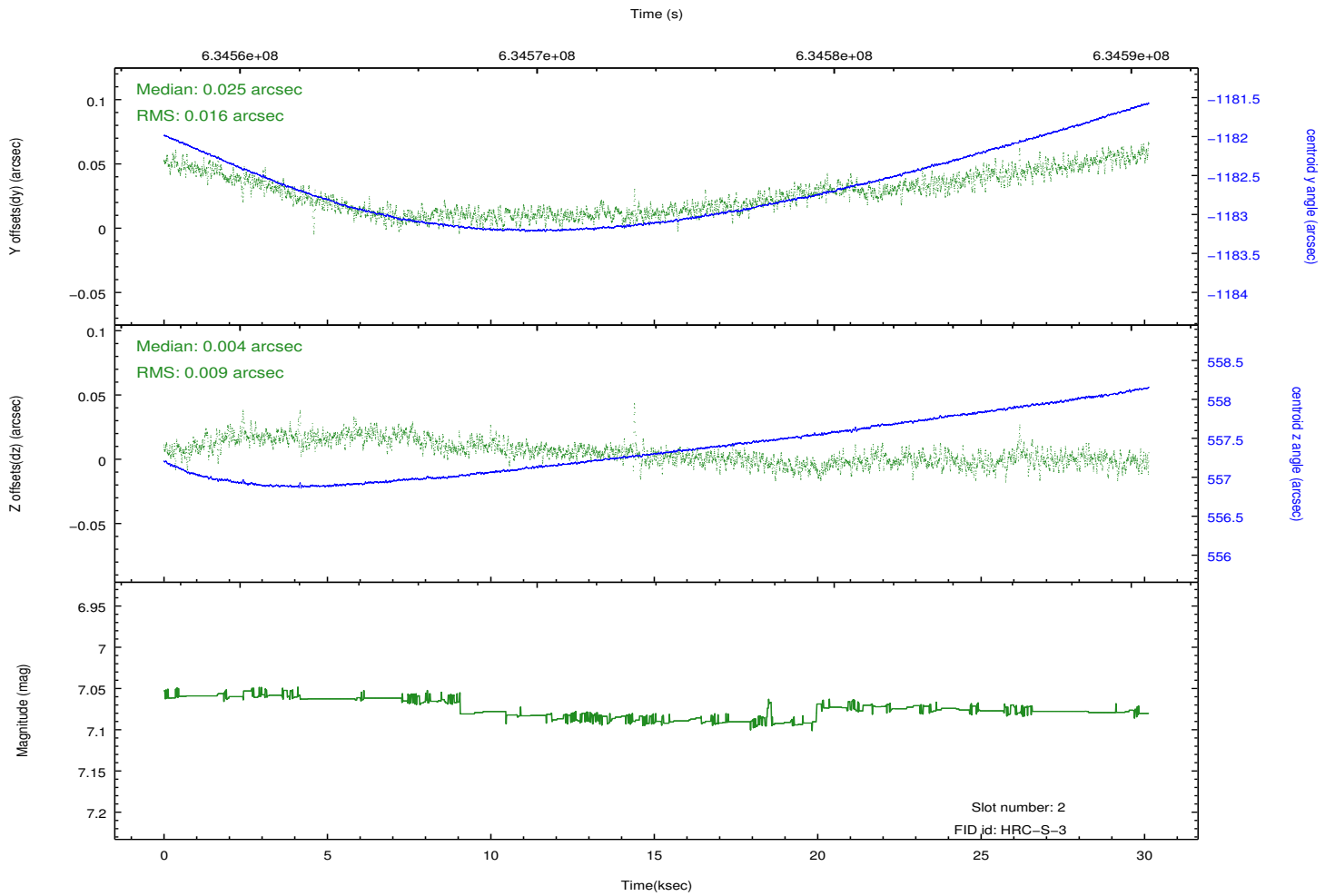
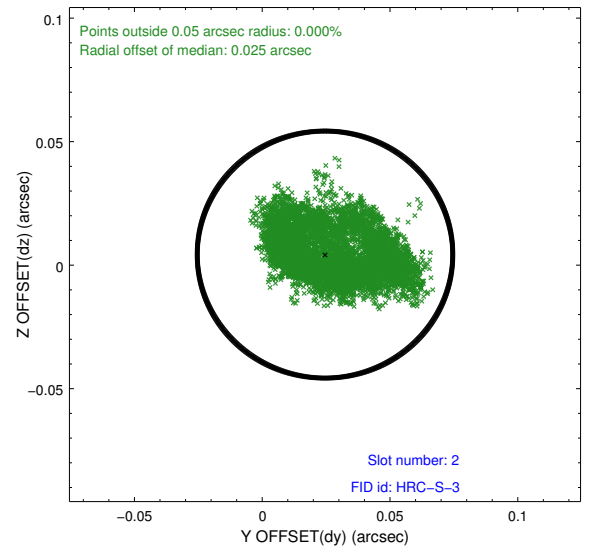
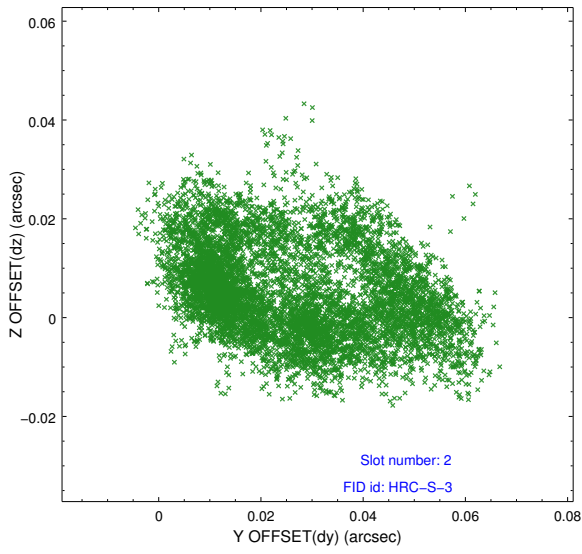
2.5.2 Slot 1



Time (s)

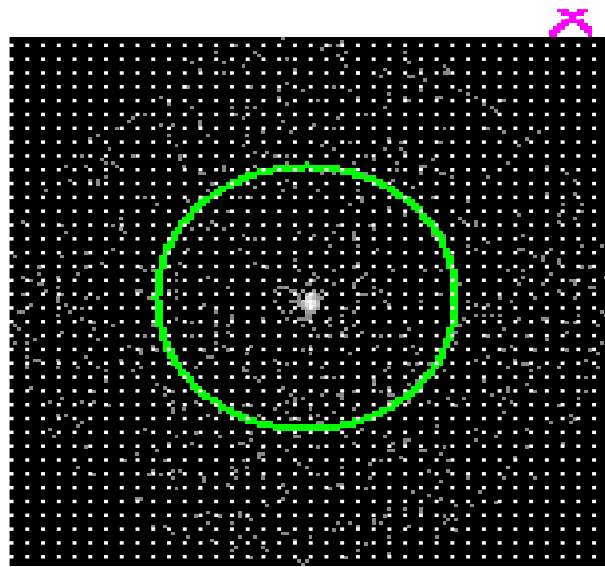


2.5.3 Slot 2

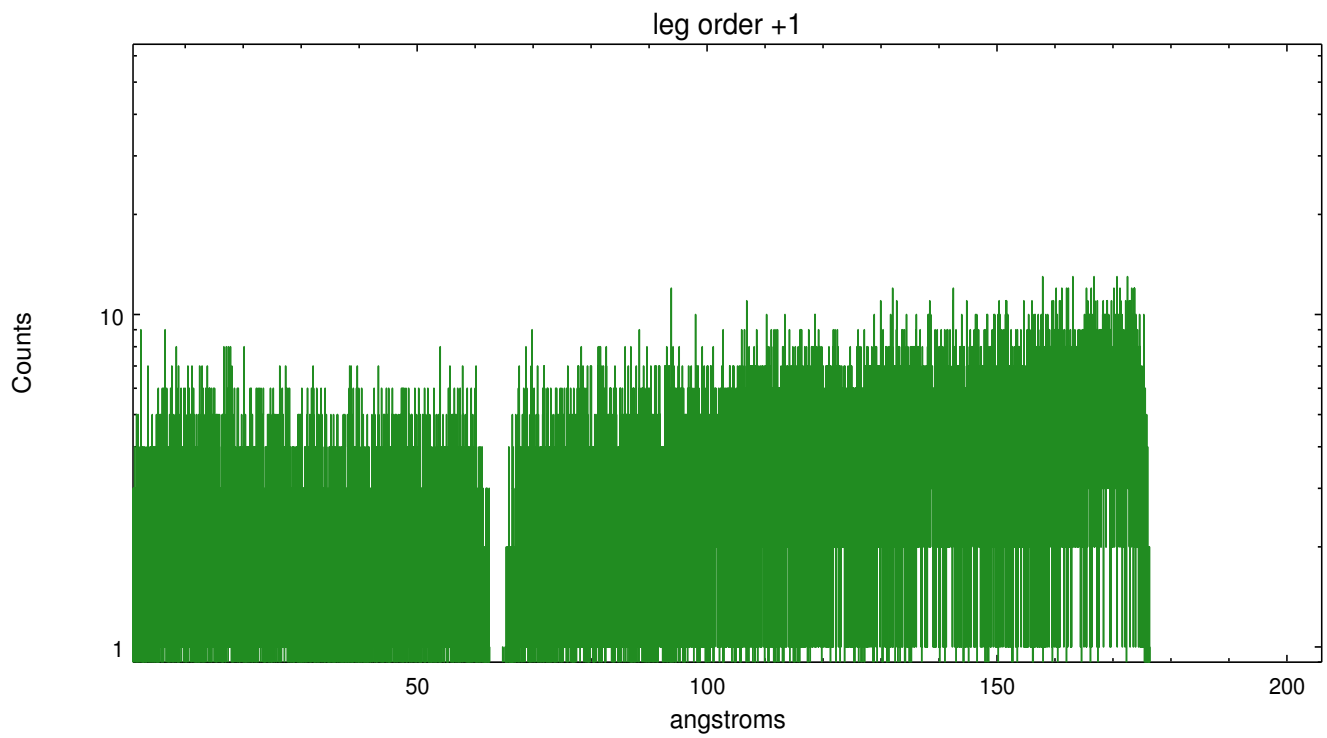
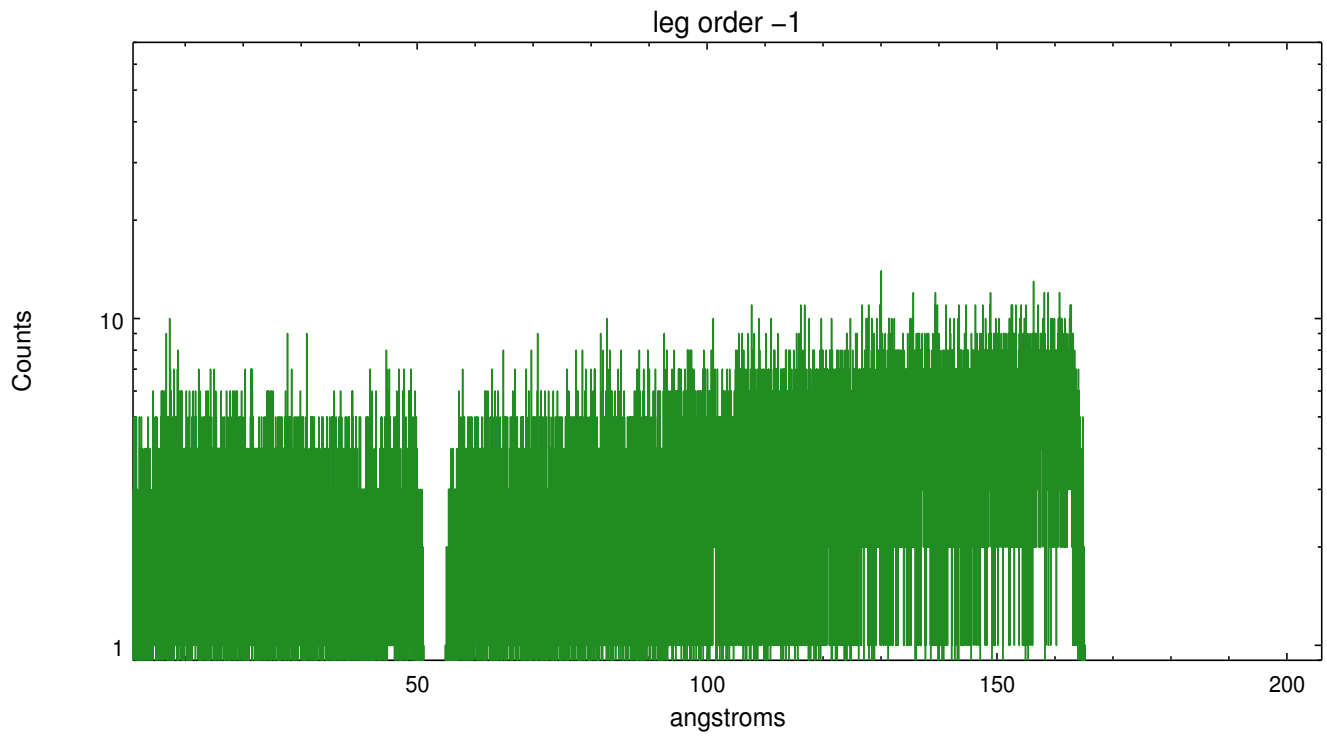


3 Gratings

3.1 LETG Arm



LETG Zero Order



A Summary

A.1 Status

V&V Scientist	Joy Nichols
V&V Date (YYYY-MM-DD)	2018.02.12
V&V Edition	1
V&V Disposition and Status	OK
V&V Charge Time	30.132183014512

A.2 Comments