

# V&V Reference Report

## L2 ASCDS Version : 10.6

Observation 19657 - L2 Version 1  
Chandra X-Ray Center

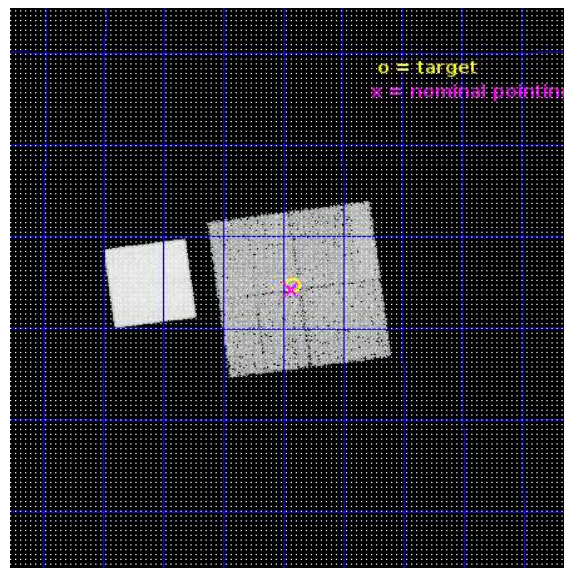
L2 Processing Date : Aug 8 2017

## Contents

<b>1</b>	<b>Front</b>	<b>2</b>
<b>2</b>	<b>OBI</b>	<b>3</b>
2.1	OBI . . . . .	3
2.1.1	Images . . . . .	3
2.1.2	Bias . . . . .	3
2.1.3	Parameters . . . . .	4
2.1.4	Events . . . . .	4
2.2	Compared Parameters . . . . .	5
2.3	Aspect . . . . .	6
2.4	Star Slots . . . . .	9
2.4.1	Slot 3 . . . . .	9
2.4.2	Slot 4 . . . . .	10
2.4.3	Slot 5 . . . . .	11
2.4.4	Slot 6 . . . . .	12
2.4.5	Slot 7 . . . . .	13
2.5	FID Slots . . . . .	14
2.5.1	Slot 0 . . . . .	14
2.5.2	Slot 1 . . . . .	15
2.5.3	Slot 2 . . . . .	16
<b>A</b>	<b>Summary</b>	<b>17</b>
A.1	Status . . . . .	17
A.2	Comments . . . . .	17

# 1 Front

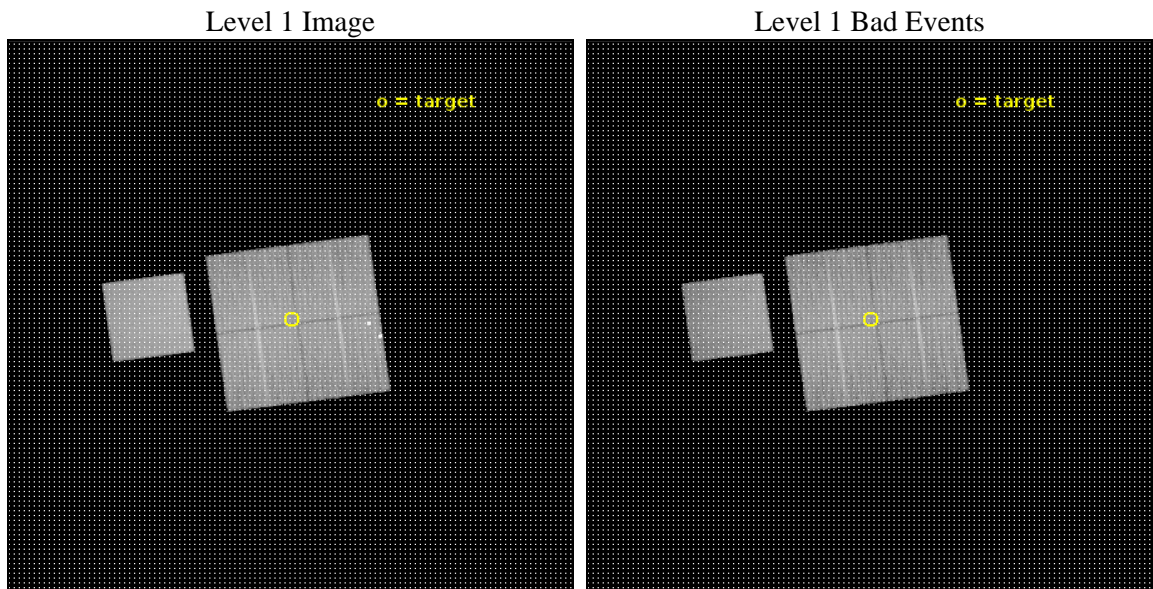
seq_num	901364	Sequence number
obs_id	19657	Observation id
title	The Chandra Deep Wide-Field Survey: Completing the new generation of Chandra extragalactic surveys	Proposal title
observer	Ryan Hickox	Principal investigator
object	CDWFS	Source name
dtcycle	0	&#160
cycle	P	events from which exps? Prim/Second/Both
ra_targ	216.60399	Observer's specified target RA [deg]
dec_targ	33.412316	Observer's specified target Dec [deg]
ra_nom	216.6076113769	Nominal RA [deg]
dec_nom	33.40368814436	Nominal Dec [deg]
roll_nom	262.33415533499	Nominal Roll [deg]
revision	1	Processing version of data
ontime	25051.01816237	Sum of GTIs [s]
livetime	24723.708167787	Livetime [s]
ontime0	25057.300192833	Sum of GTIs [s]
ontime1	25057.300192833	Sum of GTIs [s]
ontime2	25054.159202695	Sum of GTIs [s]
ontime3	25051.01816237	Sum of GTIs [s]
ontime7	25057.300192833	Sum of GTIs [s]
l2events	157669	Number of level 2 events



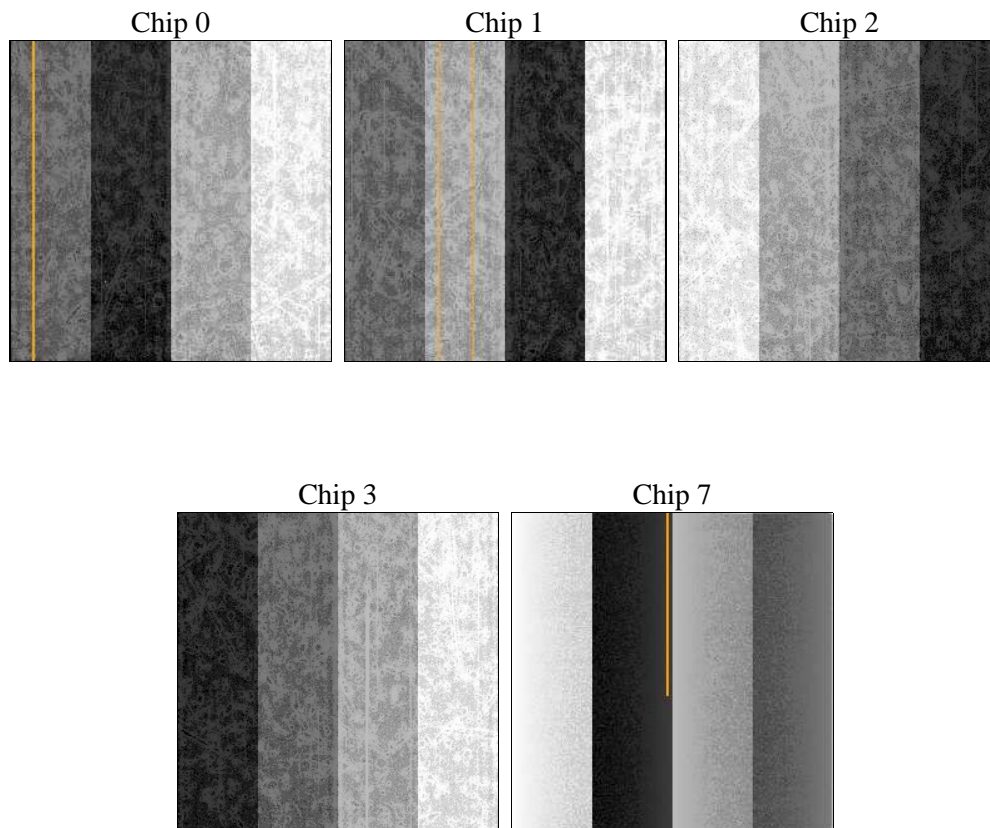
## 2 OBI

### 2.1 OBI

#### 2.1.1 Images



#### 2.1.2 Bias



### 2.1.3 Parameters

obi_num	0	Obi number	sched_exp_time	25000.000000	[s] Scheduled observation exposure time
ascdsver	10.6	Processing system revision	ontime	25051.01816237	Sum of GTIs [s]
caldbver	4.7.5	&#160	ontime0	25057.300192833	Sum of GTIs [s]
date	2017-08-08T13:51:54	Date and time of file creation	ontime1	25057.300192833	Sum of GTIs [s]
revision	1	Processing version of data	ontime2	25054.159202695	Sum of GTIs [s]
			ontime3	25051.01816237	Sum of GTIs [s]
			ontime7	25057.300192833	Sum of GTIs [s]
			l1events	871612	Number of level 1 events

### 2.1.4 Events

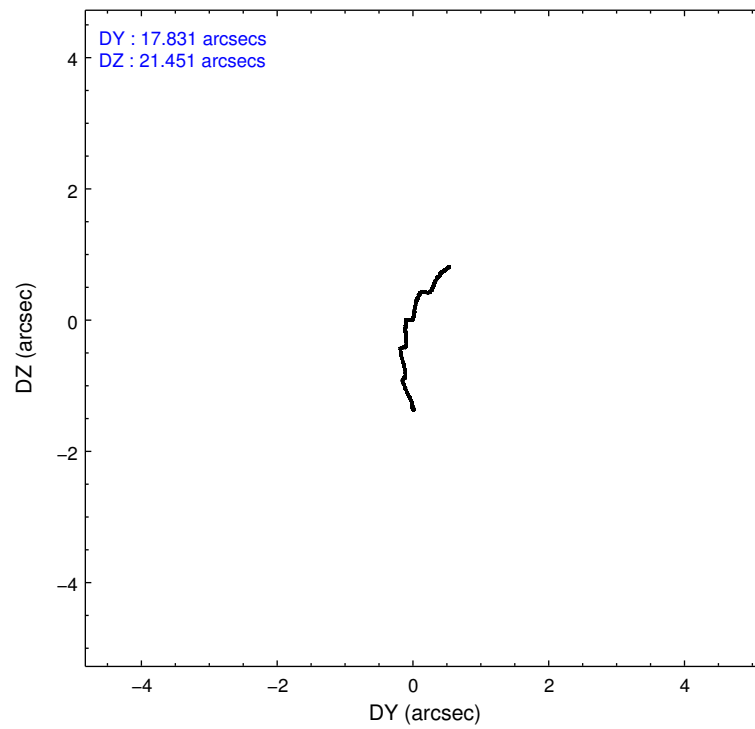
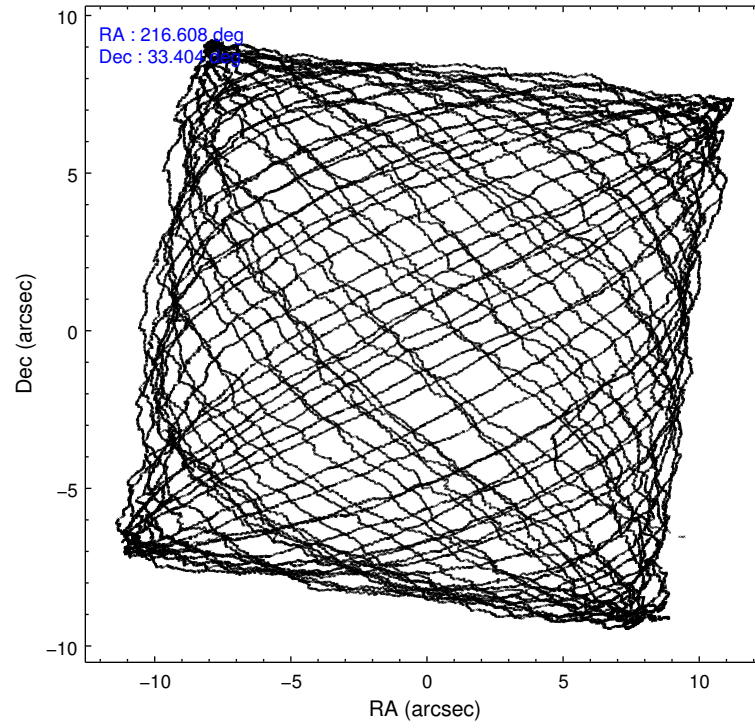
	ccd 0	ccd 1	ccd 2	ccd 3	ccd 7
level 1 events	167870	156251	166610	162187	218694
rejected events	133371	135149	147906	143591	123223
rejected %	79%	86%	88%	88%	56%

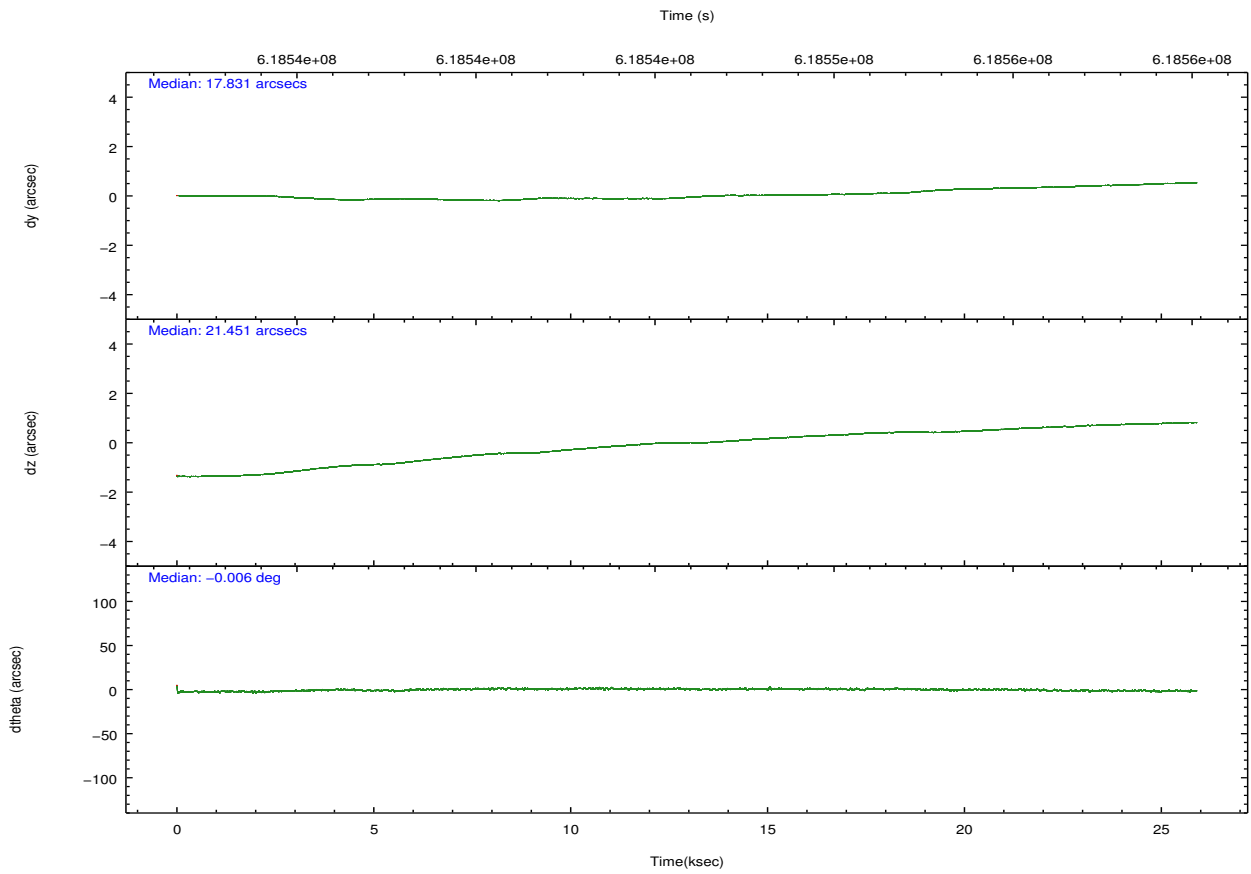
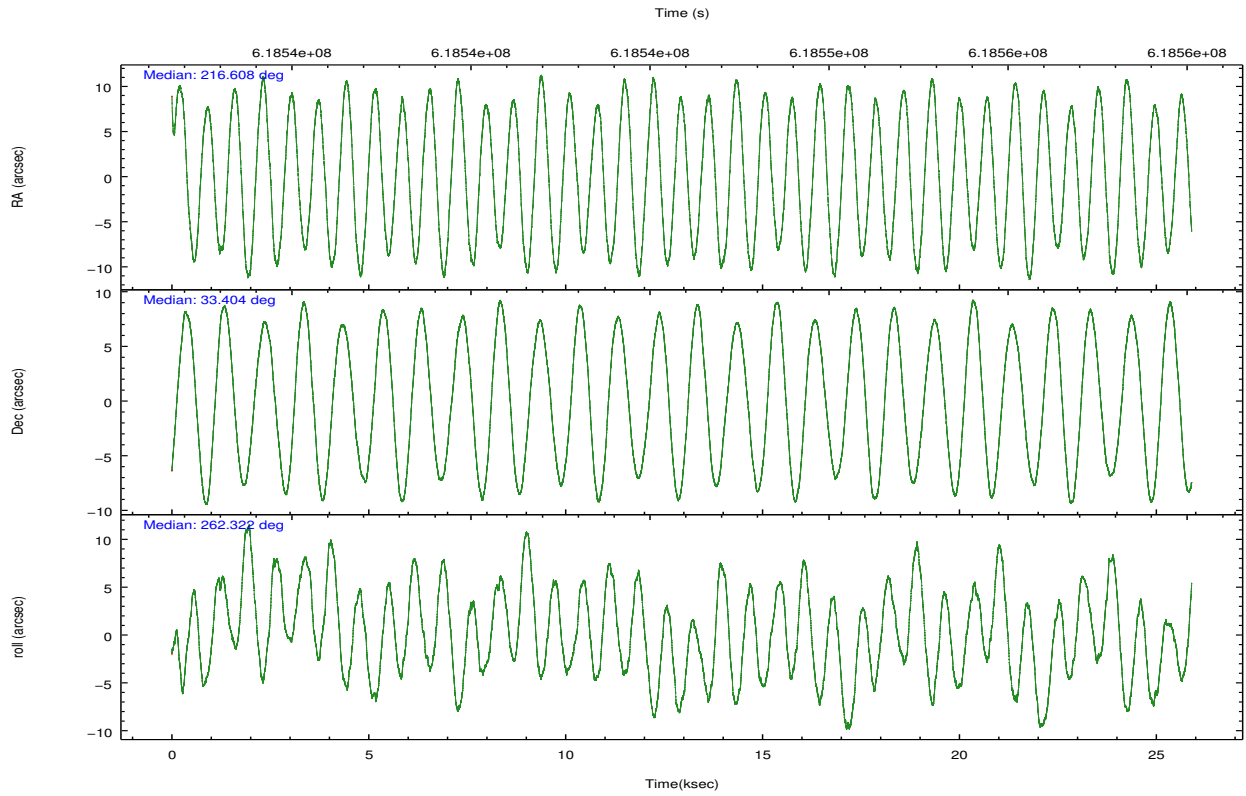
	ccd 0	ccd 1	ccd 2	ccd 3	ccd 7
grade 0 events	21609	6999	6654	6739	8059
	12%	4%	3%	4%	3%
grade 1 events	149	92	94	101	299
	0%	0%	0%	0%	0%
grade 2 events	4919	5385	4714	4066	20328
	2%	3%	2%	2%	9%
grade 3 events	2031	2035	1825	1971	7784
	1%	1%	1%	1%	3%
grade 4 events	1876	2097	1854	1981	7628
	1%	1%	1%	1%	3%
grade 5 events	7457	7731	6881	8264	21748
	4%	4%	4%	5%	9%
grade 6 events	4075	4592	3659	3840	51683
	2%	2%	2%	2%	23%
grade 7 events	125754	127320	140929	135225	101165
	74%	81%	84%	83%	46%

## 2.2 Compared Parameters

Parameter	Planned	Actual	Parameter	Planned	Actual
Instrument	ACIS	ACIS	Obspar format version number	7	7
Detector	ACIS-01237	ACIS-01237	Obspar file type	PREDICTED	ACTUAL
Grating	NONE	NONE	Obspar update status	NONE	UPDATED
Data mode	VFAINT	VFAINT	CCD I0 on	Y	Y
Observation mode	POINTING	POINTING	CCD I1 on	Y	Y
[deg] Pointing RA	216.594915	216.6076113768995	CCD I2 on	Y	Y
[deg] Pointing Dec	33.429175	33.40368814436037	CCD I3 on	Y	Y
[deg] Pointing Roll	262.132464	262.3341553349925	CCD S0 on	N	N
[mm] SIM focus pos	-0.782348	-0.7809083437167272	CCD S1 on	N	N
[mm] SIM defocus	0	0.001439871863259334	CCD S2 on	N	N
[mm] SIM translation stage pos	-233.592463	-233.5874344608287	CCD S3 on	O1	Y
[mm] SIM translation stage offset	0	-0.005018542100998502	CCD S4 on	N	N
[s] Observation start time (MET)	618533848.184000	618531962.82499	CCD S5 on	N	N
Observation start date	2017-08-07T22:56:19	2017-08-07T22:26:02	Number of optional ACIS chips dropped	0	0
[s] Observation end time (MET)	618558848.184000	618559248.32658	On-chip summing requested	N	N
Observation end date	2017-08-08T05:52:59	2017-08-08T06:00:48	Subarray requested	NONE	NONE
Read mode	TIMED	TIMED	Alternating exposures requested	N	N
			[s] Primary exposure time	0.000000	3.1

## 2.3 Aspect





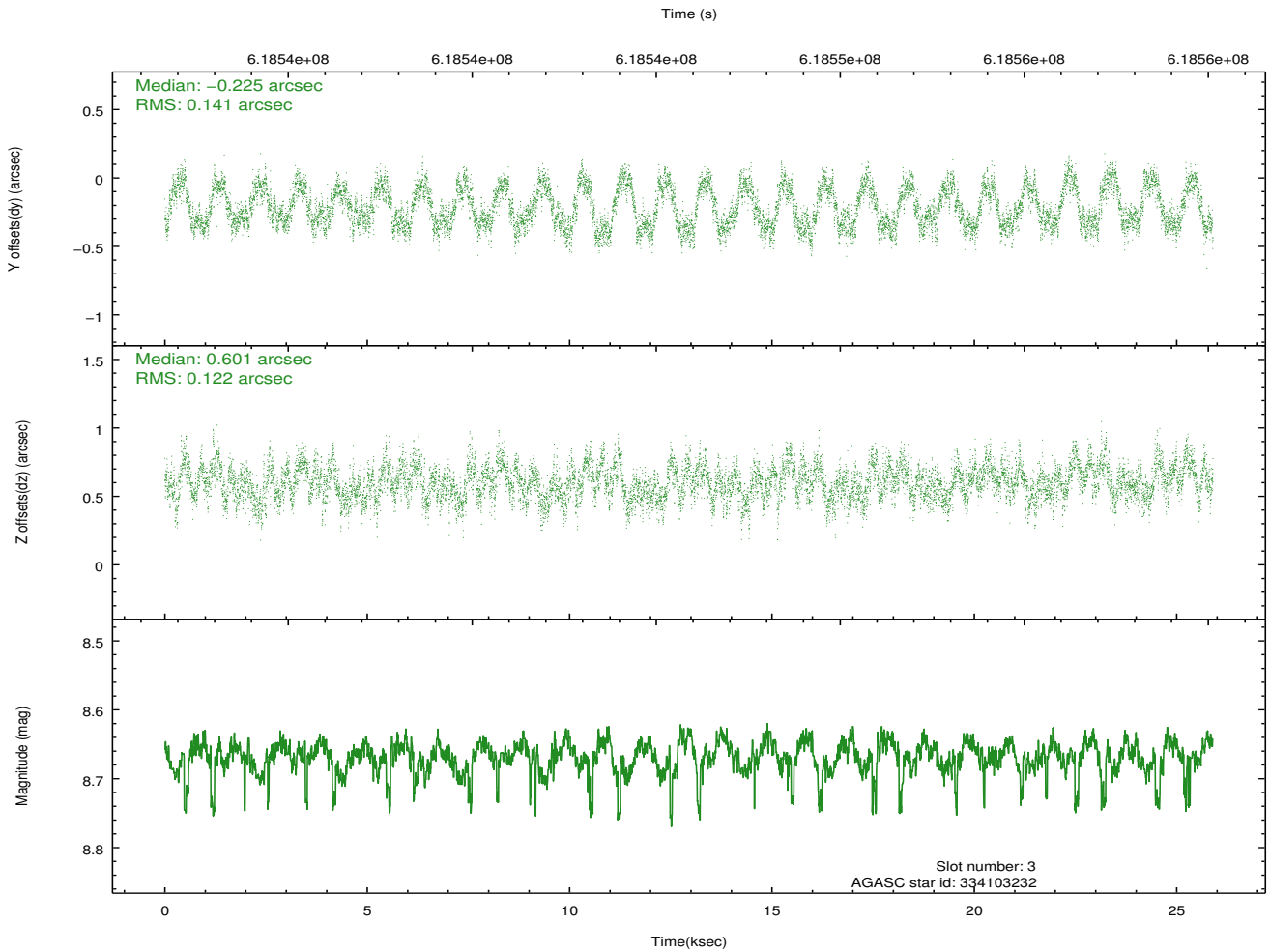
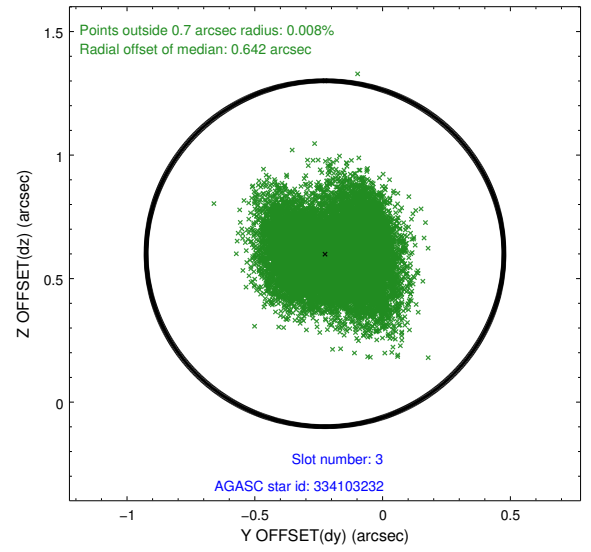
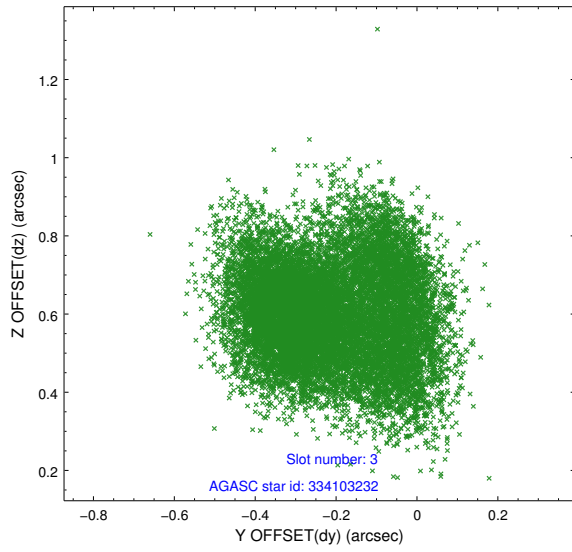
### Slot Statistics

slot	status	used	id	mag	n_pts	med_dy	med_dz	dr1	dr2	ra	dec	mean_y	mean_z
0	FID		ACIS-I-1	7.10	6317	-0.076	-0.120	0.019	0.051	0.000000	0.000000	921.47	-845.14
1	FID		ACIS-I-4	7.04	6316	0.473	0.144	0.013	0.038	0.000000	0.000000	2141.99	1054.94
2	FID		ACIS-I-5	7.08	6317	-0.495	0.047	0.013	0.024	0.000000	0.000000	-1826.94	1052.55
3	GUIDE	used	334103232	8.67	12623	-0.225	0.601	0.204	0.306	215.850271	33.571936	-210.43	-2283.61
4	GUIDE	used	334106080	9.09	12621	-0.109	0.096	0.168	0.277	215.767785	32.987168	1909.70	-2257.76
5	GUIDE	used	335022112	9.14	12619	0.061	-0.165	0.213	0.342	216.659296	32.794758	2237.20	505.88
6	GUIDE	used	335028696	9.12	12629	0.224	-0.700	0.162	0.277	217.260519	33.844112	-1757.90	1764.88
7	GUIDE	used	335030152	9.62	12614	0.046	0.161	0.248	0.403	216.202154	33.091054	1366.45	-1006.76

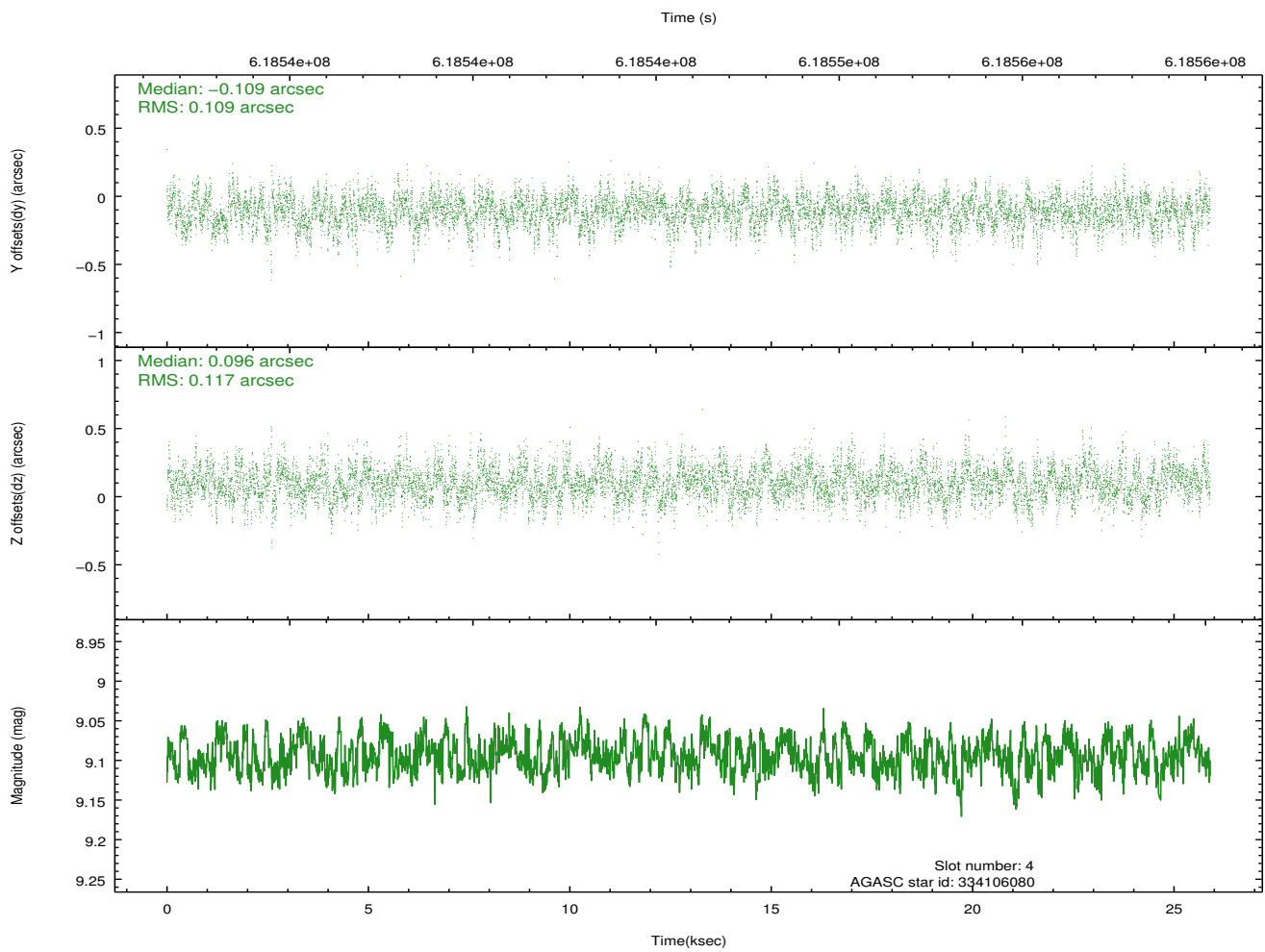
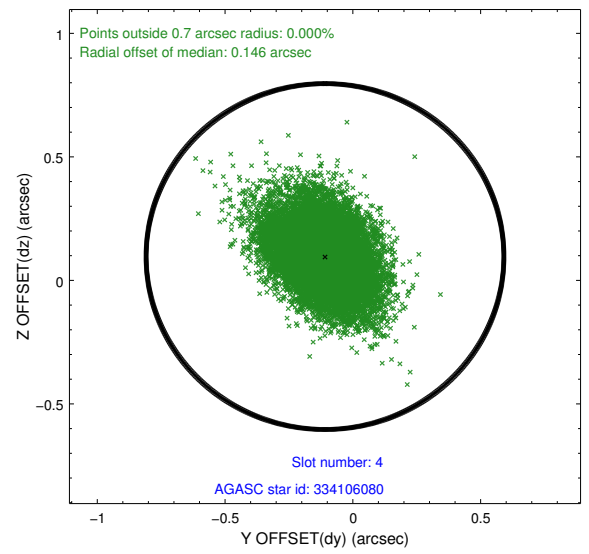
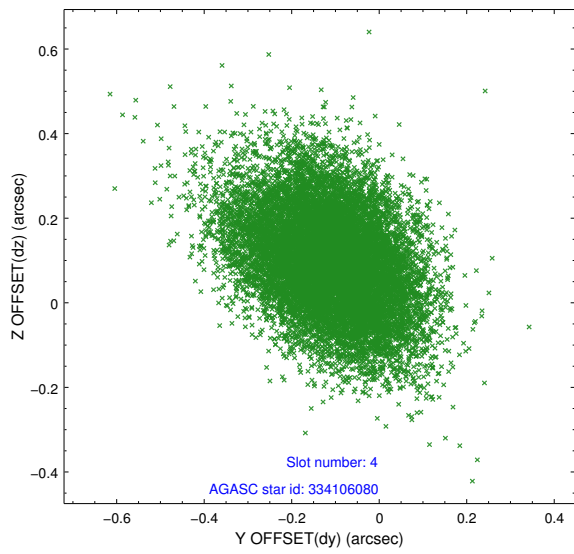
∞

## 2.4 Star Slots

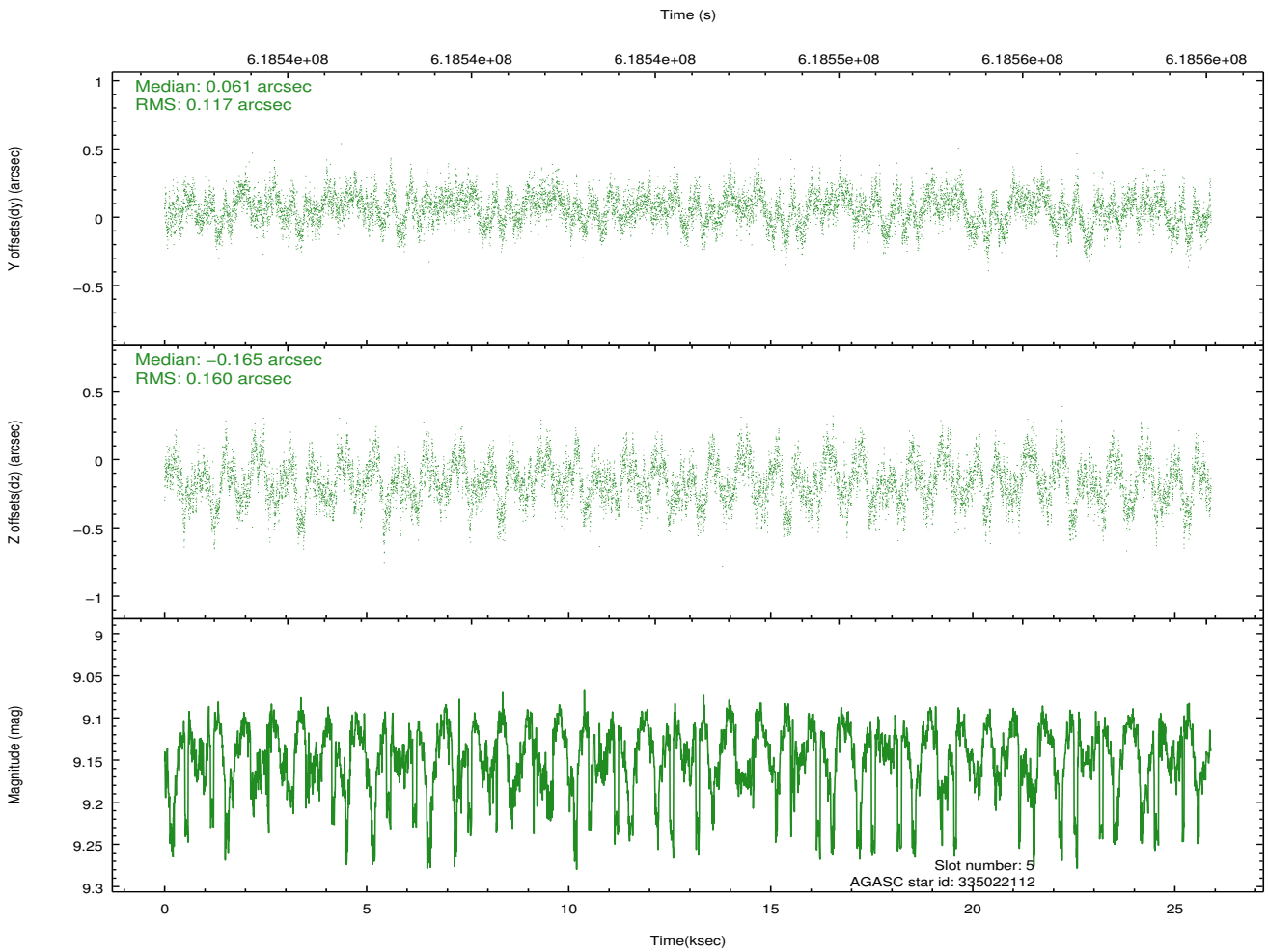
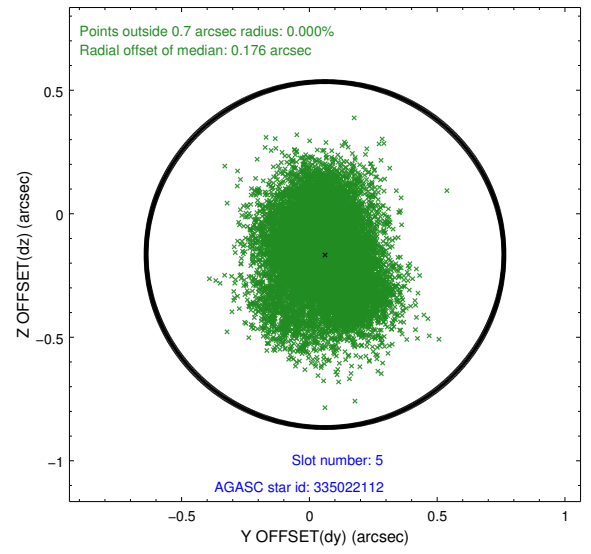
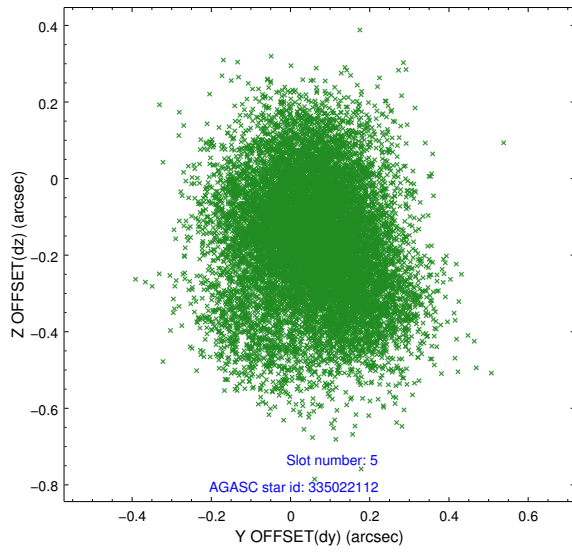
### 2.4.1 Slot 3



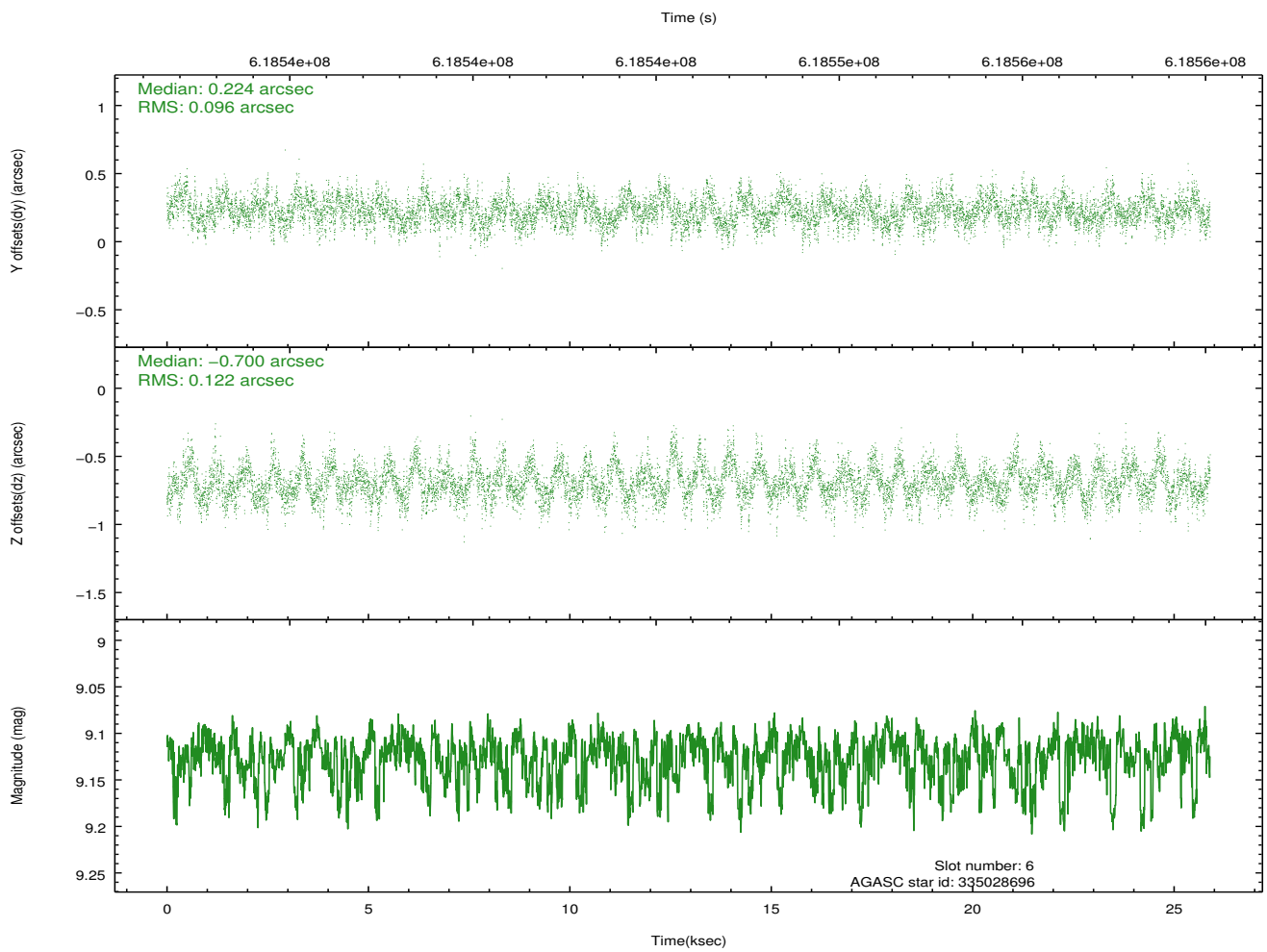
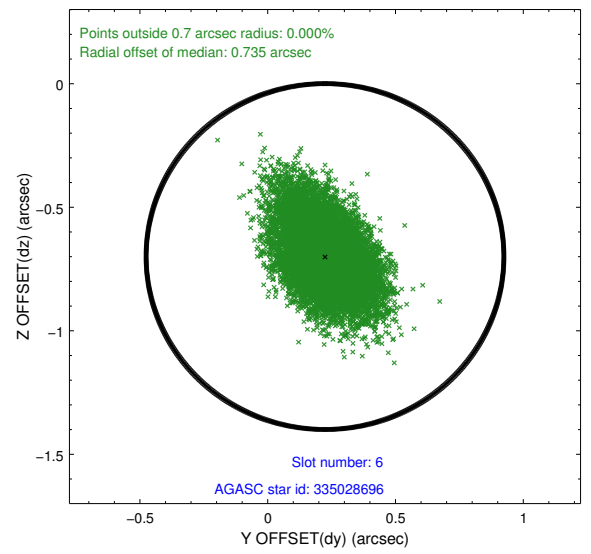
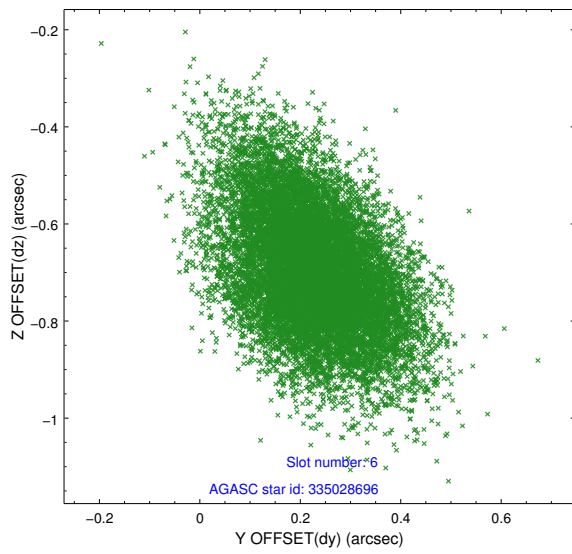
## 2.4.2 Slot 4



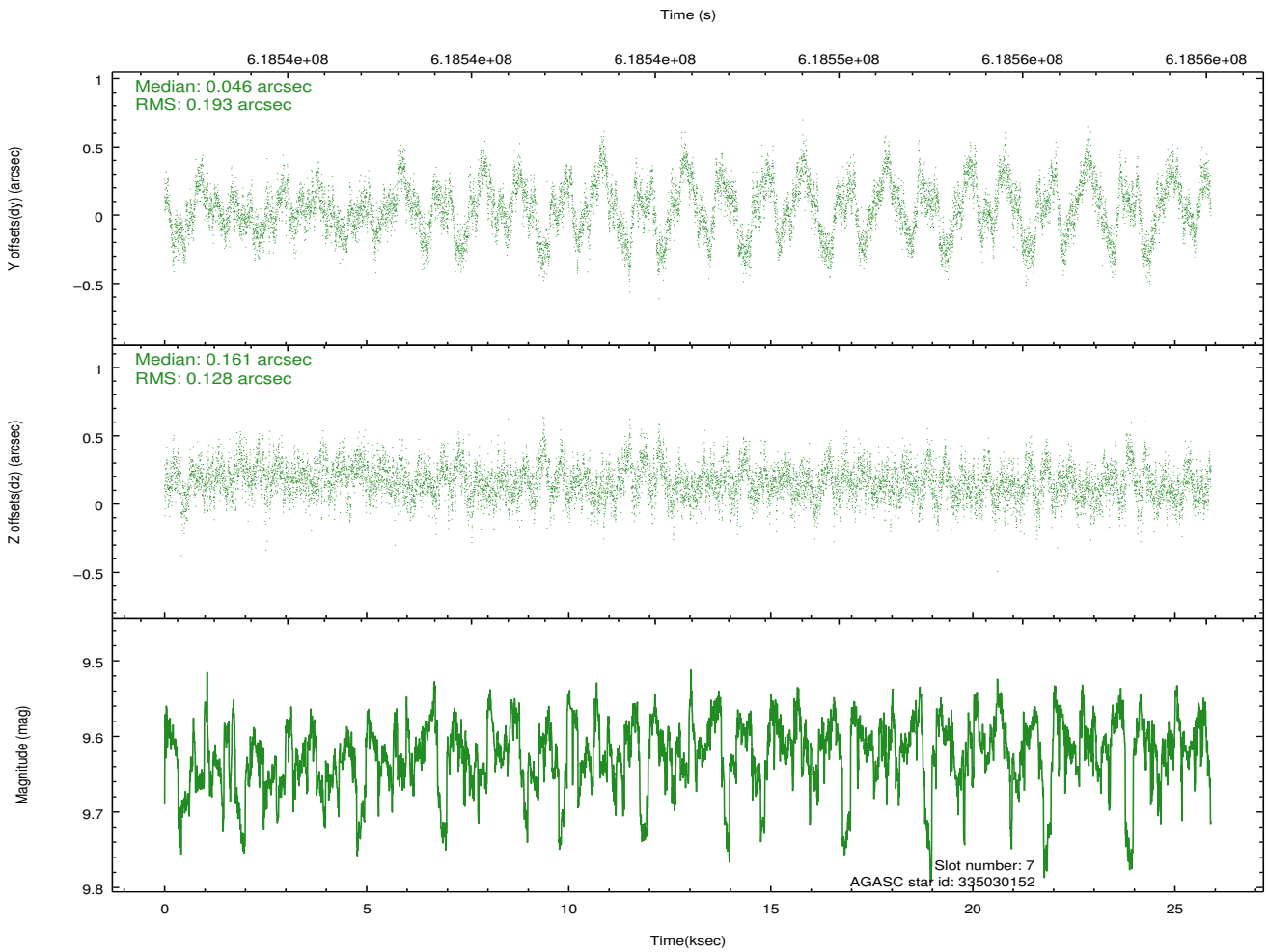
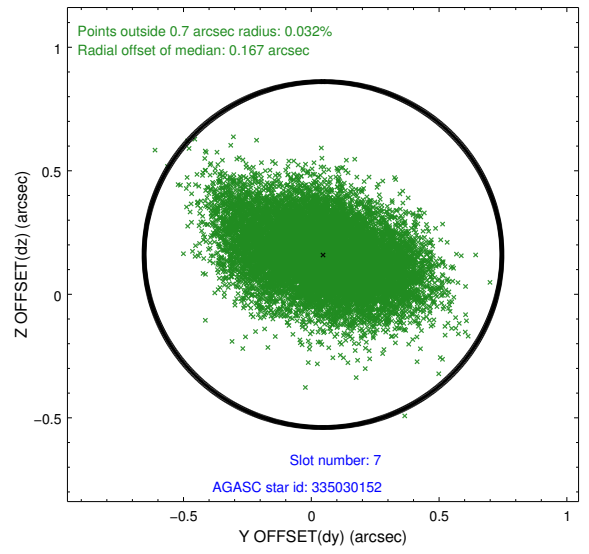
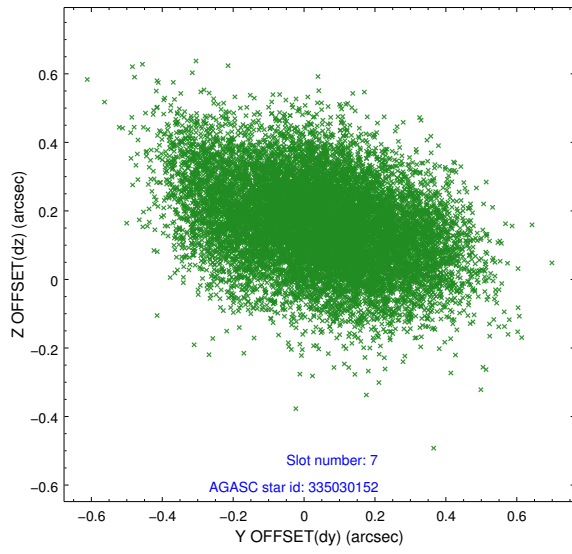
### 2.4.3 Slot 5



## 2.4.4 Slot 6

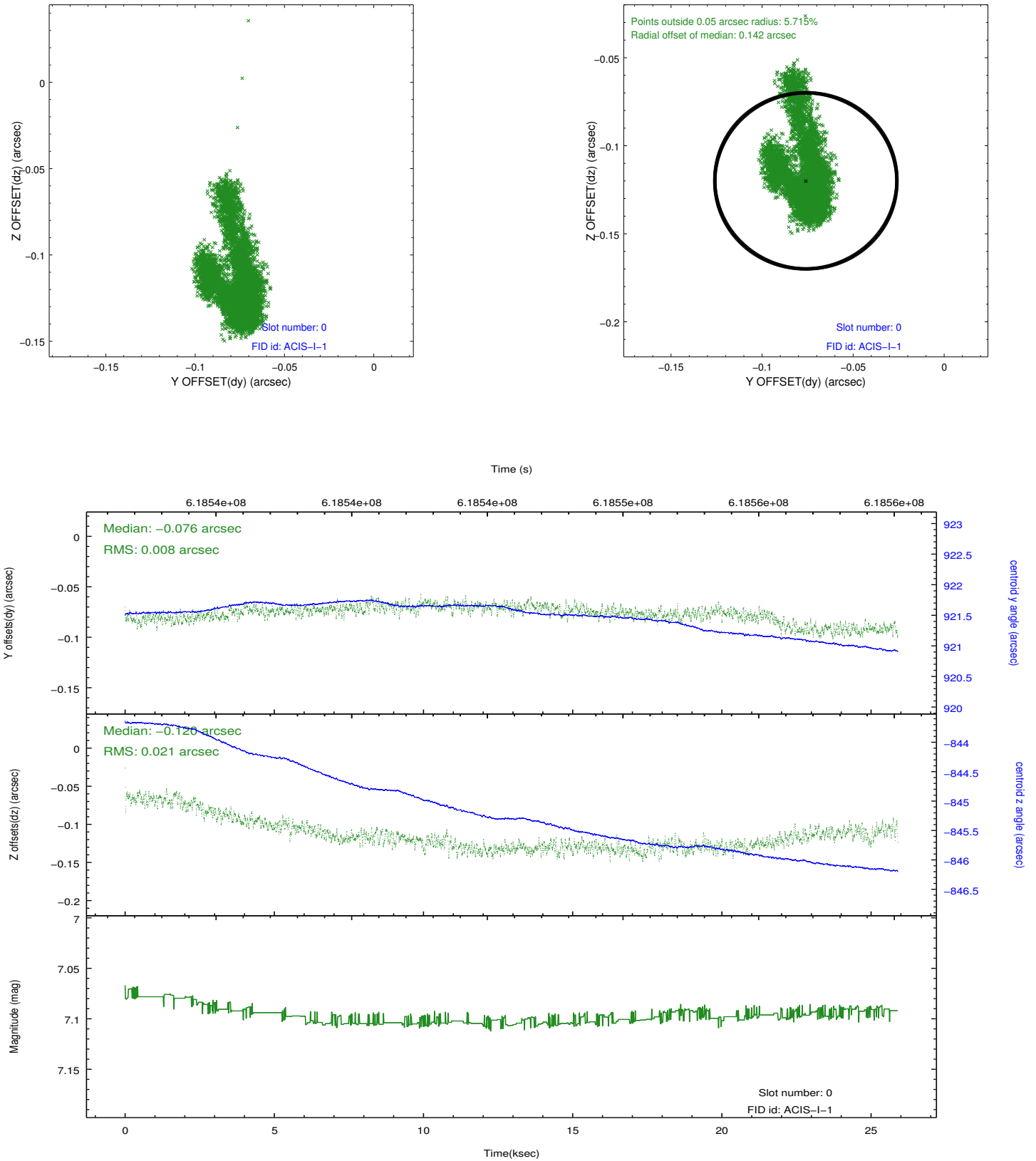


## 2.4.5 Slot 7

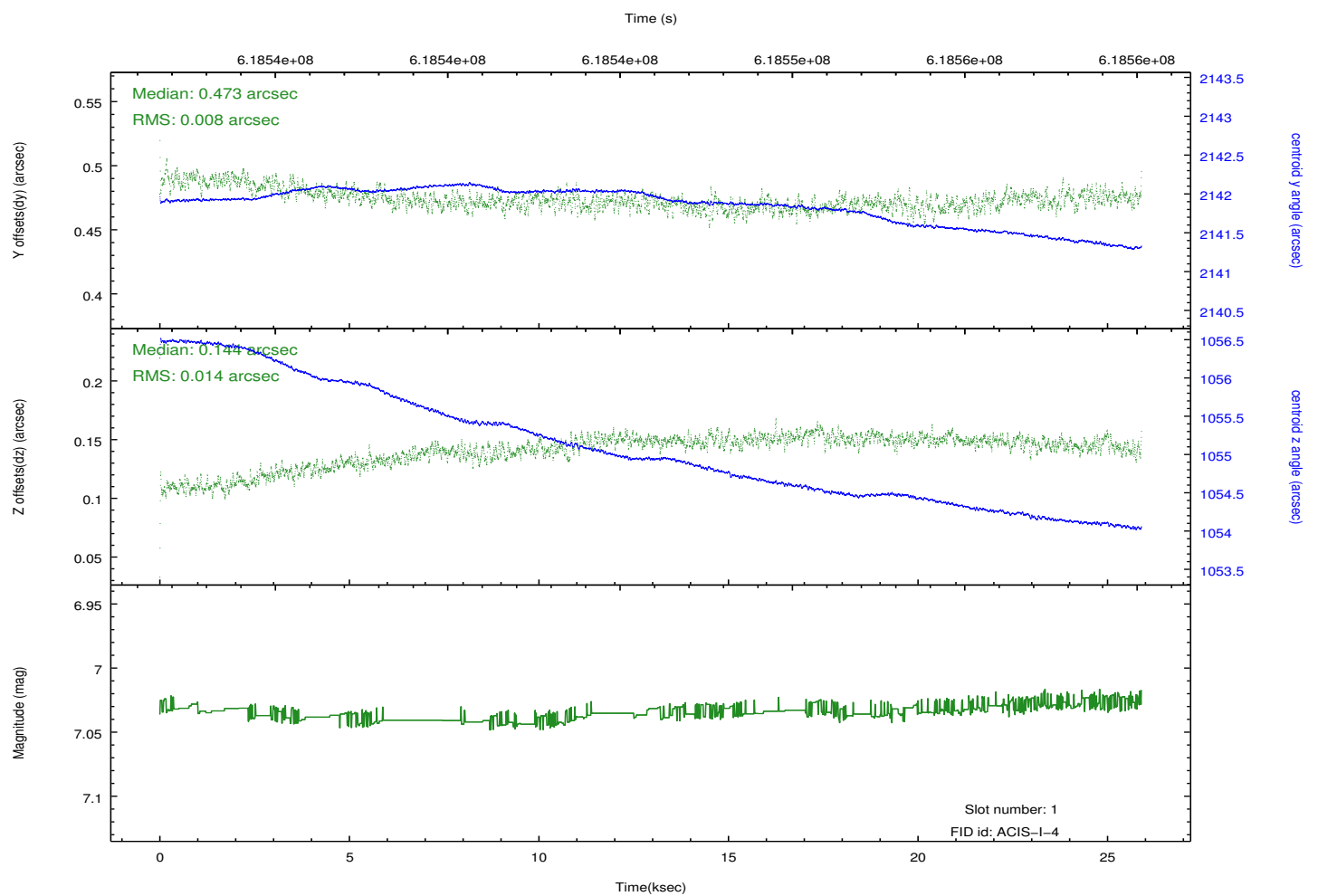
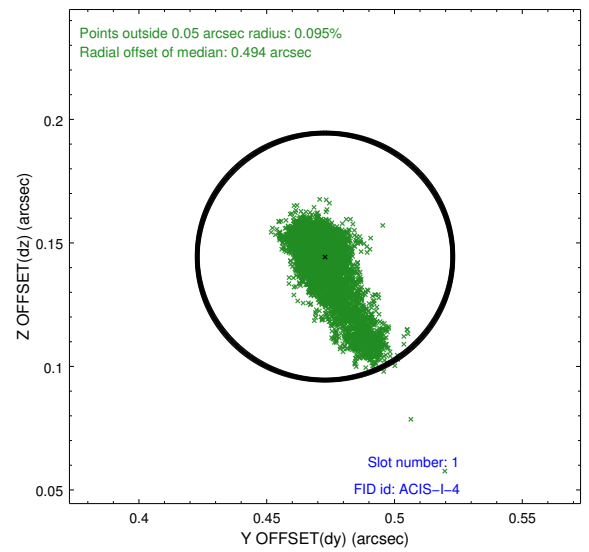
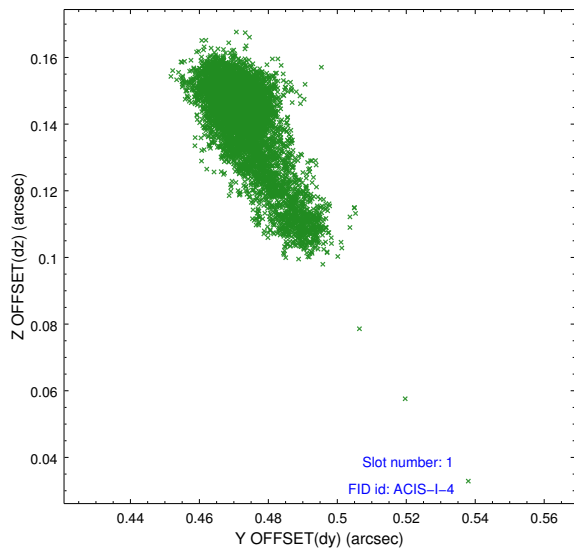


## 2.5 FID Slots

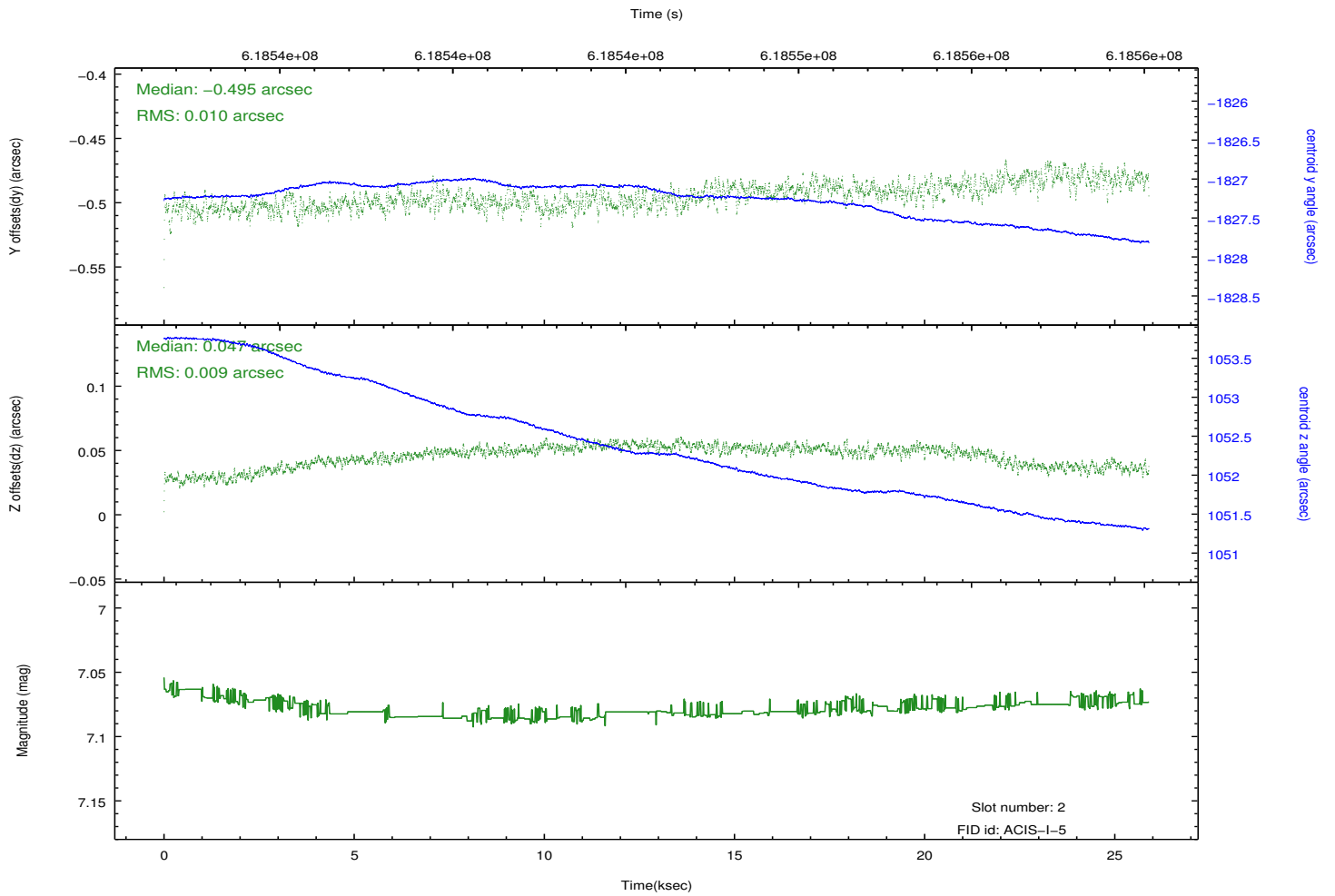
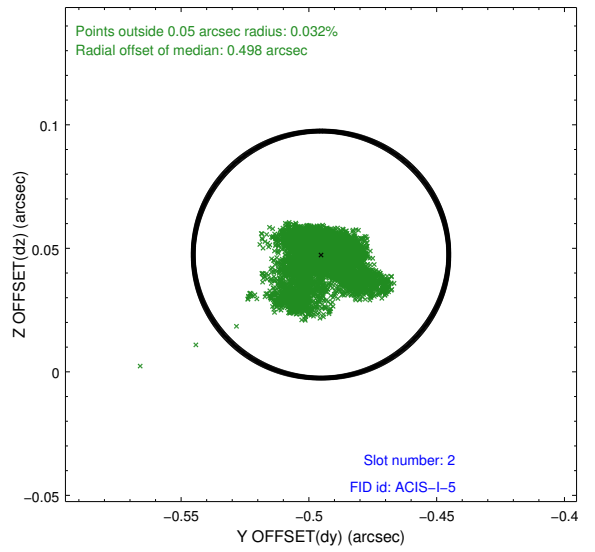
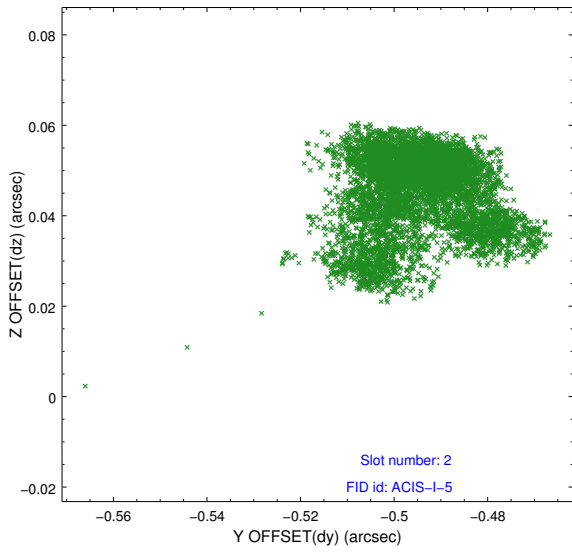
### 2.5.1 Slot 0



## 2.5.2 Slot 1



### 2.5.3 Slot 2



# A Summary

## A.1 Status

V&V Scientist	Beth Sundheim
V&V Date (YYYY-MM-DD)	2017.08.08
V&V Edition	1
V&V Disposition and Status	OK
V&V Charge Time	25.05101816237

## A.2 Comments