

# V&V Reference Report

## L2 ASCDS Version : 10.6

Observation 20428 - L2 Version 1  
Chandra X-Ray Center

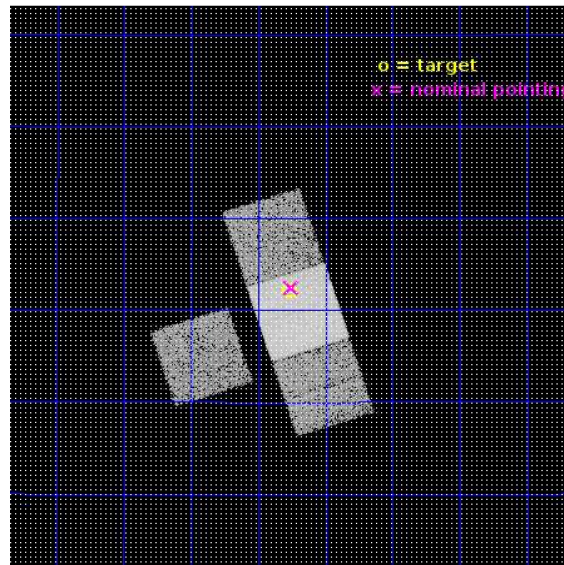
L2 Processing Date : Dec 25 2017

## Contents

<b>1</b>	<b>Front</b>	<b>2</b>
<b>2</b>	<b>OBI</b>	<b>3</b>
2.1	OBI . . . . .	3
2.1.1	Images . . . . .	3
2.1.2	Bias . . . . .	3
2.1.3	Parameters . . . . .	4
2.1.4	Events . . . . .	4
2.2	Compared Parameters . . . . .	5
2.3	Aspect . . . . .	6
2.4	Star Slots . . . . .	9
2.4.1	Slot 3 . . . . .	9
2.4.2	Slot 4 . . . . .	10
2.4.3	Slot 5 . . . . .	11
2.4.4	Slot 6 . . . . .	12
2.4.5	Slot 7 . . . . .	13
2.5	FID Slots . . . . .	14
2.5.1	Slot 0 . . . . .	14
2.5.2	Slot 1 . . . . .	15
2.5.3	Slot 2 . . . . .	16
<b>A</b>	<b>Summary</b>	<b>17</b>
A.1	Status . . . . .	17
A.2	Comments . . . . .	17

# 1 Front

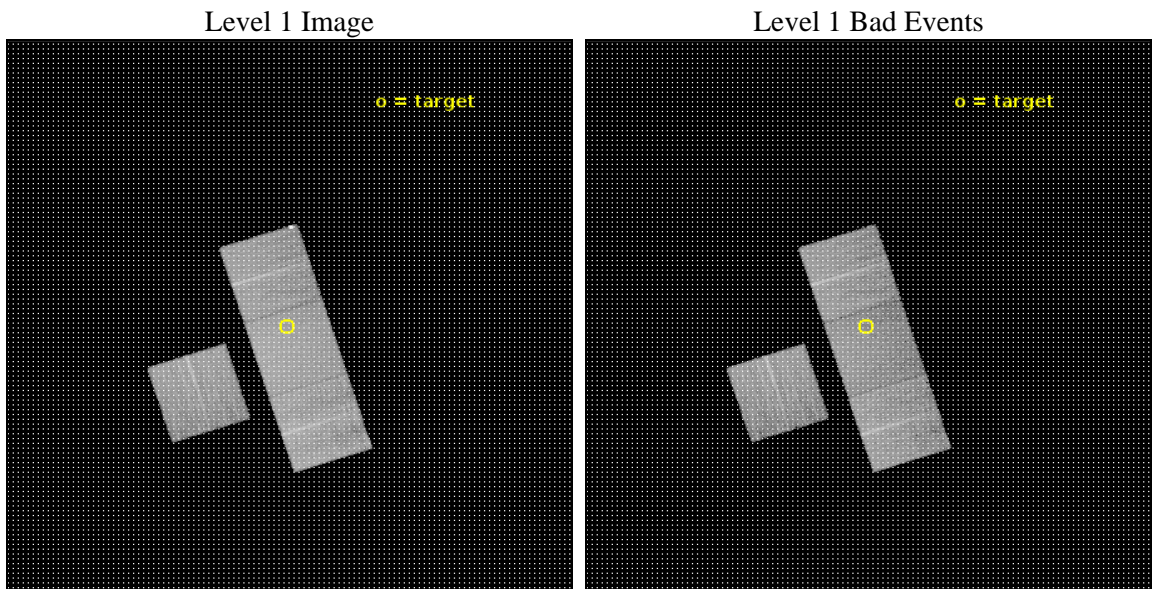
seq_num	703533	Sequence number
obs_id	20428	Observation id
title	X-Ray properties of Post-Merger Spheroidal Galaxies: The Missing Link in Understanding the Merger-AGN connection	Proposal title
observer	Preethi Nair	Principal investigator
object	SDSS J091815.96+202205.2	Source name
dtcycle	0	&#160
cycle	P	events from which exps? Prim/Second/Both
ra_targ	139.566667	Observer's specified target RA [deg]
dec_targ	20.368111	Observer's specified target Dec [deg]
ra_nom	139.56328130698	Nominal RA [deg]
dec_nom	20.374501557011	Nominal Dec [deg]
roll_nom	72.157820289568	Nominal Roll [deg]
revision	1	Processing version of data
ontime	13974.800107598	Sum of GTIs [s]
livetime	13792.209056094	Livetime [s]
ontime3	13974.721953511	Sum of GTIs [s]
ontime6	13974.762993574	Sum of GTIs [s]
ontime7	13974.800107598	Sum of GTIs [s]
ontime8	13974.680913568	Sum of GTIs [s]
l2events	84717	Number of level 2 events



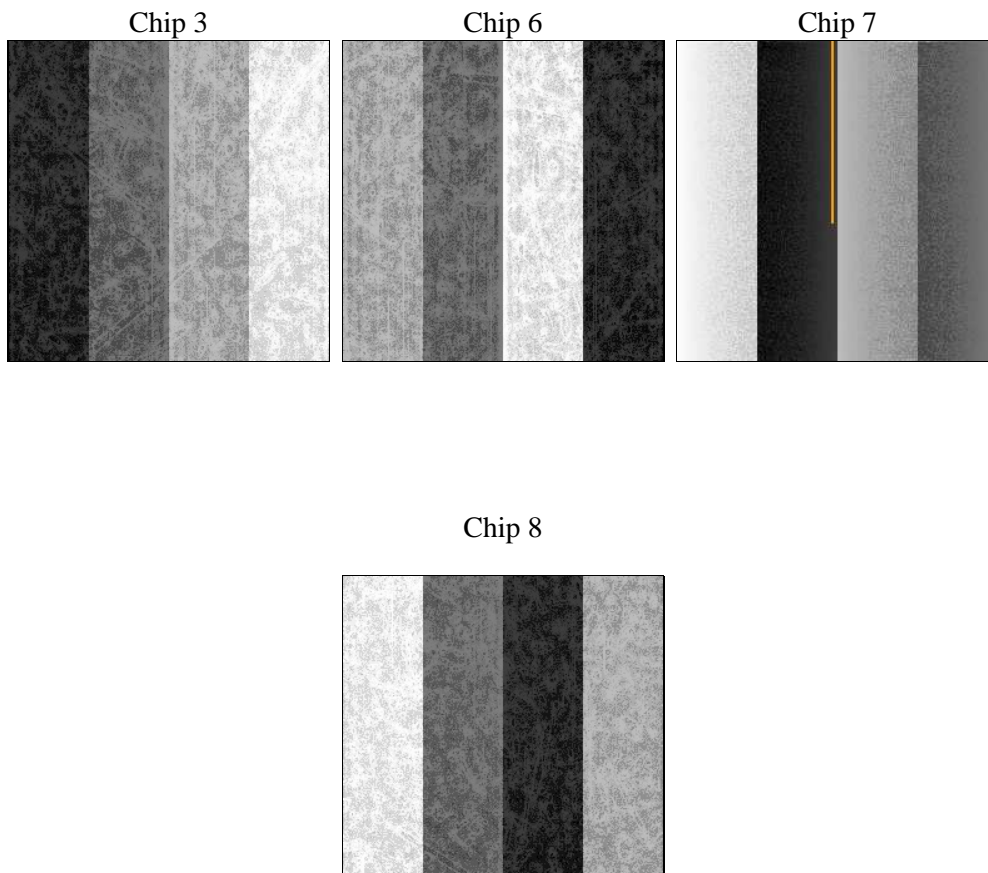
## 2 OBI

### 2.1 OBI

#### 2.1.1 Images



#### 2.1.2 Bias



### 2.1.3 Parameters

obi_num	0	Obi number	sched_exp_time	13912.857000	[s] Scheduled observation exposure time
ascdsver	10.6	Processing system revision	ontime	13974.800107598	Sum of GTIs [s]
caldbver	4.7.7	&#160	ontime3	13974.721953511	Sum of GTIs [s]
date	2017-12-25T19:21:12	Date and time of file creation	ontime6	13974.762993574	Sum of GTIs [s]
revision	1	Processing version of data	ontime7	13974.800107598	Sum of GTIs [s]
			ontime8	13974.680913568	Sum of GTIs [s]
			l1events	476298	Number of level 1 events

### 2.1.4 Events

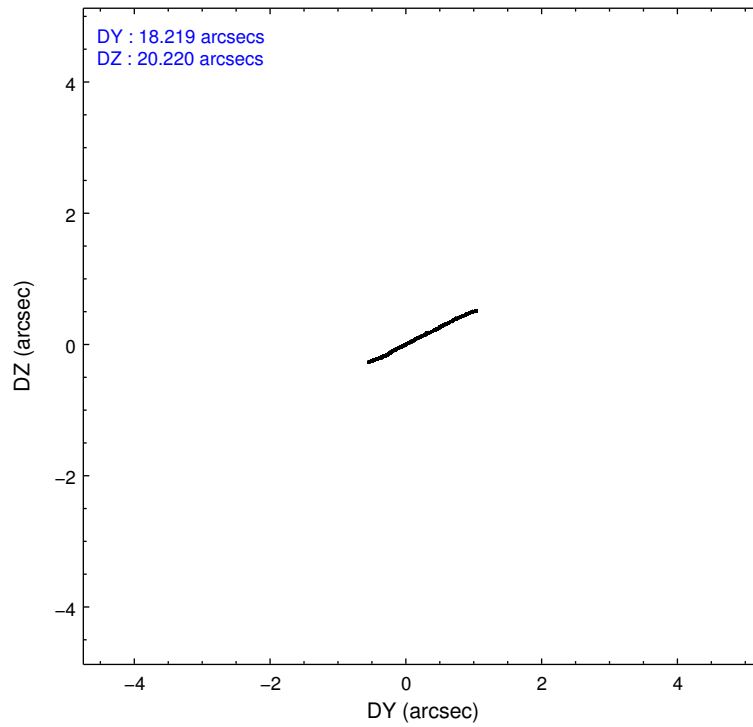
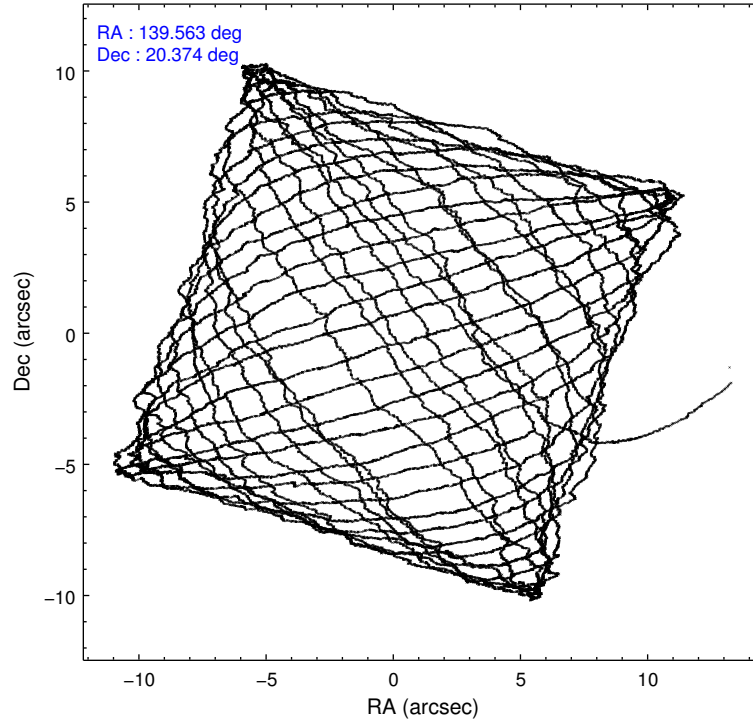
	ccd 3	ccd 6	ccd 7	ccd 8
level 1 events	102536	111279	130416	132067
rejected events	92461	95623	74169	99092
rejected %	90%	85%	56%	75%

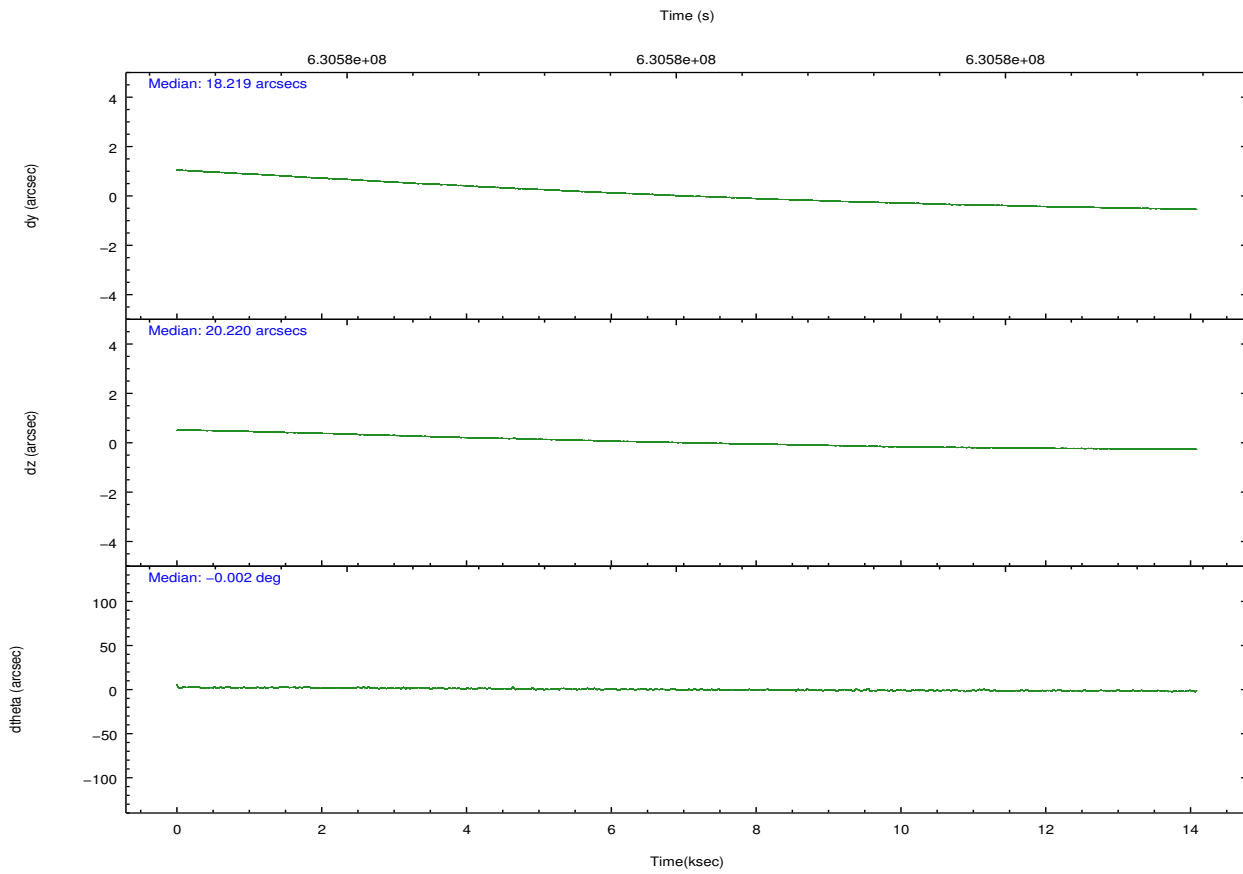
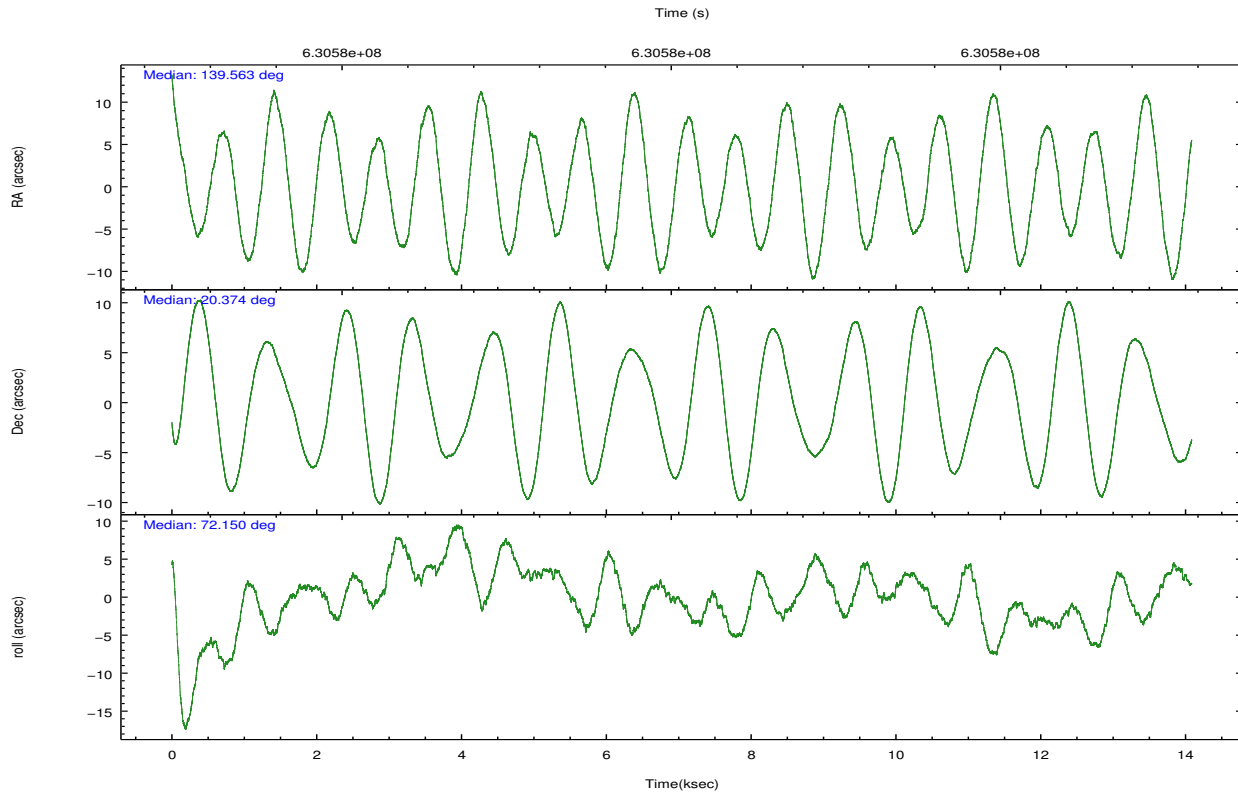
	ccd 3	ccd 6	ccd 7	ccd 8
grade 0 events	3401	7627	4756	9062
	3%	6%	3%	6%
grade 1 events	53	64	172	98
	0%	0%	0%	0%
grade 2 events	2261	2993	11357	8237
	2%	2%	8%	6%
grade 3 events	1089	998	4567	3407
	1%	0%	3%	2%
grade 4 events	1088	1023	4370	3135
	1%	0%	3%	2%
grade 5 events	4650	4406	12771	6933
	4%	3%	9%	5%
grade 6 events	2239	3027	31221	9146
	2%	2%	23%	6%
grade 7 events	87755	91141	61202	92049
	85%	81%	46%	69%

## 2.2 Compared Parameters

Parameter	Planned	Actual	Parameter	Planned	Actual
Instrument	ACIS	ACIS	Obspar format version number	7	7
Detector	ACIS-3678	ACIS-3678	Obspar file type	PREDICTED	ACTUAL
Grating	NONE	NONE	Obspar update status	NONE	UPDATED
Data mode	VFAINT	VFAINT	Number of optional ACIS chips dropped	0	0
Observation mode	POINTING	POINTING	On-chip summing requested	N	N
[deg] Pointing RA	139.569841	139.5632813069795	Subarray requested	NONE	NONE
[deg] Pointing Dec	20.347746	20.37450155701087	Alternating exposures requested	N	N
[deg] Pointing Roll	71.998897	72.15782028956801	[s] Primary exposure time	0.000000	3.1
[mm] SIM focus pos	-0.684267	-0.6828225247311905			
[mm] SIM defocus	0	0.001444936568705701			
[mm] SIM translation stage pos	-190.132523	-190.1425803651734			
[mm] SIM translation stage offset	0	0.01005778216563158			
[s] Observation start time (MET)	630573281.184000	630572369.46795			
Observation start date	2017-12-25T07:13:32	2017-12-25T06:59:29			
[s] Observation end time (MET)	630587194.184000	630588191.88138			
Observation end date	2017-12-25T11:05:25	2017-12-25T11:23:11			
Read mode	TIMED	TIMED			

## 2.3 Aspect



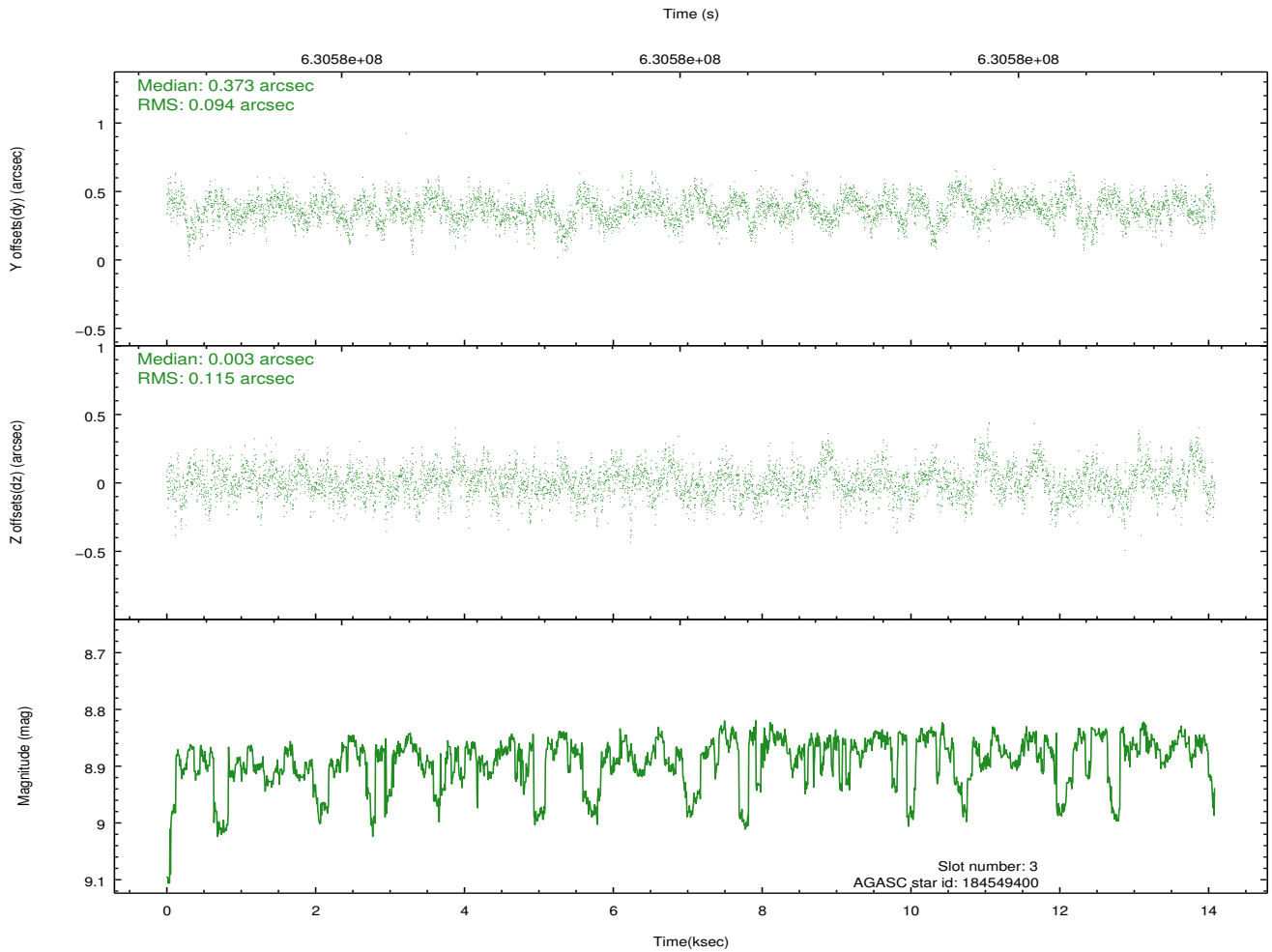
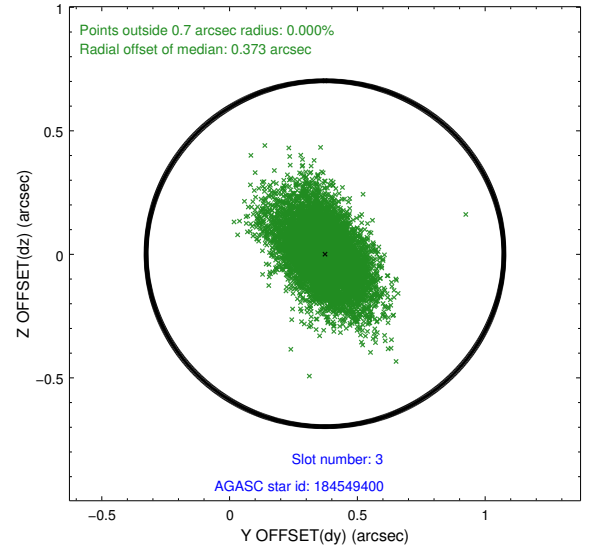
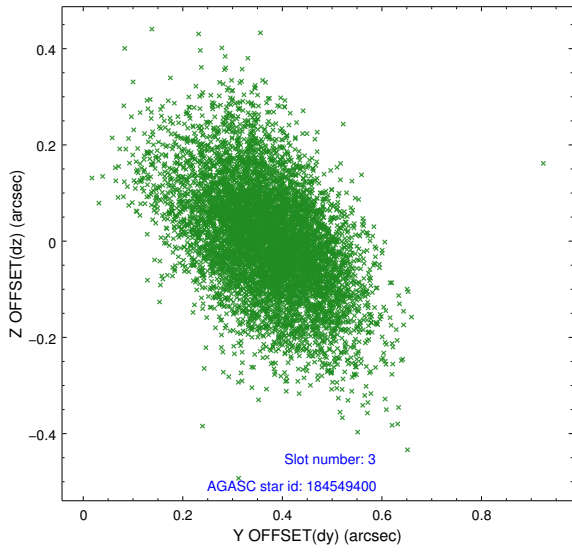


### Slot Statistics

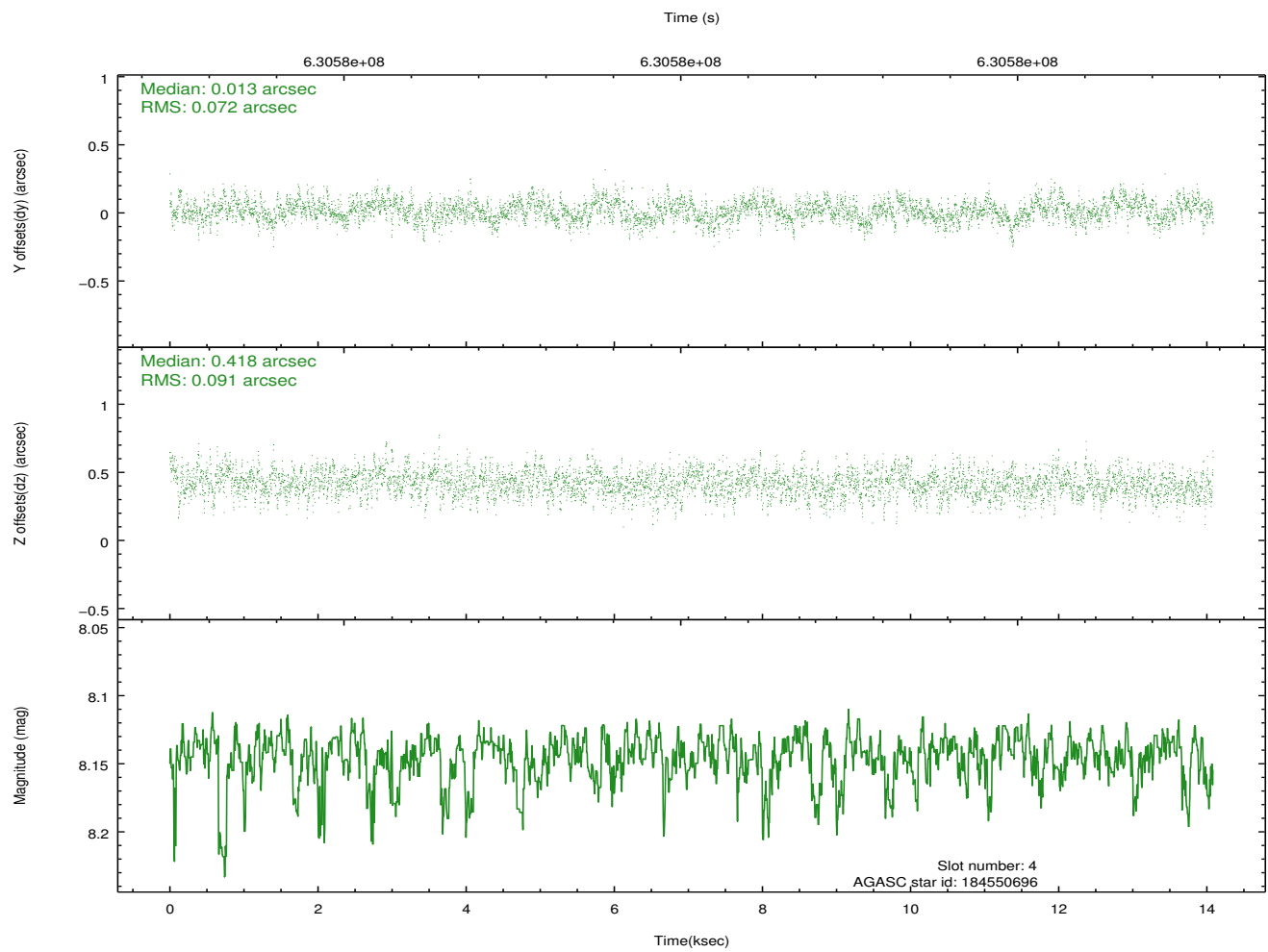
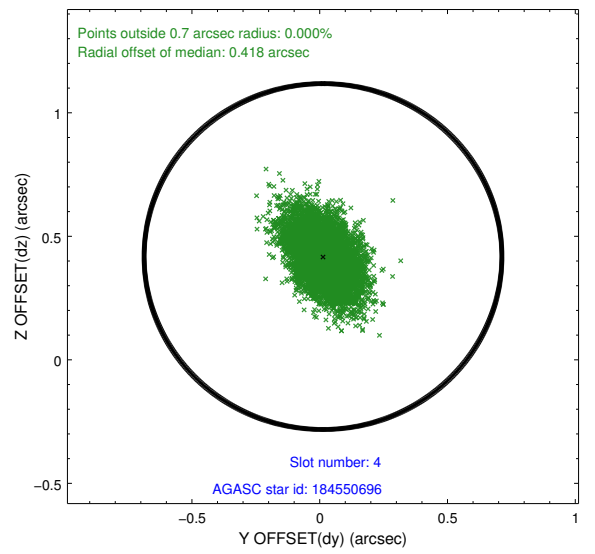
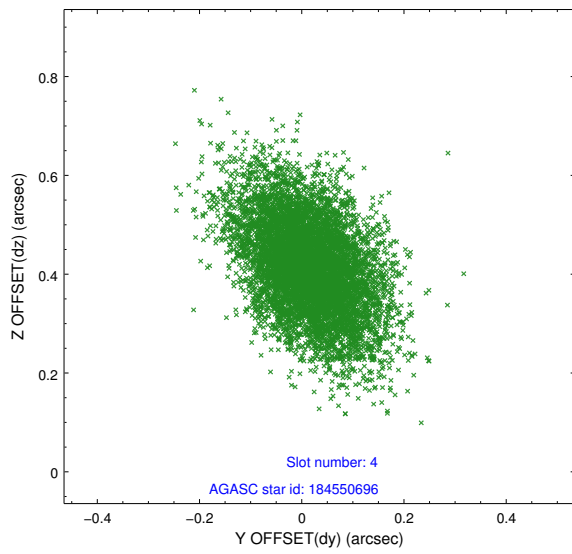
slot	status	used	id	mag	n_pts	med_dy	med_dz	dr1	dr2	ra	dec	mean_y	mean_z
0	FID		ACIS-S-2	7.15	3436	-0.339	-0.226	0.024	0.038	0.000000	0.000000	-771.78	-1741.93
1	FID		ACIS-S-4	7.25	3436	0.375	0.195	0.017	0.029	0.000000	0.000000	2142.13	166.52
2	FID		ACIS-S-6	7.39	3436	-0.063	0.035	0.011	0.017	0.000000	0.000000	391.00	804.19
3	GUIDE	used	184549400	8.88	6865	0.373	0.003	0.154	0.273	139.018475	20.073166	-1513.07	1468.14
4	GUIDE	used	184550696	8.14	6872	0.013	0.418	0.121	0.208	140.126404	20.425449	849.32	-1697.26
5	GUIDE	used	184560456	7.14	6871	-0.015	0.197	0.112	0.207	139.914483	20.546508	1040.92	-883.42
6	GUIDE	used	184560664	8.40	6865	-0.201	-0.168	0.144	0.248	139.165316	20.623238	523.55	1603.14
7	GUIDE	used	184561640	9.32	6861	-0.172	-0.443	0.169	0.277	139.169602	20.836041	1256.77	1824.59

## 2.4 Star Slots

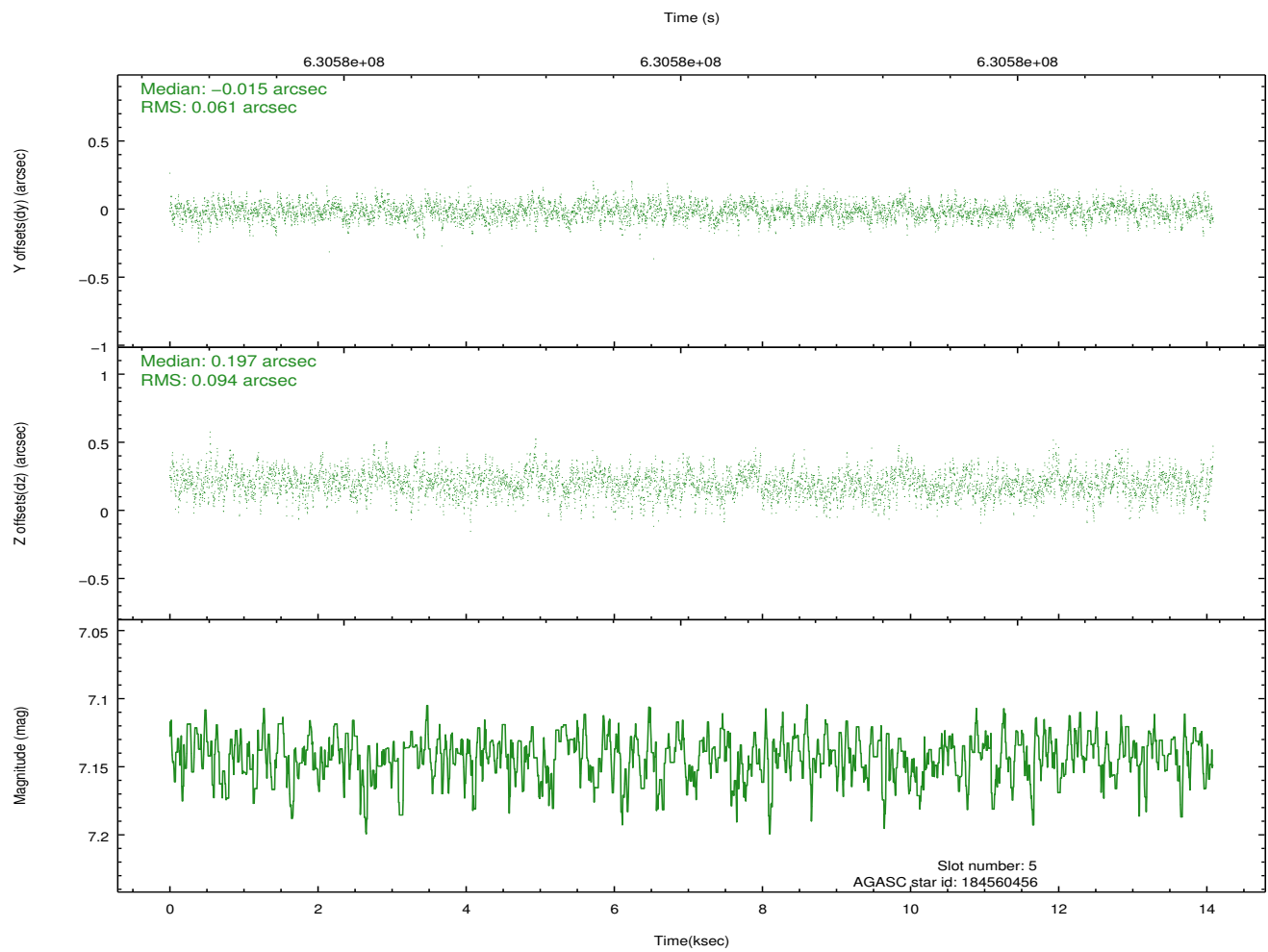
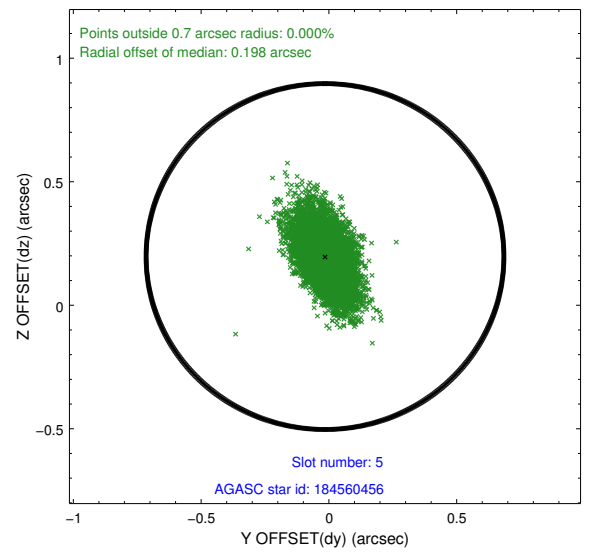
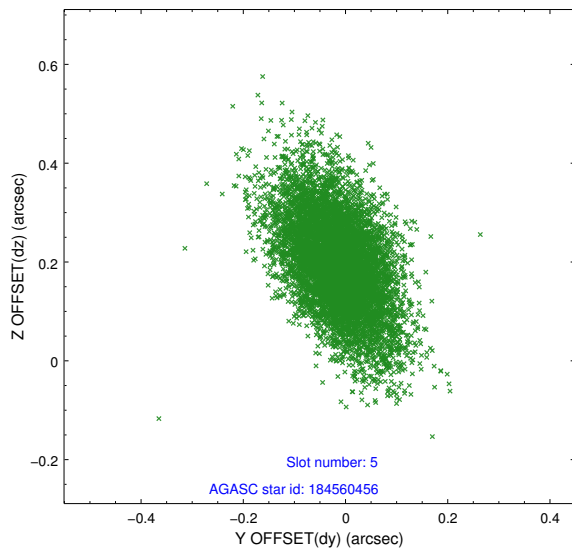
### 2.4.1 Slot 3



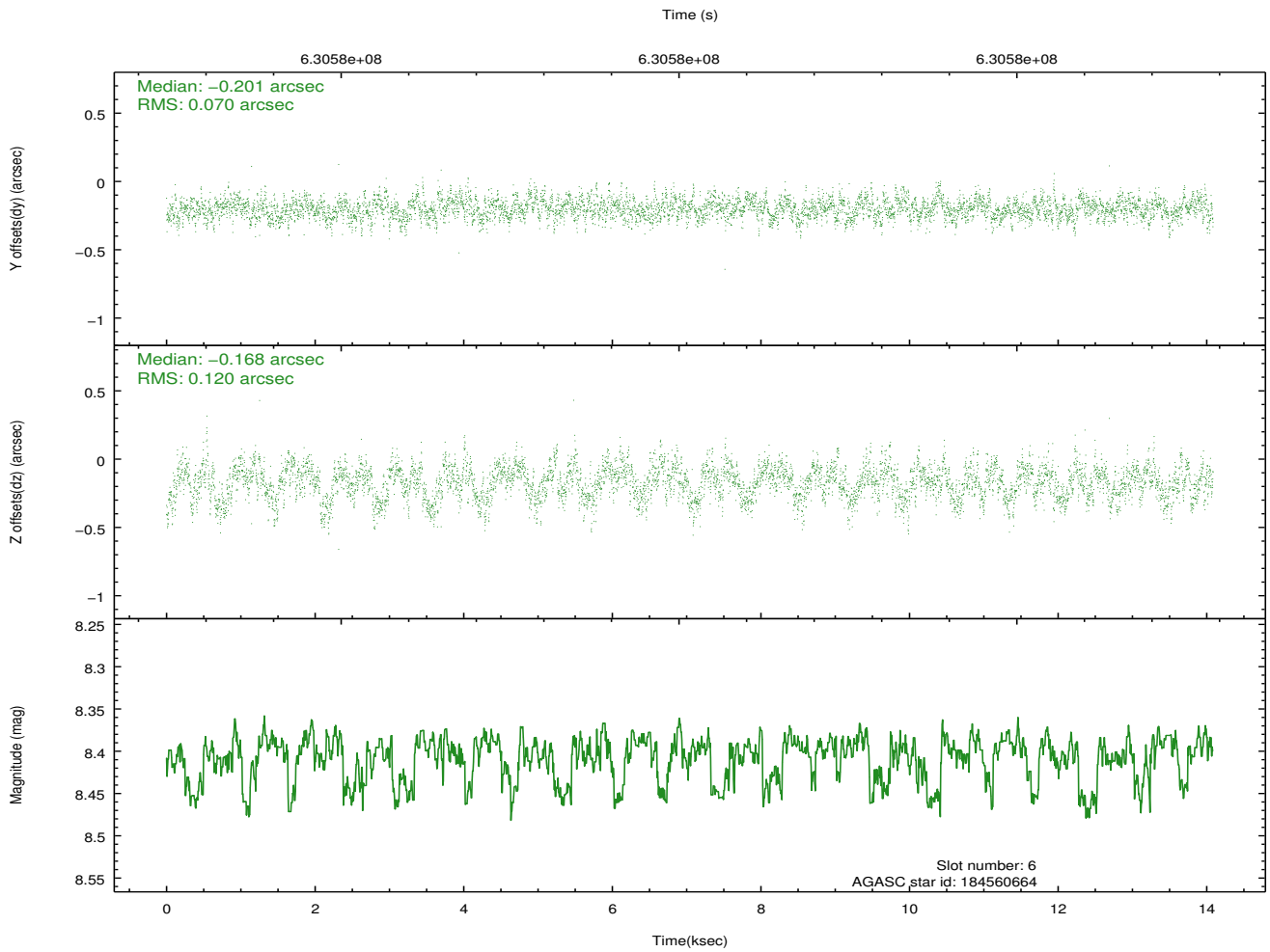
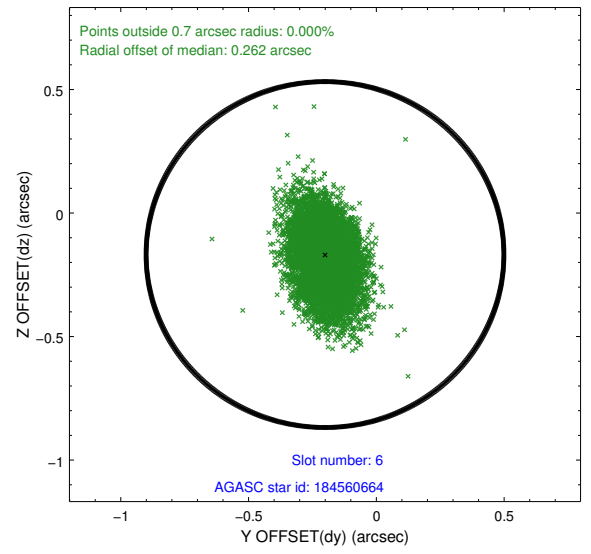
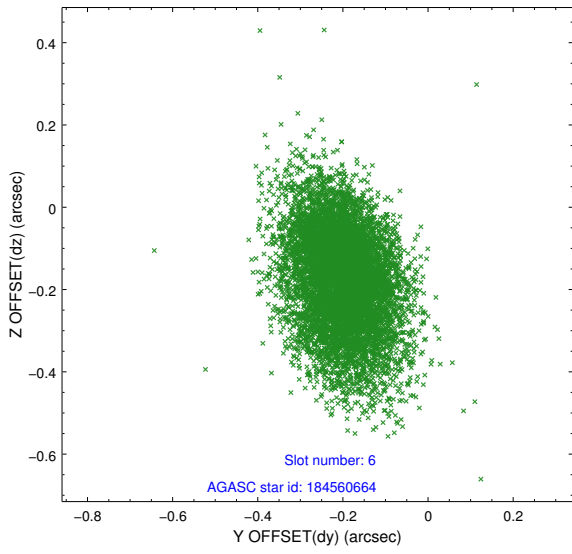
## 2.4.2 Slot 4



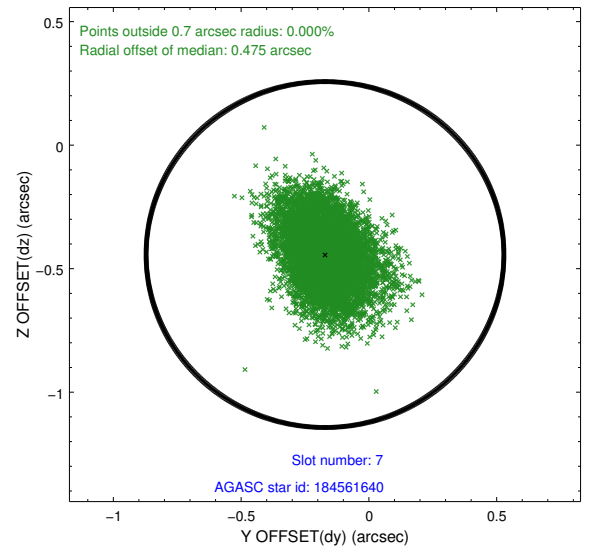
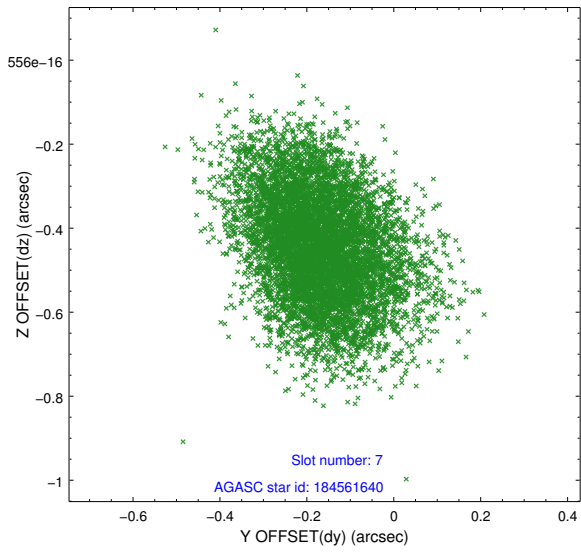
### 2.4.3 Slot 5



### 2.4.4 Slot 6

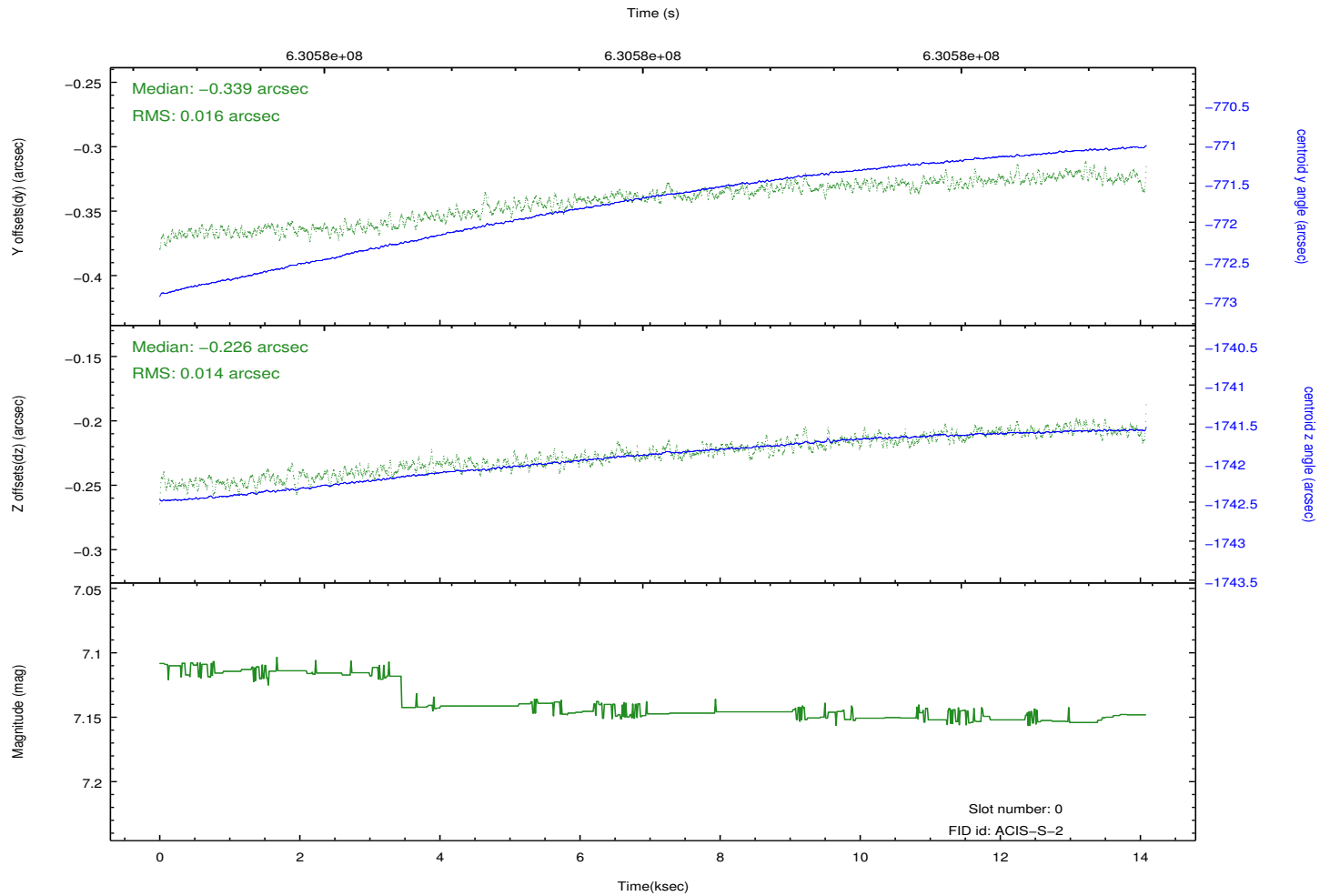
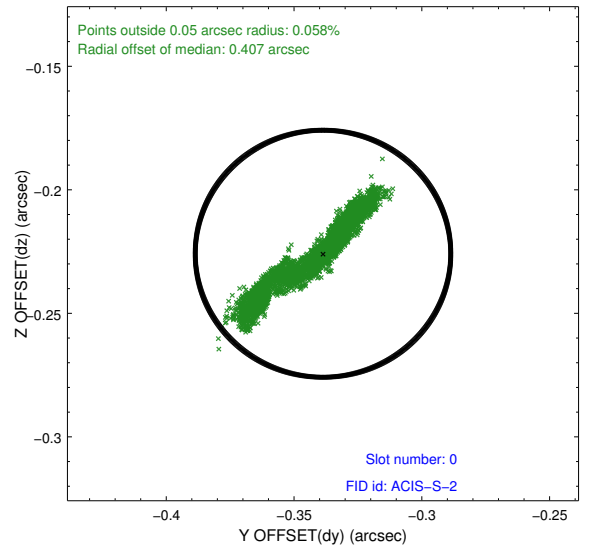
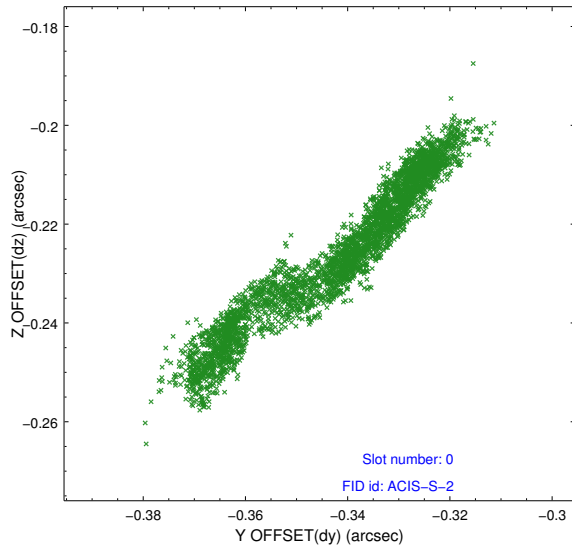


### 2.4.5 Slot 7

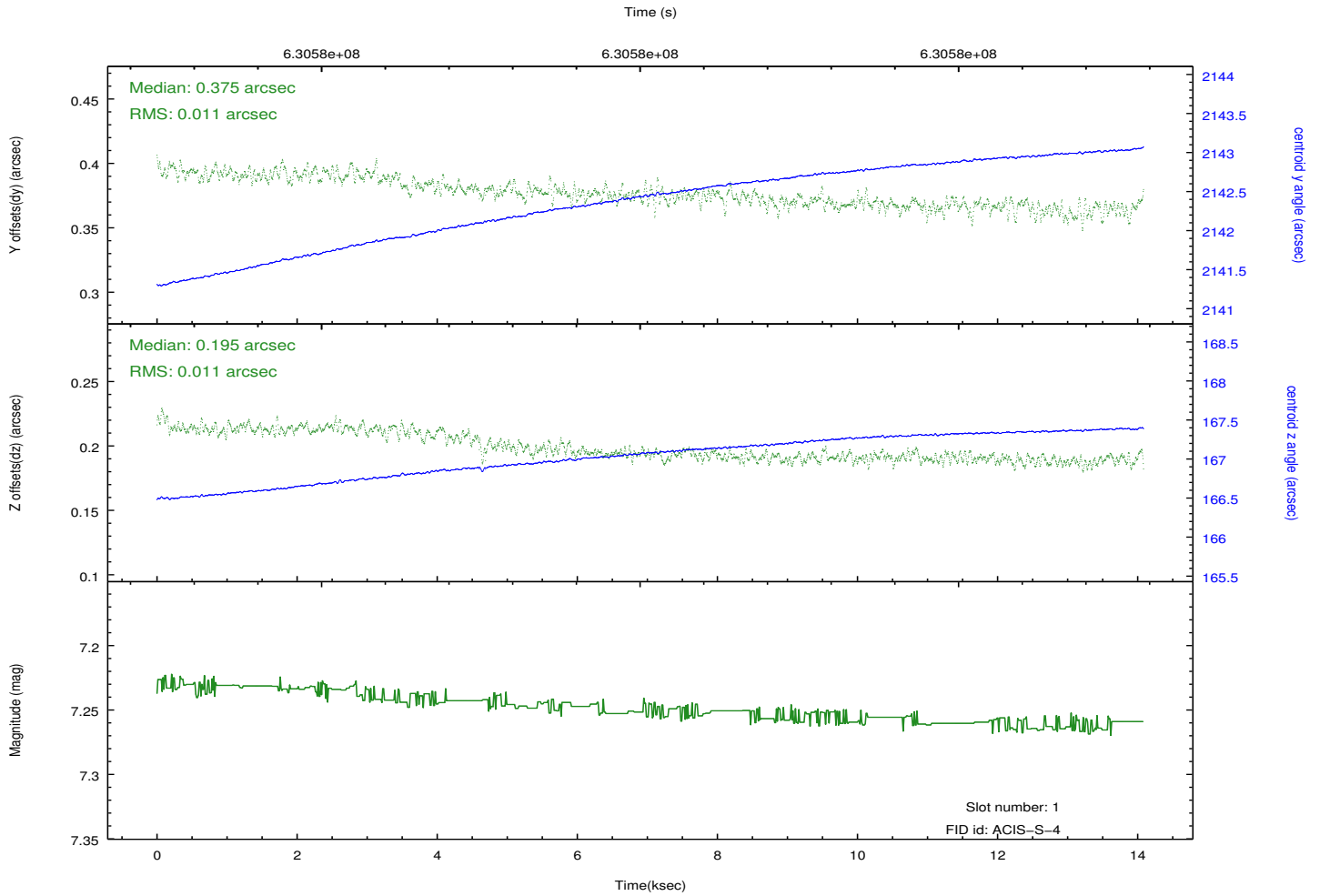
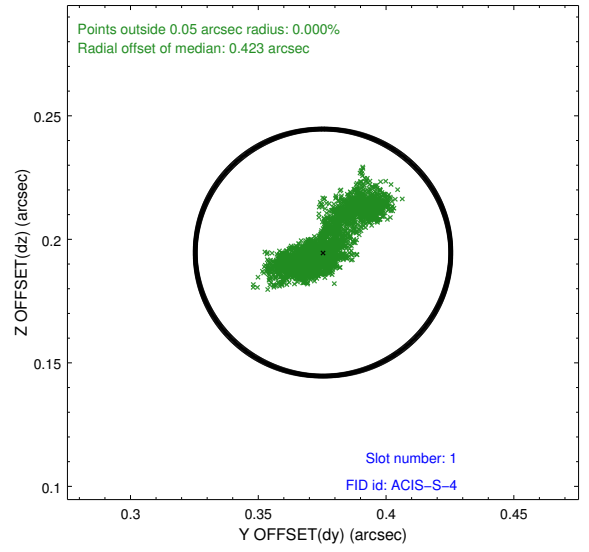
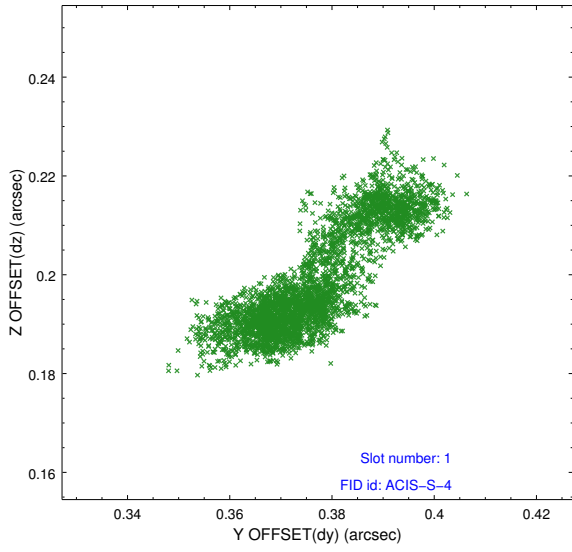


## 2.5 FID Slots

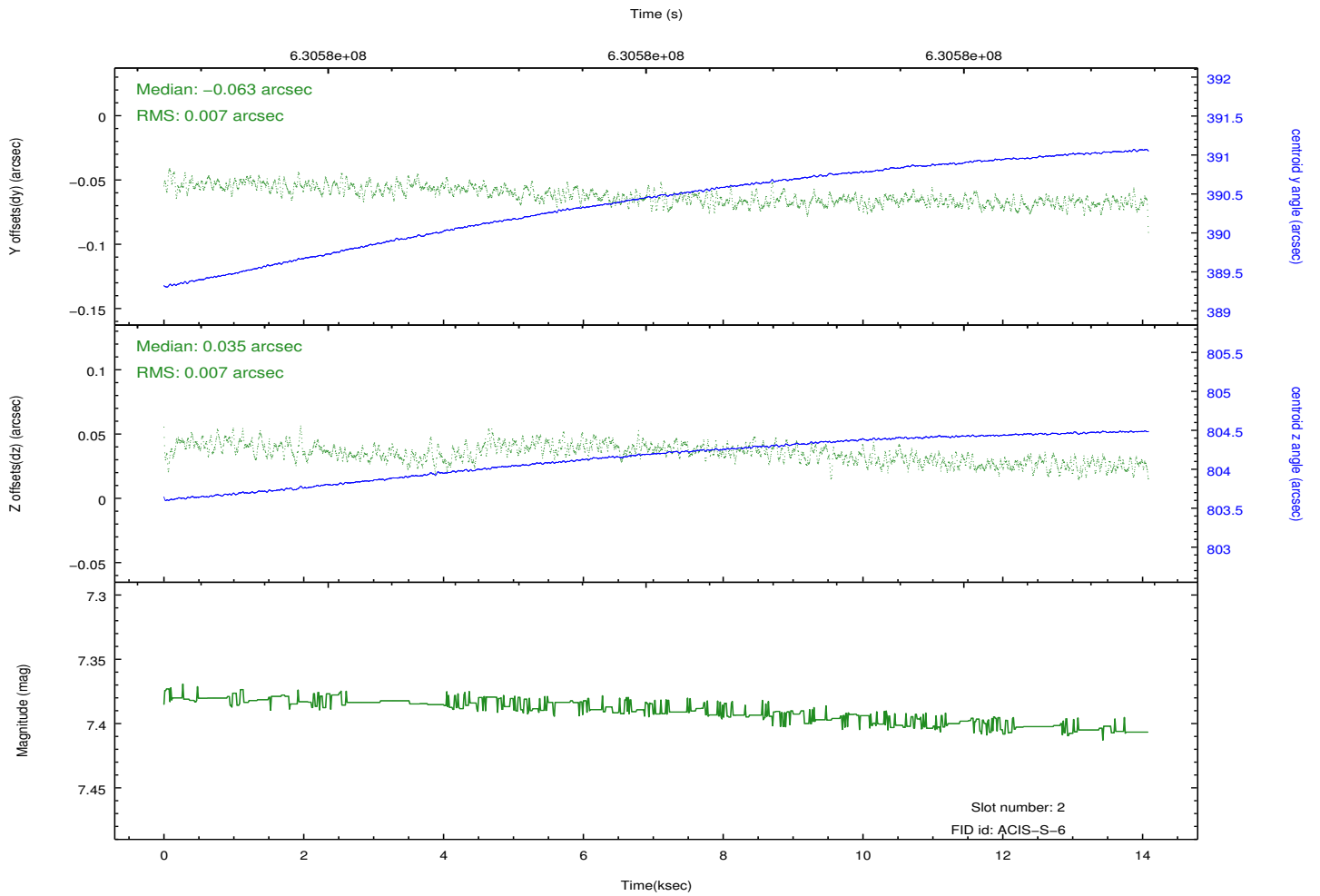
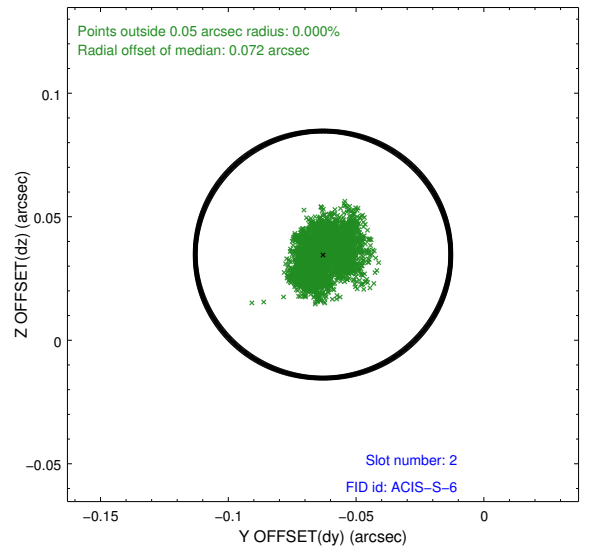
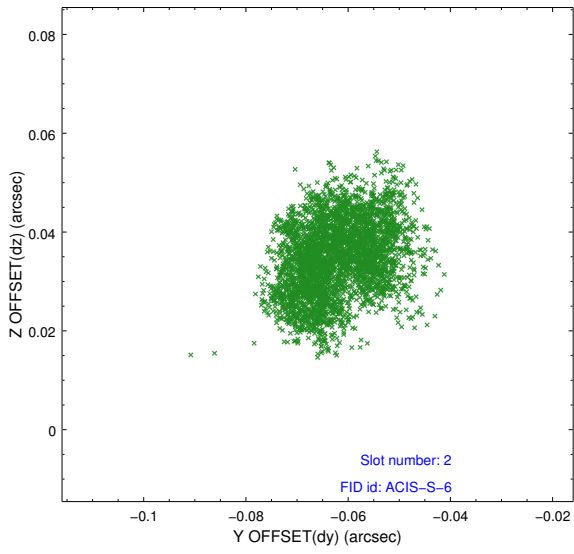
### 2.5.1 Slot 0



## 2.5.2 Slot 1



### 2.5.3 Slot 2



# A Summary

## A.1 Status

V&V Scientist	Jen Lauer
V&V Date (YYYY-MM-DD)	2017.12.26
V&V Edition	1
V&V Disposition and Status	OK
V&V Charge Time	13.974800107598

## A.2 Comments