

V&V Reference Report

L2 ASCDS Version : 10.7

Observation 21185 - L2 Version 1
Chandra X-Ray Center

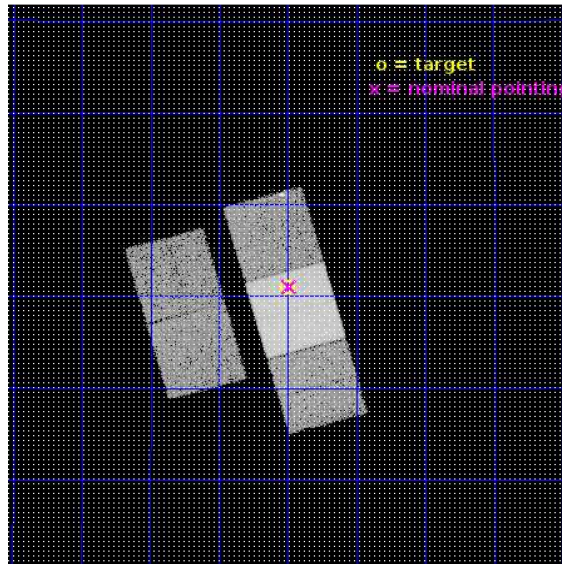
L2 Processing Date : Nov 30 2018

Contents

1	Front	2
2	OBI	3
2.1	OBI	3
2.1.1	Images	3
2.1.2	Bias	3
2.1.3	Parameters	4
2.1.4	Events	4
2.2	Compared Parameters	5
2.3	Aspect	6
2.4	Star Slots	9
2.4.1	Slot 3	9
2.4.2	Slot 4	10
2.4.3	Slot 5	11
2.4.4	Slot 6	12
2.4.5	Slot 7	13
2.5	FID Slots	14
2.5.1	Slot 0	14
2.5.2	Slot 1	15
2.5.3	Slot 2	16
A	Summary	17
A.1	Status	17
A.2	Comments	17

1 Front

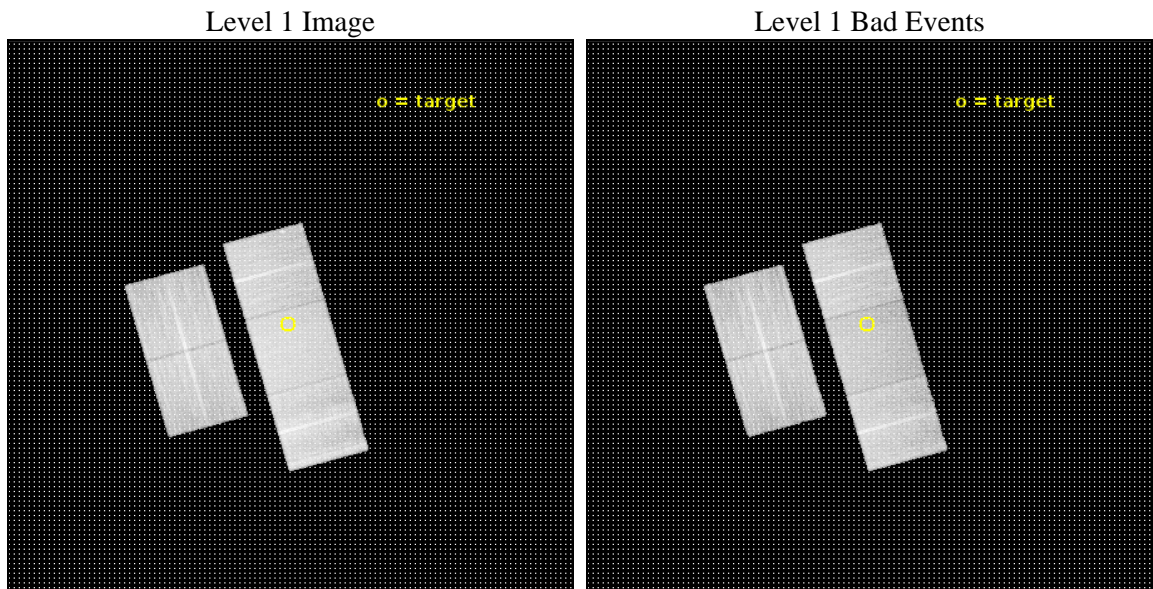
seq_num	201239	Sequence number
obs_id	21185	Observation id
title	Does accretion effect the X-ray emission of Herbig stars?	Proposal
observer	Christian Schneider	Principal investigator
object	HD 250550	Source name
dtycycle	0	
cycle	P	events from which exps? Prim/Second/Both
ra_targ	90.5	Observer's specified target RA [deg]
dec_targ	16.51575	Observer's specified target Dec [deg]
ra_nom	90.497167068715	Nominal RA [deg]
dec_nom	16.517420255677	Nominal Dec [deg]
roll_nom	74.317207673178	Nominal Roll [deg]
revision	1	Processing version of data
ontime	20053.900154352	Sum of GTIs [s]
livetime	19791.881185369	Livetime [s]
ontime2	20050.759104252	Sum of GTIs [s]
ontime3	20053.900154352	Sum of GTIs [s]
ontime6	20047.618103981	Sum of GTIs [s]
ontime7	20053.900154352	Sum of GTIs [s]
ontime8	20050.759084225	Sum of GTIs [s]
l2events	145507	Number of level 2 events



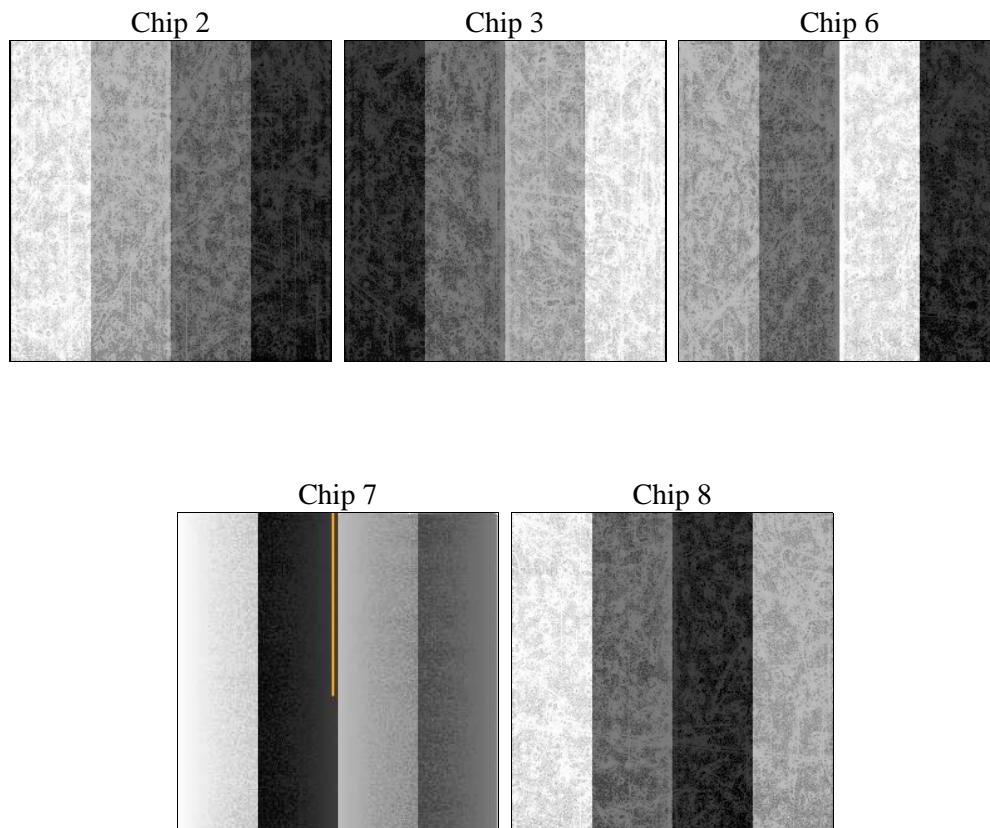
2 OBI

2.1 OBI

2.1.1 Images



2.1.2 Bias



2.1.3 Parameters

obi_num	0	Obi number	sched_exp_time	20000.000000	[s] Scheduled observation exposure time
ascdsver	10.7	Processing system revision	ontime	20053.900154352	Sum of GTIs [s]
caldbver	4.8.0.1	 	ontime2	20050.759104252	Sum of GTIs [s]
date	2018-11-30T05:01:18	Date and time of file creation	ontime3	20053.900154352	Sum of GTIs [s]
revision	1	Processing version of data	ontime6	20047.618103981	Sum of GTIs [s]
			ontime7	20053.900154352	Sum of GTIs [s]
			ontime8	20050.759084225	Sum of GTIs [s]
			l1events	879515	Number of level 1 events

2.1.4 Events

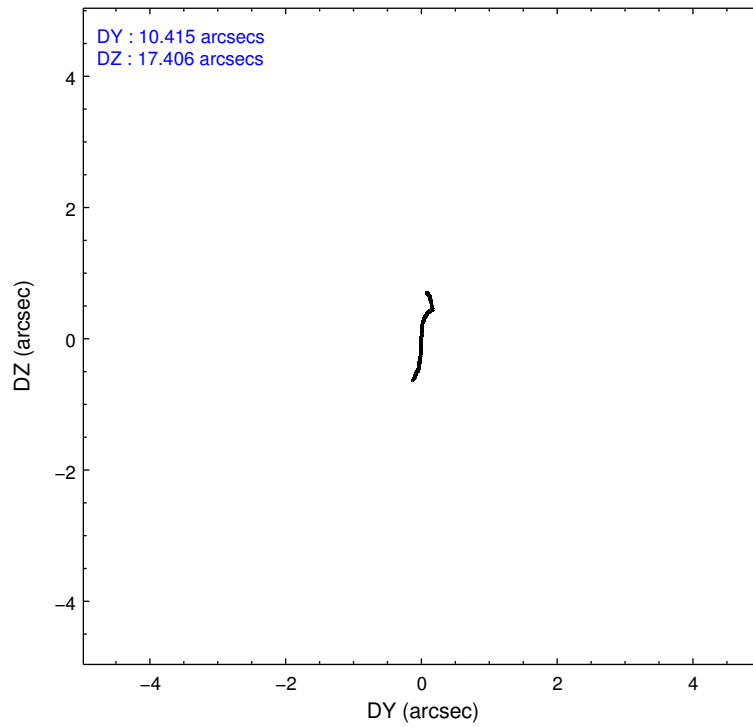
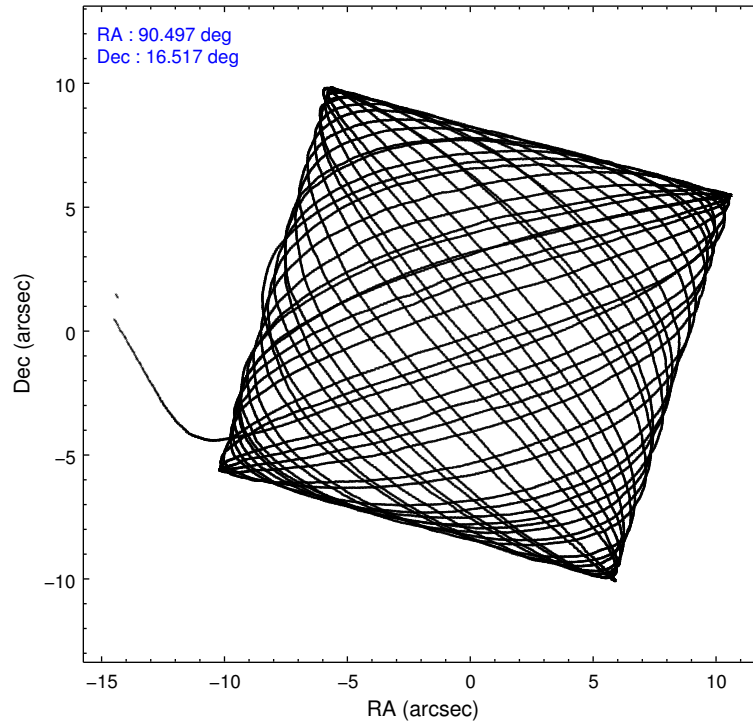
	ccd 2	ccd 3	ccd 6	ccd 7	ccd 8
level 1 events	156163	154903	166745	199280	202424
rejected events	140085	139105	148475	113034	148762
rejected %	89%	89%	89%	56%	73%

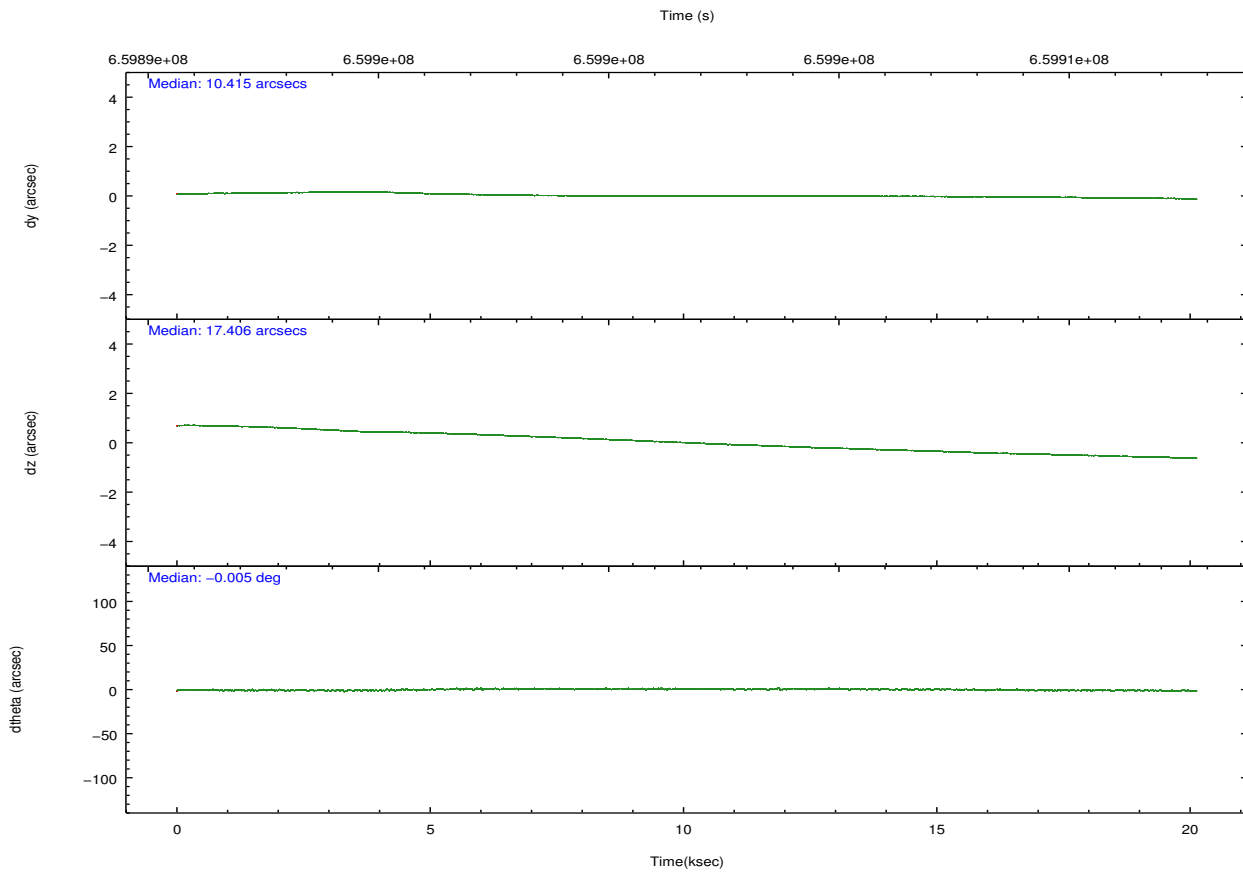
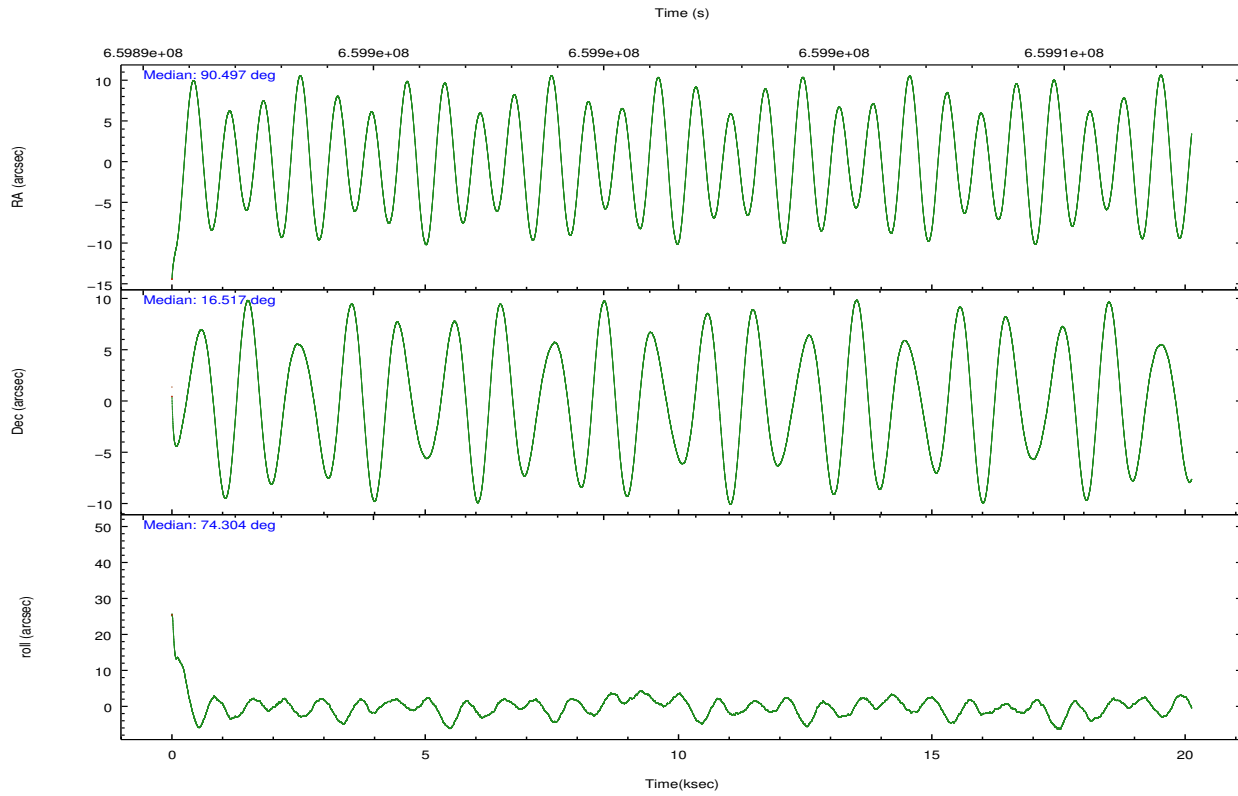
	ccd 2	ccd 3	ccd 6	ccd 7	ccd 8
grade 0 events	5657	5487	6044	7205	14829
	3%	3%	3%	3%	7%
grade 1 events	99	90	87	279	162
	0%	0%	0%	0%	0%
grade 2 events	3941	3526	4406	18317	13195
	2%	2%	2%	9%	6%
grade 3 events	1588	1623	1761	6930	5587
	1%	1%	1%	3%	2%
grade 4 events	1665	1638	1653	6865	5249
	1%	1%	0%	3%	2%
grade 5 events	6151	7192	7179	20046	10946
	3%	4%	4%	10%	5%
grade 6 events	3228	3527	4410	46945	14806
	2%	2%	2%	23%	7%
grade 7 events	133834	131820	141205	92693	137650
	85%	85%	84%	46%	68%

2.2 Compared Parameters

Parameter	Planned	Actual	Parameter	Planned	Actual
Instrument	ACIS	ACIS	Obspar format version number	7	7
Detector	ACIS-23678	ACIS-23678	Obspar file type	PREDICTED	ACTUAL
Grating	NONE	NONE	Obspar update status	NONE	UPDATED
Data mode	VFAINT	VFAINT	CCD I0 on	N	N
Observation mode	POINTING	POINTING	CCD I1 on	N	N
[deg] Pointing RA	90.504636	90.49716706871455	CCD I2 on	O1	Y
[deg] Pointing Dec	16.490917	16.51742025567729	CCD I3 on	Y	Y
[deg] Pointing Roll	74.158446	74.31720767317816	CCD S0 on	N	N
[mm] SIM focus pos	-0.684267	-0.6828225247311905	CCD S1 on	N	N
[mm] SIM defocus	0	0.001444936568705701	CCD S2 on	Y	Y
[mm] SIM translation stage pos	-190.132523	-190.1400660498719	CCD S3 on	Y	Y
[mm] SIM translation stage offset	0	0.00754346686406393	CCD S4 on	Y	Y
[s] Observation start time (MET)	659891742.184000	659890479.59535	CCD S5 on	N	N
Observation start date	2018-11-29T15:14:33	2018-11-29T14:54:39	Number of optional ACIS chips dropped	0	0
[s] Observation end time (MET)	659911742.184000	659912720.55918	On-chip summing requested	N	N
Observation end date	2018-11-29T20:47:53	2018-11-29T21:05:20	Subarray requested	NONE	NONE
Read mode	TIMED	TIMED	Alternating exposures requested	N	N
			[s] Primary exposure time	0.000000	3.1

2.3 Aspect





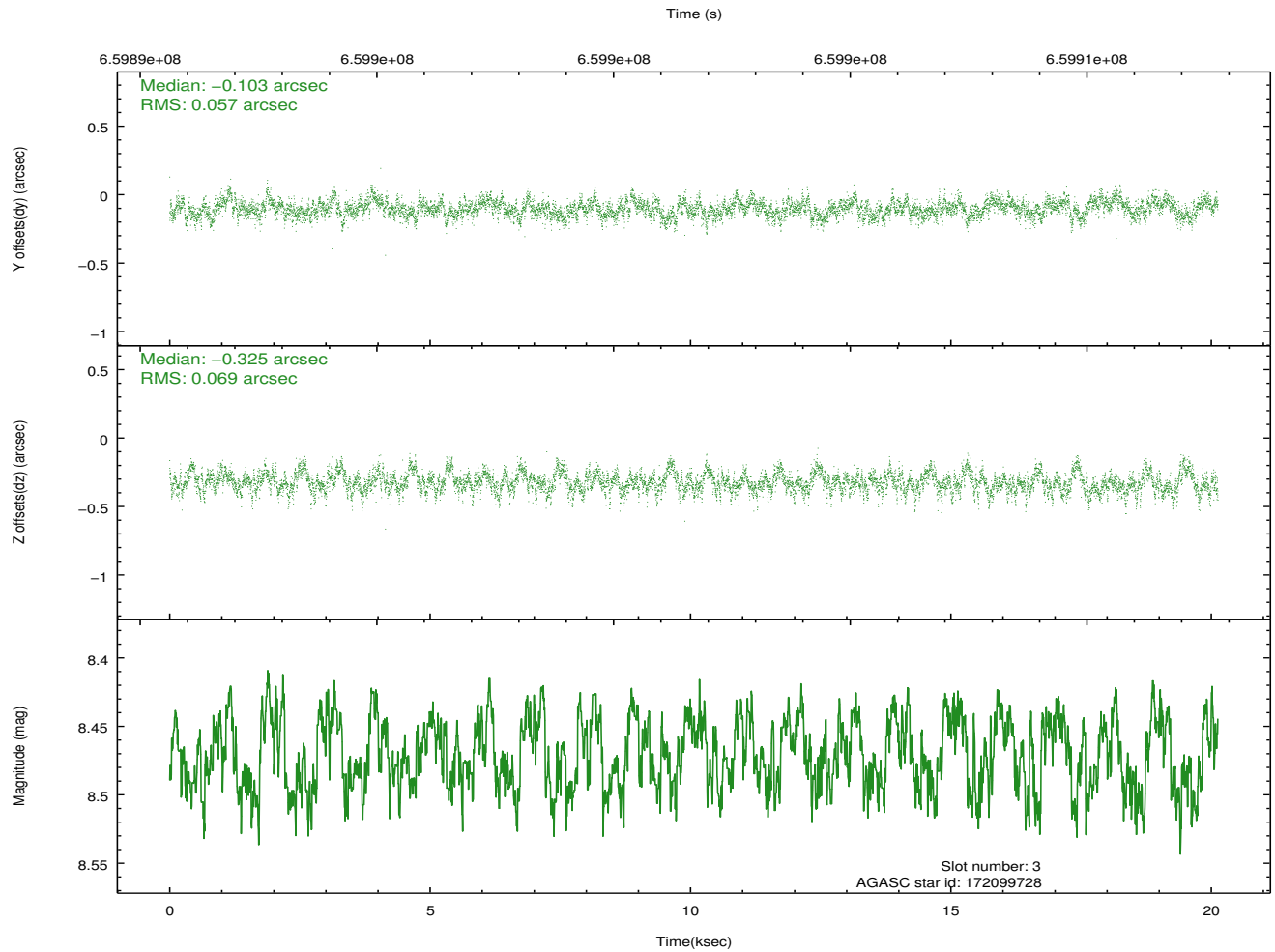
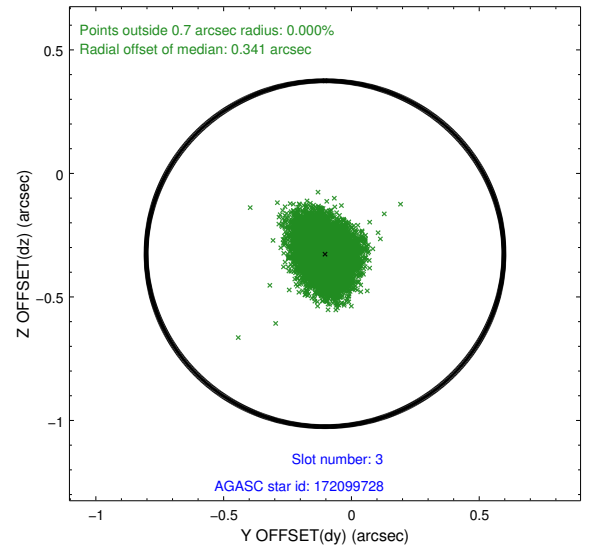
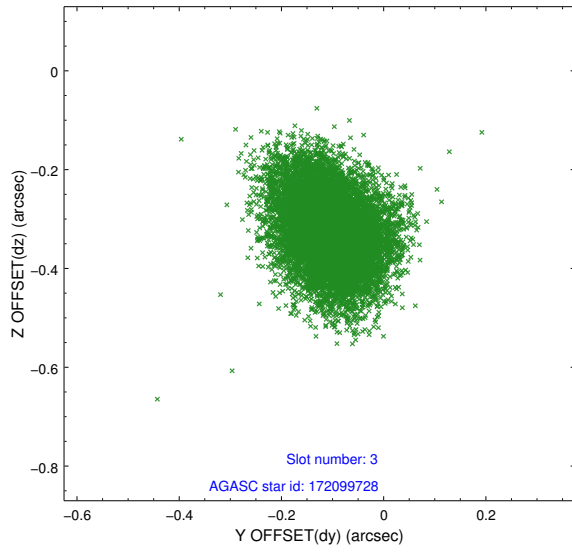
Slot Statistics

slot	status	used	id	mag	n_pts	frac_pts	med_dy	med_dz	dr1	dr2	ra	dec	mean_y	mean_x
0	FID		ACIS-S-2	7.02	4910	1.000	-0.275	-0.180	0.013	0.024	0.000000	0.000000	-763.52	-1739
1	FID		ACIS-S-4	7.15	4910	1.000	0.676	0.180	0.007	0.011	0.000000	0.000000	2150.59	169
2	FID		ACIS-S-5	7.13	4910	1.000	-0.432	0.009	0.012	0.021	0.000000	0.000000	-1816.32	163
3	GUIDE	used	172099728	8.47	9815	1.000	-0.103	-0.325	0.094	0.156	90.195420	16.822602	858.79	1350
4	GUIDE	used	172102392	8.30	9809	1.000	0.174	0.304	0.129	0.214	91.212288	16.659808	1256.44	-2180
5	GUIDE	used	172626096	7.08	9819	1.000	-0.211	-0.289	0.087	0.141	90.415530	16.934136	1451.46	730
6	GUIDE	used	172097552	8.93	9808	1.000	0.141	0.227	0.129	0.209	90.046355	16.286628	-1137.61	1323
7	GUIDE	used	172100808	8.67	9805	1.000	0.002	0.075	0.129	0.204	90.955856	16.731979	1261.73	-1258

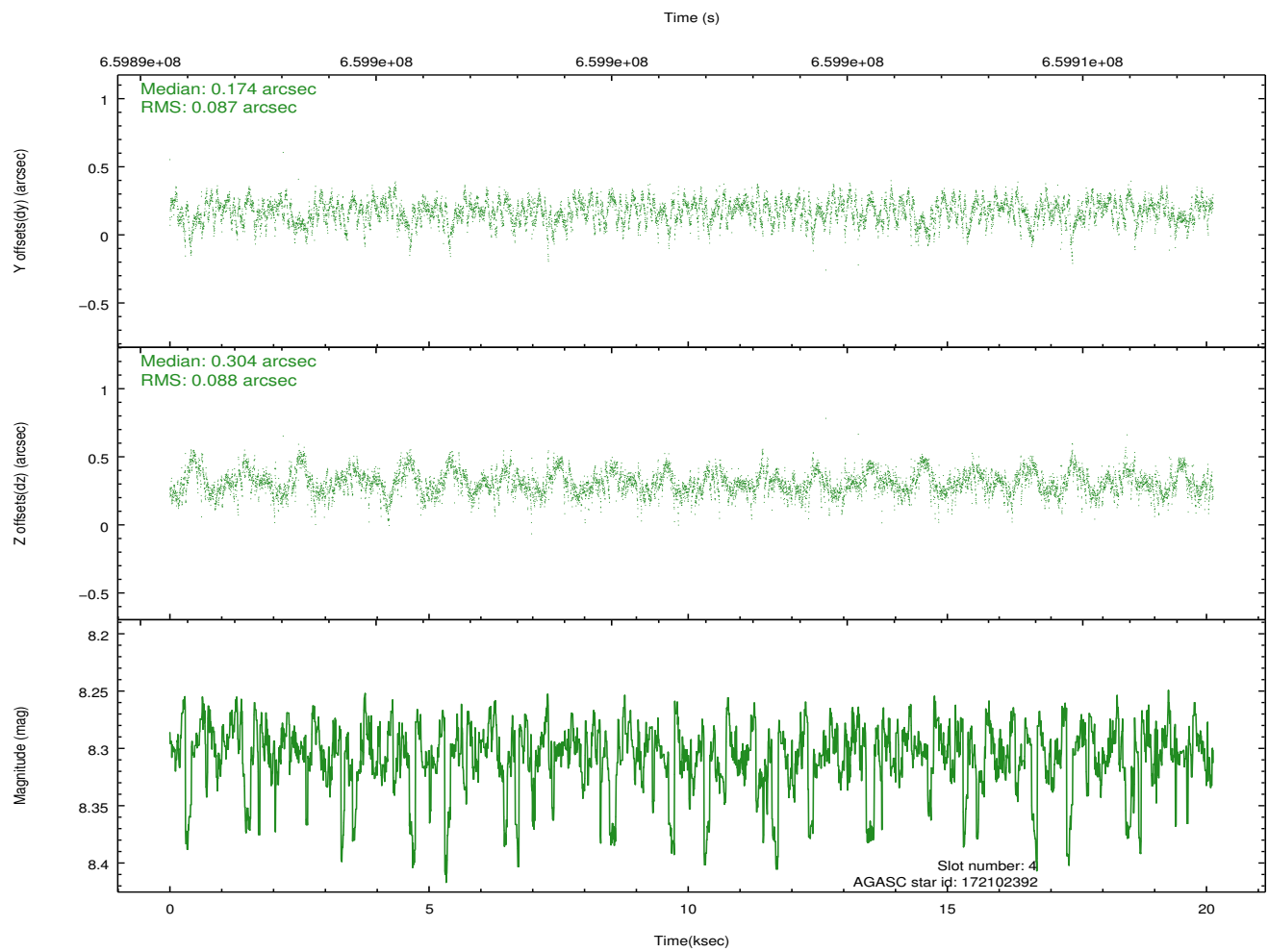
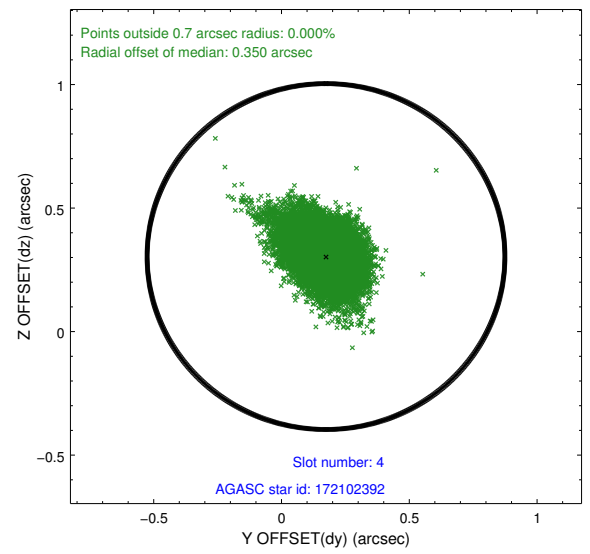
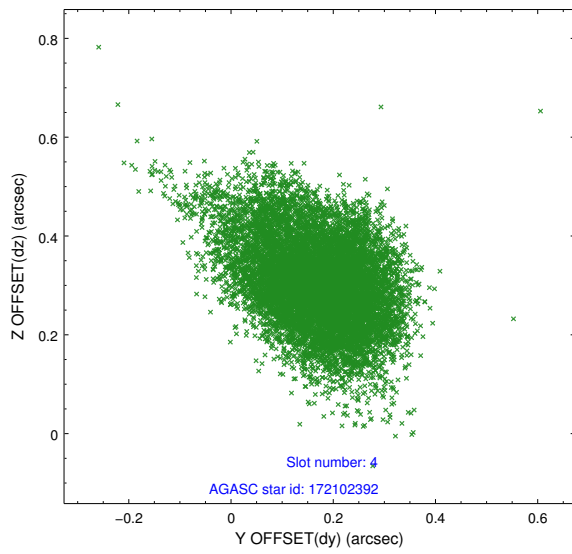
∞

2.4 Star Slots

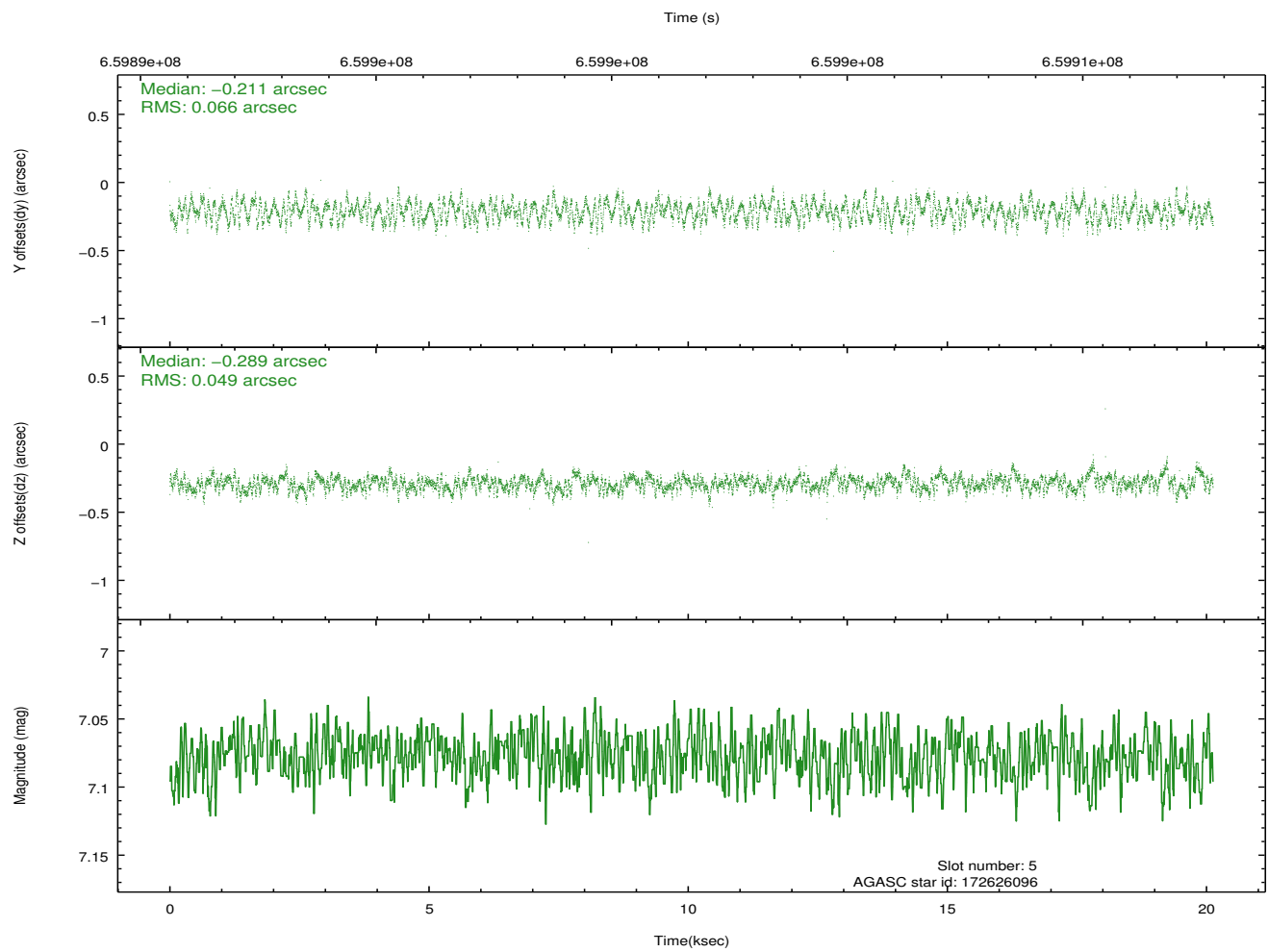
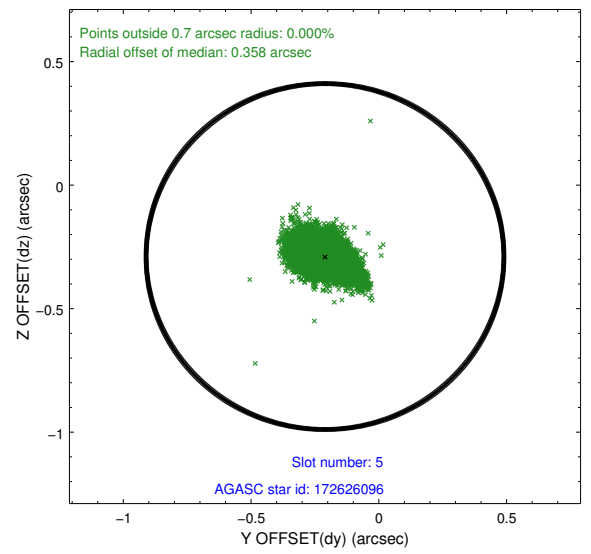
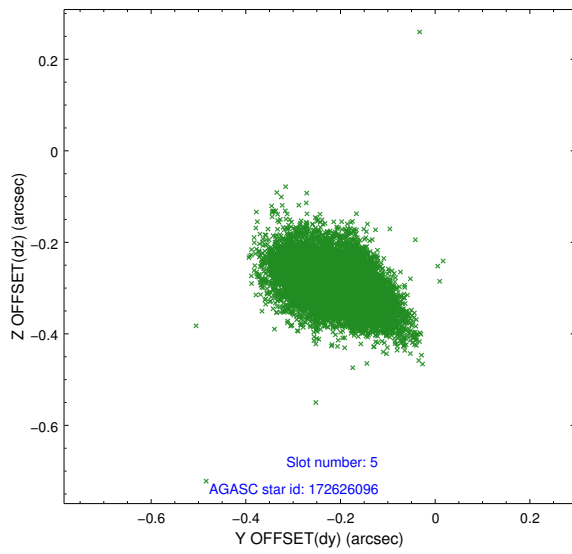
2.4.1 Slot 3



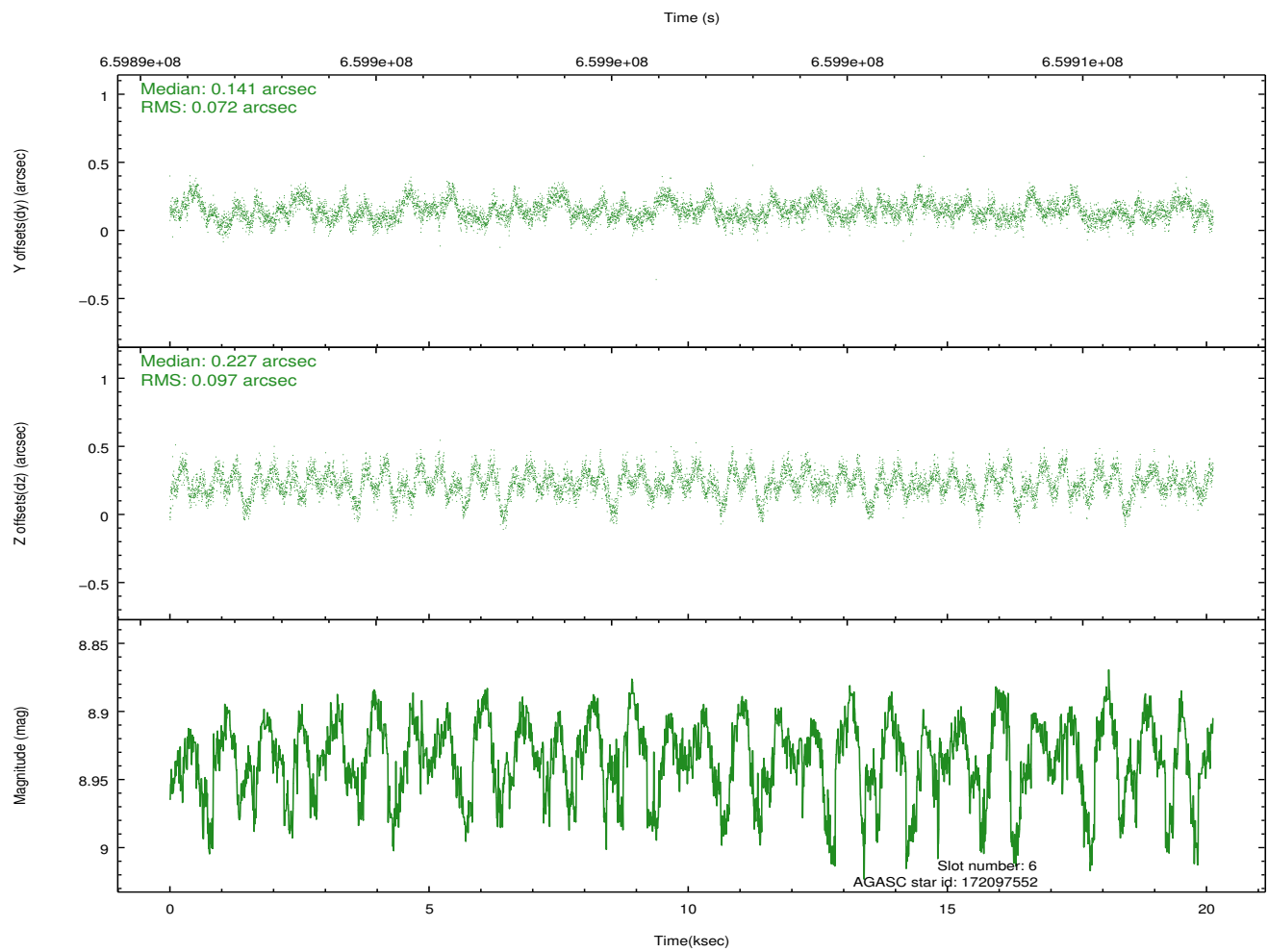
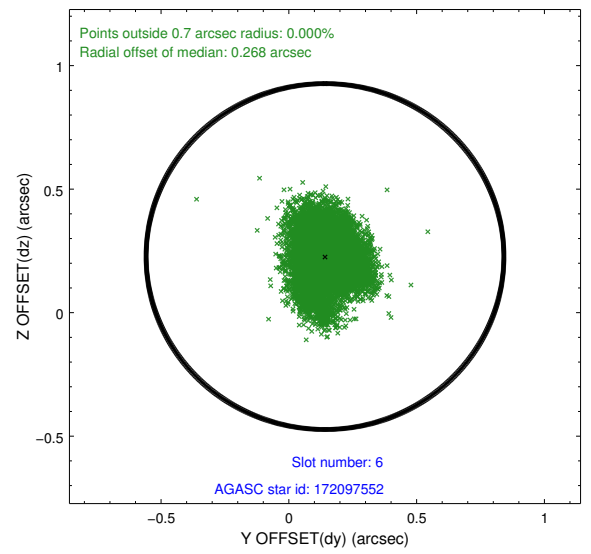
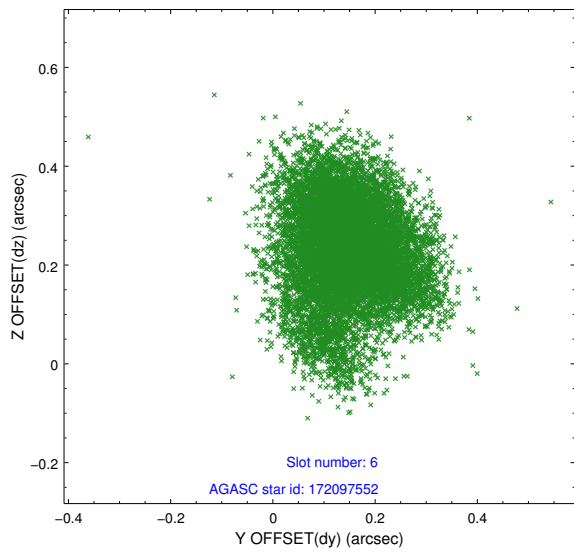
2.4.2 Slot 4



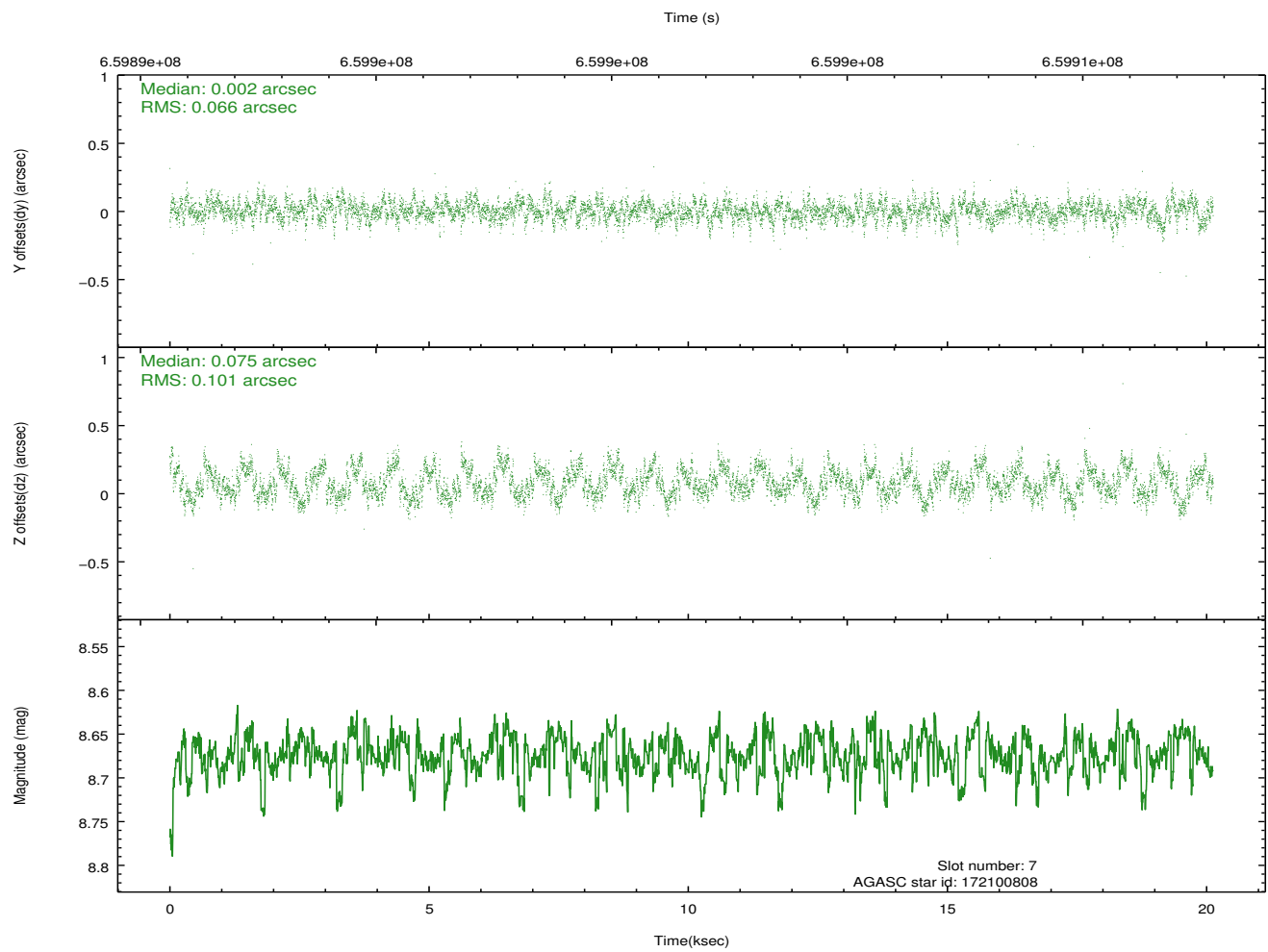
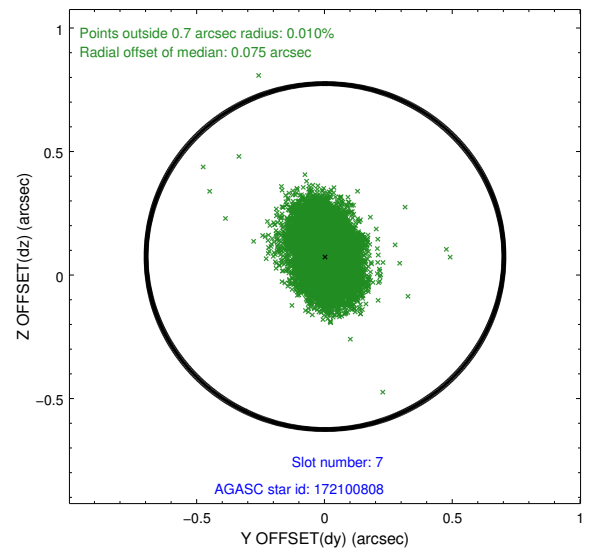
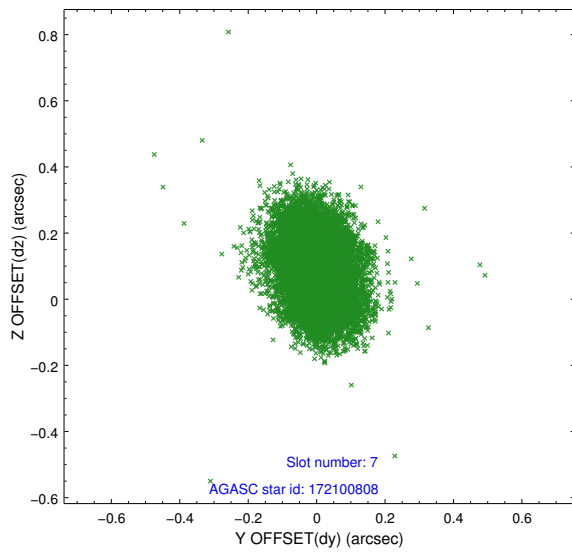
2.4.3 Slot 5



2.4.4 Slot 6

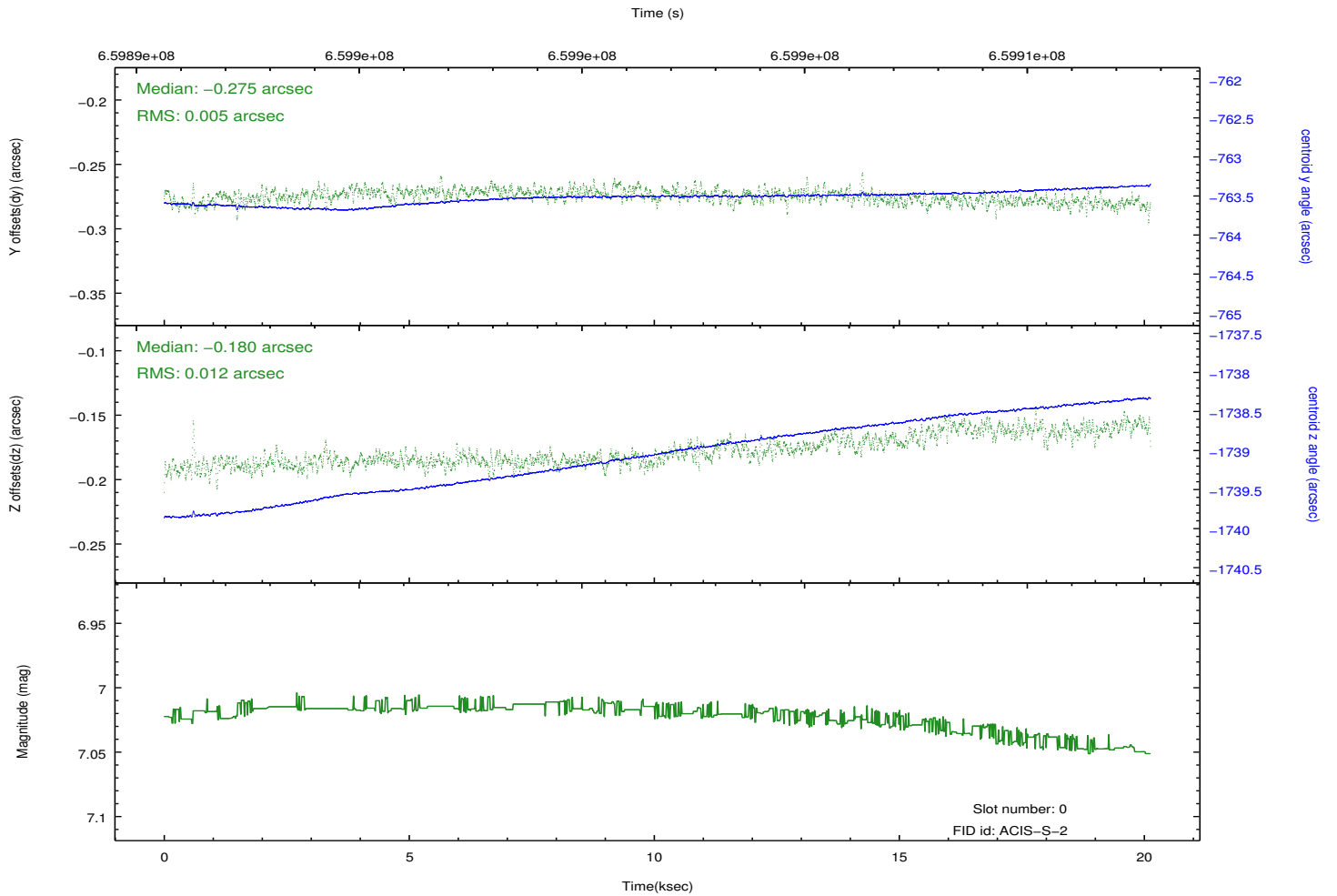
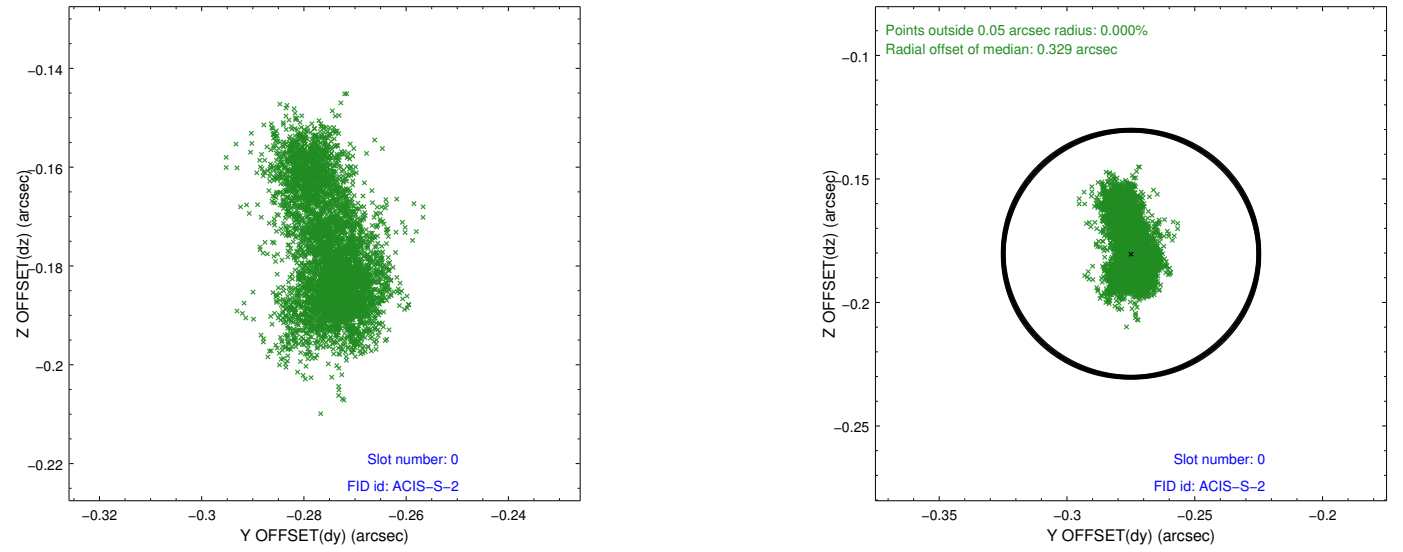


2.4.5 Slot 7

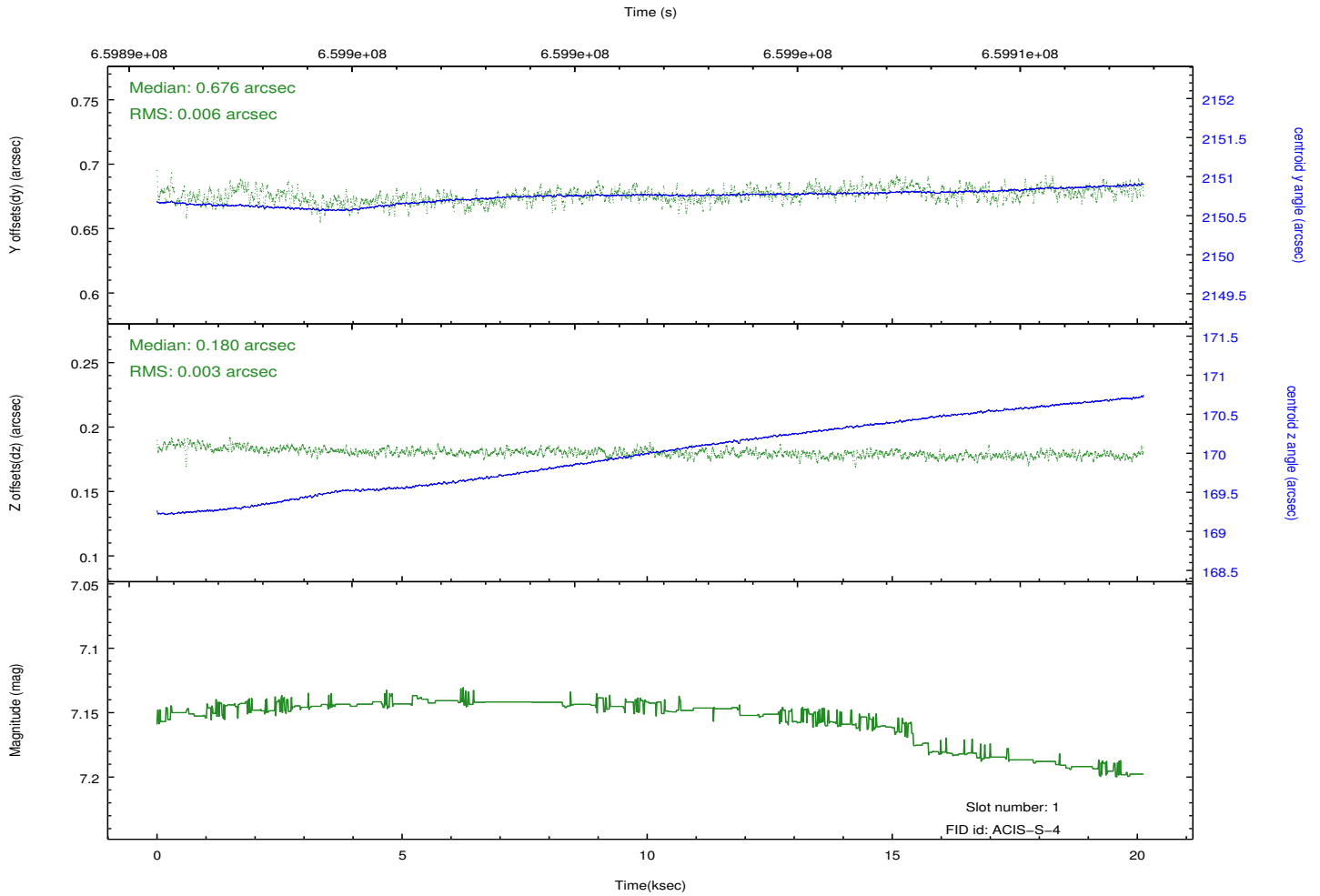
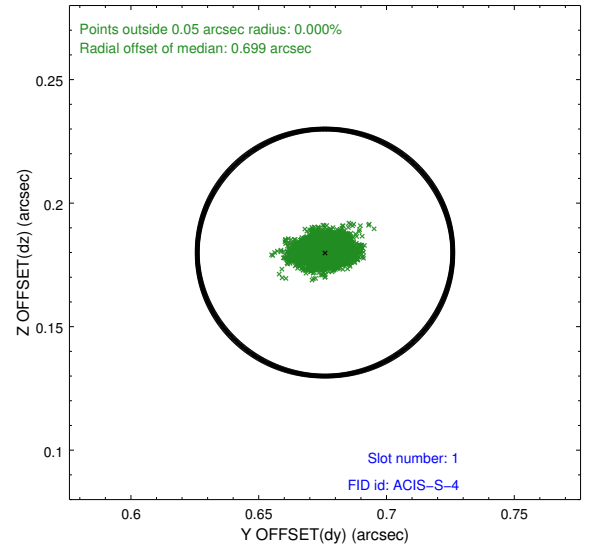
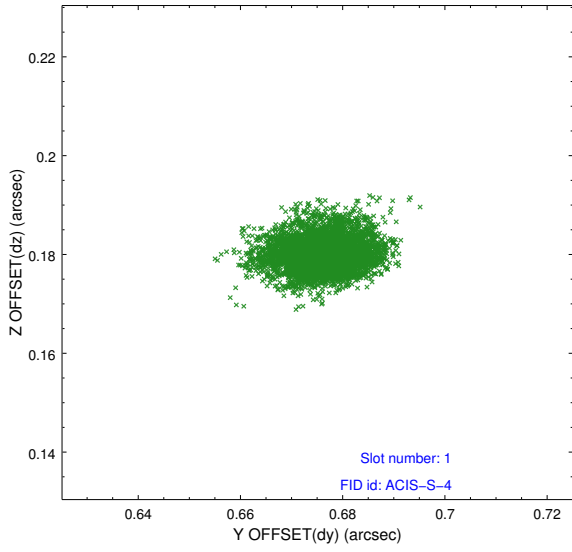


2.5 FID Slots

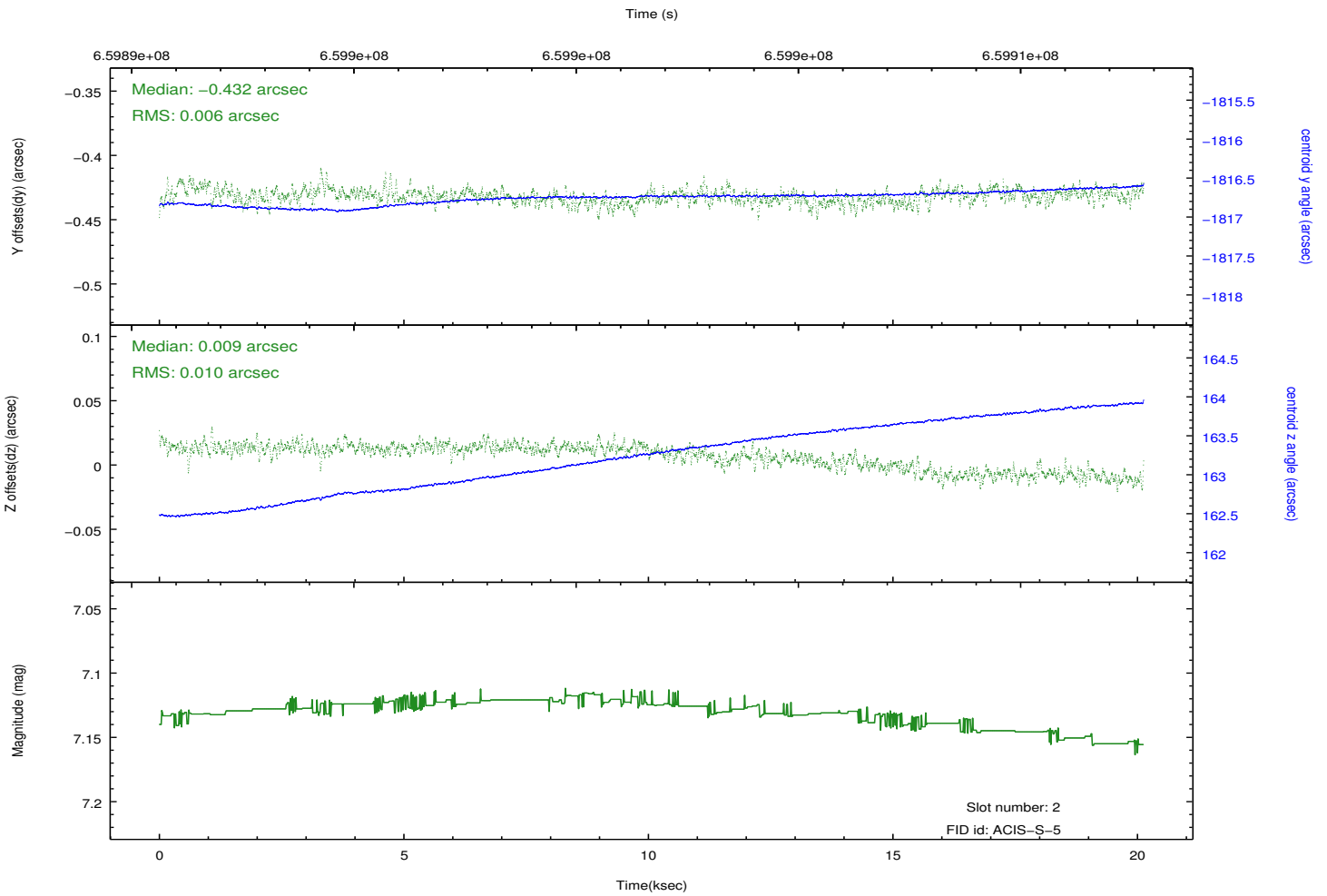
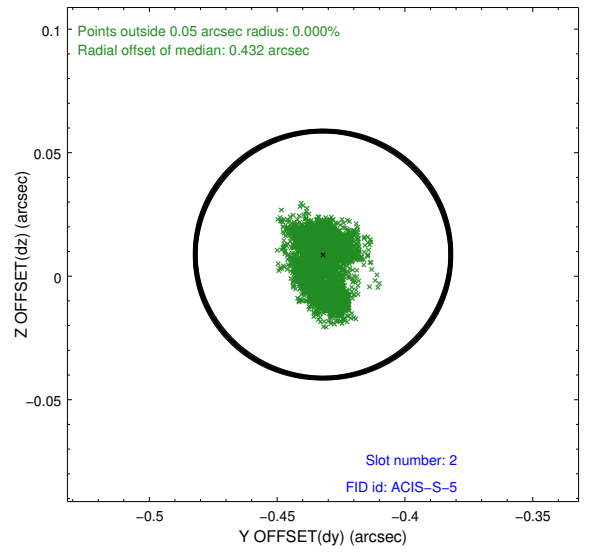
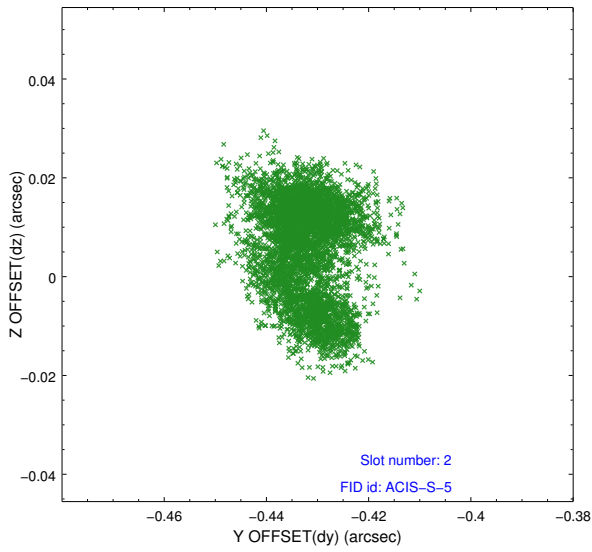
2.5.1 Slot 0



2.5.2 Slot 1



2.5.3 Slot 2



A Summary

A.1 Status

V&V Scientist	Joy Nichols
V&V Date (YYYY-MM-DD)	2018.11.30
V&V Edition	1
V&V Disposition and Status	OK
V&V Charge Time	20.053900154352

A.2 Comments