

V&V Reference Report

L2 ASCDS Version : 10.7

Observation 21971 - L2 Version 1
Chandra X-Ray Center

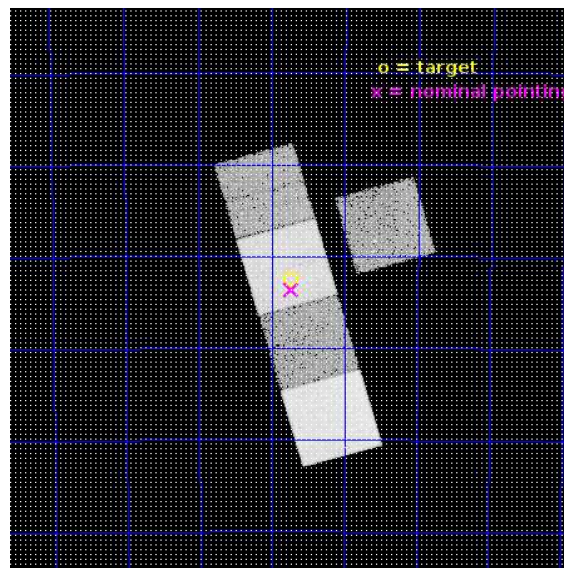
L2 Processing Date : Dec 1 2018

Contents

1	Front	2
2	OBI	3
2.1	OBI	3
2.1.1	Images	3
2.1.2	Bias	3
2.1.3	Parameters	4
2.1.4	Events	4
2.2	Compared Parameters	5
2.3	Aspect	6
2.4	Star Slots	9
2.4.1	Slot 3	9
2.4.2	Slot 4	10
2.4.3	Slot 5	11
2.4.4	Slot 6	12
2.4.5	Slot 7	13
2.5	FID Slots	14
2.5.1	Slot 0	14
2.5.2	Slot 1	15
2.5.3	Slot 2	16
A	Summary	17
A.1	Status	17
A.2	Comments	17

1 Front

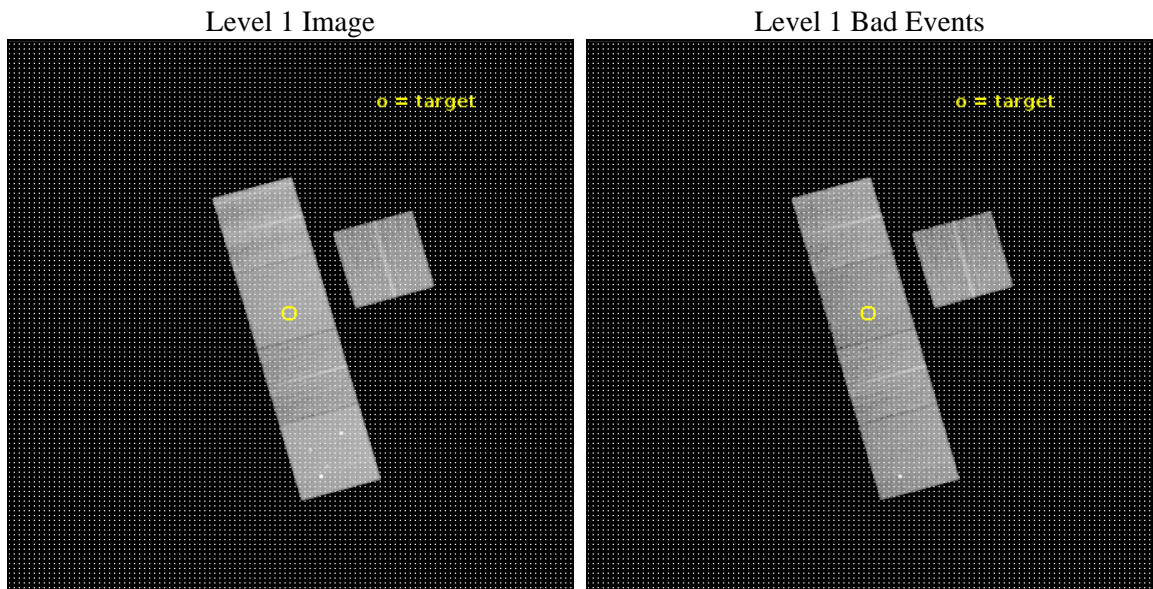
seq_num	201228	Sequence number
obs_id	21971	Observation id
title	THE MYSTERIOUS EXTENDED X-RAY EMISSION TOWARDS THE AGB STAR, NU Pav	
observer	Raghvendra Sahai	Principal investigator
object	NU Pav	Source name
dtycycle	0	
cycle	P	events from which exps? Prim/Second/Both
ra_targ	300.43625	Observer's specified target RA [deg]
dec_targ	-59.375889	Observer's specified target Dec [deg]
ra_nom	300.4325971089	Nominal RA [deg]
dec_nom	-59.394030783938	Nominal Dec [deg]
roll_nom	254.1534744194	Nominal Roll [deg]
revision	1	Processing version of data
ontime	18051.30013895	Sum of GTIs [s]
livetime	17815.446613461	Livetime [s]
ontime3	18051.30013895	Sum of GTIs [s]
ontime5	18051.30013895	Sum of GTIs [s]
ontime6	18051.30013895	Sum of GTIs [s]
ontime7	18051.30013895	Sum of GTIs [s]
ontime8	18051.26558423	Sum of GTIs [s]
l2events	225641	Number of level 2 events



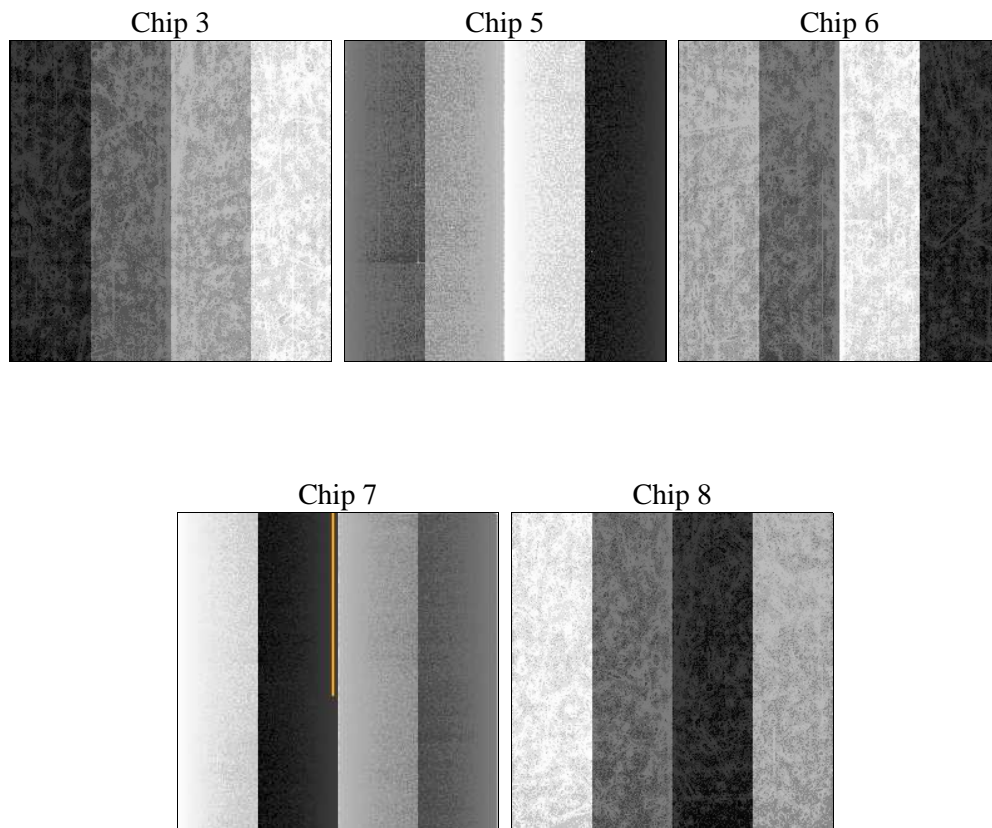
2 OBI

2.1 OBI

2.1.1 Images



2.1.2 Bias



2.1.3 Parameters

obi_num	0	Obi number	sched_exp_time	18000.000000	[s] Scheduled observation exposure time
ascdsver	10.7	Processing system revision	ontime	18051.30013895	Sum of GTIs [s]
caldbver	4.8.0.1	 	ontime3	18051.30013895	Sum of GTIs [s]
date	2018-12-01T18:07:18	Date and time of file creation	ontime5	18051.30013895	Sum of GTIs [s]
revision	1	Processing version of data	ontime6	18051.30013895	Sum of GTIs [s]
			ontime7	18051.30013895	Sum of GTIs [s]
			ontime8	18051.26558423	Sum of GTIs [s]
			l1events	871578	Number of level 1 events

2.1.4 Events

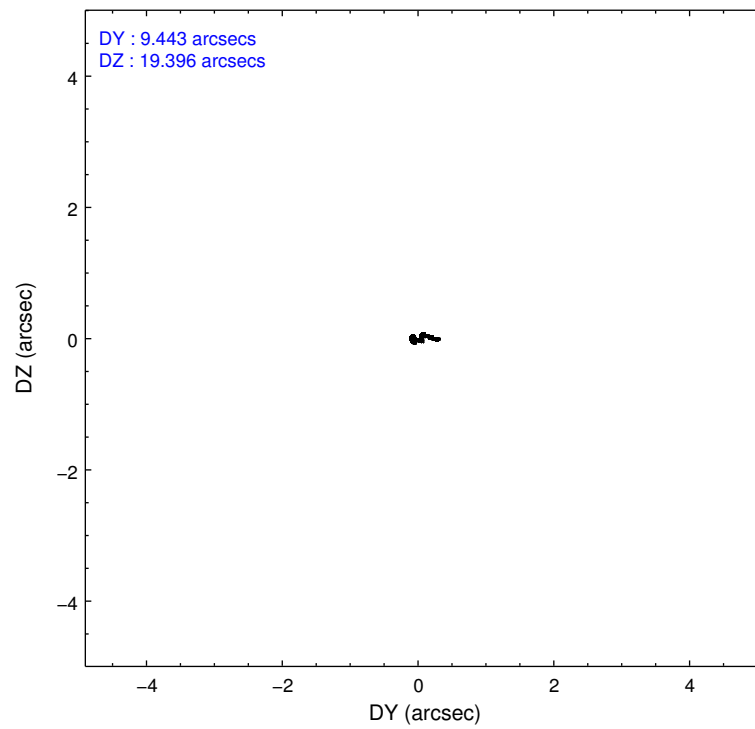
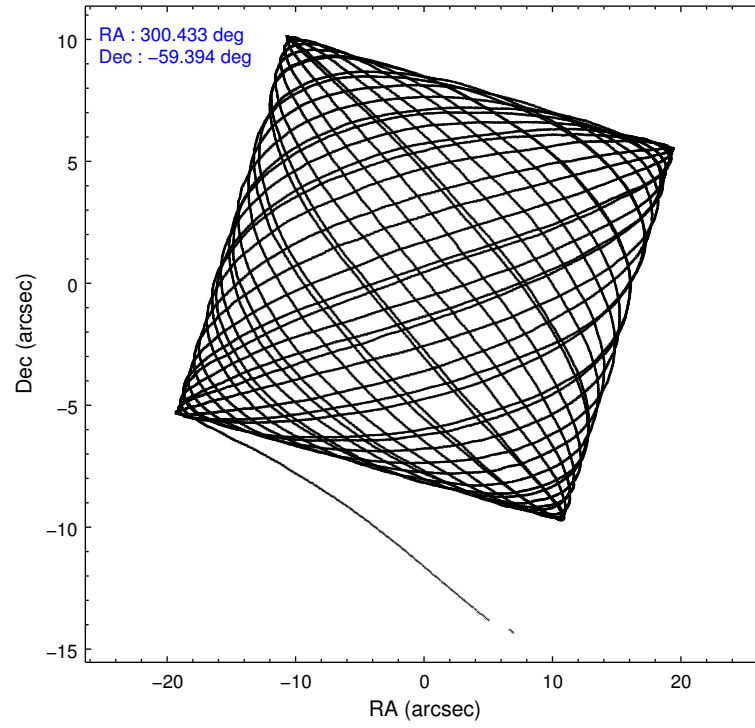
	ccd 3	ccd 5	ccd 6	ccd 7	ccd 8
level 1 events	131294	232727	142038	180325	185194
rejected events	116183	119149	126168	101222	132937
rejected %	88%	51%	88%	56%	71%

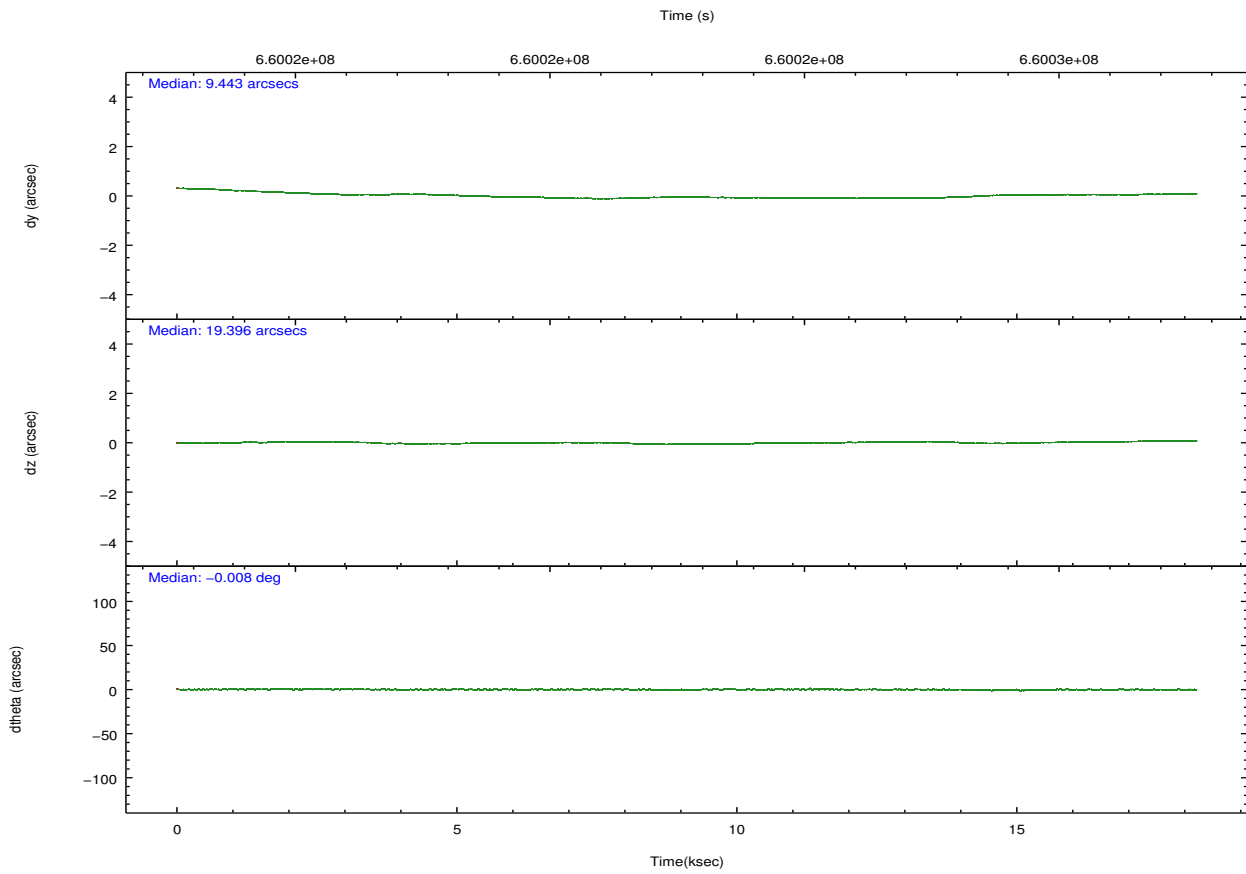
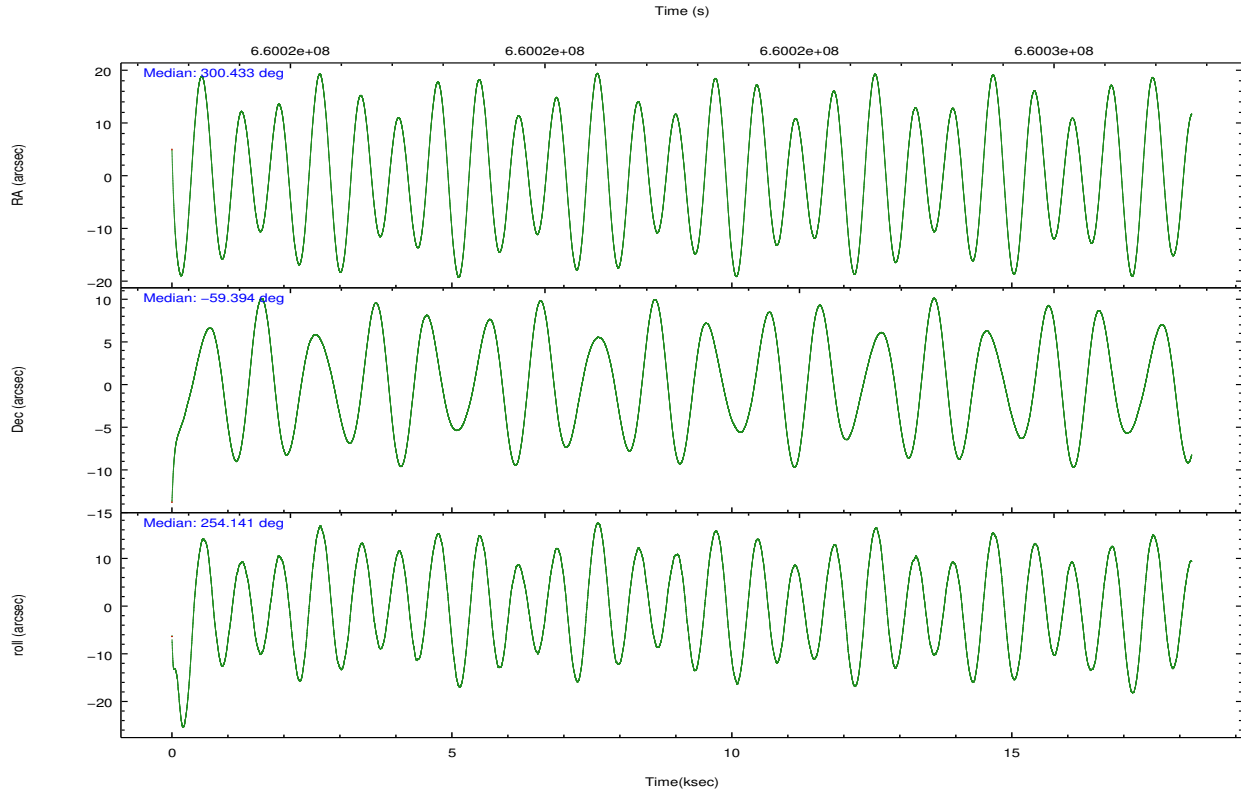
	ccd 3	ccd 5	ccd 6	ccd 7	ccd 8
grade 0 events	5780	12251	5313	6861	14986
	4%	5%	3%	3%	8%
grade 1 events	85	515	90	264	154
	0%	0%	0%	0%	0%
grade 2 events	3232	35859	3806	17110	12814
	2%	15%	2%	9%	6%
grade 3 events	1524	3417	1496	6349	5187
	1%	1%	1%	3%	2%
grade 4 events	1603	3380	1609	6150	4779
	1%	1%	1%	3%	2%
grade 5 events	6567	16228	6517	17754	9857
	5%	6%	4%	9%	5%
grade 6 events	2981	58720	3652	42651	14502
	2%	25%	2%	23%	7%
grade 7 events	109522	102357	119555	83186	122915
	83%	43%	84%	46%	66%

2.2 Compared Parameters

Parameter	Planned	Actual	Parameter	Planned	Actual
Instrument	ACIS	ACIS	Obspar format version number	7	7
Detector	ACIS-35678	ACIS-35678	Obspar file type	PREDICTED	ACTUAL
Grating	NONE	NONE	Obspar update status	NONE	UPDATED
Data mode	FAINT	FAINT	CCD I0 on	N	N
Observation mode	POINTING	POINTING	CCD I1 on	N	N
[deg] Pointing RA	300.418769	300.4325971088995	CCD I2 on	O1	N
[deg] Pointing Dec	-59.367487	-59.39403078393838	CCD I3 on	O2	Y
[deg] Pointing Roll	253.984953	254.1534744194024	CCD S0 on	N	N
[mm] SIM focus pos	-0.684267	-0.6828225247311905	CCD S1 on	Y	Y
[mm] SIM defocus	0	0.001444936568705701	CCD S2 on	Y	Y
[mm] SIM translation stage pos	-190.132523	-190.1425803651734	CCD S3 on	Y	Y
[mm] SIM translation stage offset	0	0.01005778216563158	CCD S4 on	Y	Y
[s] Observation start time (MET)	660013772.184000	660012808.22764	CCD S5 on	N	N
Observation start date	2018-12-01T01:08:23	2018-12-01T00:53:28	Number of optional ACIS chips dropped	1	1
[s] Observation end time (MET)	660031772.184000	660032635.3163199	On-chip summing requested	N	N
Observation end date	2018-12-01T06:08:23	2018-12-01T06:23:55	Subarray requested	NONE	NONE
Read mode	TIMED	TIMED	Alternating exposures requested	N	N
			[s] Primary exposure time	0.000000	3.1

2.3 Aspect



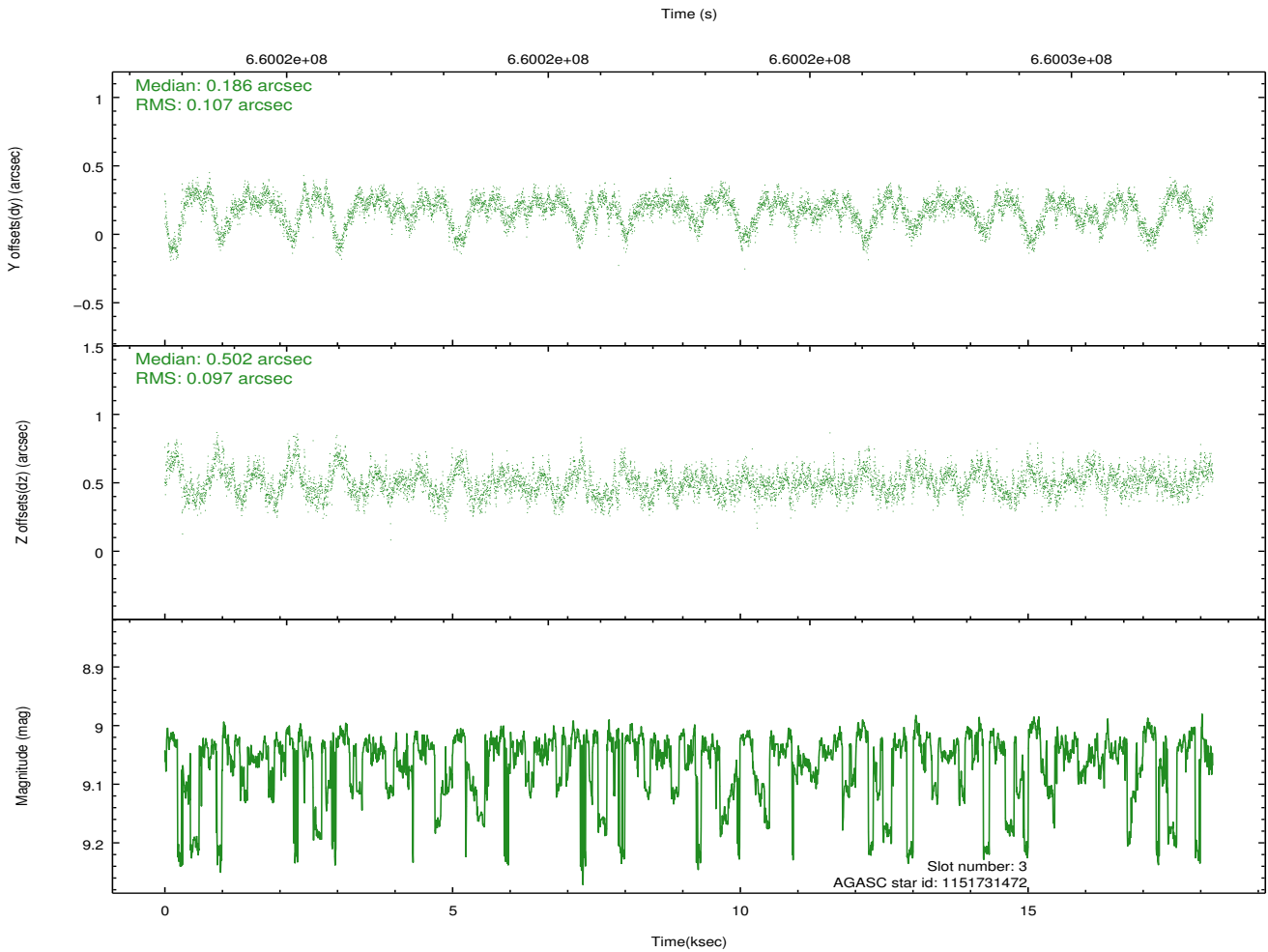
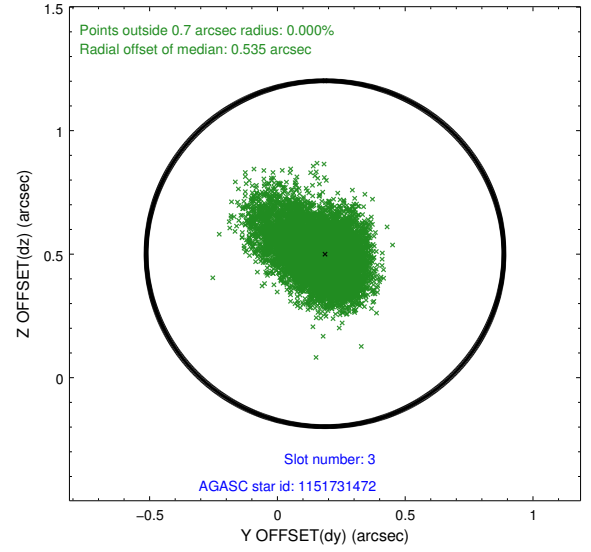
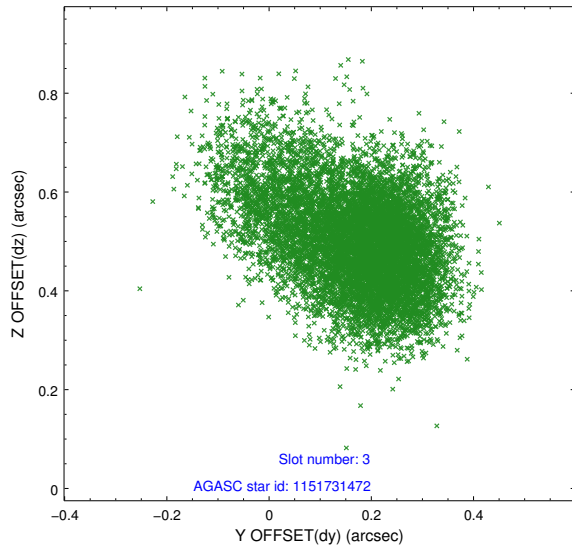


Slot Statistics

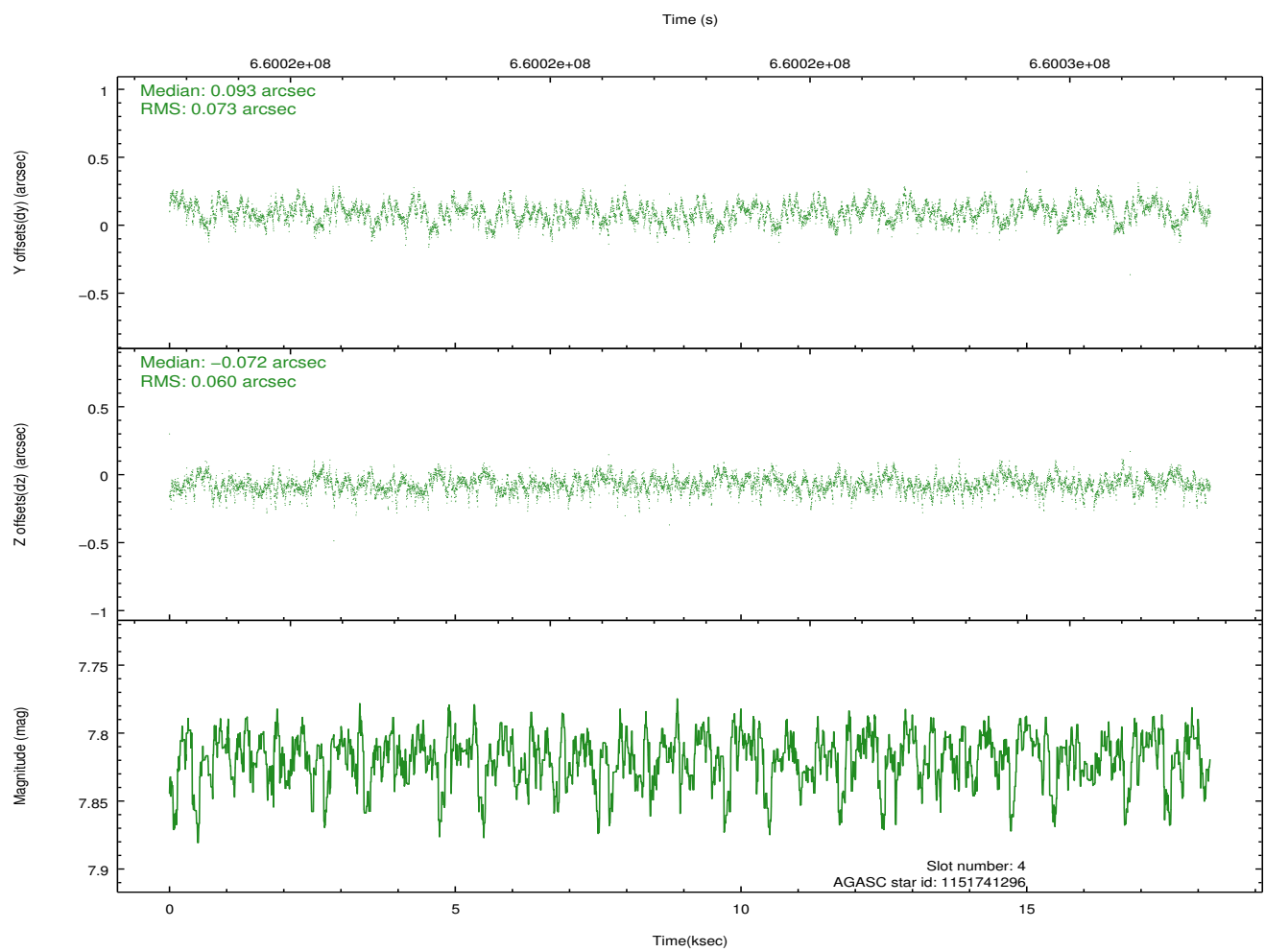
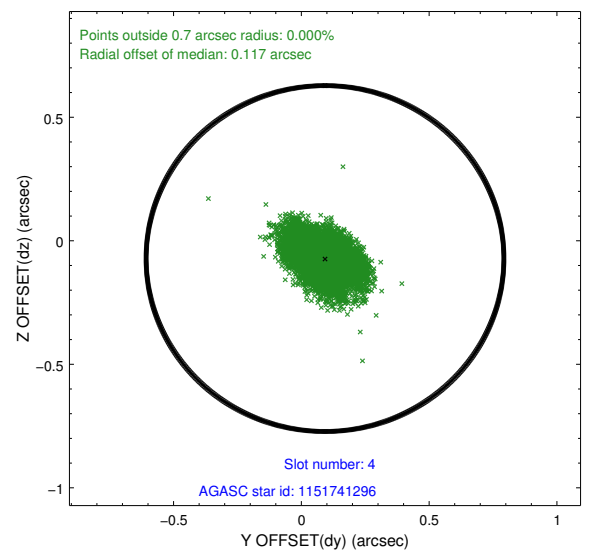
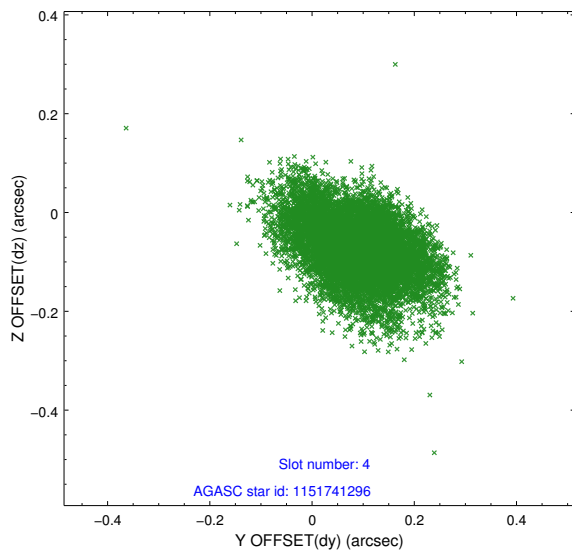
slot	status	used	id	mag	n_pts	frac_pts	med_dy	med_dz	dr1	dr2	ra	dec	mean_y	mean_x
0	FID		ACIS-S-1	7.09	4443	1.000	-0.014	-0.051	0.009	0.014	0.000000	0.000000	933.84	-1736
1	FID		ACIS-S-4	7.12	4443	1.000	0.491	0.047	0.008	0.014	0.000000	0.000000	2151.77	167
2	FID		ACIS-S-5	7.12	4443	1.000	-0.505	0.017	0.008	0.014	0.000000	0.000000	-1815.34	161
3	GUIDE	used	1151731472	9.05	8874	1.000	0.186	0.502	0.148	0.265	299.531205	-58.963273	-932.55	-1981
4	GUIDE	used	1151741296	7.82	8878	1.000	0.093	-0.072	0.099	0.166	299.460942	-59.525820	1043.10	-1519
5	GUIDE	used	1151865944	7.65	8884	1.000	-0.097	-0.279	0.088	0.142	300.481025	-59.447946	247.91	189
6	GUIDE	used	1151874456	7.77	8883	1.000	-0.198	-0.278	0.090	0.147	301.331144	-59.540587	150.61	1775
7	GUIDE	used	1151874464	8.80	8871	1.000	0.035	0.124	0.114	0.183	301.408647	-59.230918	-961.96	1621

2.4 Star Slots

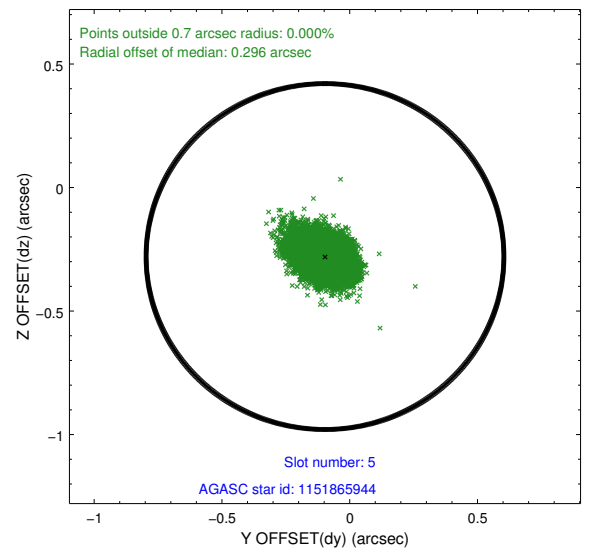
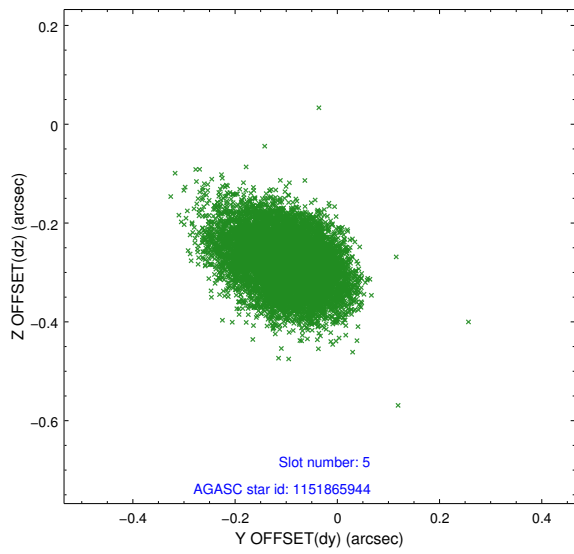
2.4.1 Slot 3



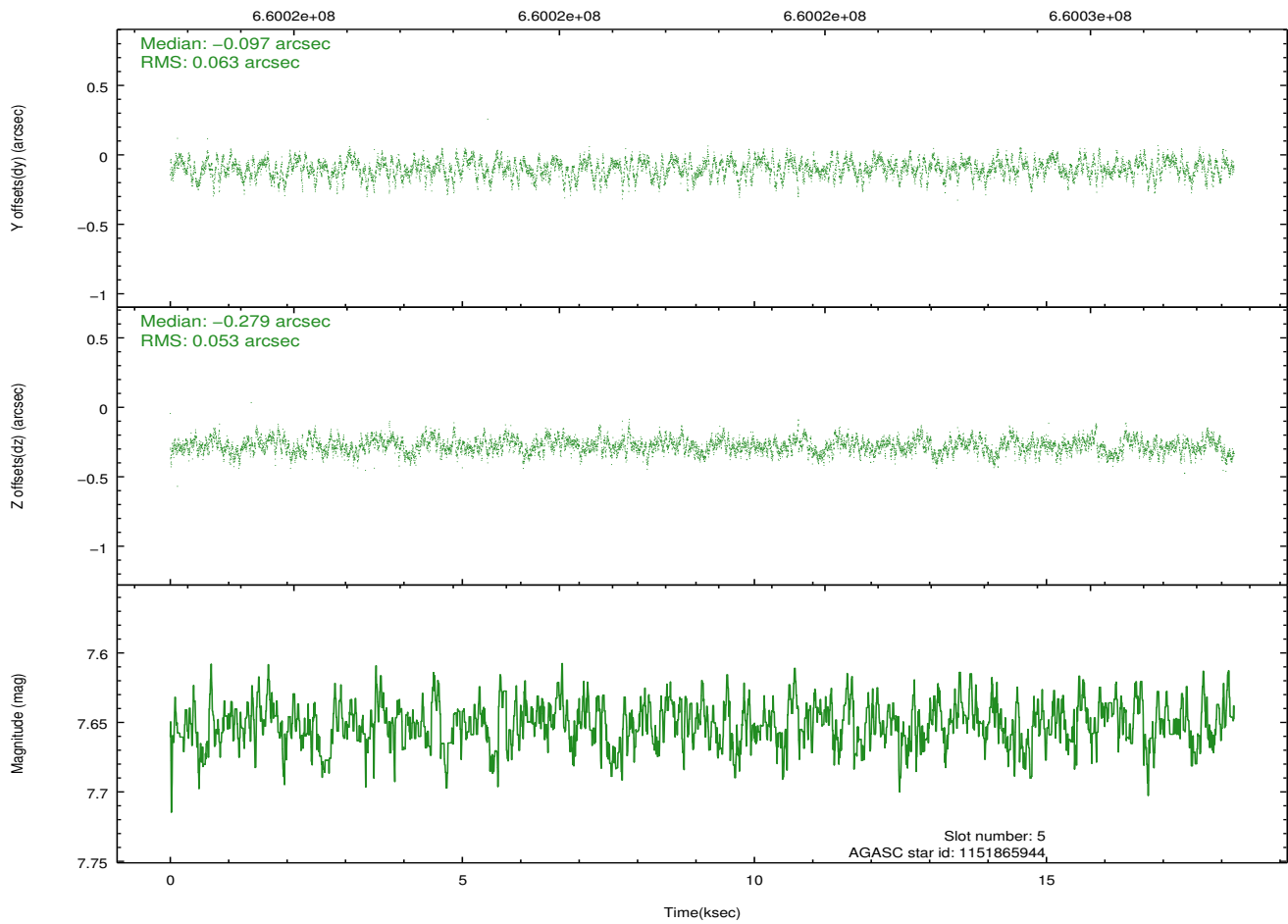
2.4.2 Slot 4



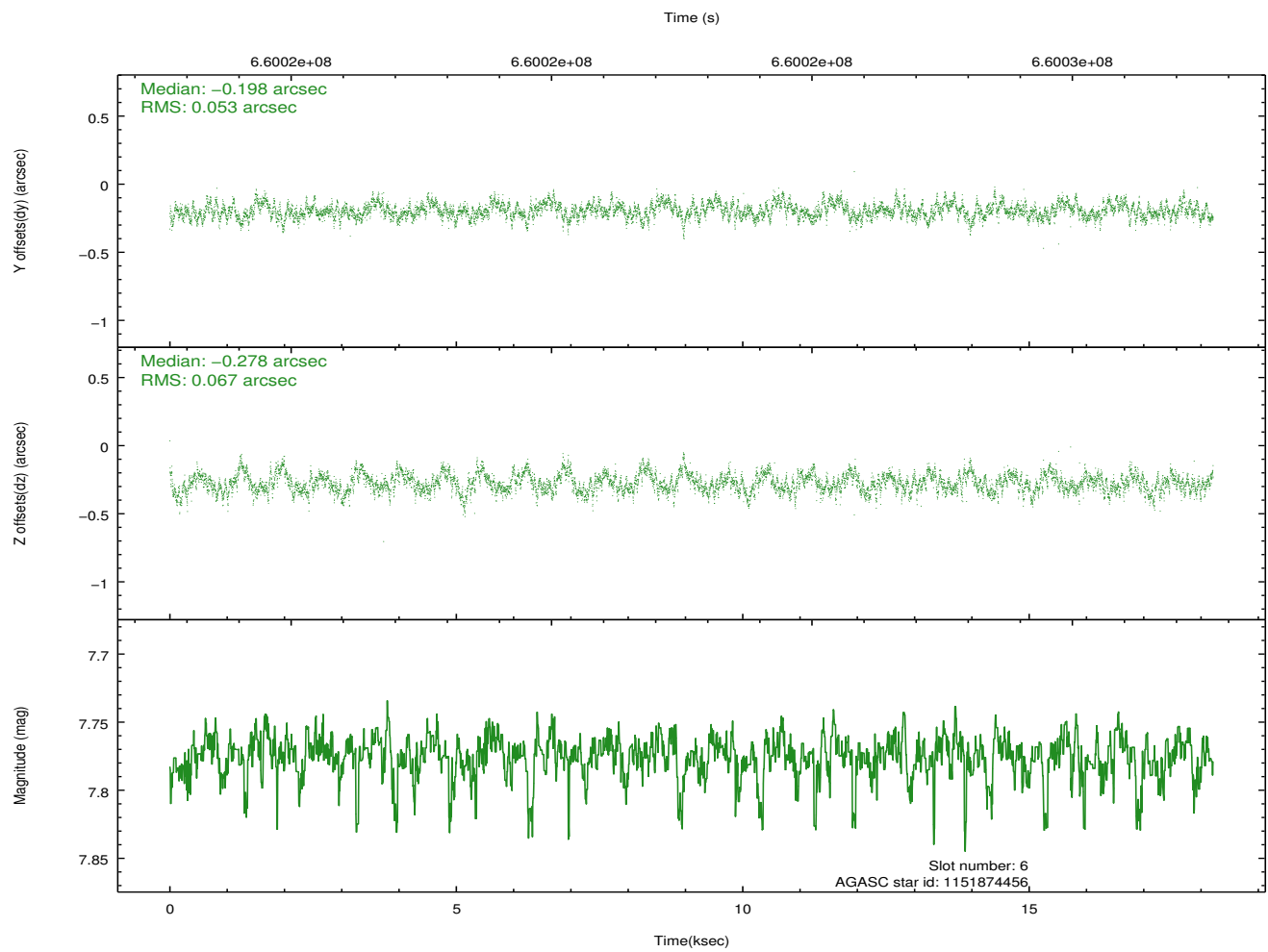
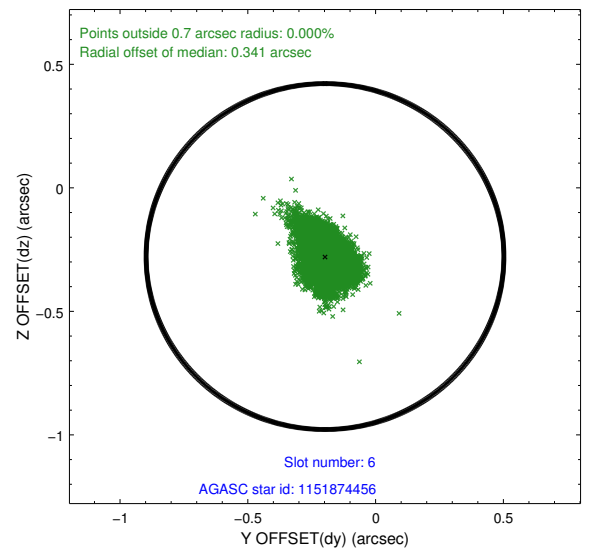
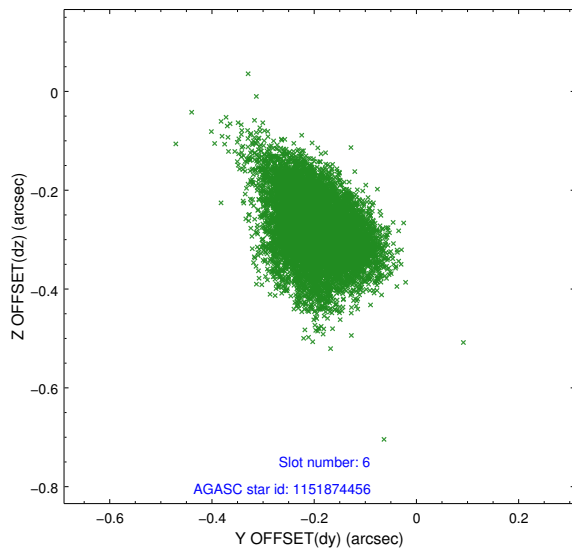
2.4.3 Slot 5



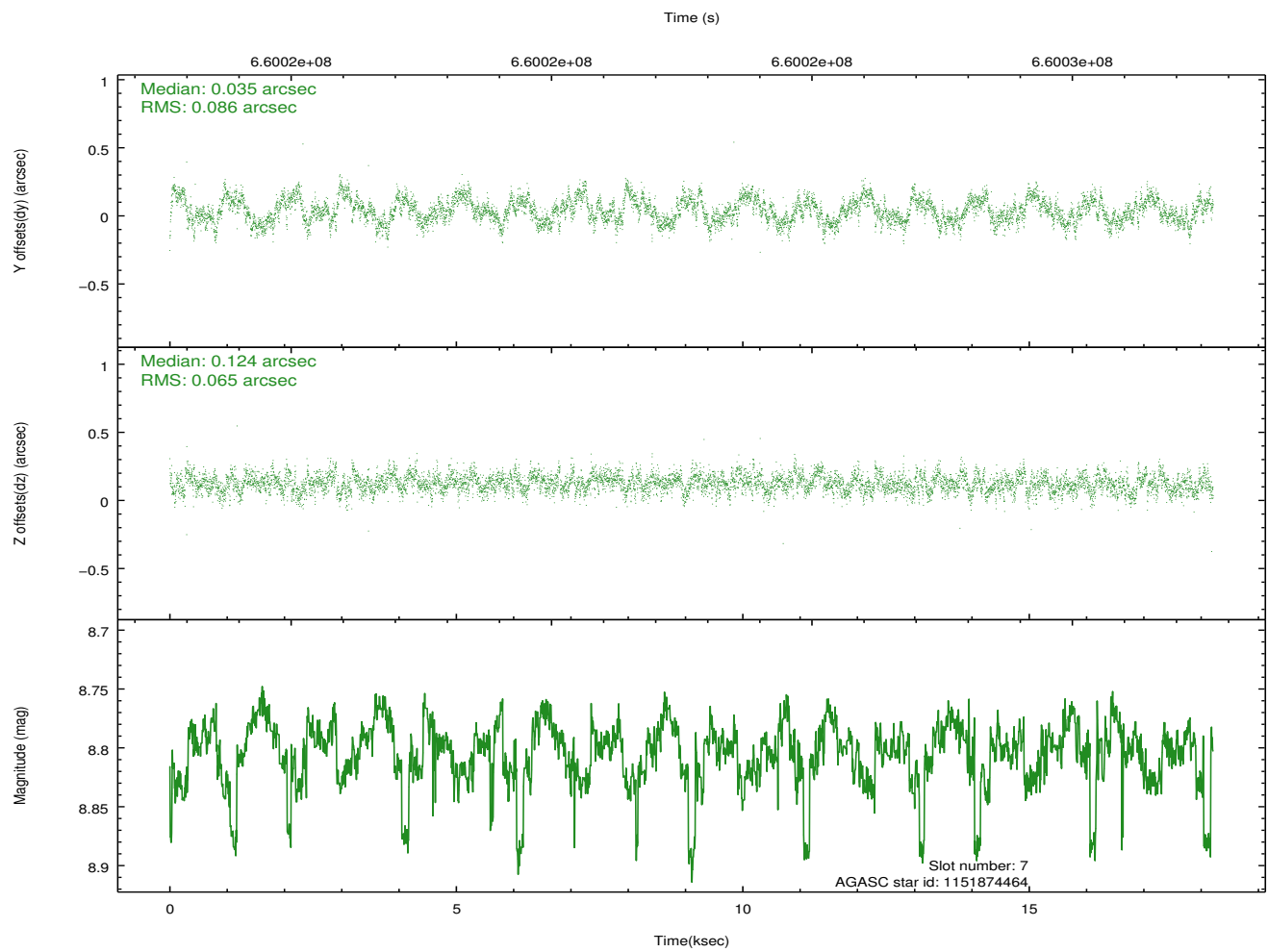
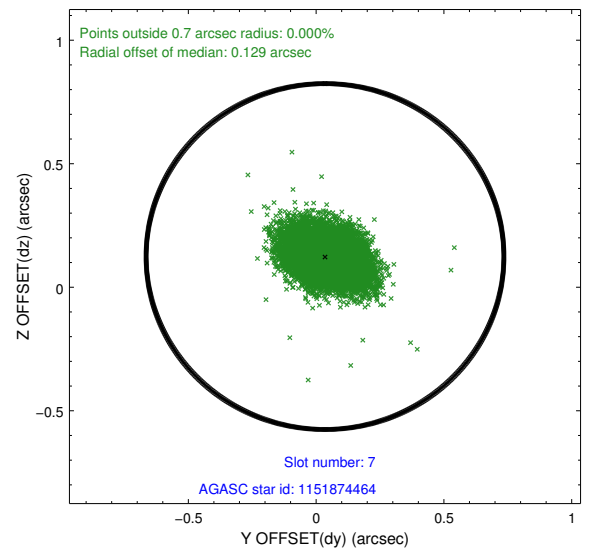
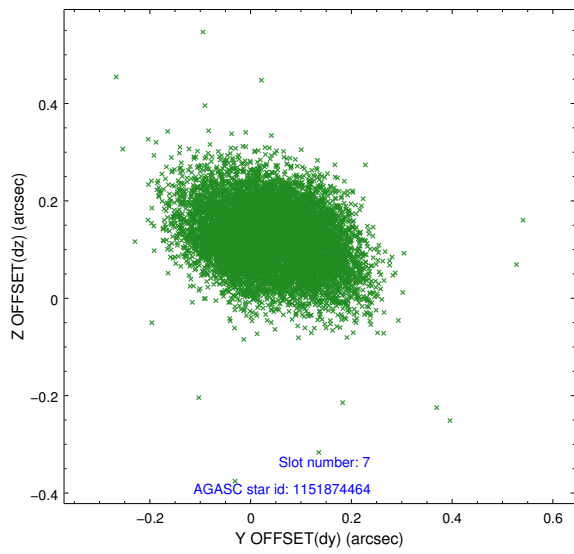
Time (s)



2.4.4 Slot 6

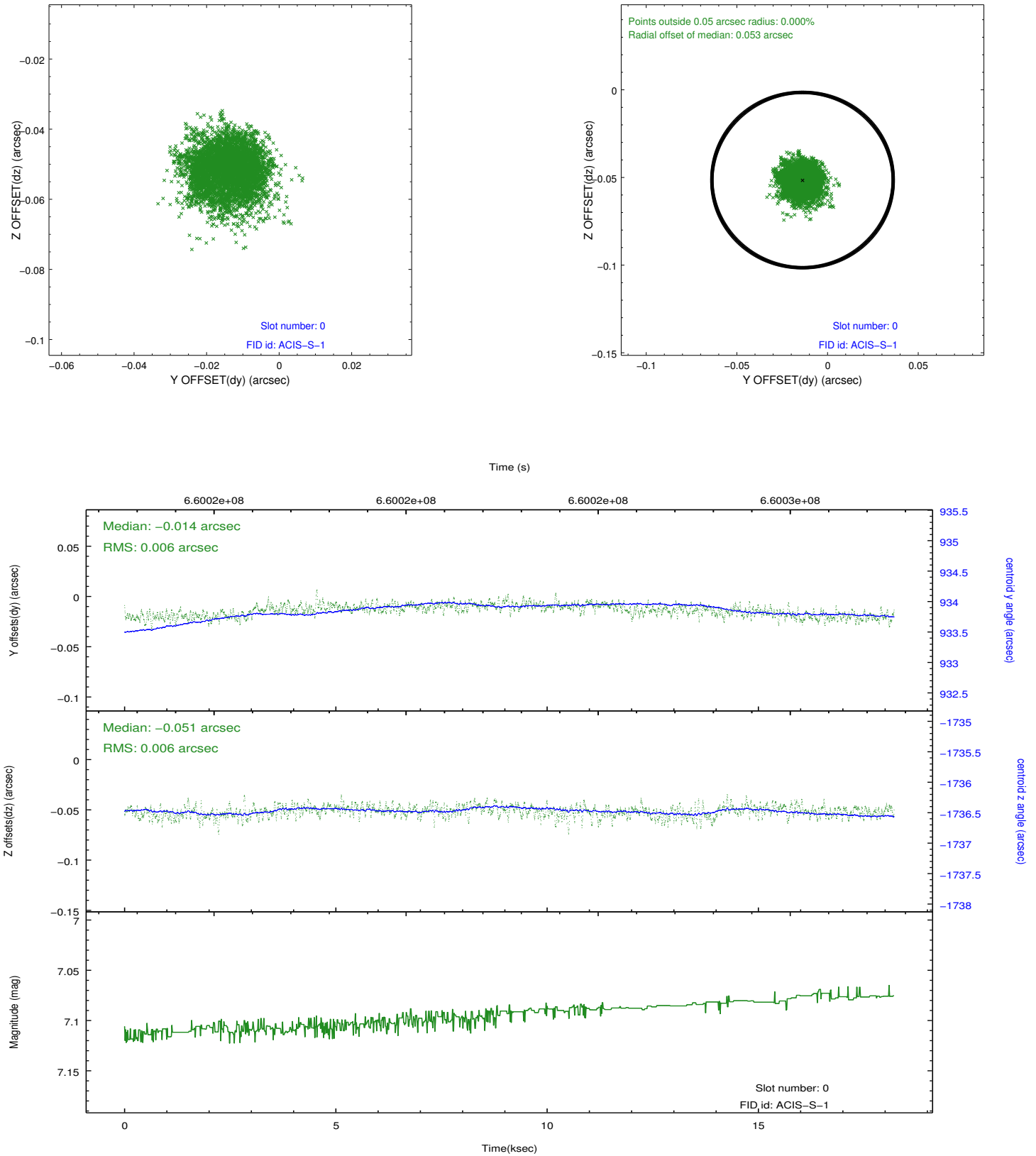


2.4.5 Slot 7

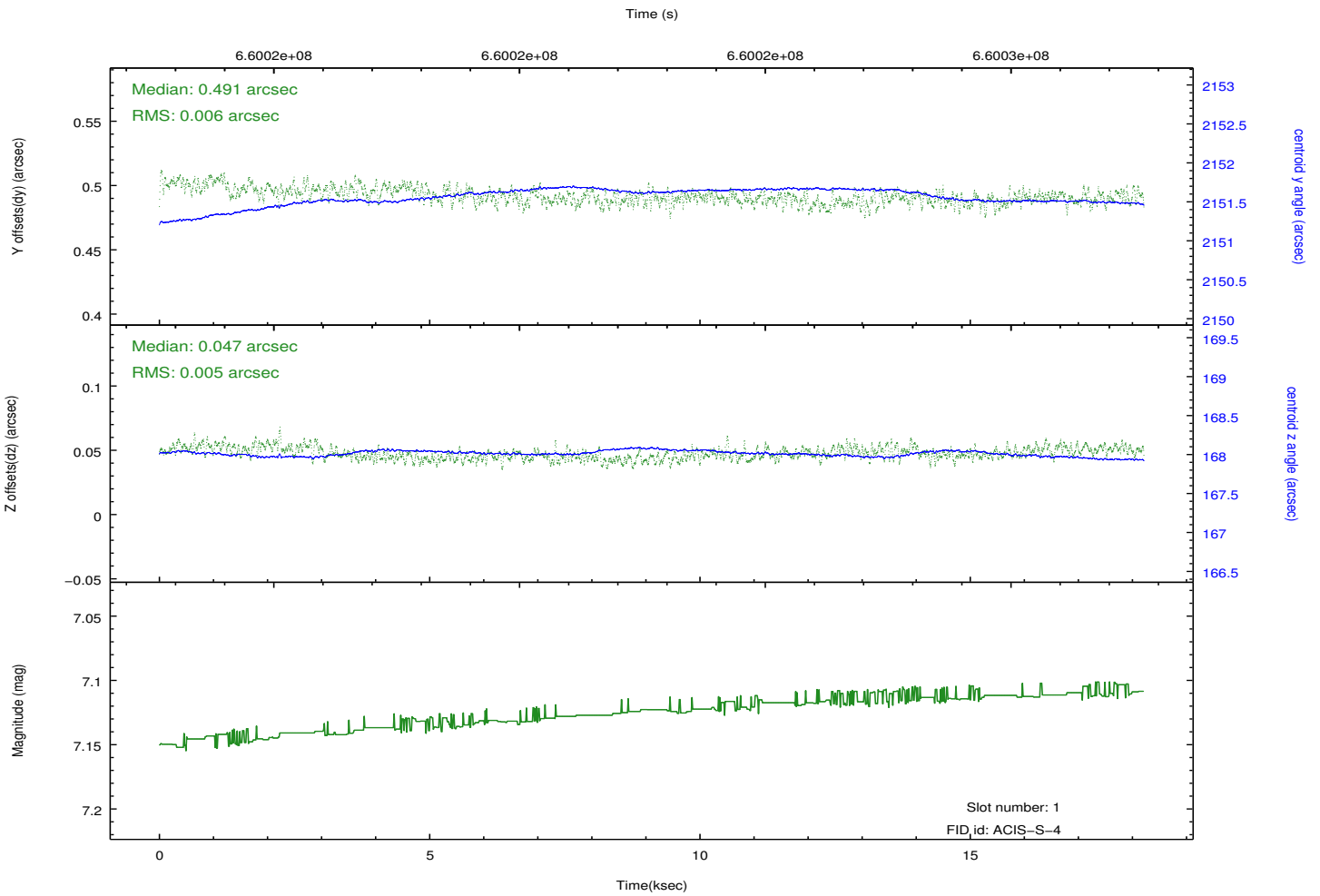
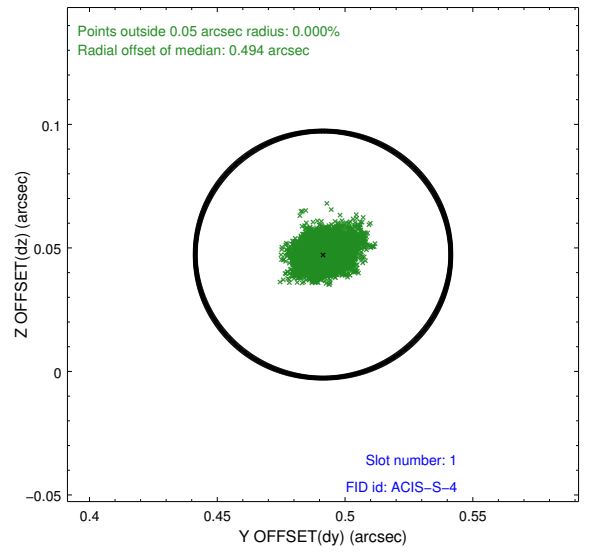
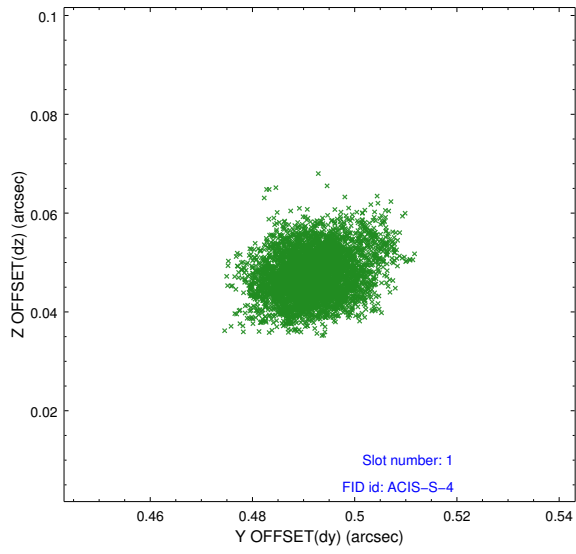


2.5 FID Slots

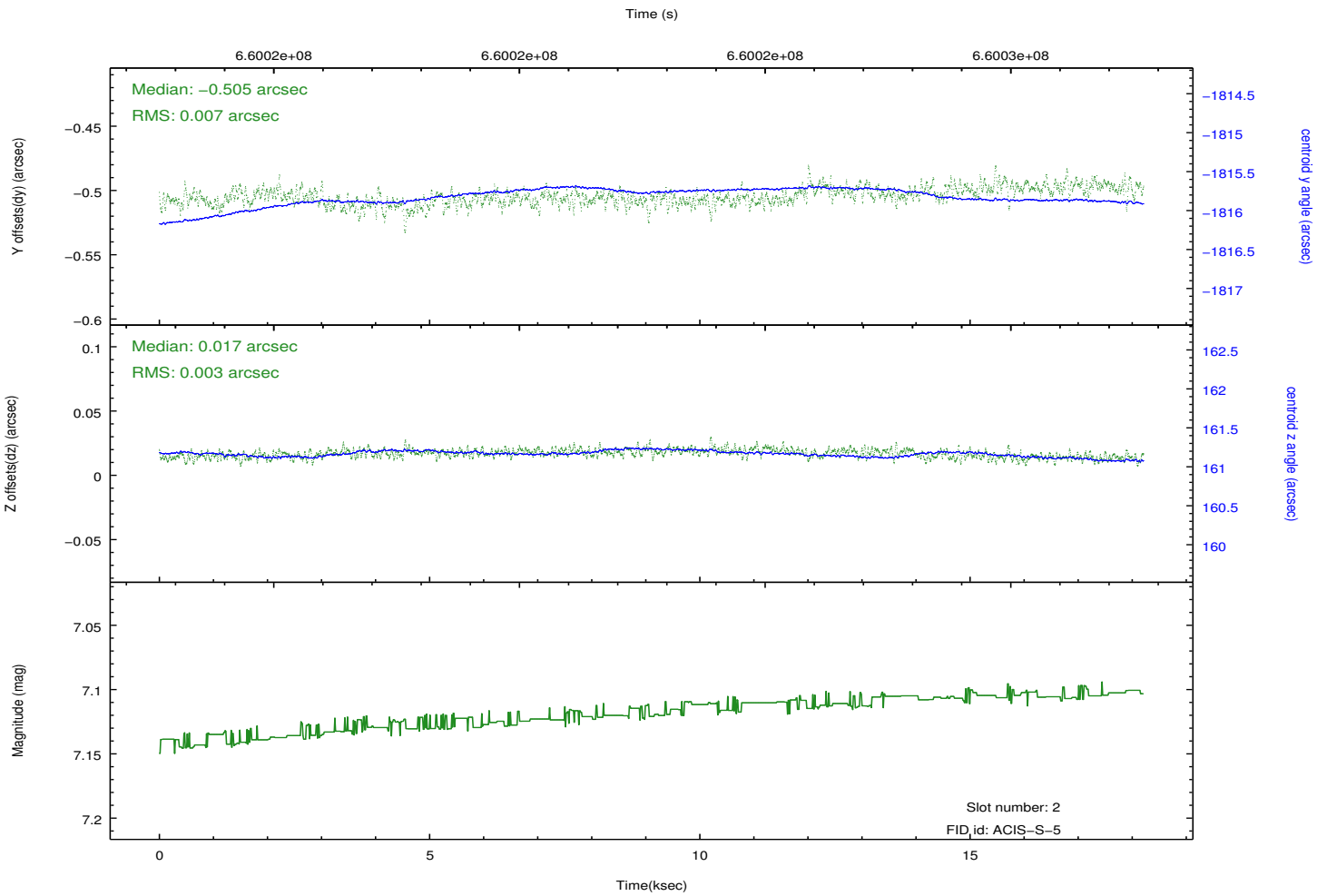
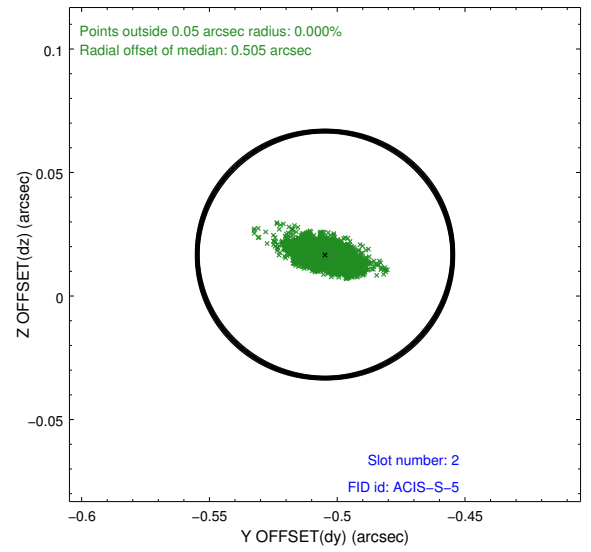
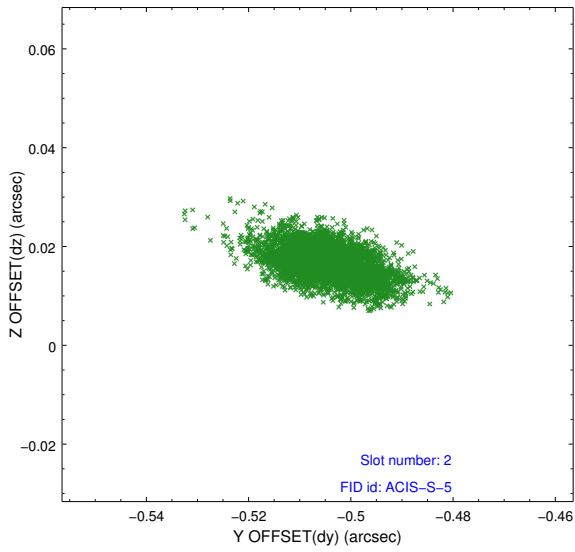
2.5.1 Slot 0



2.5.2 Slot 1



2.5.3 Slot 2



A Summary

A.1 Status

V&V Scientist	Jen Lauer
V&V Date (YYYY-MM-DD)	2018.12.01
V&V Edition	1
V&V Disposition and Status	OK
V&V Charge Time	18.05130013895

A.2 Comments

Optional chip I2 not included.