

# V&V Reference Report

## L2 ASCDS Version : 10.7

Observation 21975 - L2 Version 1  
Chandra X-Ray Center

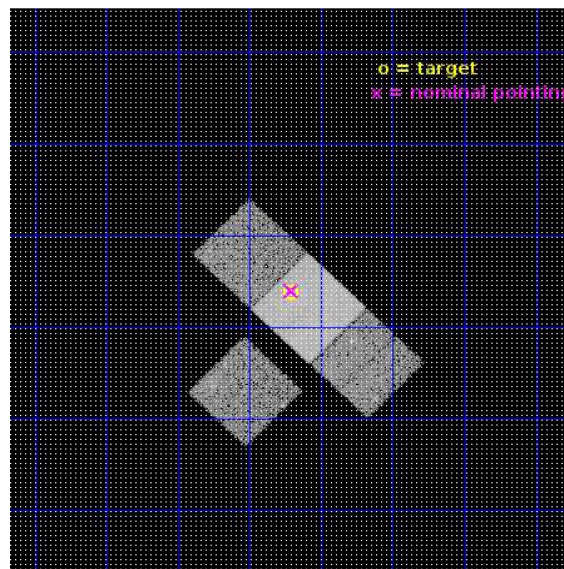
L2 Processing Date : Nov 26 2018

## Contents

<b>1</b>	<b>Front</b>	<b>2</b>
<b>2</b>	<b>OBI</b>	<b>3</b>
2.1	OBI . . . . .	3
2.1.1	Images . . . . .	3
2.1.2	Bias . . . . .	3
2.1.3	Parameters . . . . .	4
2.1.4	Events . . . . .	4
2.2	Compared Parameters . . . . .	5
2.3	Aspect . . . . .	6
2.4	Star Slots . . . . .	9
2.4.1	Slot 3 . . . . .	9
2.4.2	Slot 4 . . . . .	10
2.4.3	Slot 5 . . . . .	11
2.4.4	Slot 6 . . . . .	12
2.4.5	Slot 7 . . . . .	13
2.5	FID Slots . . . . .	14
2.5.1	Slot 0 . . . . .	14
2.5.2	Slot 1 . . . . .	15
2.5.3	Slot 2 . . . . .	16
<b>A</b>	<b>Summary</b>	<b>17</b>
A.1	Status . . . . .	17
A.2	Comments . . . . .	17

# 1 Front

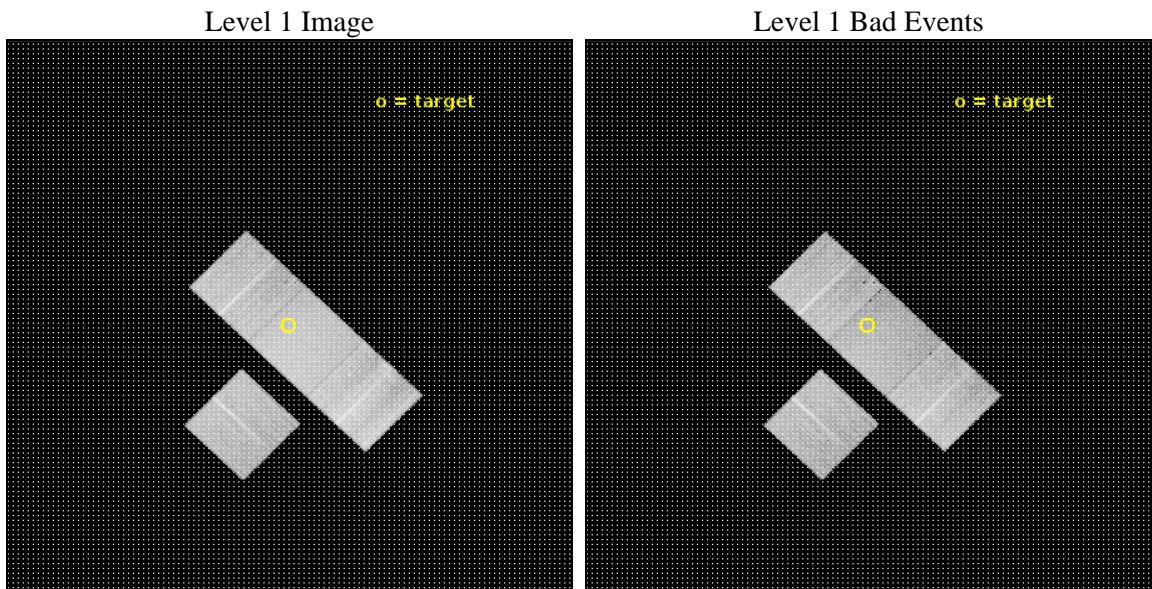
seq_num	201240	Sequence number
obs_id	21975	Observation id
title	Does accretion effect the X-ray emission of Herbig stars?	Proposal
observer	Christian Schneider	Principal investigator
object	V346 Ori	Source name
dtycycle	0	&#160
cycle	P	events from which exps? Prim/Second/Both
ra_targ	81.178333	Observer's specified target RA [deg]
dec_targ	1.730083	Observer's specified target Dec [deg]
ra_nom	81.176992266315	Nominal RA [deg]
dec_nom	1.7333247275657	Nominal Dec [deg]
roll_nom	44.156640599168	Nominal Roll [deg]
revision	1	Processing version of data
ontime	15066.000115991	Sum of GTIs [s]
livetime	14869.151733047	Livetime [s]
ontime3	15066.000115991	Sum of GTIs [s]
ontime6	15066.000115991	Sum of GTIs [s]
ontime7	15066.000115991	Sum of GTIs [s]
ontime8	15066.000115991	Sum of GTIs [s]
l2events	100576	Number of level 2 events



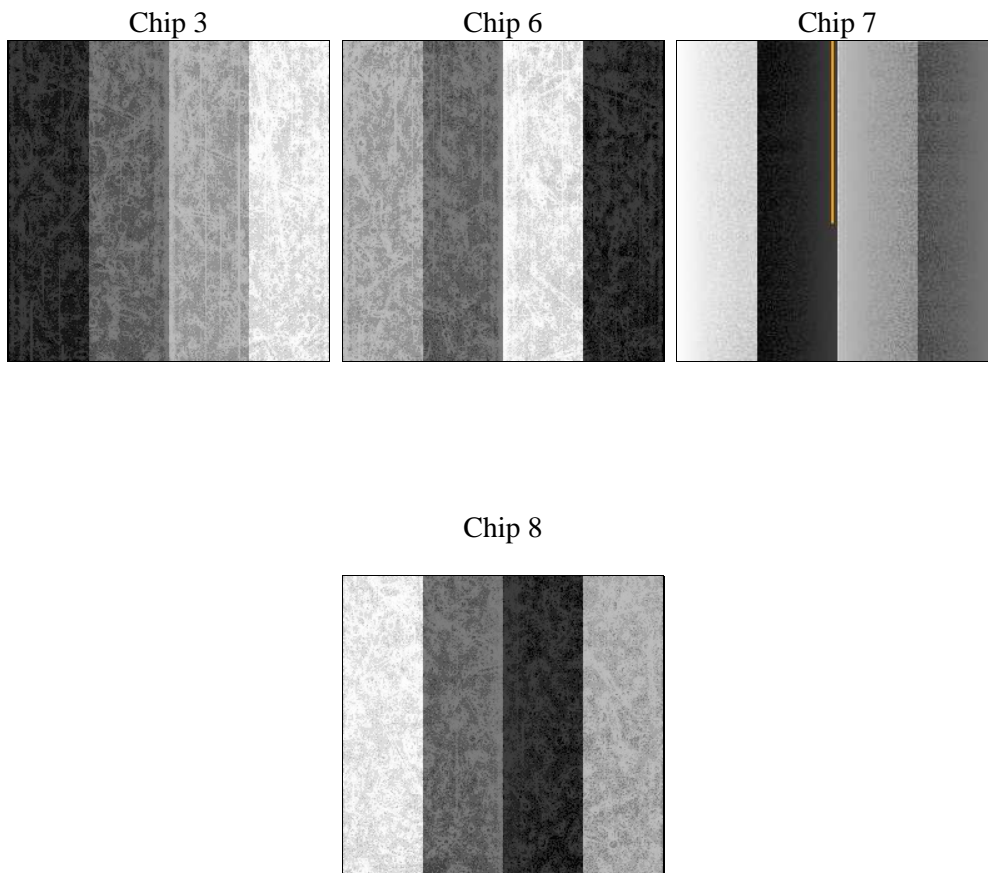
## 2 OBI

### 2.1 OBI

#### 2.1.1 Images



#### 2.1.2 Bias



### 2.1.3 Parameters

obi_num	0	Obi number	sched_exp_time	15000.000000	[s] Scheduled observation exposure time
ascdsver	10.7	Processing system revision	ontime	15066.000115991	Sum of GTIs [s]
caldbver	4.8.0.1	&#160	ontime3	15066.000115991	Sum of GTIs [s]
date	2018-11-26T17:19:14	Date and time of file creation	ontime6	15066.000115991	Sum of GTIs [s]
revision	1	Processing version of data	ontime7	15066.000115991	Sum of GTIs [s]
			ontime8	15066.000115991	Sum of GTIs [s]
			l1events	530411	Number of level 1 events

### 2.1.4 Events

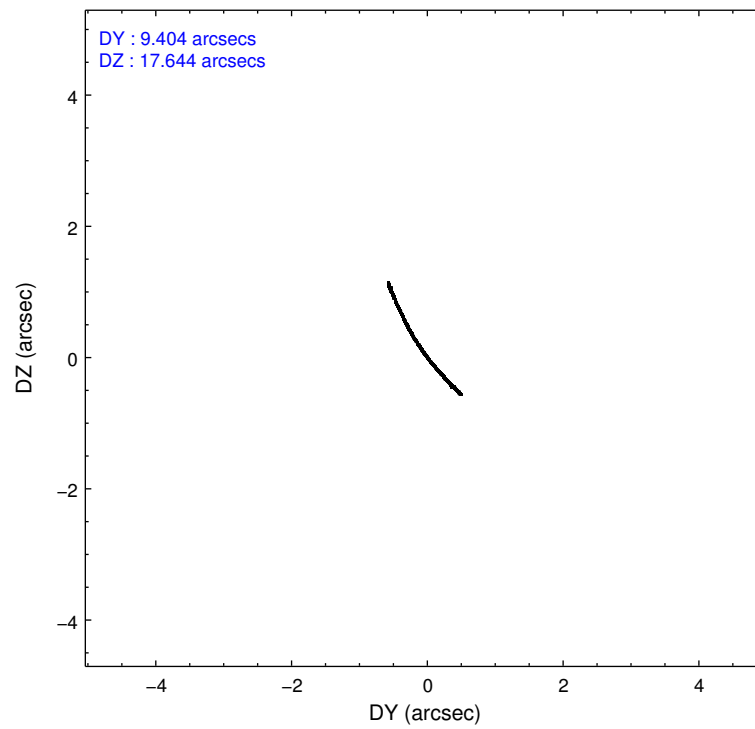
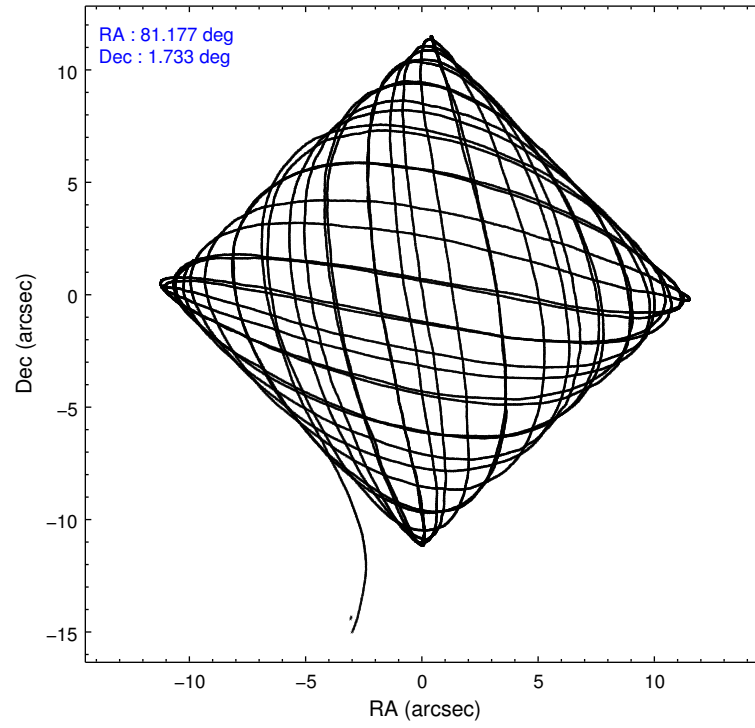
	ccd 3	ccd 6	ccd 7	ccd 8
level 1 events	109611	117642	148434	154724
rejected events	96997	103961	83439	111721
rejected %	88%	88%	56%	72%

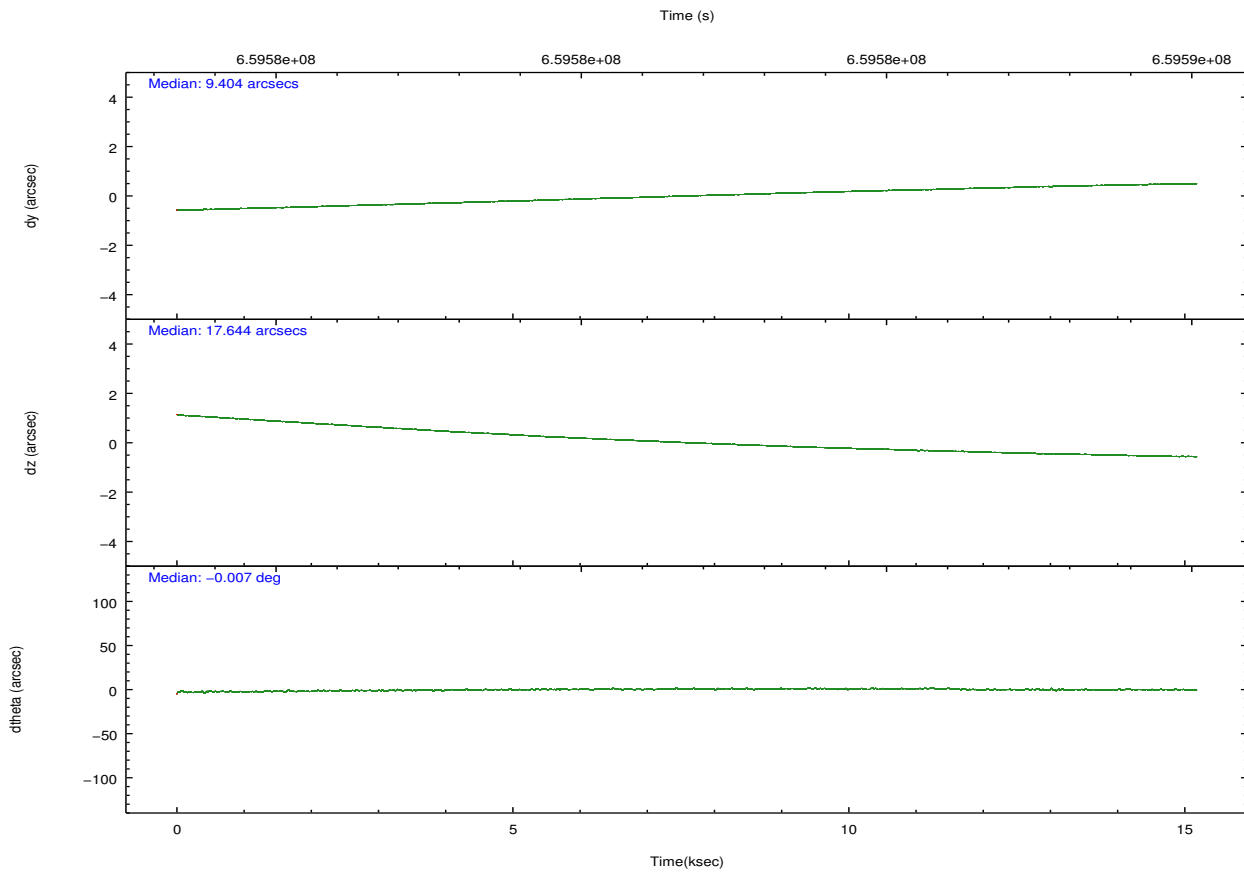
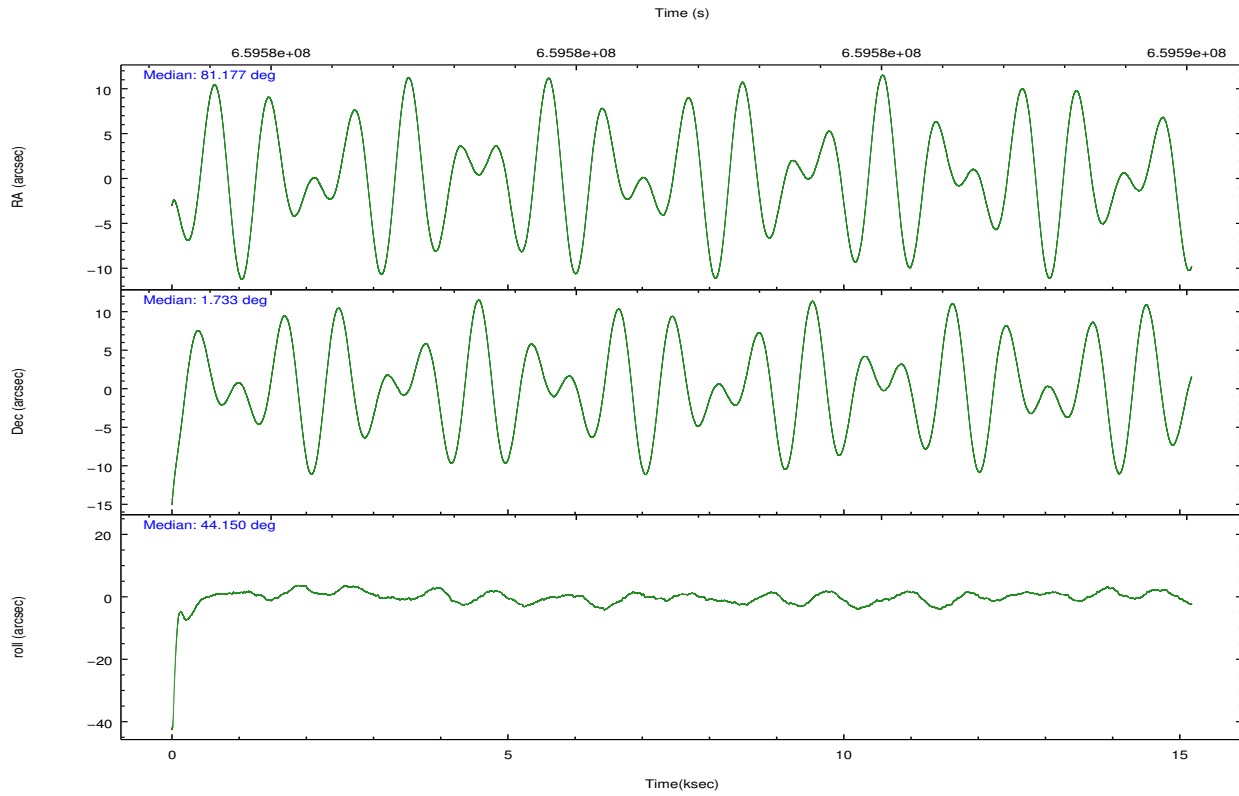
	ccd 3	ccd 6	ccd 7	ccd 8
grade 0 events	4888	4761	5303	12563
	4%	4%	3%	8%
grade 1 events	61	52	211	148
	0%	0%	0%	0%
grade 2 events	2703	3081	14012	10458
	2%	2%	9%	6%
grade 3 events	1262	1344	5173	4528
	1%	1%	3%	2%
grade 4 events	1274	1306	4911	4129
	1%	1%	3%	2%
grade 5 events	5347	5491	14680	8265
	4%	4%	9%	5%
grade 6 events	2493	3193	35611	11326
	2%	2%	23%	7%
grade 7 events	91583	98414	68533	103307
	83%	83%	46%	66%

## 2.2 Compared Parameters

Parameter	Planned	Actual	Parameter	Planned	Actual
Instrument	ACIS	ACIS	Obspar format version number	7	7
Detector	ACIS-3678	ACIS-3678	Obspar file type	PREDICTED	ACTUAL
Grating	NONE	NONE	Obspar update status	NONE	UPDATED
Data mode	VFAINT	VFAINT	CCD I0 on	N	N
Observation mode	POINTING	POINTING	CCD I1 on	N	N
[deg] Pointing RA	81.169880	81.17699226631544	CCD I2 on	O1	N
[deg] Pointing Dec	1.706838	1.733324727565695	CCD I3 on	Y	Y
[deg] Pointing Roll	44.000261	44.1566405991679	CCD S0 on	N	N
[mm] SIM focus pos	-0.684267	-0.6828225247311905	CCD S1 on	N	N
[mm] SIM defocus	0	0.001444936568705701	CCD S2 on	Y	Y
[mm] SIM translation stage pos	-190.132523	-190.1425803651734	CCD S3 on	Y	Y
[mm] SIM translation stage offset	0	0.01005778216563158	CCD S4 on	Y	Y
[s] Observation start time (MET)	659574302.184000	659573127.27645	CCD S5 on	N	N
Observation start date	2018-11-25T23:03:53	2018-11-25T22:45:27	Number of optional ACIS chips dropped	1	1
[s] Observation end time (MET)	659589302.184000	659590268.86497	On-chip summing requested	N	N
Observation end date	2018-11-26T03:13:53	2018-11-26T03:31:08	Subarray requested	NONE	NONE
Read mode	TIMED	TIMED	Alternating exposures requested	N	N
			[s] Primary exposure time	0.000000	3.1

## 2.3 Aspect





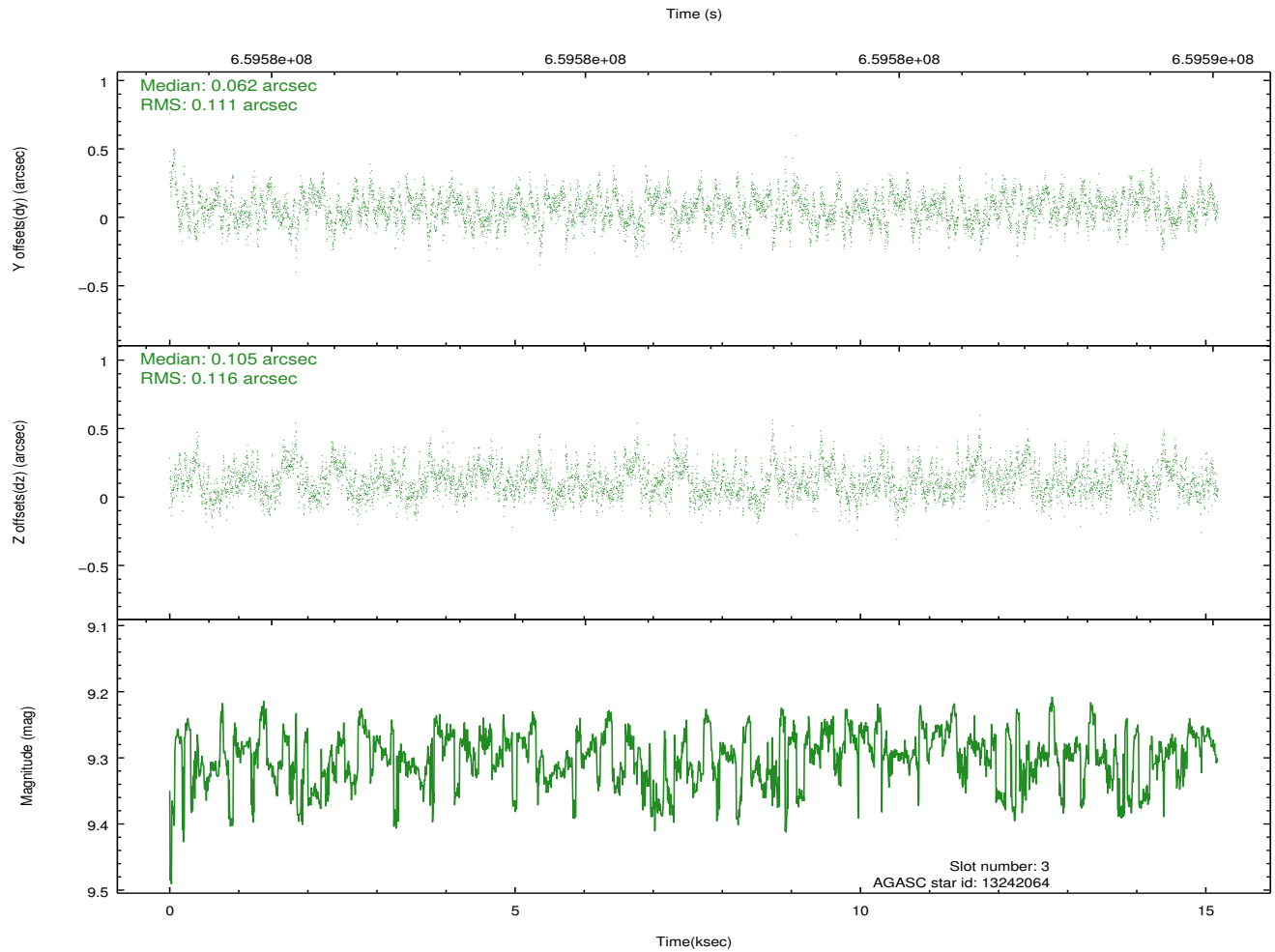
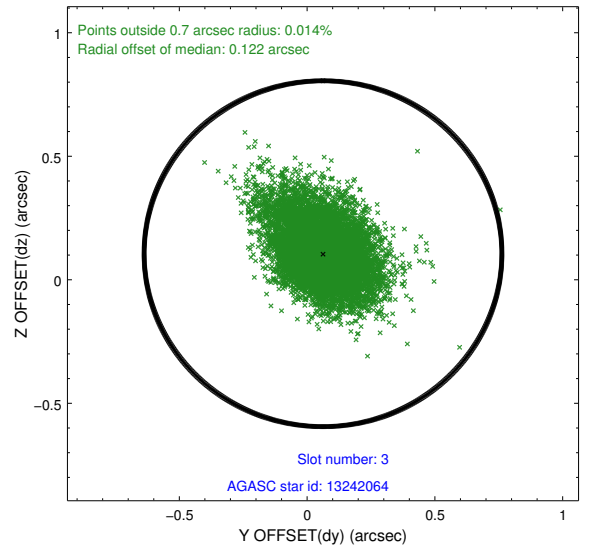
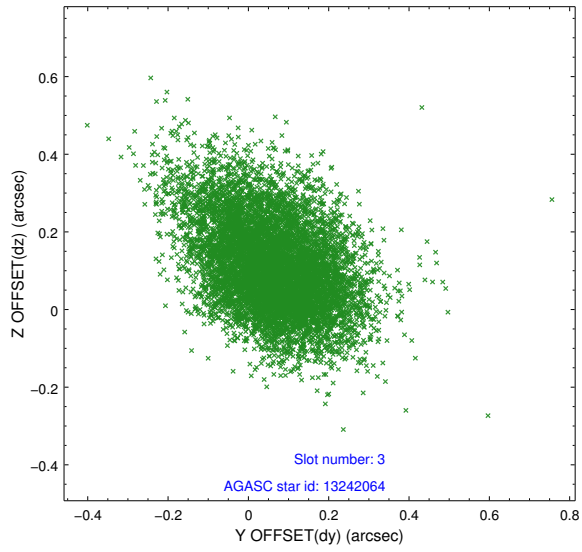
### Slot Statistics

slot	status	used	id	mag	n_pts	frac_pts	med_dy	med_dz	dr1	dr2	ra	dec	mean_y	mean_x
0	FID		ACIS-S-1	7.10	3702	1.000	0.031	-0.055	0.021	0.030	0.000000	0.000000	933.92	-1734
1	FID		ACIS-S-4	7.12	3702	1.000	0.480	0.026	0.022	0.040	0.000000	0.000000	2151.87	169
2	FID		ACIS-S-5	7.11	3701	1.000	-0.542	0.039	0.015	0.033	0.000000	0.000000	-1815.21	162
3	GUIDE	used	13242064	9.30	7393	1.000	0.062	0.105	0.166	0.282	81.830009	1.606239	1458.35	-1910
4	GUIDE	used	13243912	6.63	7403	1.000	0.141	0.579	0.074	0.120	81.264652	1.185597	-1057.15	-1586
5	GUIDE	used	13120592	8.12	7401	1.000	-0.023	-0.179	0.100	0.174	80.386741	1.864037	-1633.34	2364
6	GUIDE	used	13784080	6.83	7403	1.000	-0.297	-0.475	0.122	0.194	81.150422	2.353162	1565.82	1722
7	GUIDE	used	13766064	8.95	7395	1.000	0.120	-0.023	0.147	0.228	81.700439	2.068290	2278.07	-389

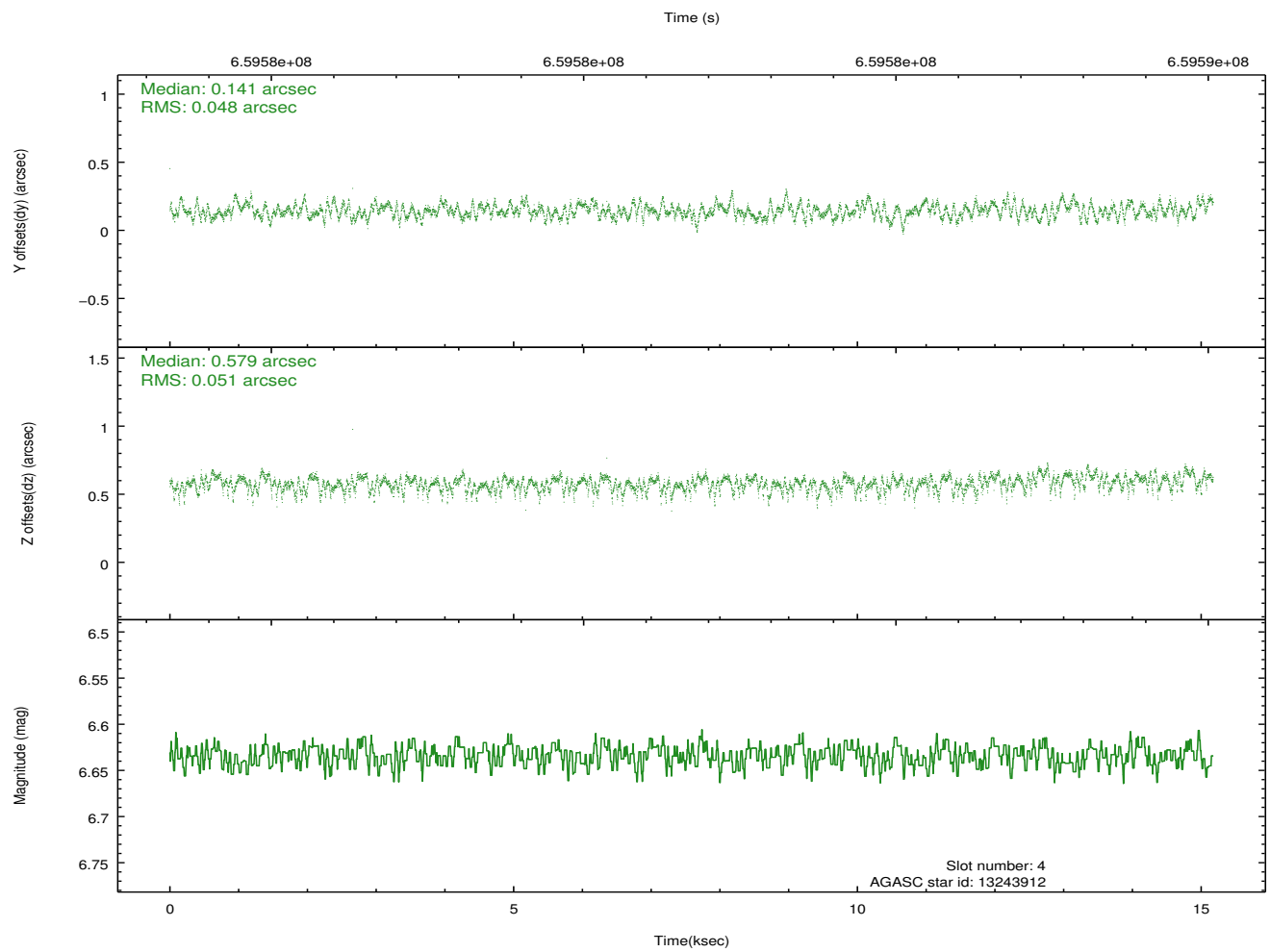
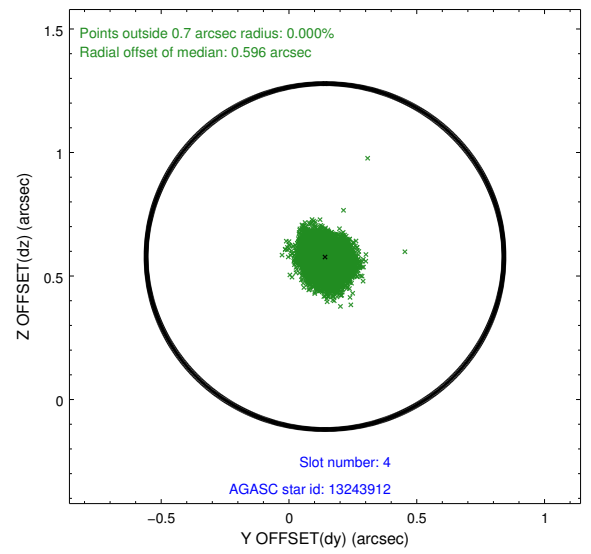
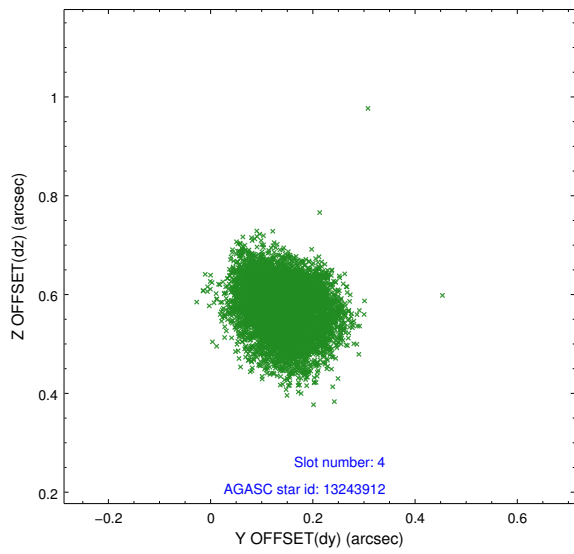
∞

## 2.4 Star Slots

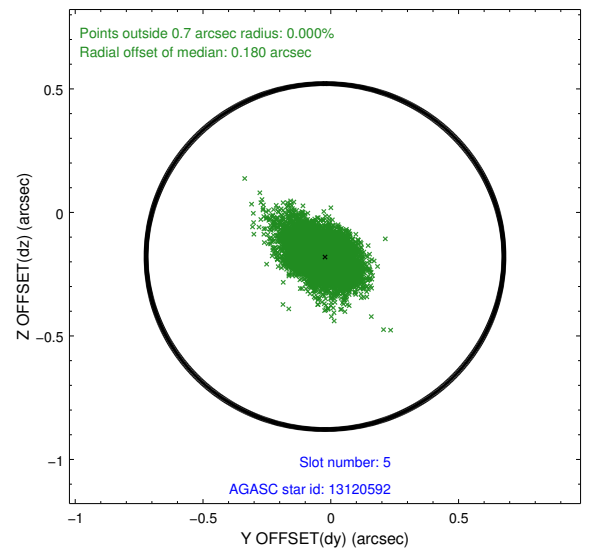
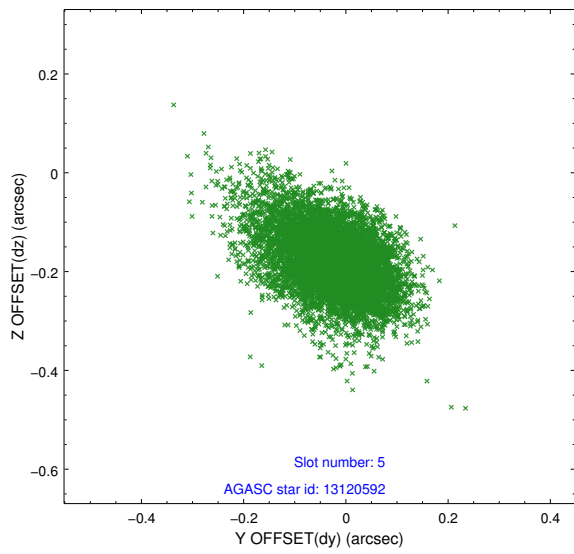
### 2.4.1 Slot 3



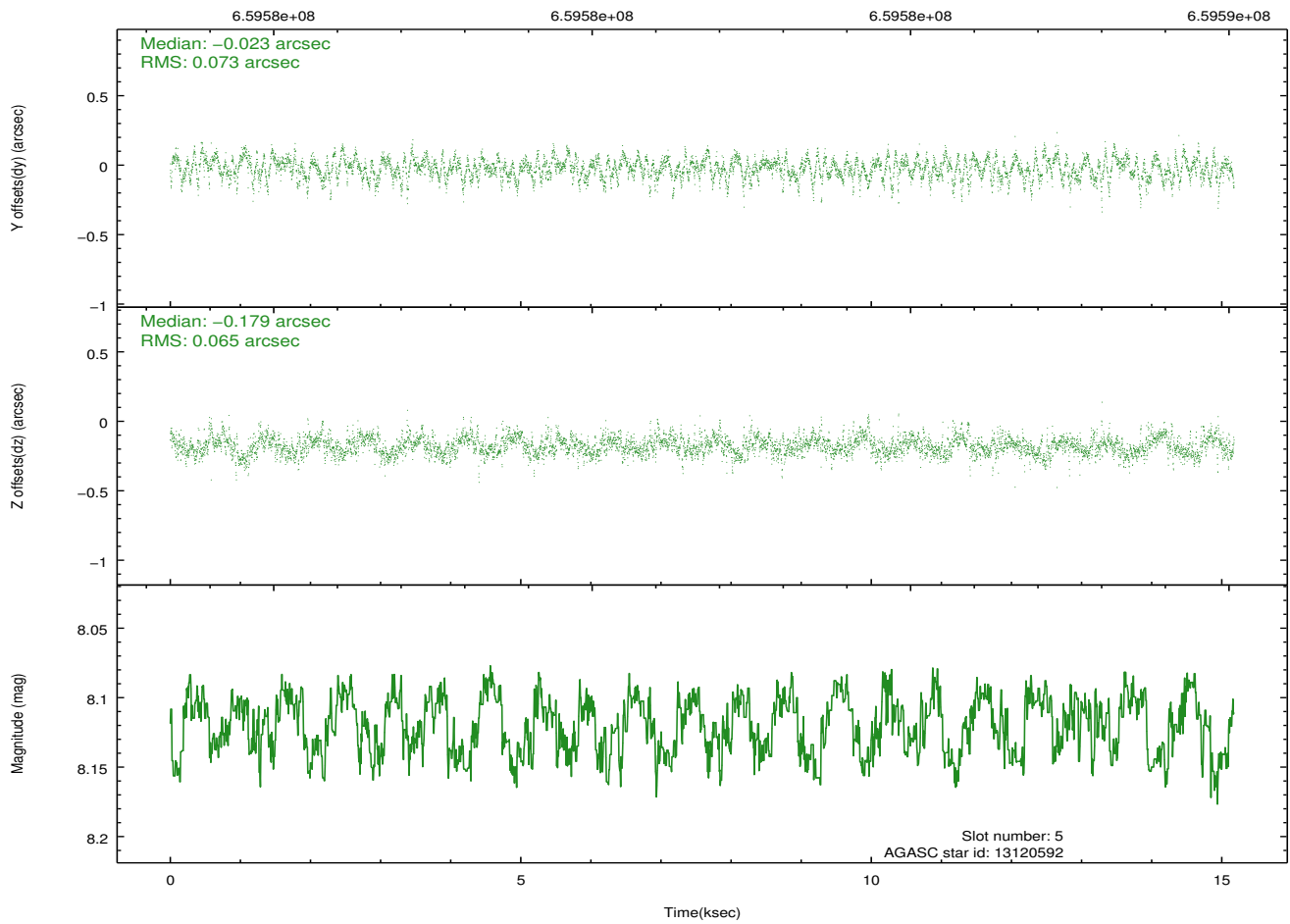
## 2.4.2 Slot 4



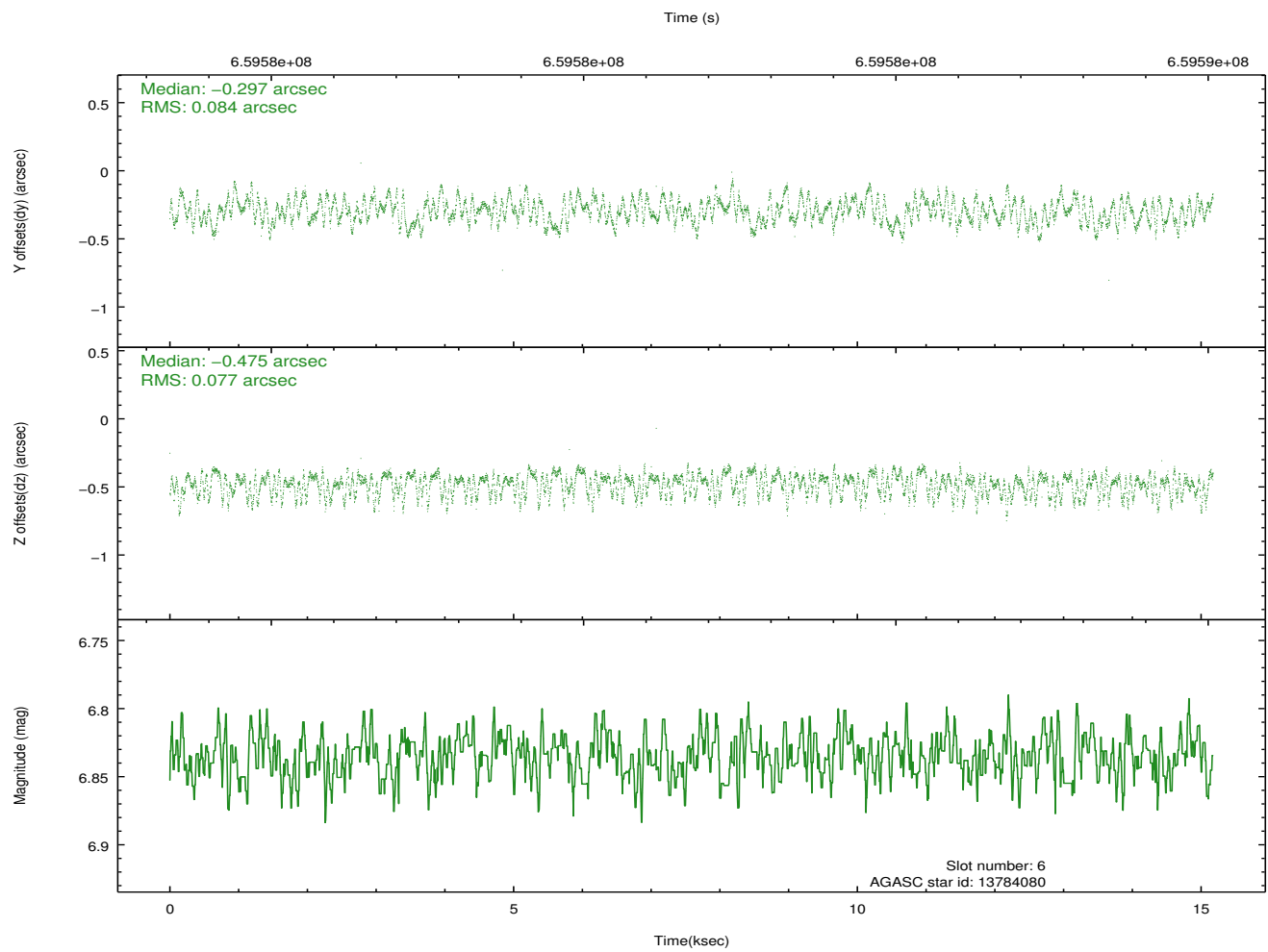
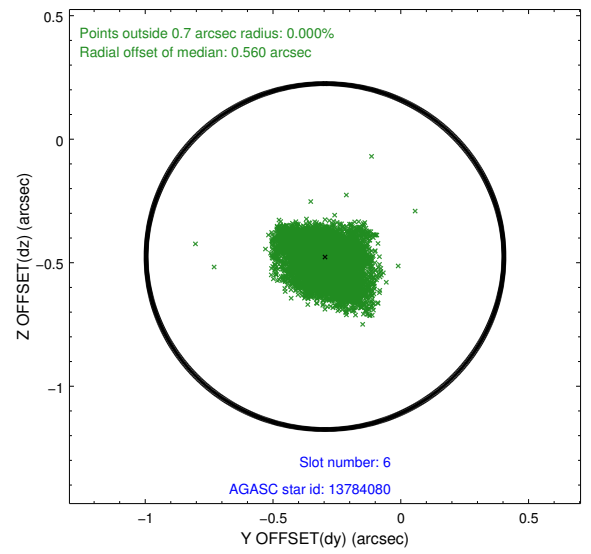
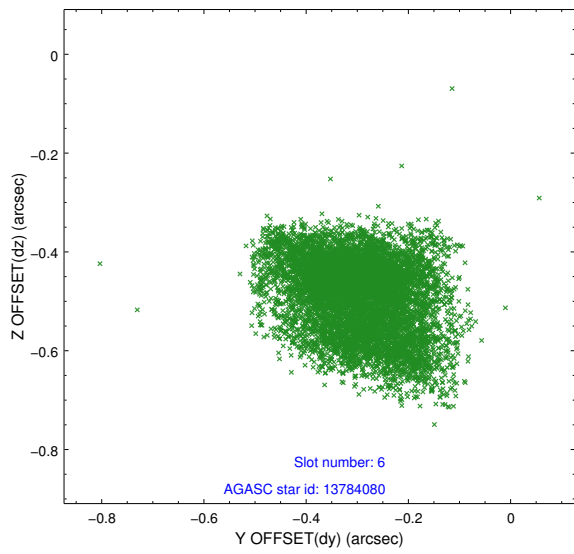
### 2.4.3 Slot 5



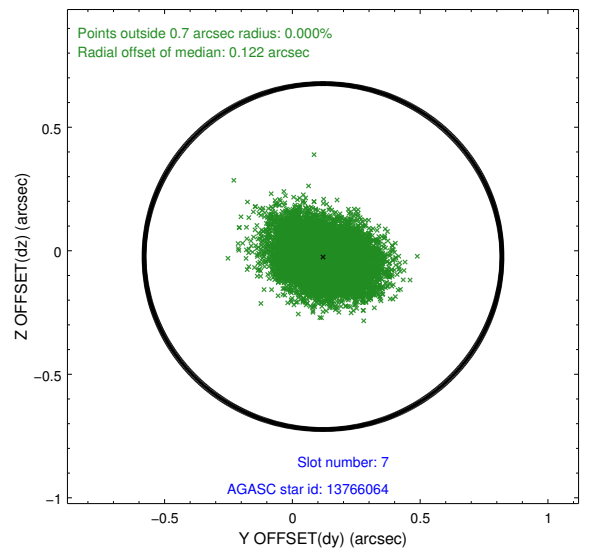
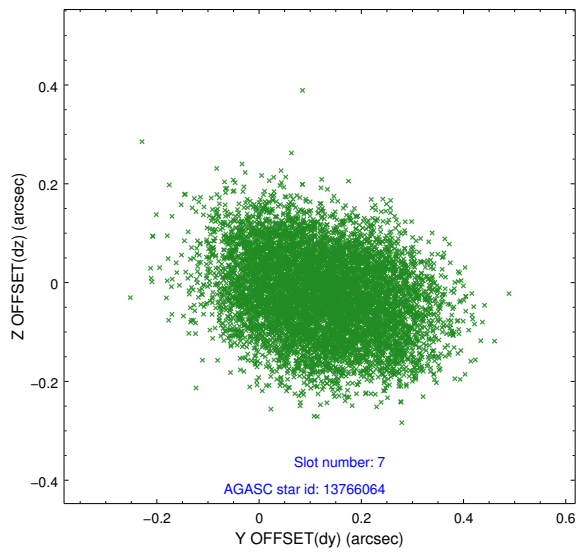
Time (s)



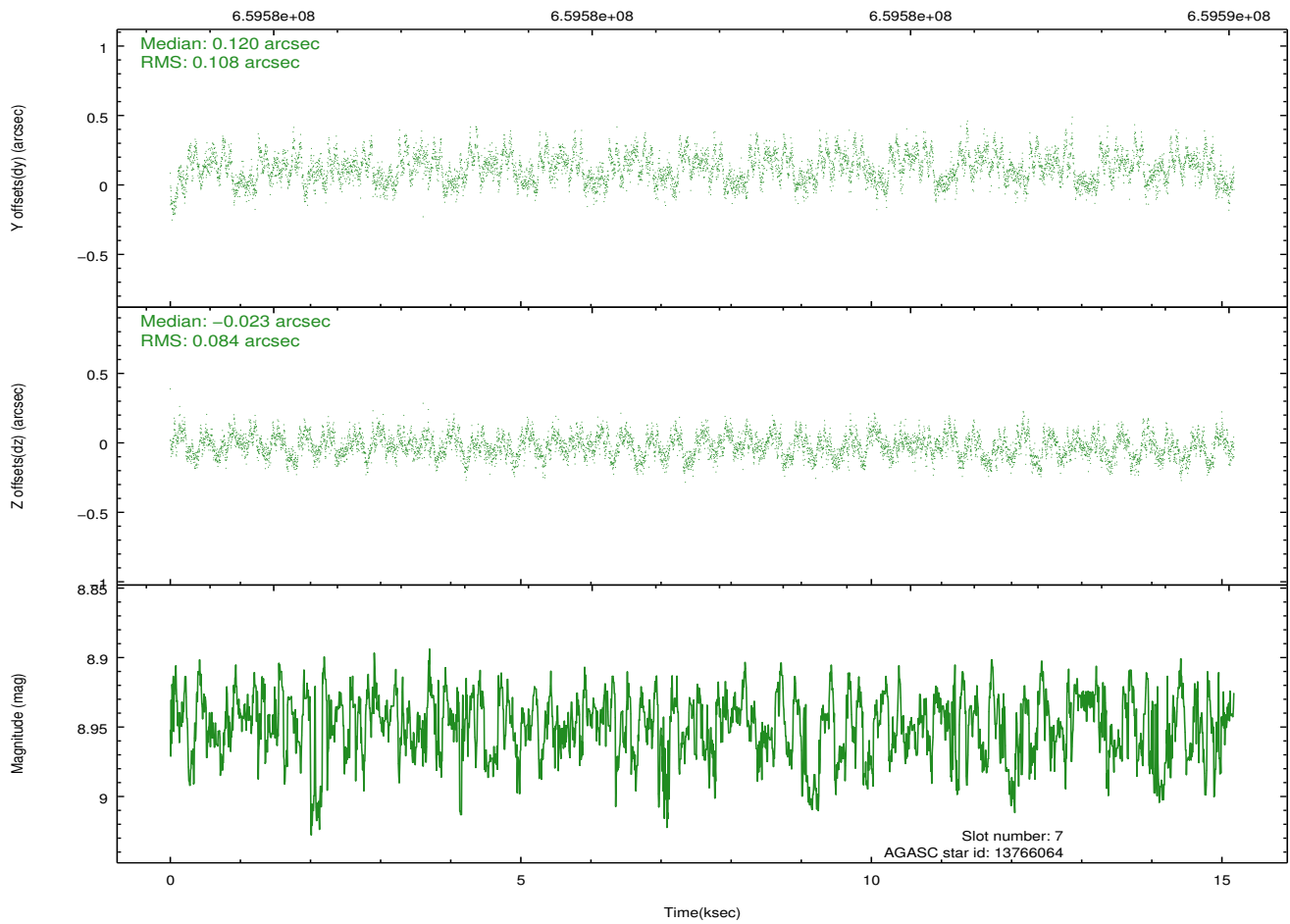
## 2.4.4 Slot 6



## 2.4.5 Slot 7

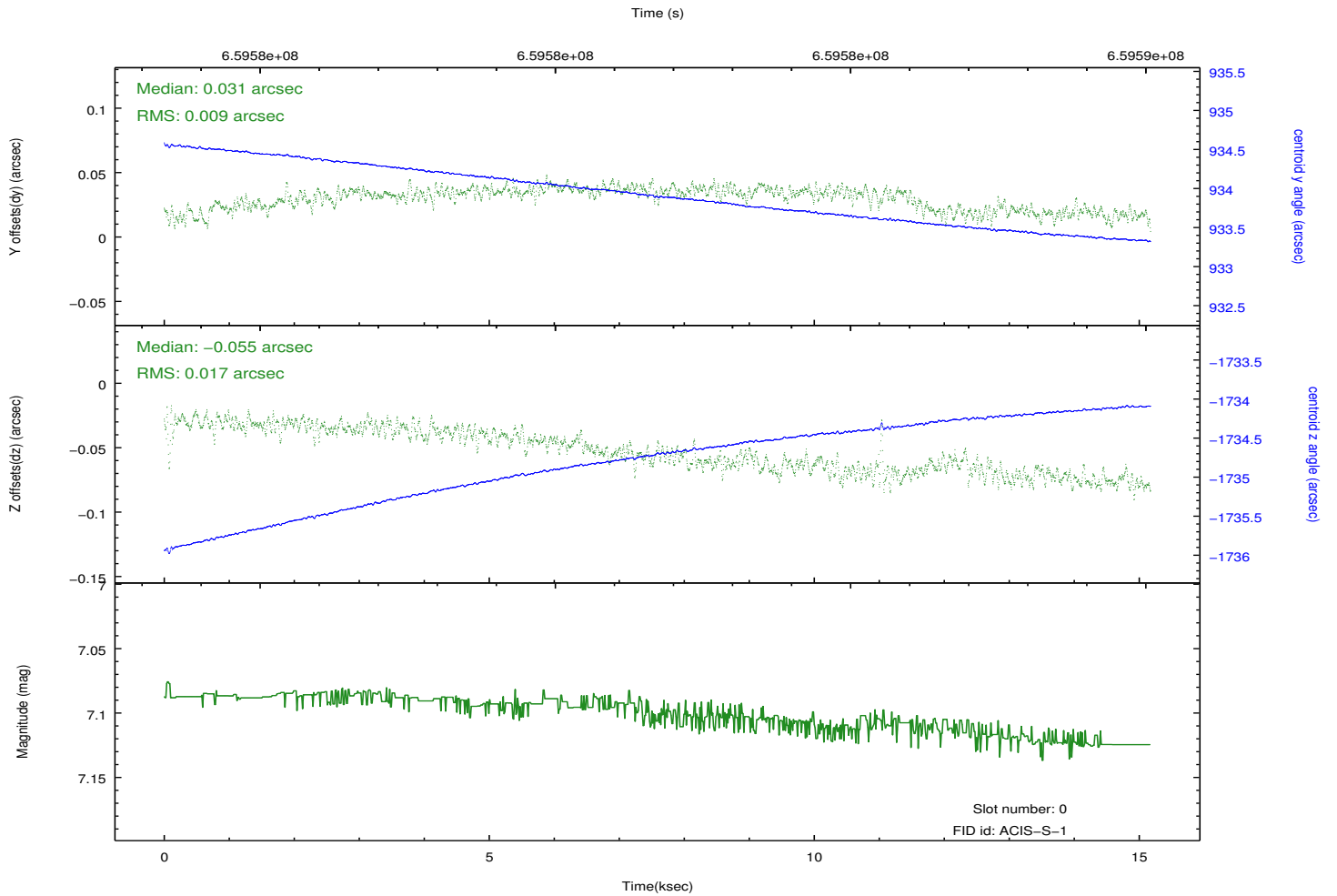
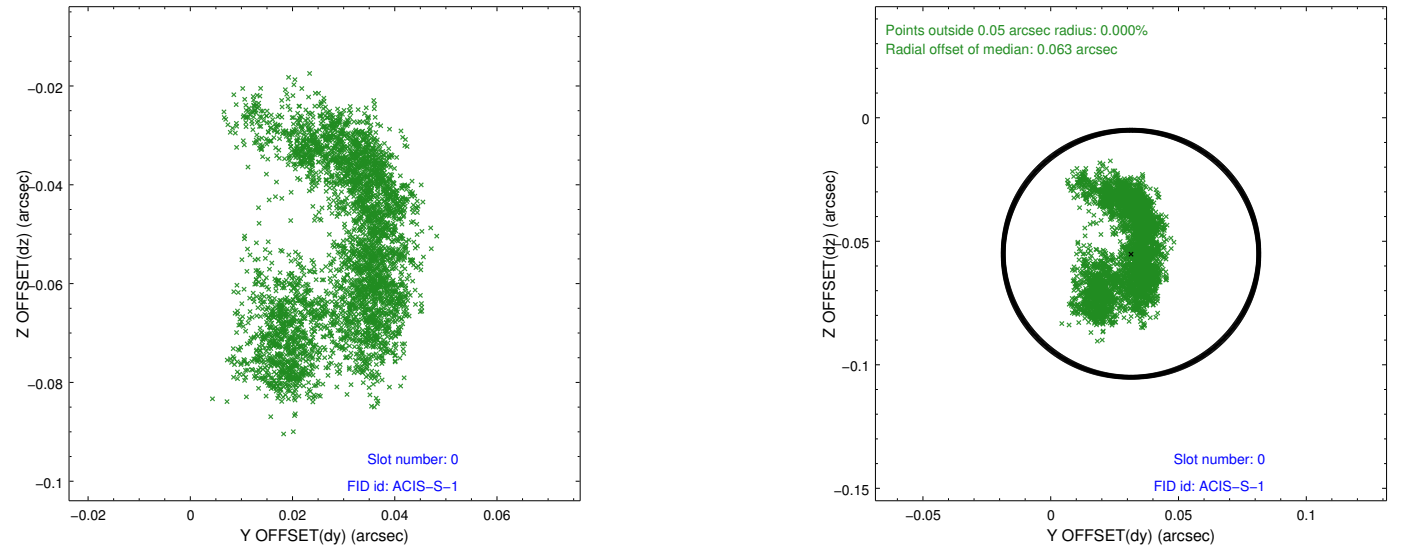


Time (s)

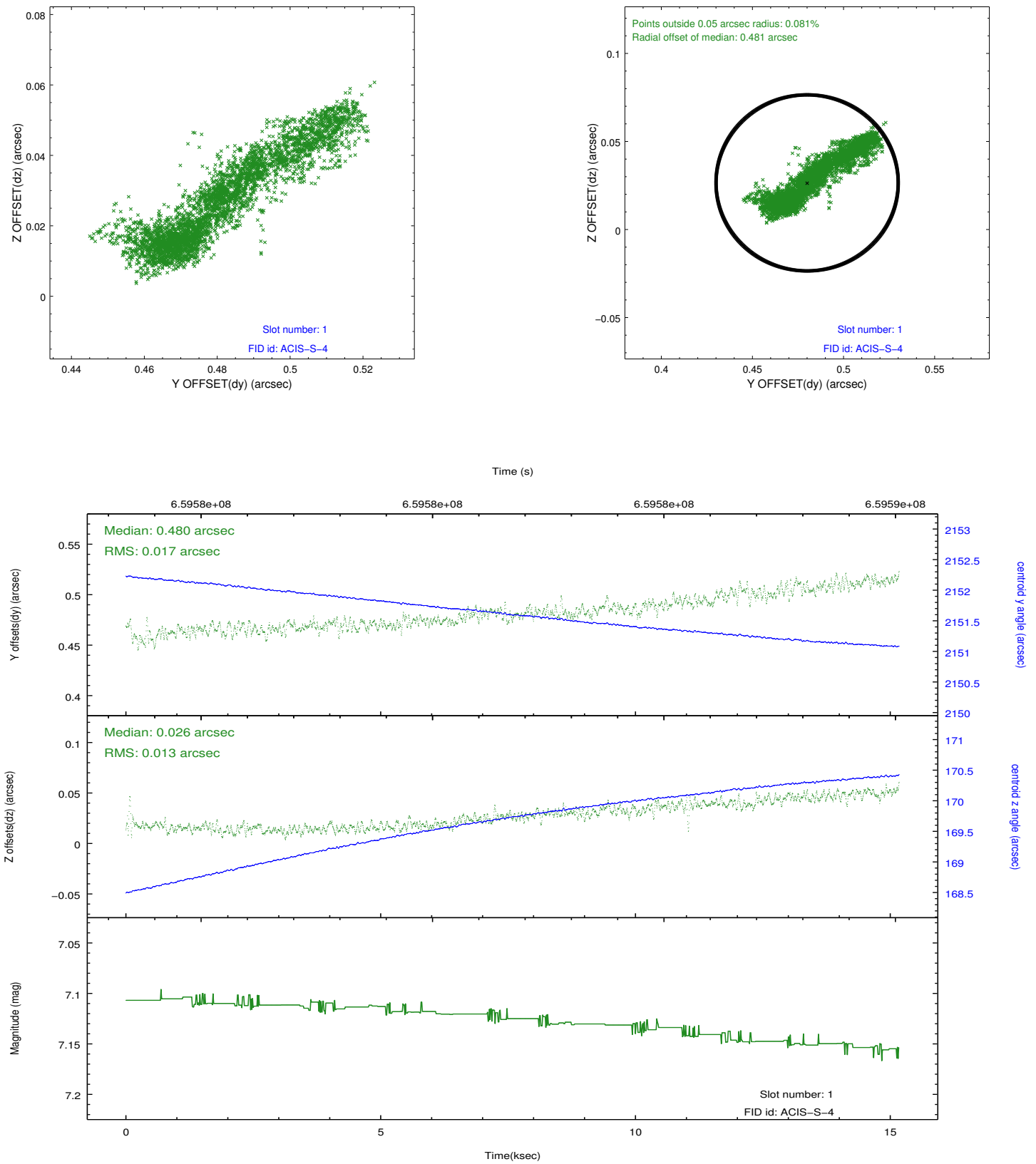


## 2.5 FID Slots

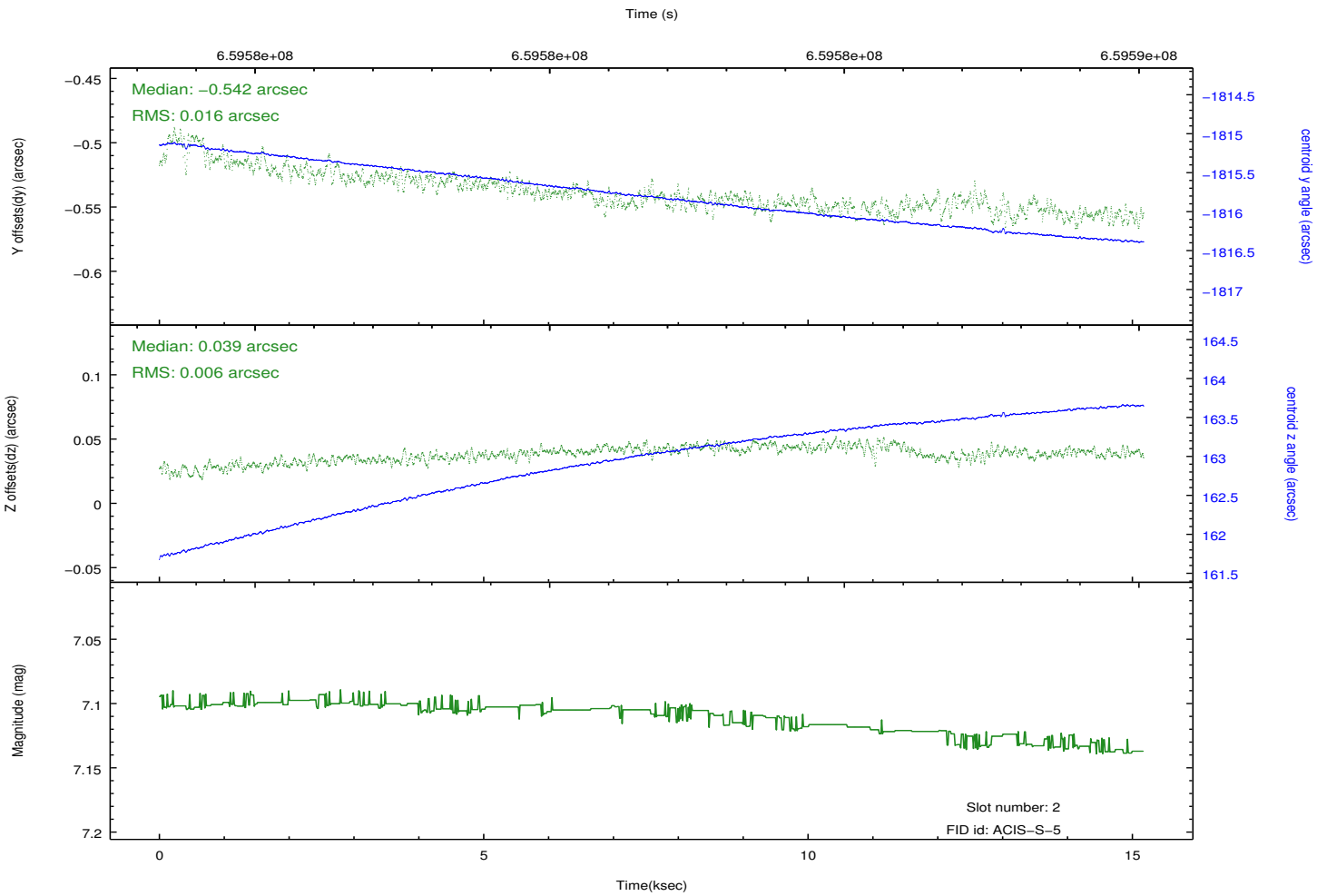
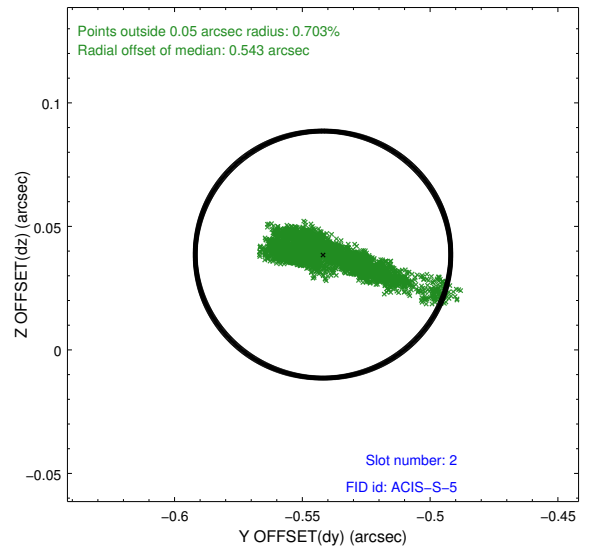
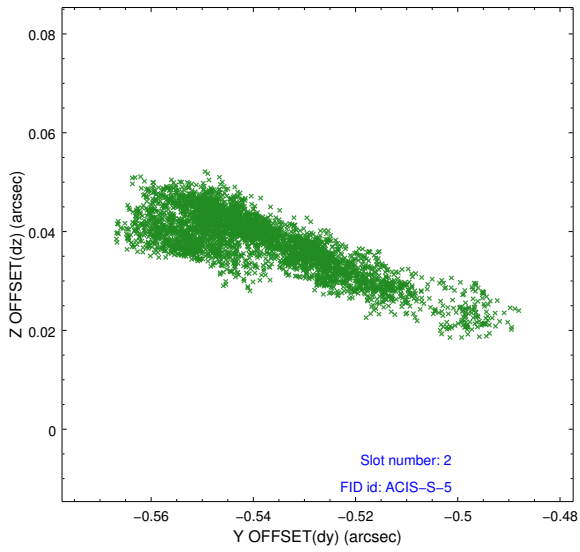
### 2.5.1 Slot 0



## 2.5.2 Slot 1



### 2.5.3 Slot 2



# A Summary

## A.1 Status

V&V Scientist	Jen Lauer
V&V Date (YYYY-MM-DD)	2018.11.26
V&V Edition	1
V&V Disposition and Status	OK
V&V Charge Time	15.066000115991

## A.2 Comments

Optional chip I2 not included.