

V&V Reference Report

L2 ASCDS Version : 10.8

Observation 22149 - L2 Version 1
Chandra X-Ray Center

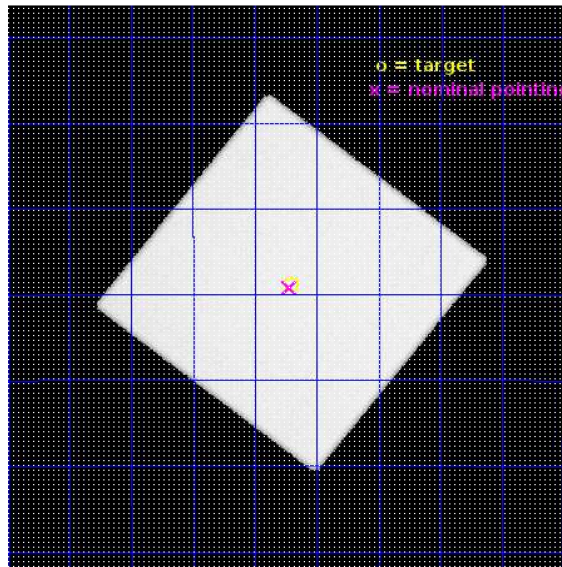
L2 Processing Date : Jul 16 2019

Contents

1	Front	2
2	OBI	3
2.1	OBI	3
2.1.1	Images	3
2.1.2	Parameters	4
2.1.3	Events	4
2.2	Compared Parameters	5
2.3	Aspect	6
2.4	Star Slots	9
2.4.1	Slot 3	9
2.4.2	Slot 4	10
2.4.3	Slot 5	11
2.4.4	Slot 6	12
2.4.5	Slot 7	13
2.5	FID Slots	14
2.5.1	Slot 0	14
2.5.2	Slot 1	15
2.5.3	Slot 2	16
A	Summary	17
A.1	Status	17
A.2	Comments	17

1 Front

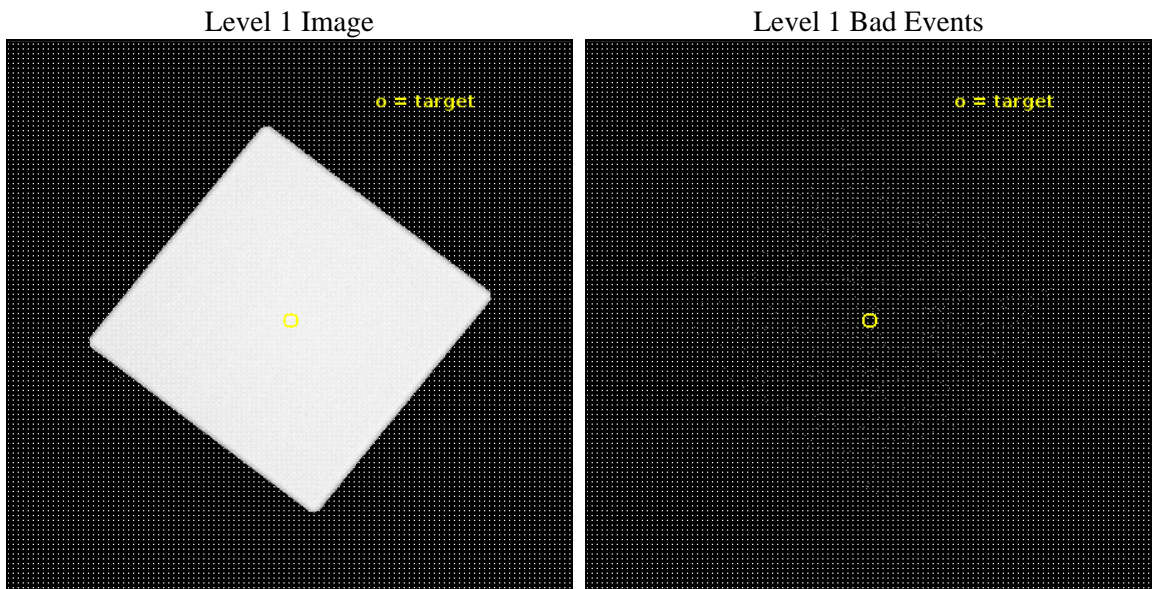
seq_num	100179	Sequence number
obs_id	22149	Observation id
title	Is X-ray Aurora Produced by Magnetic Unloading?	Proposal title
observer	William Dunn	Principal investigator
object	Jupiter	Source name
ra_targ	254.051788	Observer's specified target RA [deg]
dec_targ	-22.147265	Observer's specified target Dec [deg]
ra_nom	254.05530088572	Nominal RA [deg]
dec_nom	-22.153550141105	Nominal Dec [deg]
roll_nom	263.0740013826	Nominal Roll [deg]
revision	1	Processing version of data
ontime	25144.532750487	[s]
livetime	24798.22992616	Ontime multiplied by DTCOR
l2events	2999104	Number of level 2 events



2 OBI

2.1 OBI

2.1.1 Images



2.1.2 Parameters

obi_num	0	Obi number	sched_exp_time	25000.000000	[s] Scheduled observation exposure time
ascdsver	10.8	Processing system revision	ontime	25144.532760501	[s]
caldsver	4.8.3.1	 	l1events	4131735	Number of level 1 events
date	2019-07-17T00:01:10	Date and time of file creation			
revision	1	Processing version of data			

2.1.3 Events

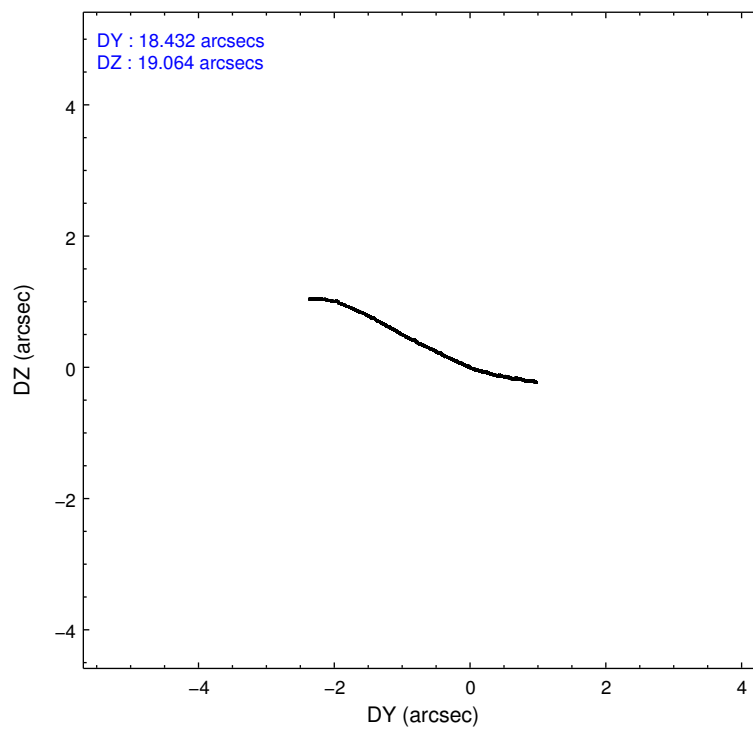
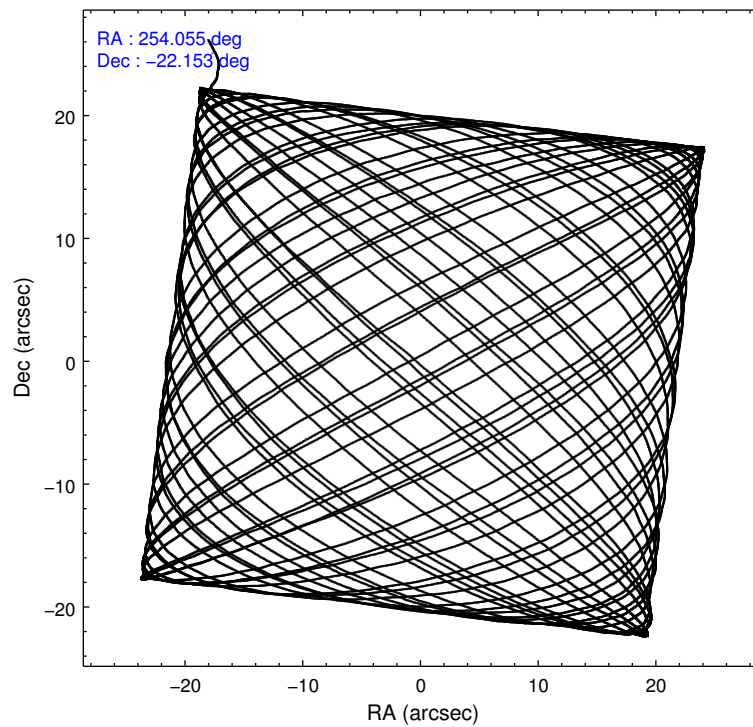
Level 1 Events

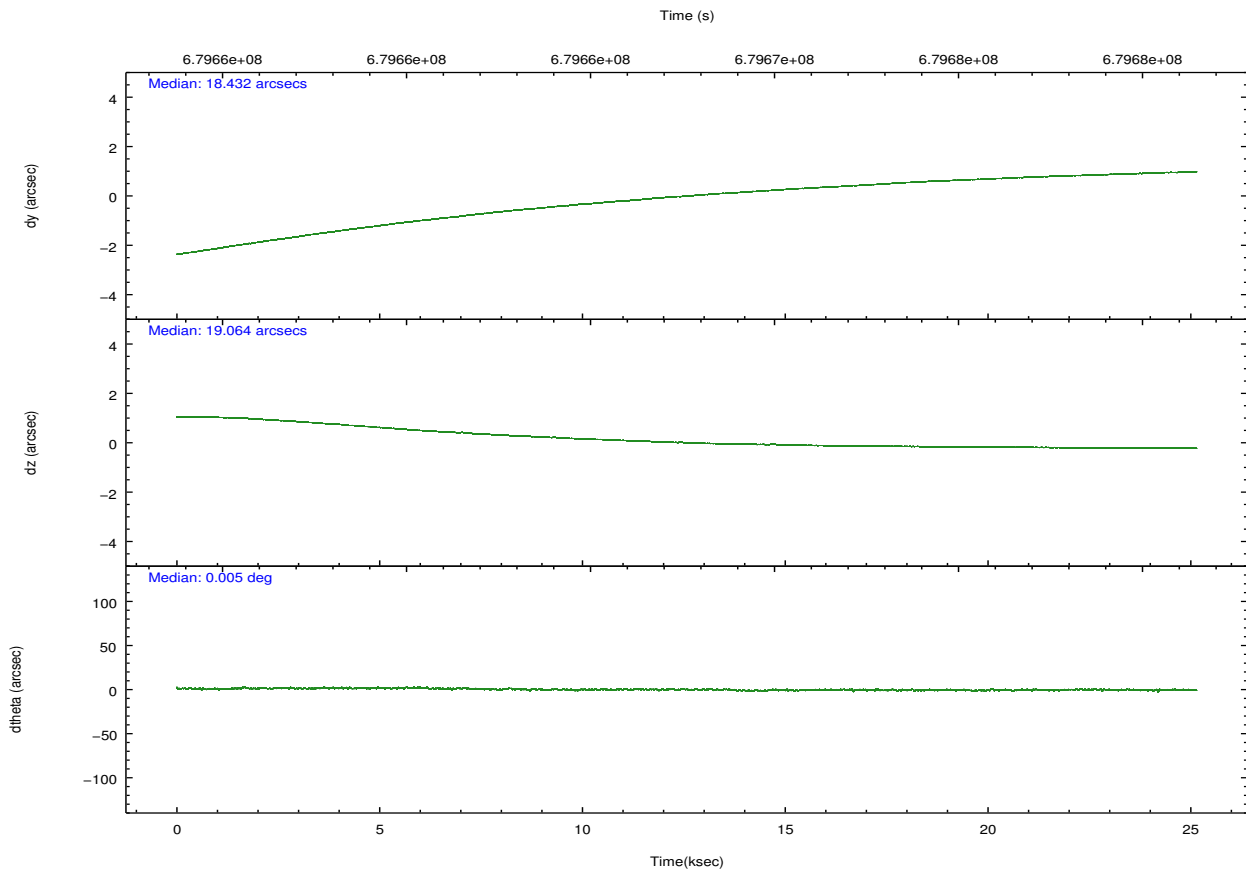
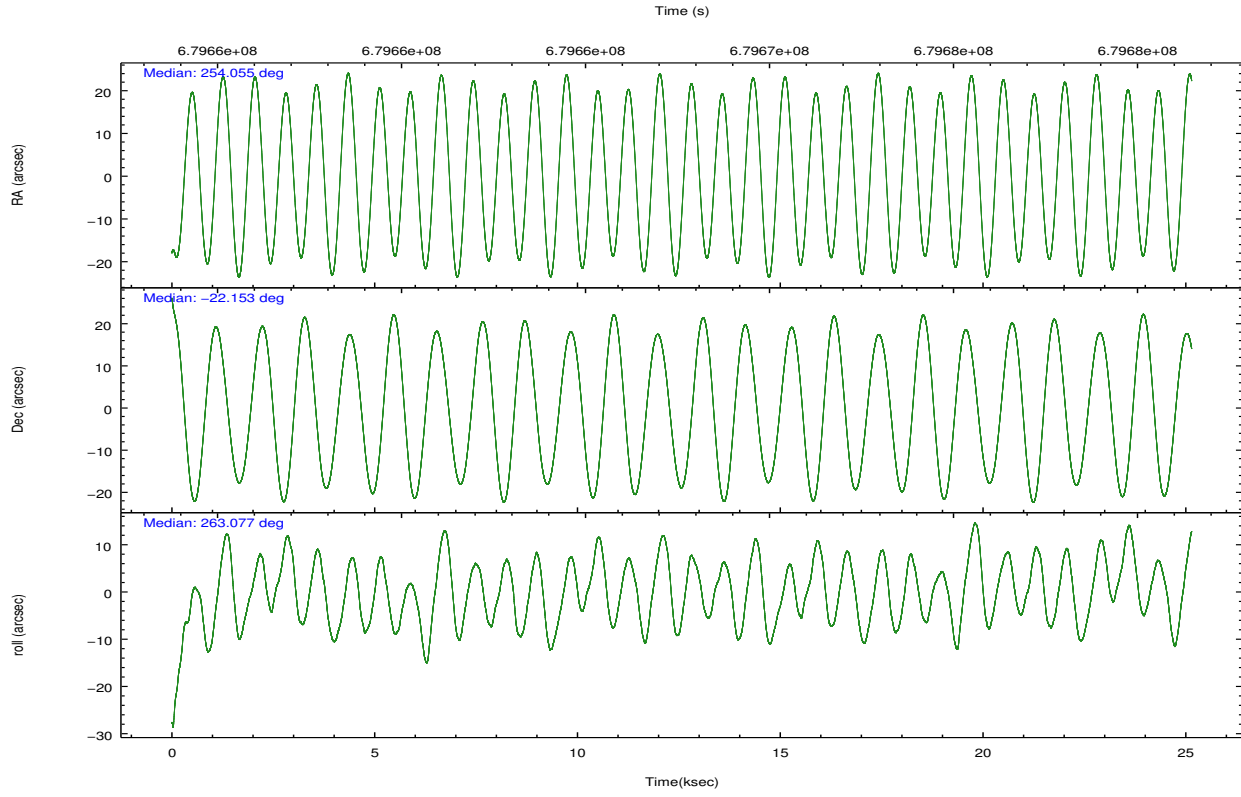
	segment 0
level 1 events	4131735
rejected events	179000
rejected %	4%

2.2 Compared Parameters

Parameter	Planned	Actual	Parameter	Planned	Actual
Instrument	HRC	HRC	Obspar format version number	7	7
Detector	HRC-I	HRC-I	Obspar file type	PREDICTED	ACTUAL
Grating	NONE	NONE	Obspar update status	NONE	UPDATED
Data mode	OBSERVING	OBSERVING			
Observation mode	POINTING	POINTING			
[deg] Pointing RA	254.043149	254.0553008857176			
[deg] Pointing Dec	-22.128700	-22.15355014110531			
[deg] Pointing Roll	263.164915	263.0740013826024			
[s] Window start time (MET)	679654869.184000	679654869.184000			
[s] Window stop time (MET)	679680669.184000	679680669.184000			
[mm] SIM focus pos	-1.040293	-1.038866356238299			
[mm] SIM defocus	0	0.001426264420575141			
[mm] SIM translation stage pos	126.985494	126.9829799899862			
[mm] SIM translation stage offset	0	0.002508901615314585			
[s] Observation start time (MET)	679655187.184000	679653959.85276			
Observation start date	2019-07-16T09:05:18	2019-07-16T08:45:59			
[s] Observation end time (MET)	679680187.184000	679681237.66689			
Observation end date	2019-07-16T16:01:58	2019-07-16T16:20:37			

2.3 Aspect





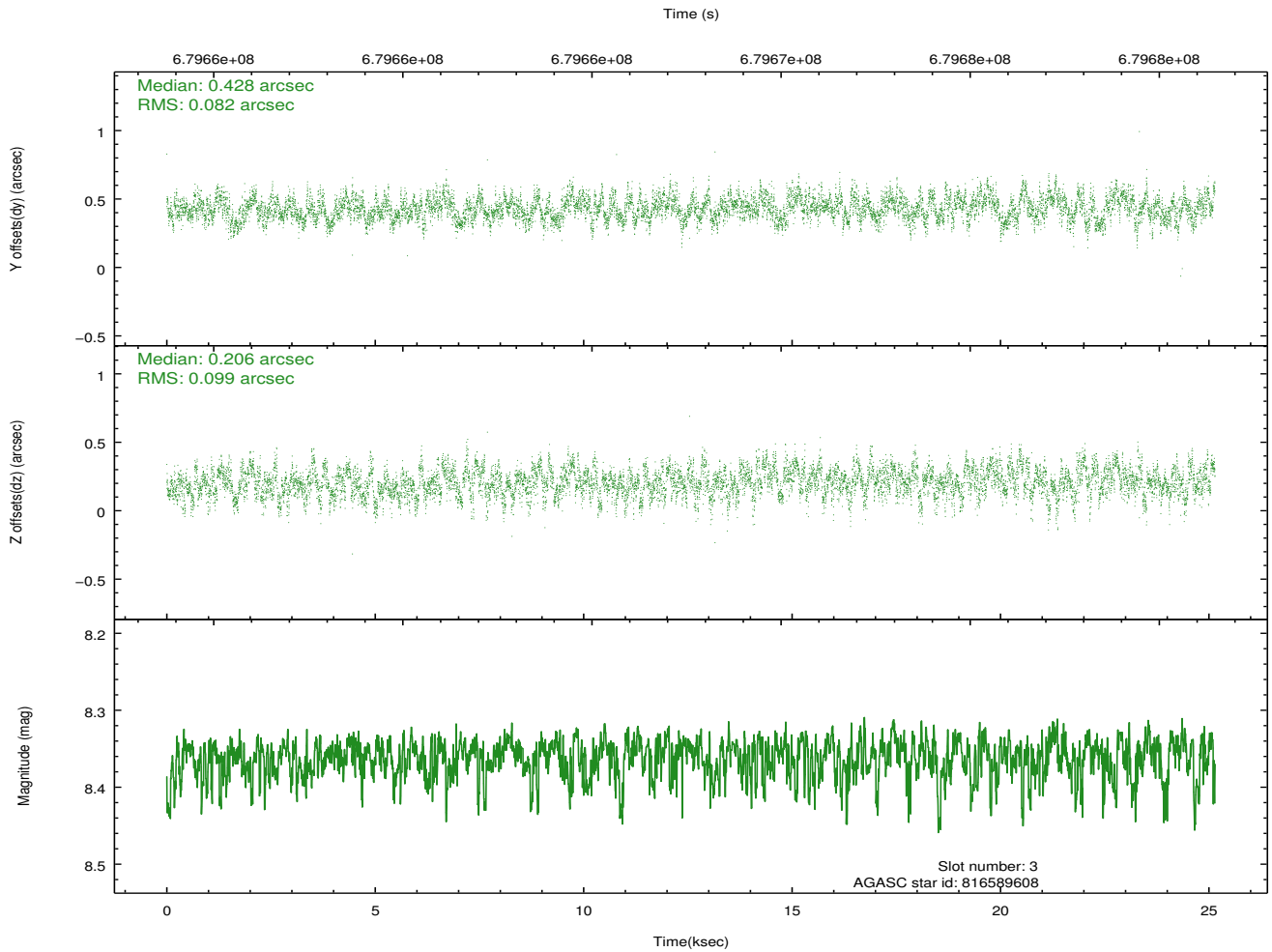
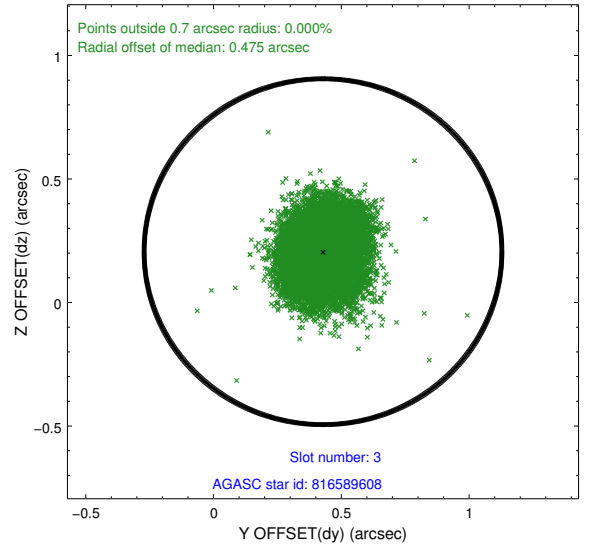
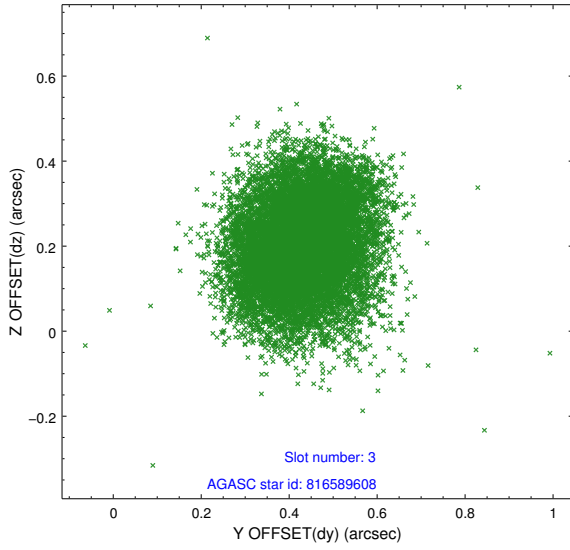
Slot Statistics

pt	status	used	id	mag	n_pts	frac_pts	med_dy	med_dz	dr1	dr2	ra	dec	mean_y	mea
0	FID		HRC-I-2	7.08	6130	1.000	0.069	-0.153	0.016	0.029	0.000000	0.000000	838.70	-1309
1	FID		HRC-I-3	7.12	6130	1.000	-0.420	0.021	0.015	0.025	0.000000	0.000000	-1202.91	996
2	FID		HRC-I-4	7.06	6133	1.000	0.468	0.044	0.014	0.023	0.000000	0.000000	1268.93	995
3	GUIDE	used	816589608	8.36	12260	1.000	0.428	0.206	0.137	0.220	253.659974	-21.879606	-735.12	-1377
4	GUIDE	used	816719320	9.08	12250	1.000	-0.052	0.281	0.166	0.293	254.507879	-21.620199	-1997.74	1326
5	GUIDE	used	816723288	7.81	12265	1.000	-0.093	0.070	0.094	0.156	254.188785	-21.796597	-1244.22	341
6	GUIDE	used	816725024	8.40	12259	1.000	-0.262	-0.130	0.124	0.206	254.689455	-21.769583	-1535.42	1992
7	GUIDE	used	892600464	8.87	12254	1.000	-0.023	-0.421	0.158	0.254	254.248920	-22.576721	1521.17	870

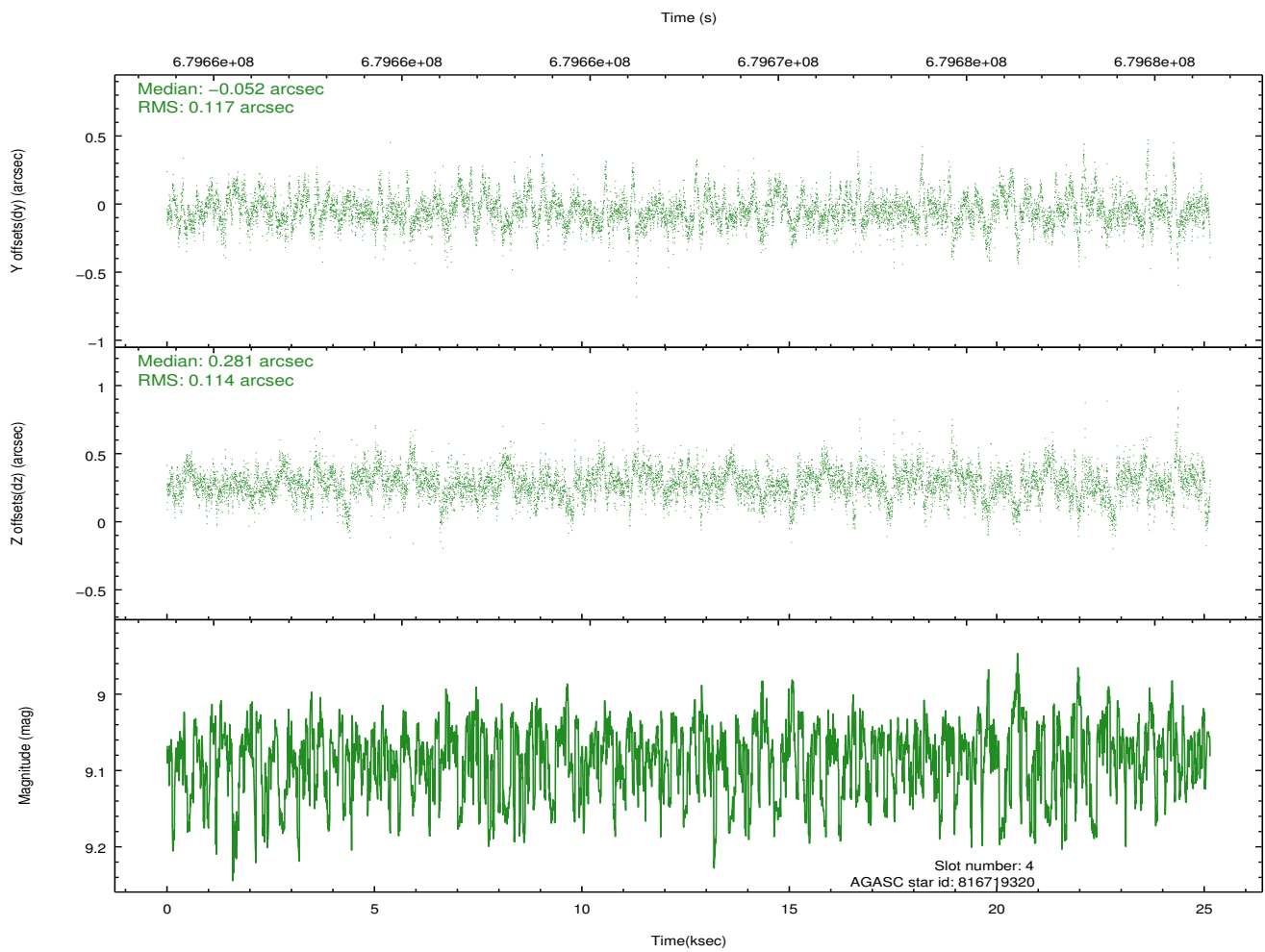
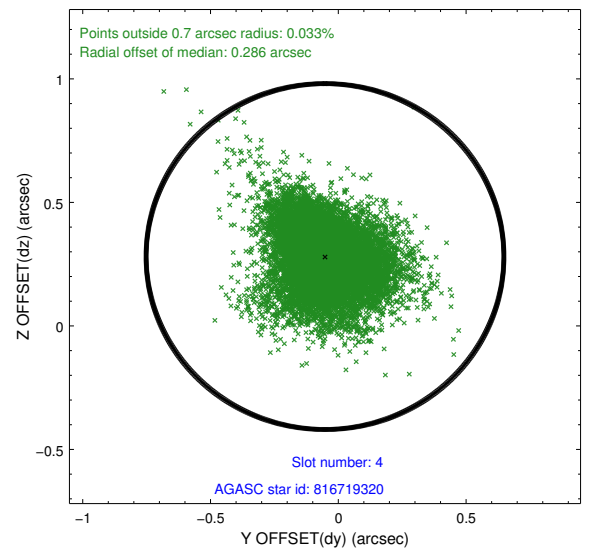
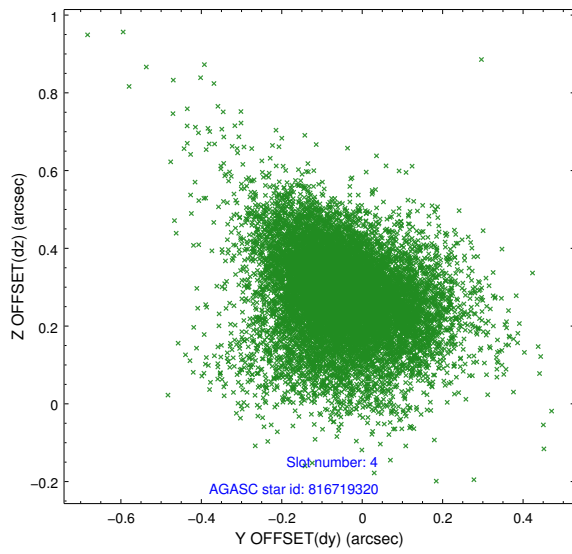
∞

2.4 Star Slots

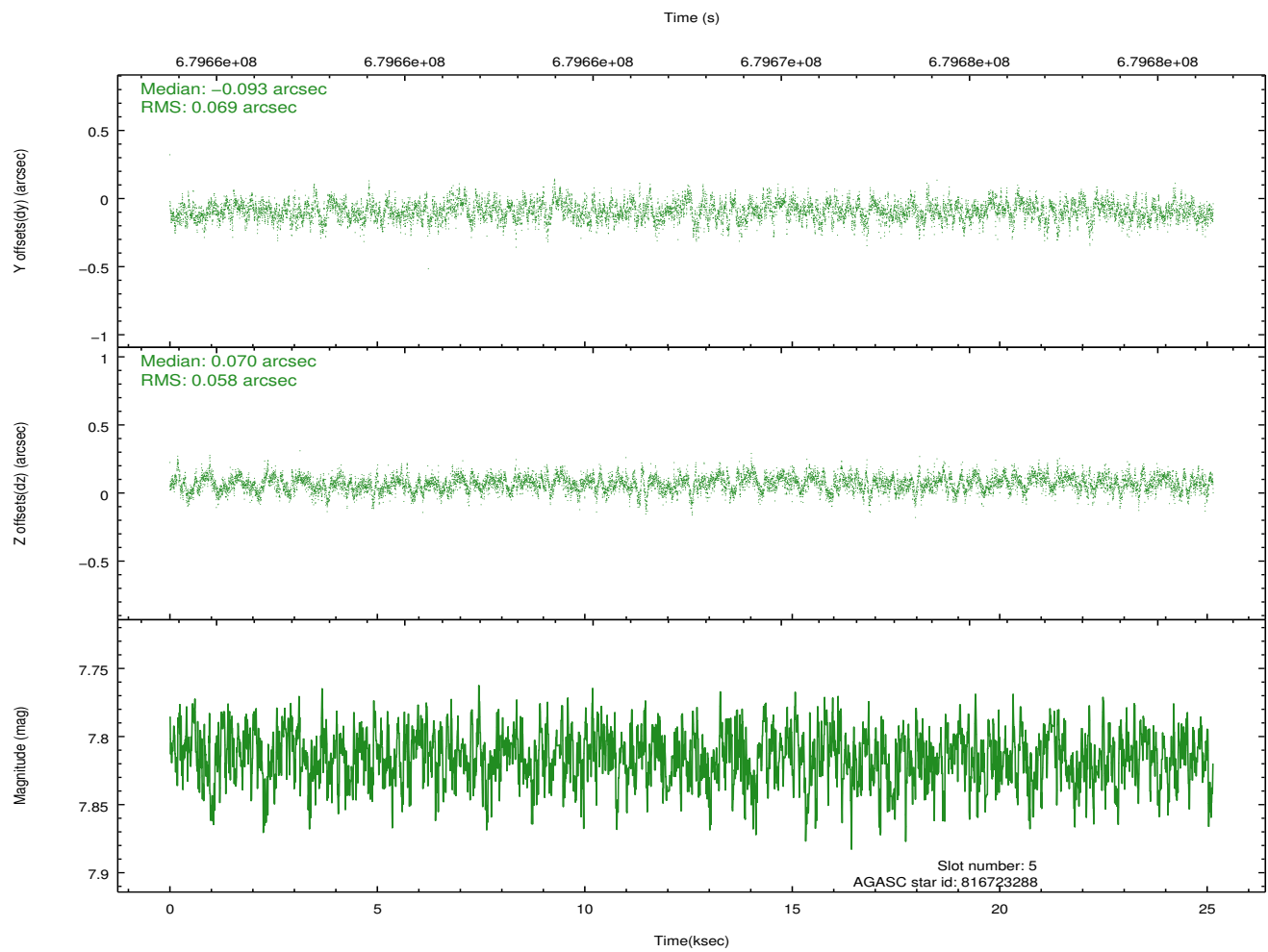
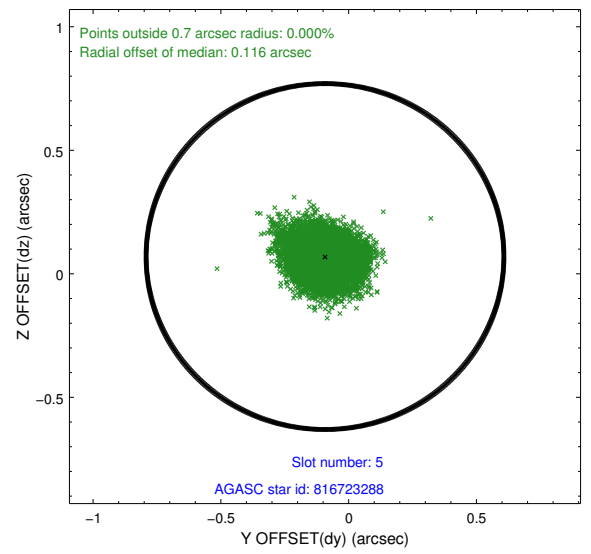
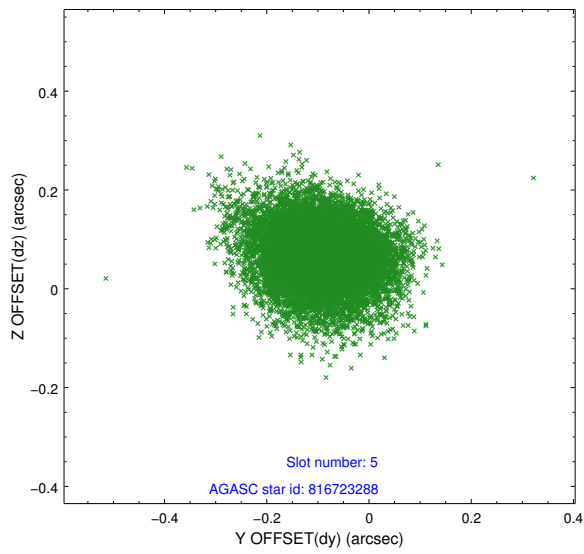
2.4.1 Slot 3



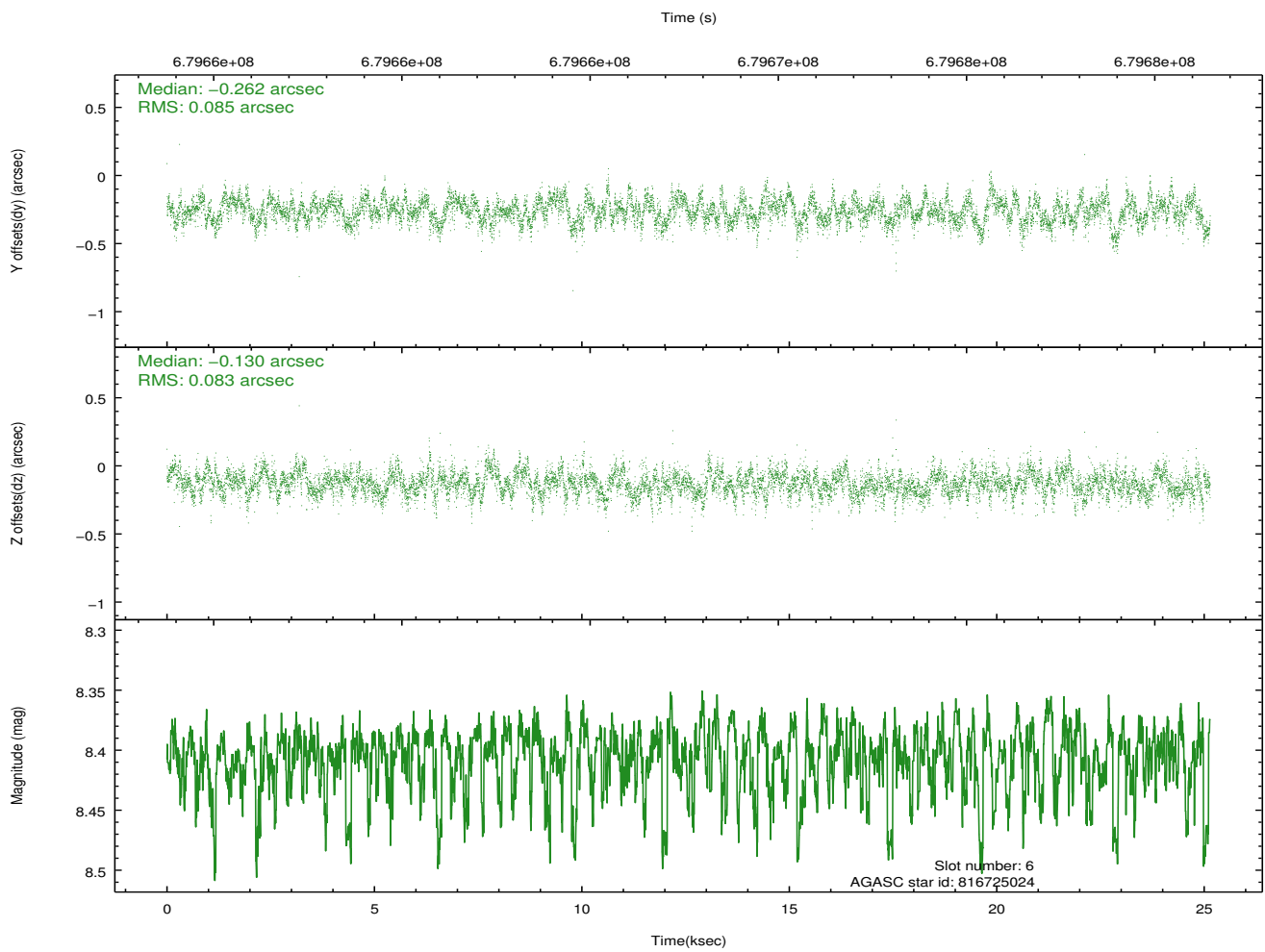
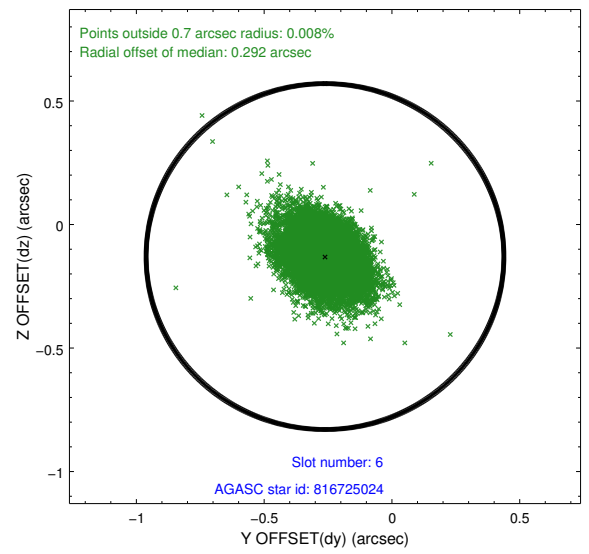
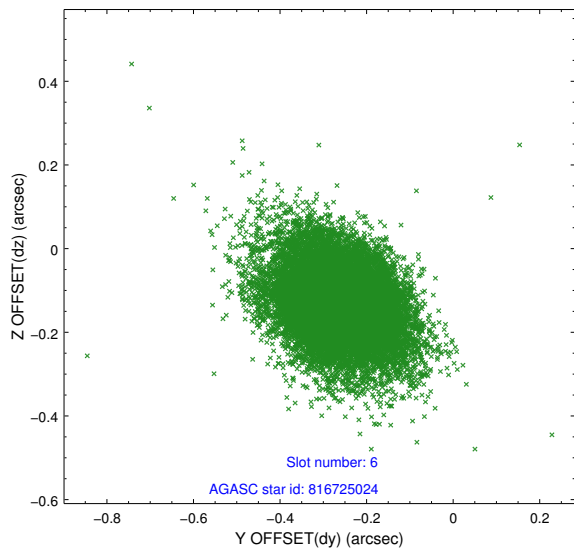
2.4.2 Slot 4



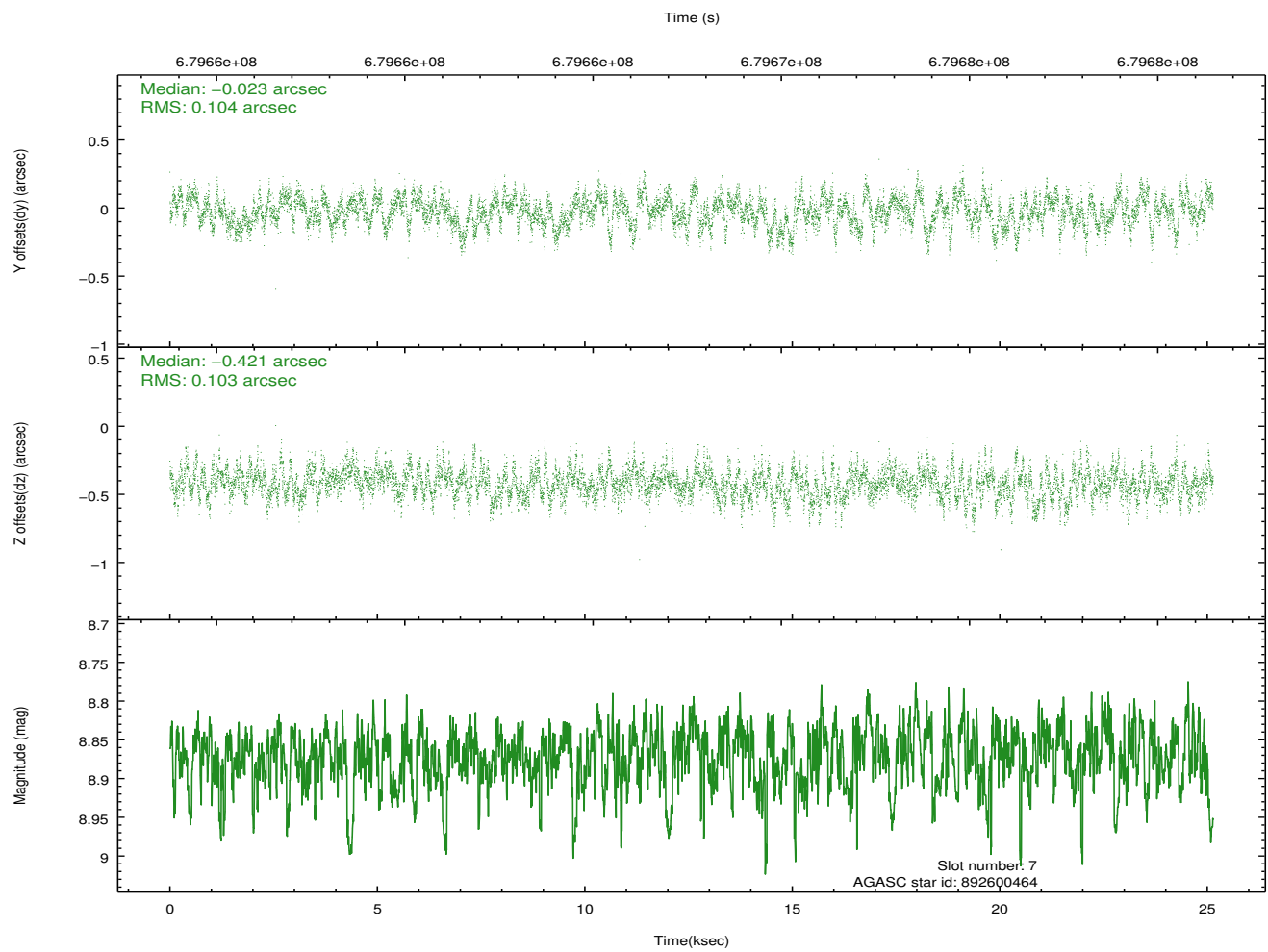
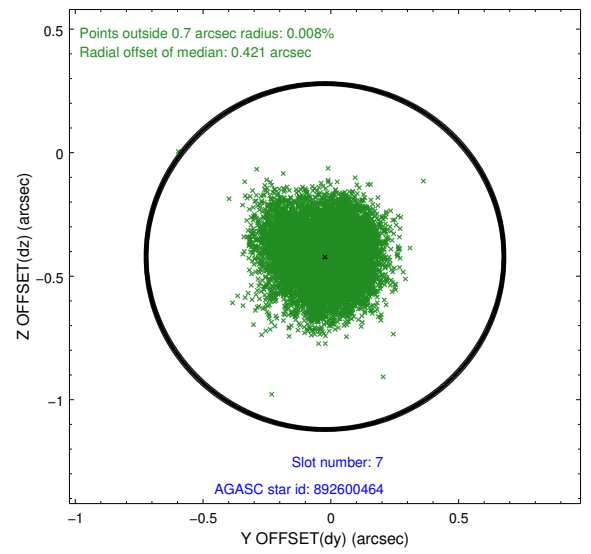
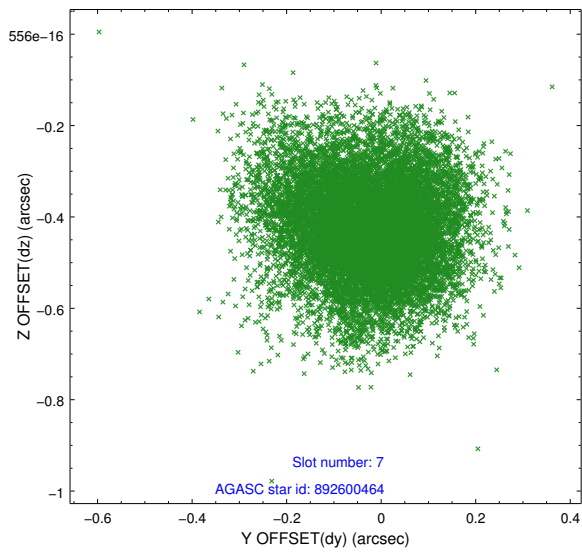
2.4.3 Slot 5



2.4.4 Slot 6

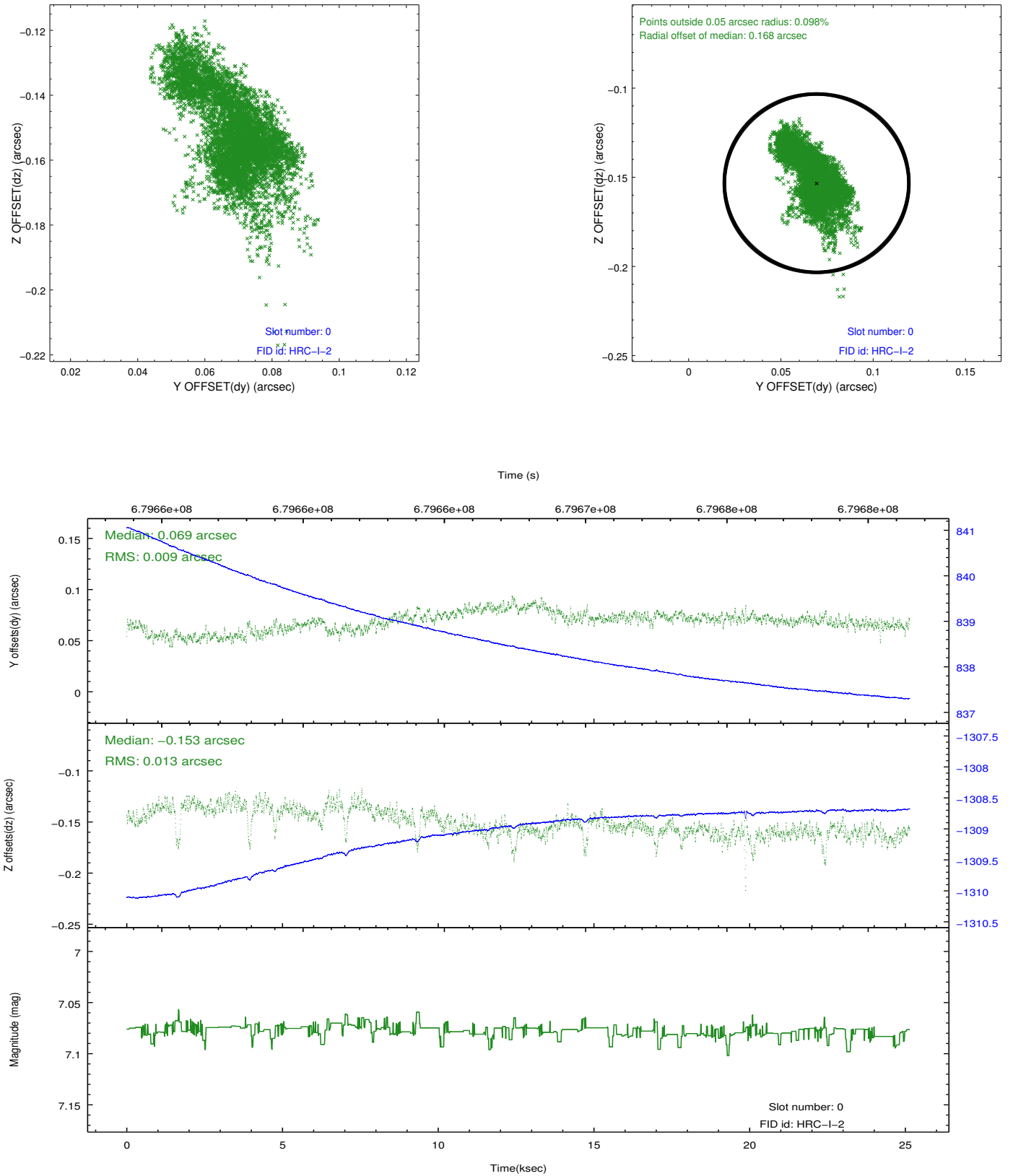


2.4.5 Slot 7

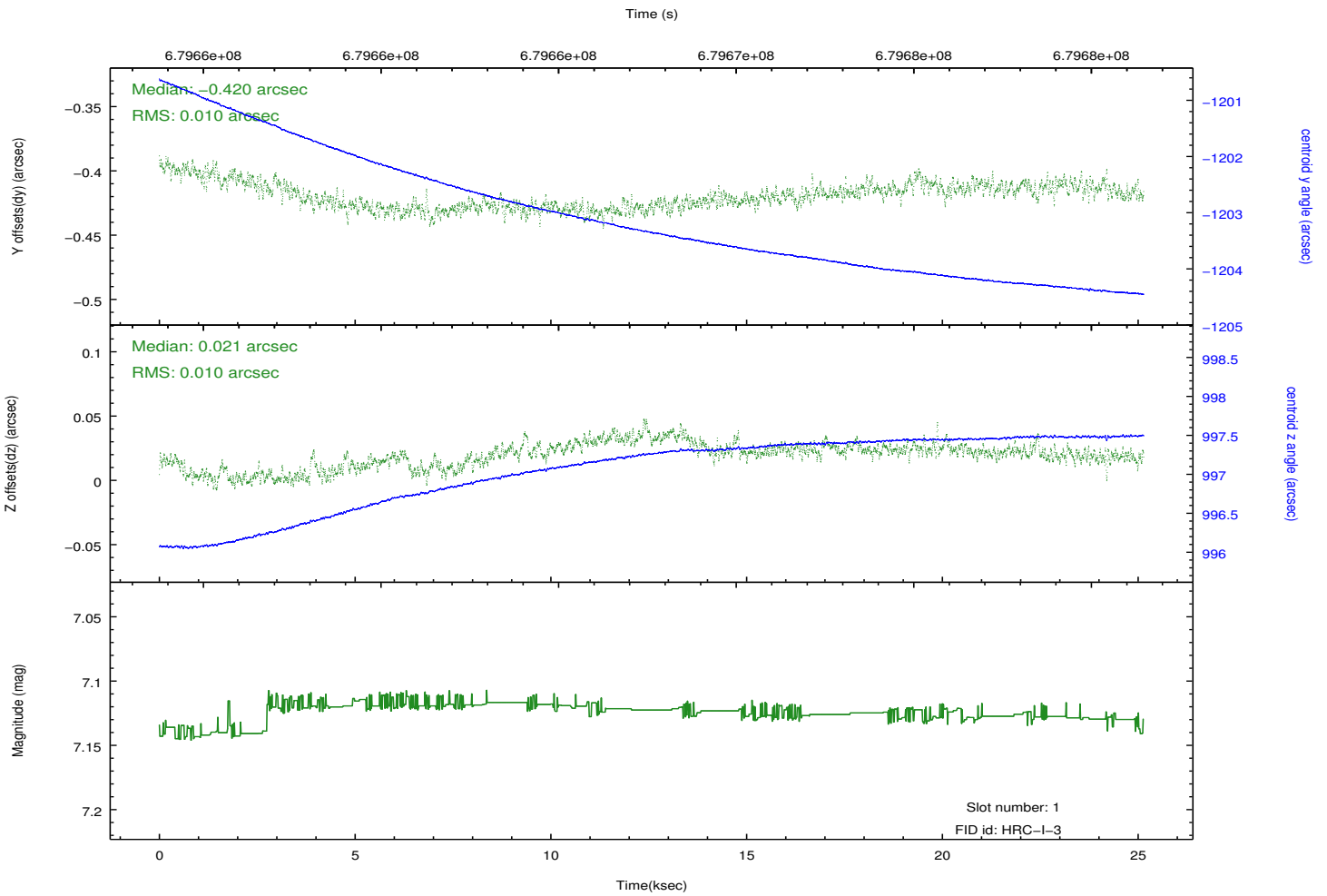
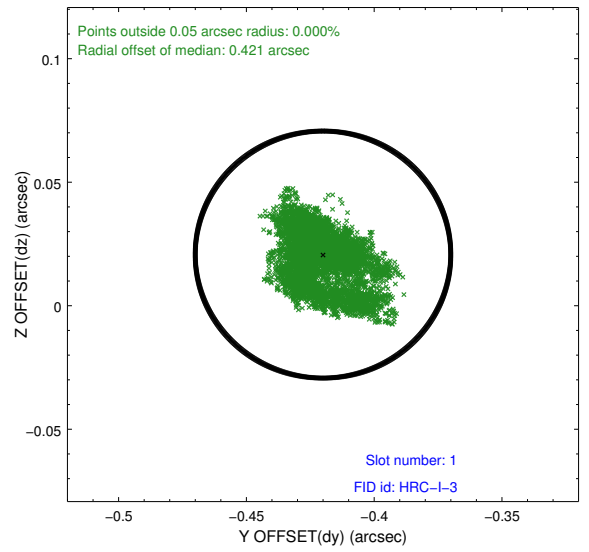
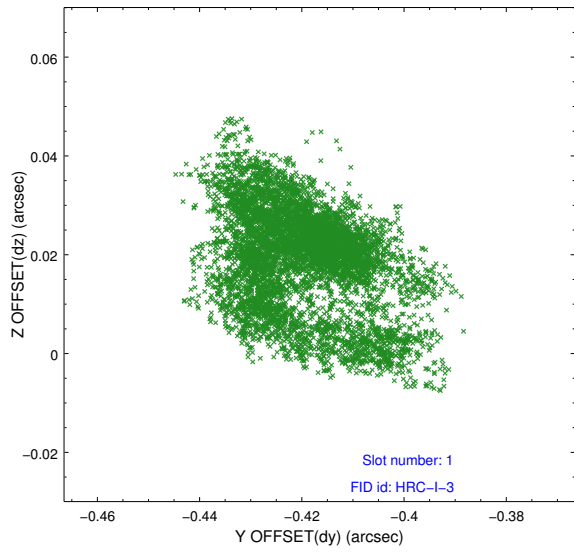


2.5 FID Slots

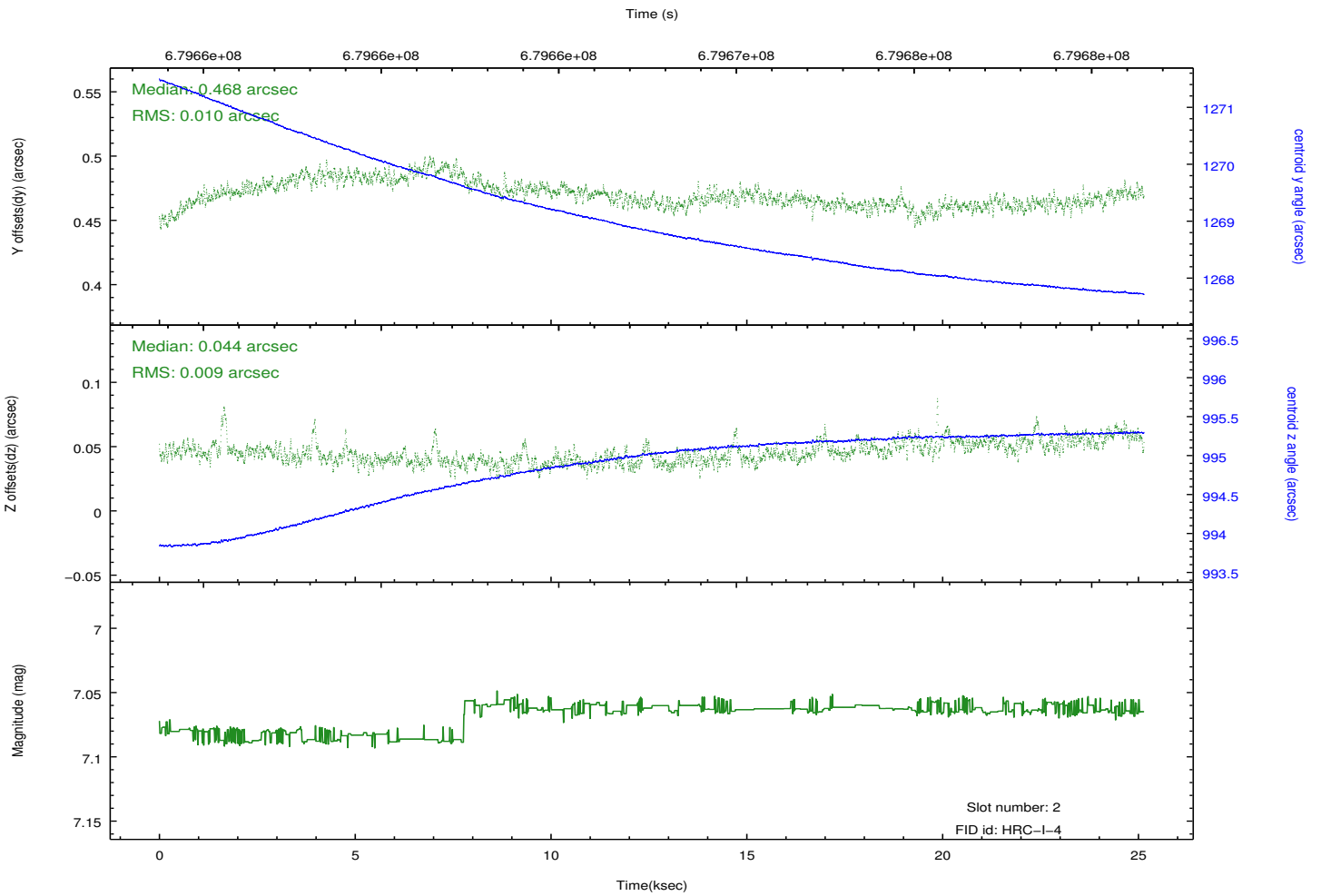
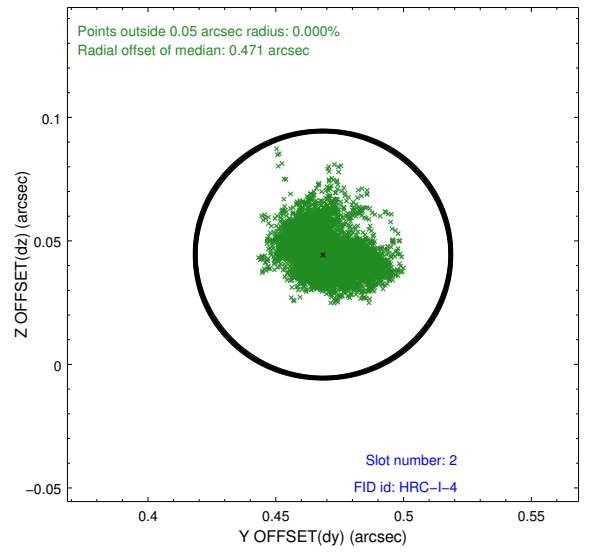
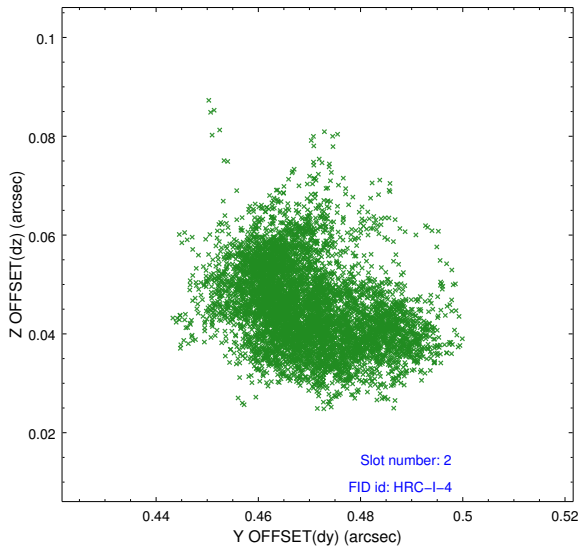
2.5.1 Slot 0



2.5.2 Slot 1



2.5.3 Slot 2



A Summary

A.1 Status

V&V Scientist	Jen Lauer
V&V Date (YYYY-MM-DD)	2019.07.17
V&V Edition	1
V&V Disposition and Status	OK
V&V Charge Time	25.144532750487

A.2 Comments

This is a moving target. Users will need to run `sso_freeze` or similar software to position the events in the reference frame of the target.

=====

Joint Proposal: CXO-XMM. Window constraint met.