

V&V Reference Report

L2 ASCDS Version : 10.8

Observation 22150 - L2 Version 1
Chandra X-Ray Center

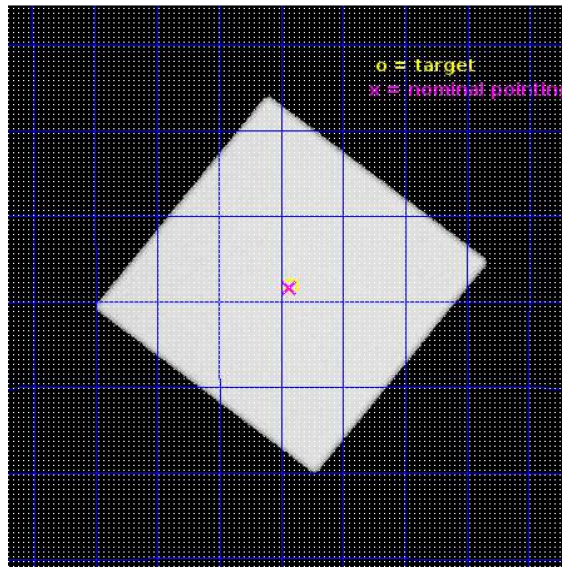
L2 Processing Date : Jul 19 2019

Contents

1	Front	2
2	OBI	3
2.1	OBI	3
2.1.1	Images	3
2.1.2	Parameters	4
2.1.3	Events	4
2.2	Compared Parameters	5
2.3	Aspect	6
2.4	Star Slots	9
2.4.1	Slot 3	9
2.4.2	Slot 4	10
2.4.3	Slot 5	11
2.4.4	Slot 6	12
2.4.5	Slot 7	13
2.5	FID Slots	14
2.5.1	Slot 0	14
2.5.2	Slot 1	15
2.5.3	Slot 2	16
A	Summary	17
A.1	Status	17
A.2	Comments	17

1 Front

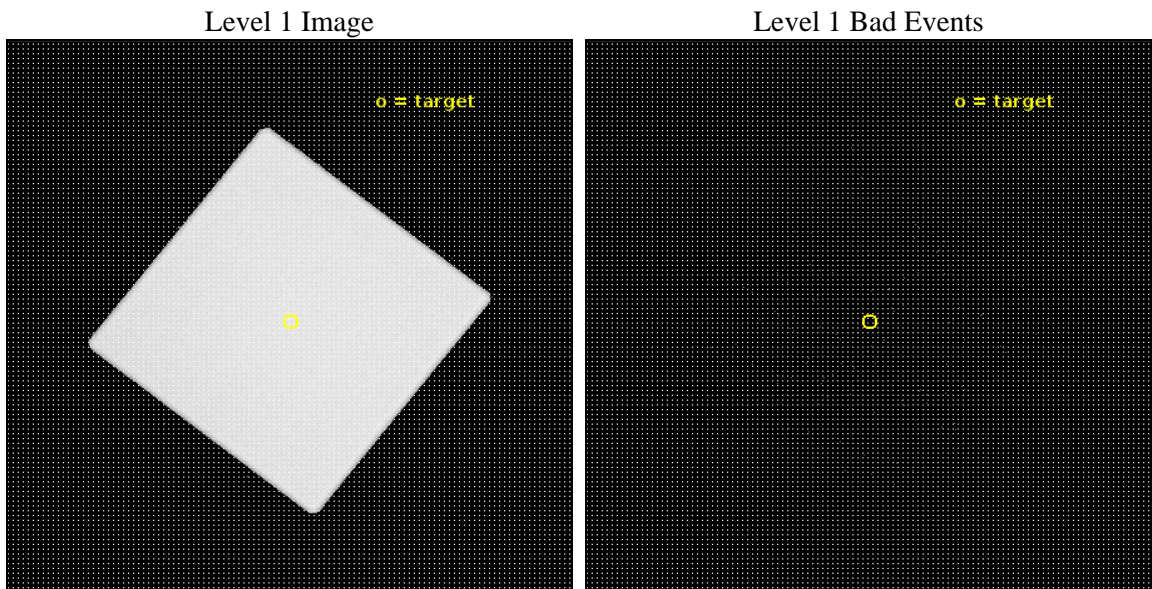
seq_num	100180	Sequence number
obs_id	22150	Observation id
title	Is X-ray Aurora Produced by Magnetic Unloading?	Proposal title
observer	William Dunn	Principal investigator
object	Jupiter	Source name
ra_targ	253.855456	Observer's specified target RA [deg]
dec_targ	-22.135664	Observer's specified target Dec [deg]
ra_nom	253.85821206518	Nominal RA [deg]
dec_nom	-22.139681670375	Nominal Dec [deg]
roll_nom	263.0592869359	Nominal Roll [deg]
revision	1	Processing version of data
ontime	25178.229625344	[s]
livetime	24748.57746524	Ontime multiplied by DTCOR
l2events	3005168	Number of level 2 events



2 OBI

2.1 OBI

2.1.1 Images



2.1.2 Parameters

obi_num	0	Obi number	sched_exp_time	25000.000000	[s] Scheduled observation exposure time
ascdsver	10.8	Processing system revision	ontime	25179.382763386	[s]
caldbver	4.8.3.1	 	l1events	4090759	Number of level 1 events
date	2019-07-19T13:42:56	Date and time of file creation			
revision	1	Processing version of data			

2.1.3 Events

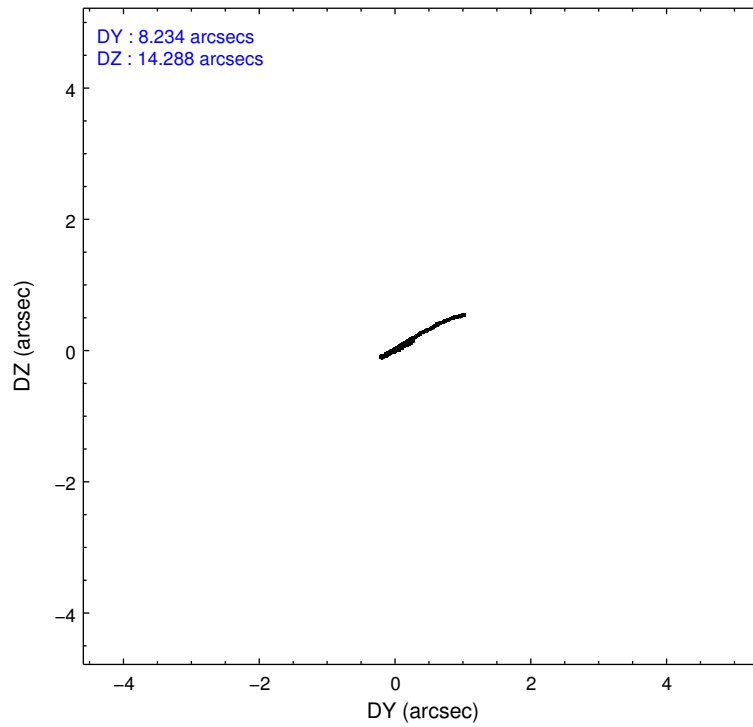
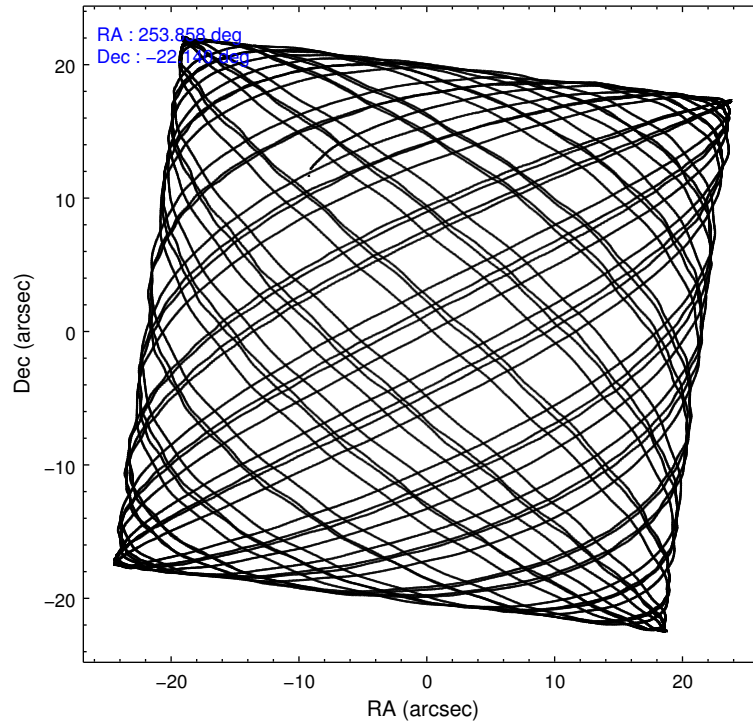
Level 1 Events

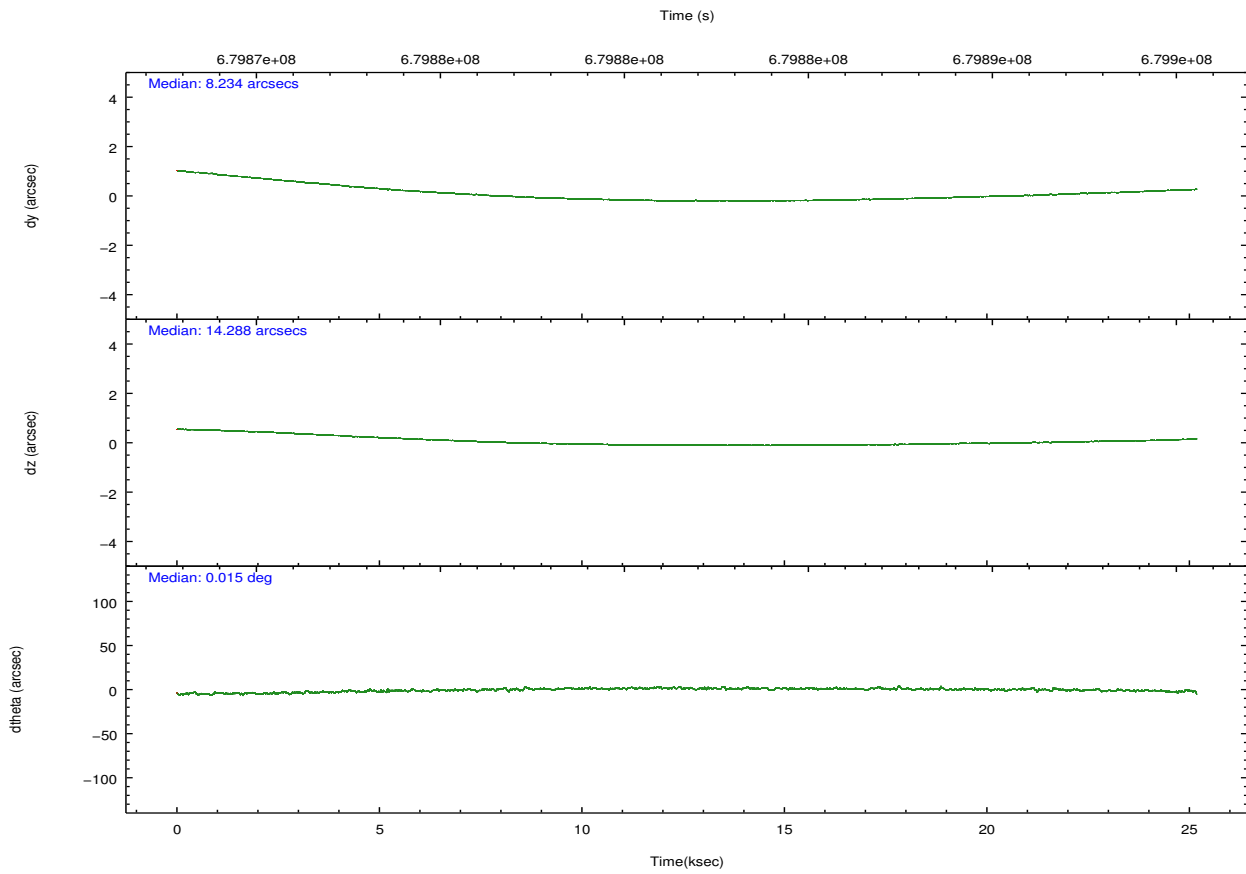
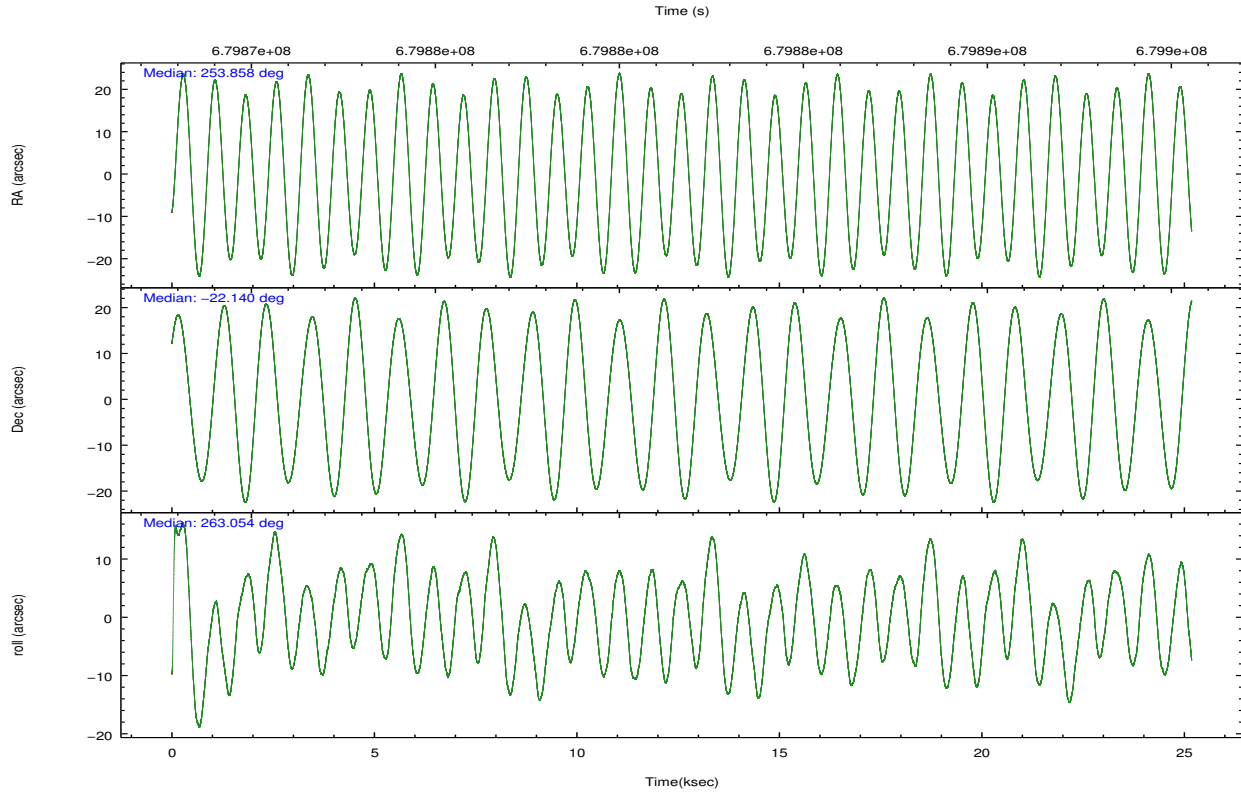
	segment 0
level 1 events	4090759
rejected events	125361
rejected %	3%

2.2 Compared Parameters

Parameter	Planned	Actual	Parameter	Planned	Actual
Instrument	HRC	HRC	Obspar format version number	7	7
Detector	HRC-I	HRC-I	Obspar file type	PREDICTED	ACTUAL
Grating	NONE	NONE	Obspar update status	NONE	UPDATED
Data mode	OBSERVING	OBSERVING			
Observation mode	POINTING	POINTING			
[deg] Pointing RA	253.846012	253.8582120651792			
[deg] Pointing Dec	-22.114828	-22.13968167037493			
[deg] Pointing Roll	263.150194	263.0592869359044			
[s] Window start time (MET)	679869069.184000	679869069.184000			
[s] Window stop time (MET)	679894869.184000	679894869.184000			
[mm] SIM focus pos	-1.040293	-1.038866356238299			
[mm] SIM defocus	0	0.001426264420575141			
[mm] SIM translation stage pos	126.985494	126.9854943052878			
[mm] SIM translation stage offset	0	-5.413686238853188e-06			
[s] Observation start time (MET)	679869299.184000	679868341.69064			
Observation start date	2019-07-18T20:33:50	2019-07-18T20:19:01			
[s] Observation end time (MET)	679894299.184000	679895275.61726			
Observation end date	2019-07-19T03:30:30	2019-07-19T03:47:55			

2.3 Aspect





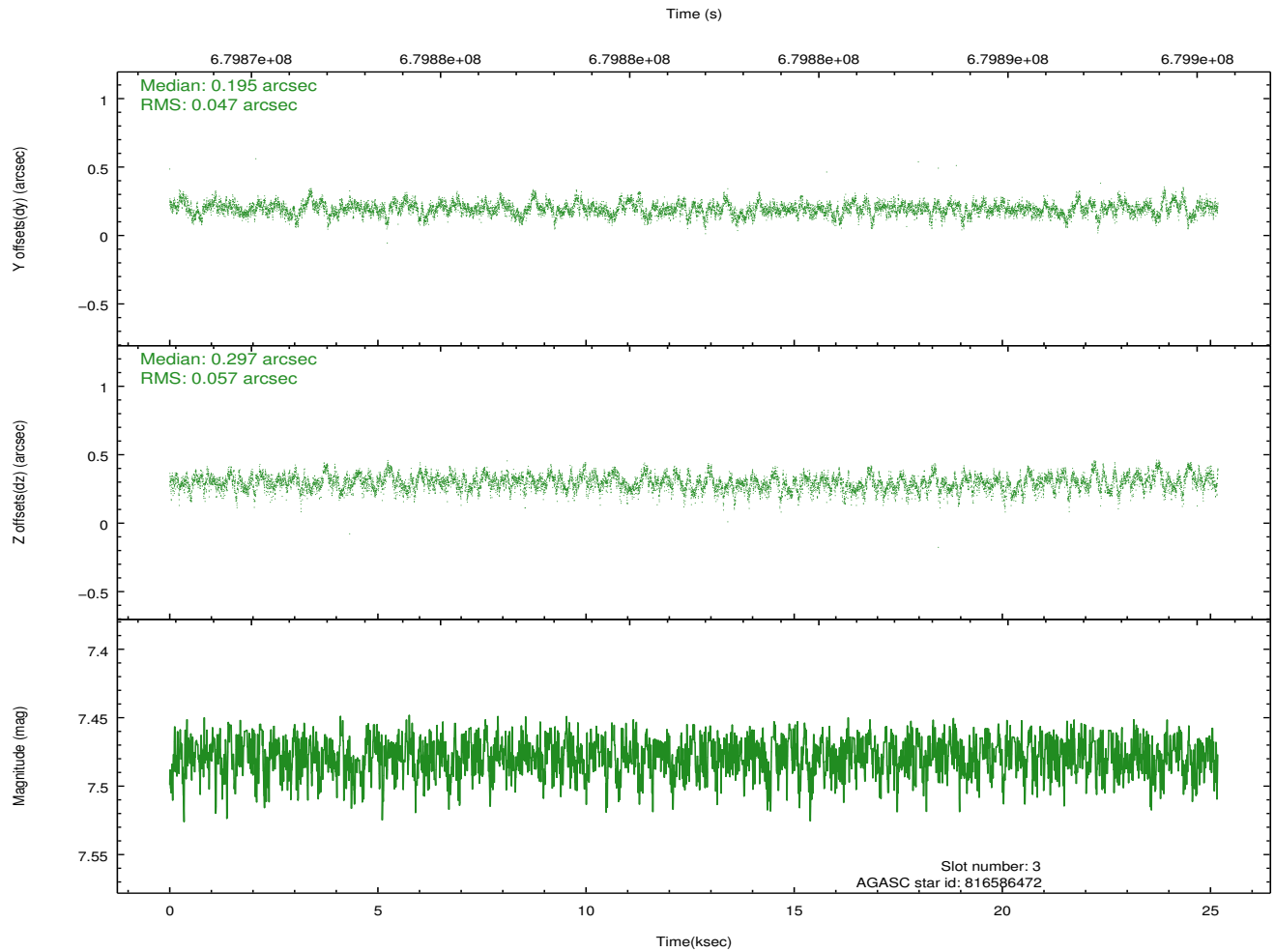
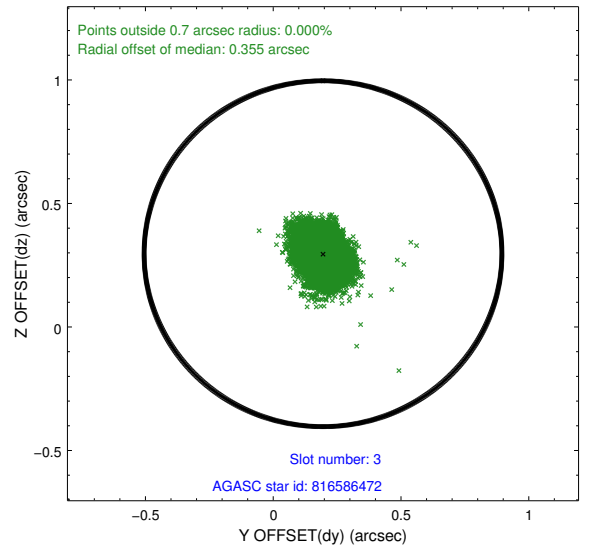
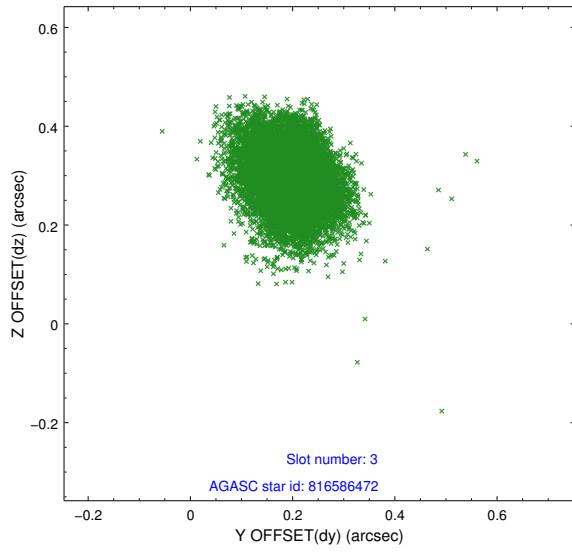
Slot Statistics

pt	status	used	id	mag	n_pts	frac_pts	med_dy	med_dz	dr1	dr2	ra	dec	mean_y	mea
0	FID		HRC-I-1	7.03	6142	1.000	-0.321	-0.237	0.011	0.022	0.000000	0.000000	-764.42	-1302
1	FID		HRC-I-2	7.06	6141	1.000	0.211	-0.069	0.012	0.023	0.000000	0.000000	848.62	-1304
2	FID		HRC-I-4	7.05	6141	1.000	0.226	0.213	0.008	0.019	0.000000	0.000000	1279.31	999
3	GUIDE	used	816586472	7.48	12283	1.000	0.195	0.297	0.077	0.128	253.313405	-21.674841	-1356.18	-1957
4	GUIDE	used	816589608	8.35	12282	1.000	0.246	0.034	0.121	0.198	253.659974	-21.879606	-765.55	-718
5	GUIDE	used	816719320	9.08	12268	1.000	-0.181	0.121	0.158	0.275	254.507879	-21.620199	-2025.69	1986
6	GUIDE	used	816723288	7.81	12279	1.000	-0.175	-0.053	0.106	0.173	254.188785	-21.796597	-1272.94	1001
7	GUIDE	used	892600464	8.85	12266	1.000	-0.080	-0.409	0.109	0.174	254.248920	-22.576721	1493.02	1528

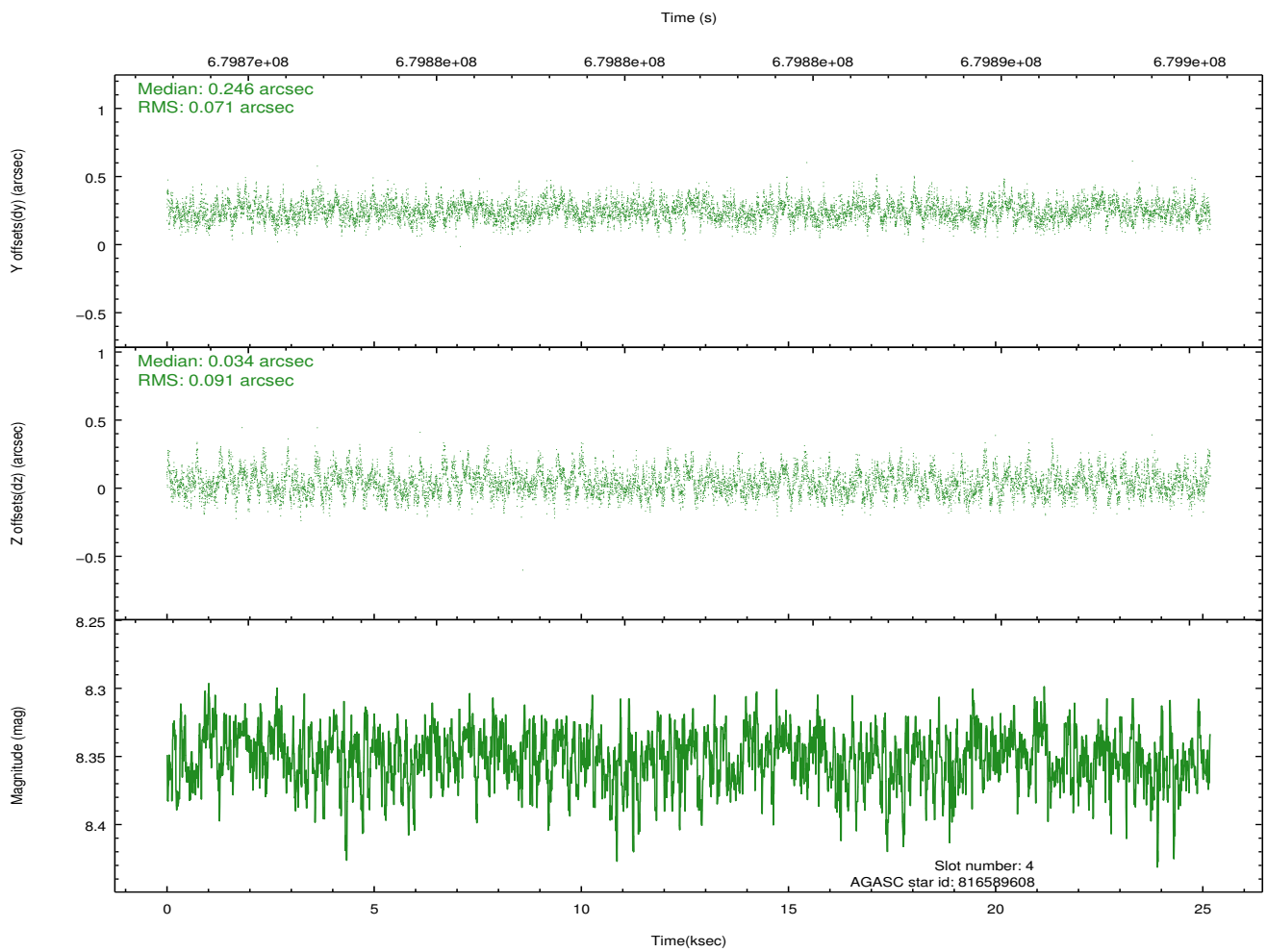
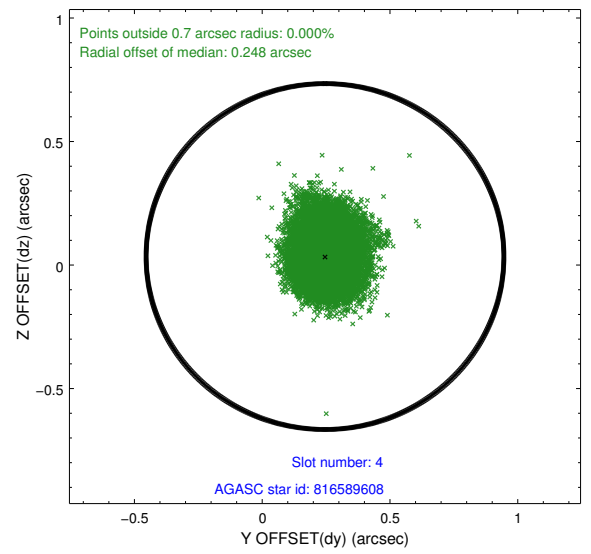
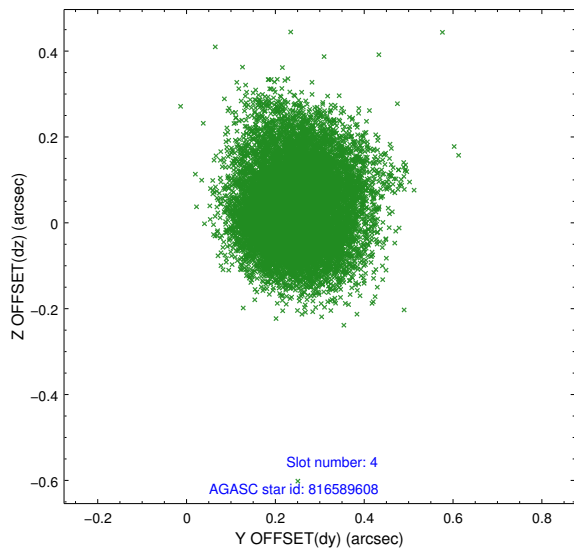
∞

2.4 Star Slots

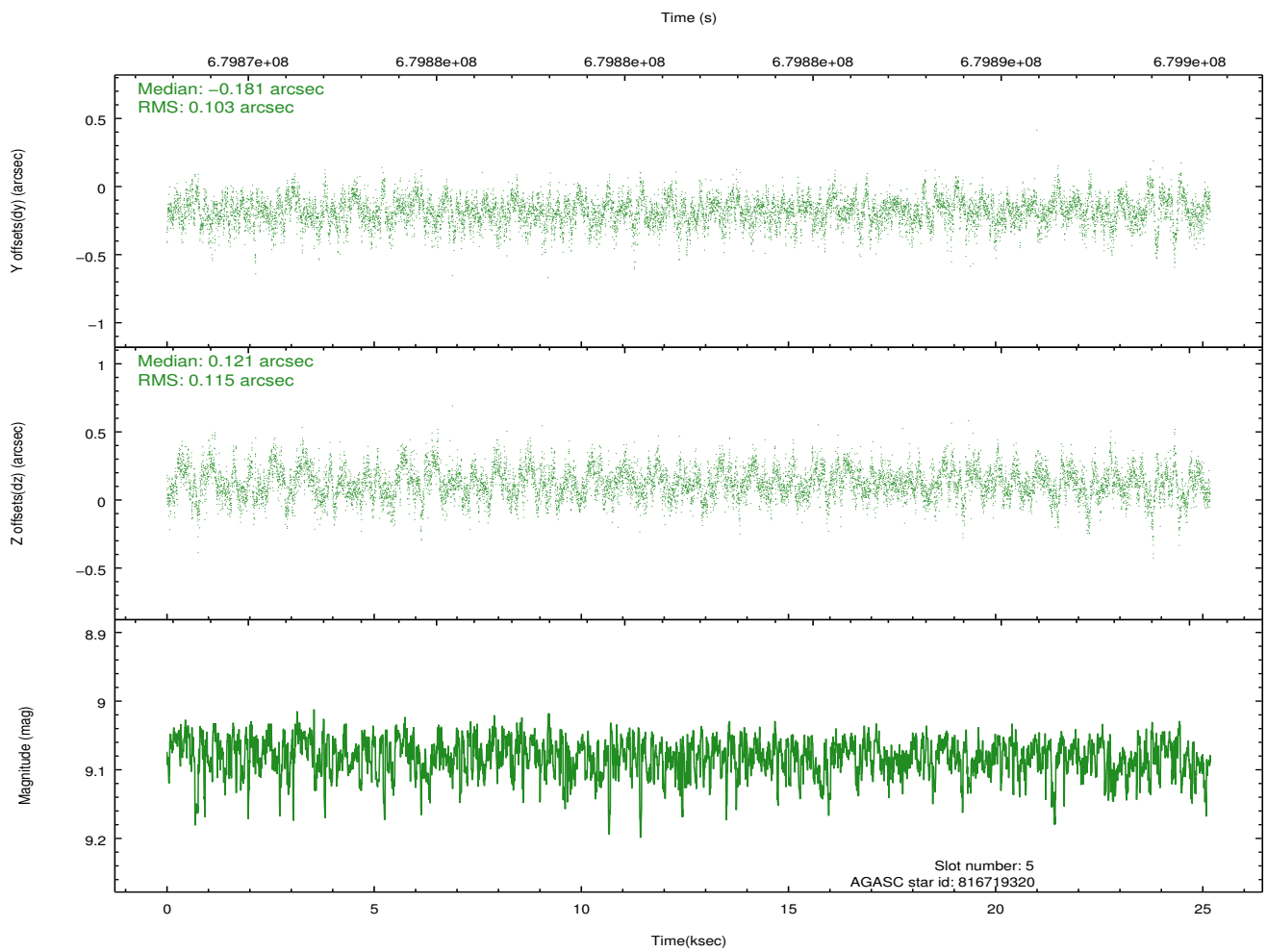
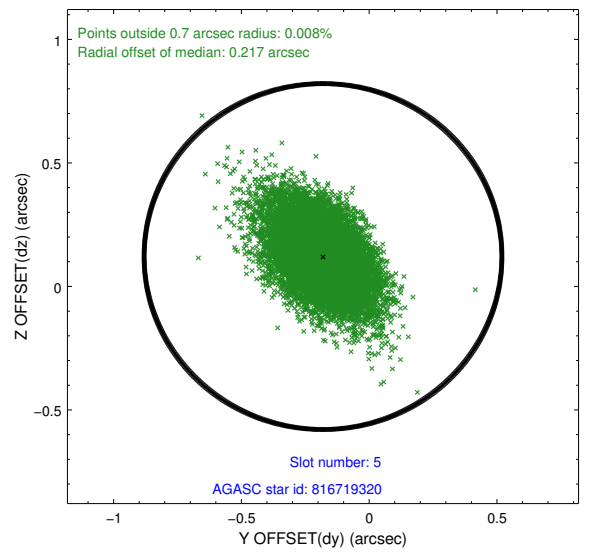
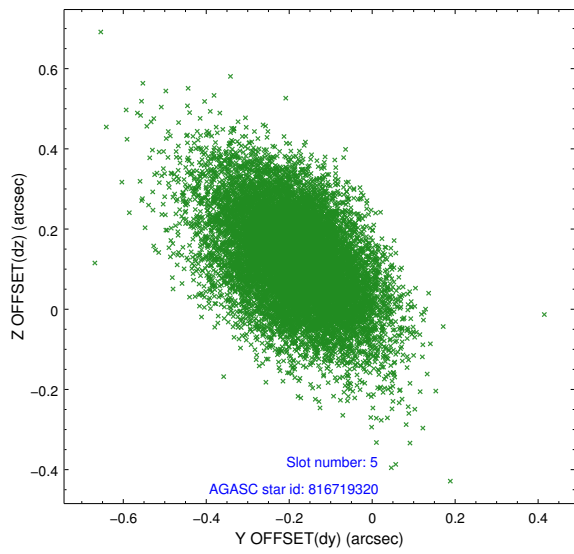
2.4.1 Slot 3



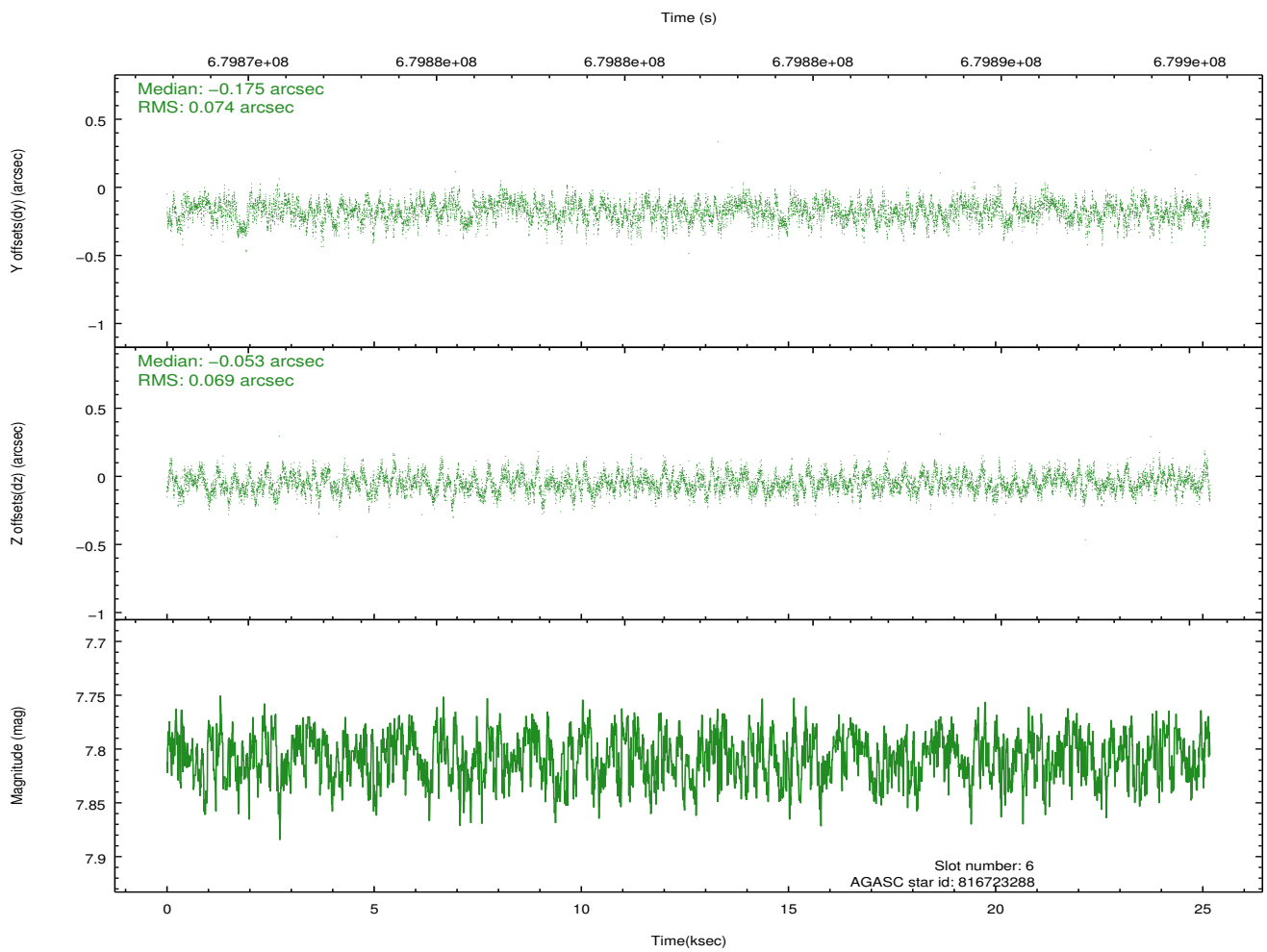
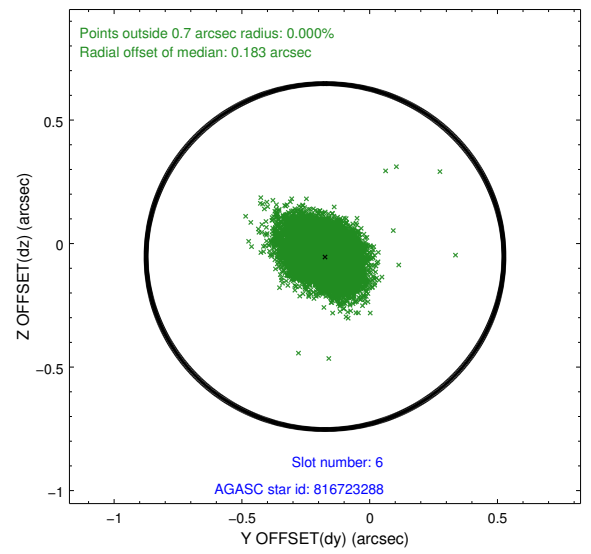
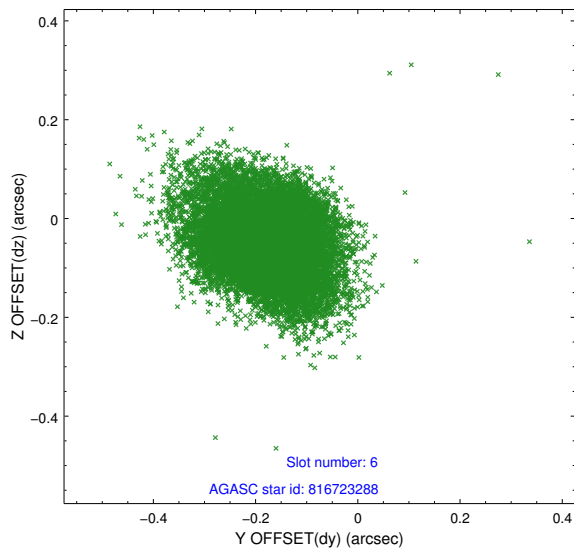
2.4.2 Slot 4



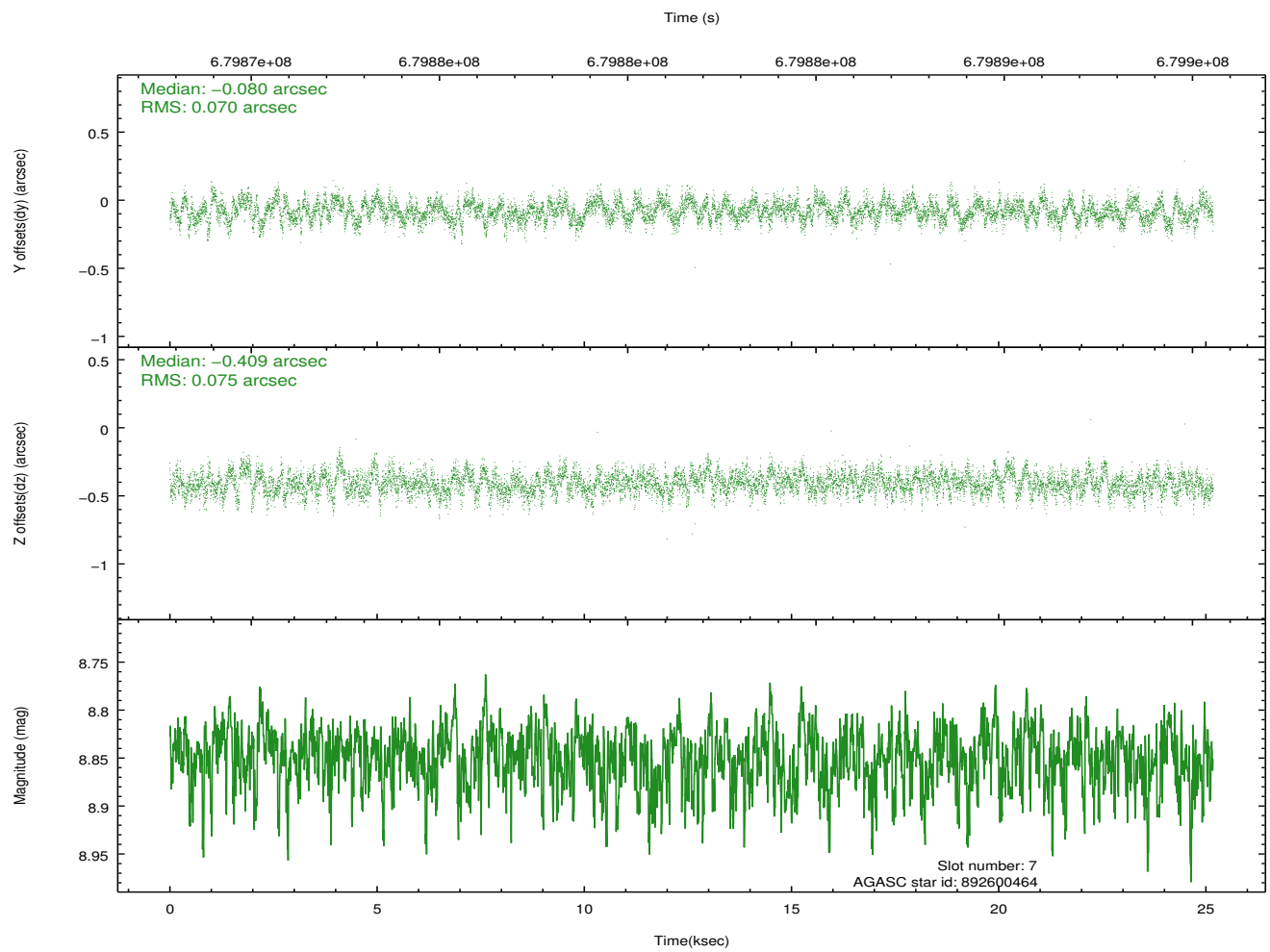
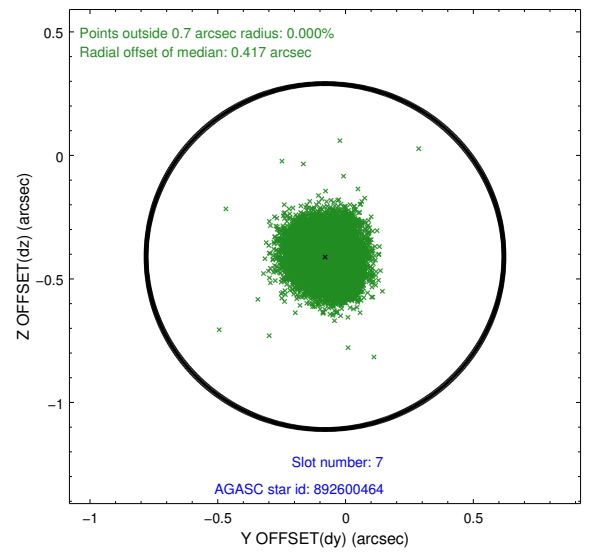
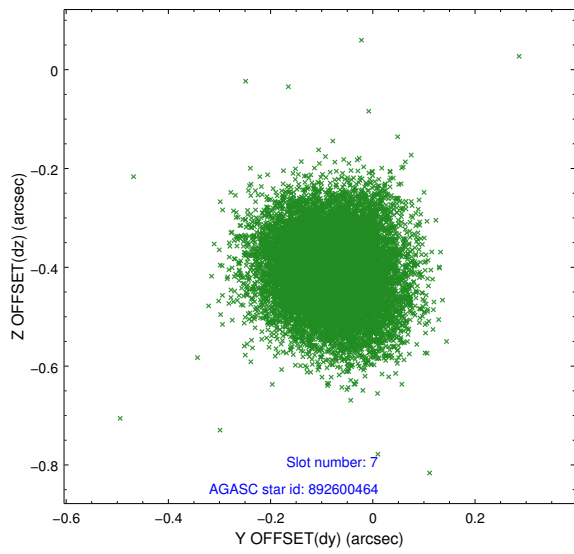
2.4.3 Slot 5



2.4.4 Slot 6

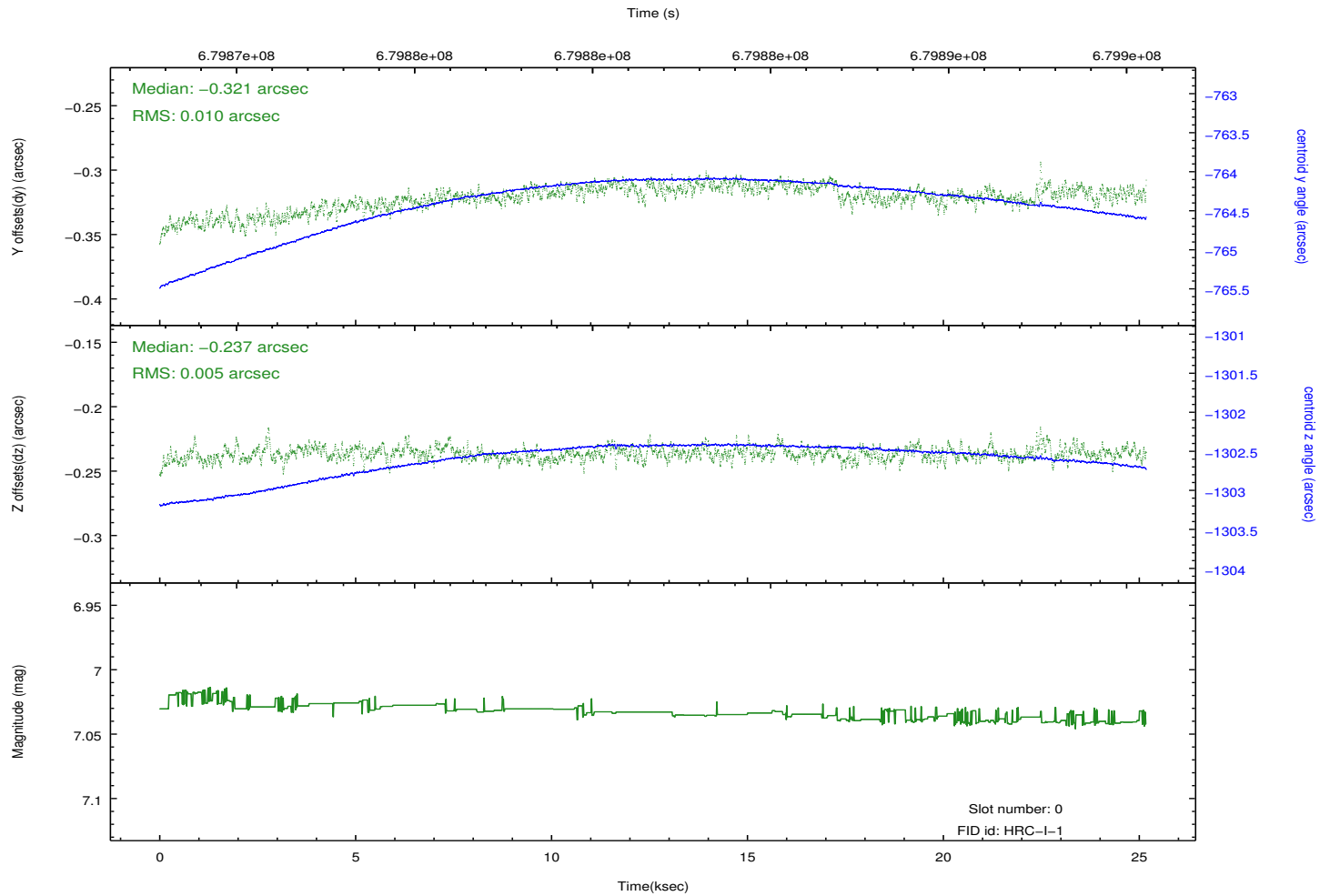
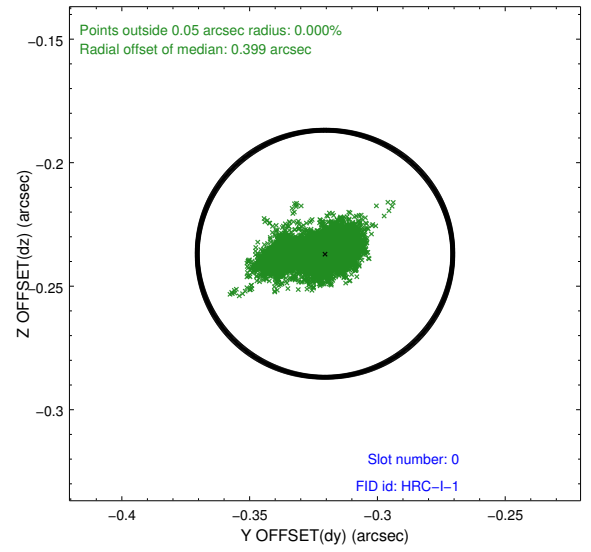
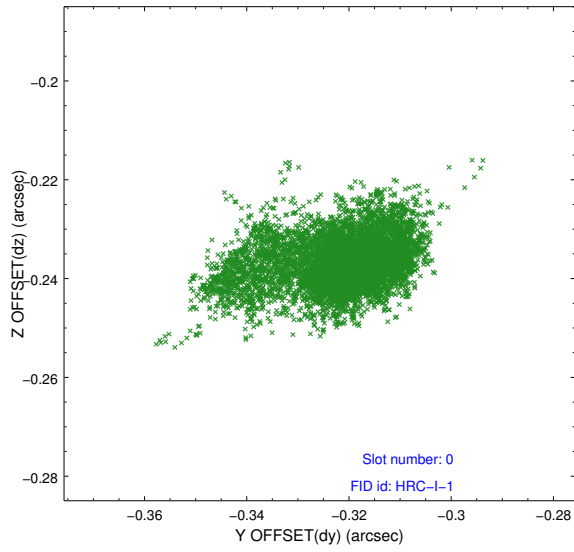


2.4.5 Slot 7

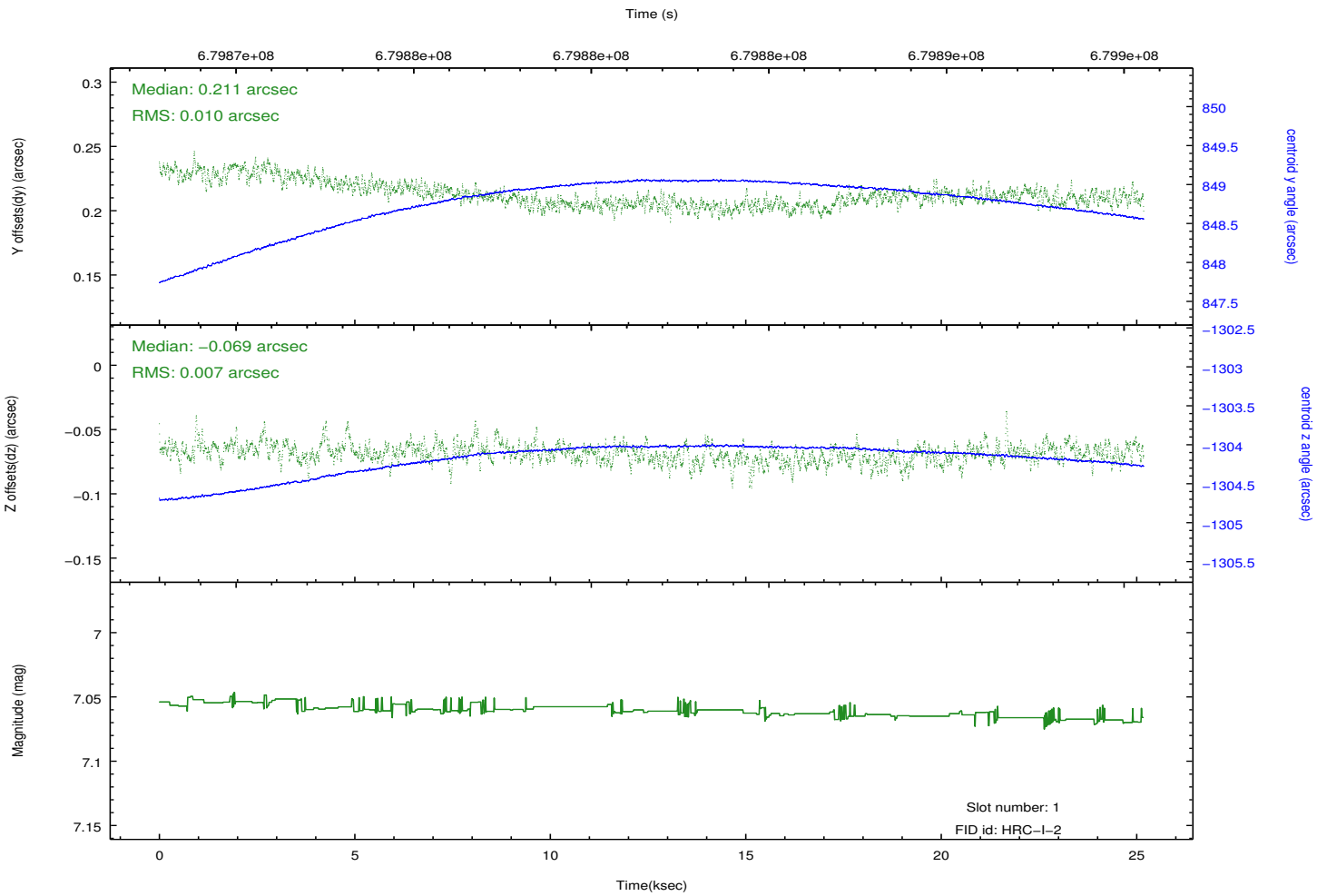
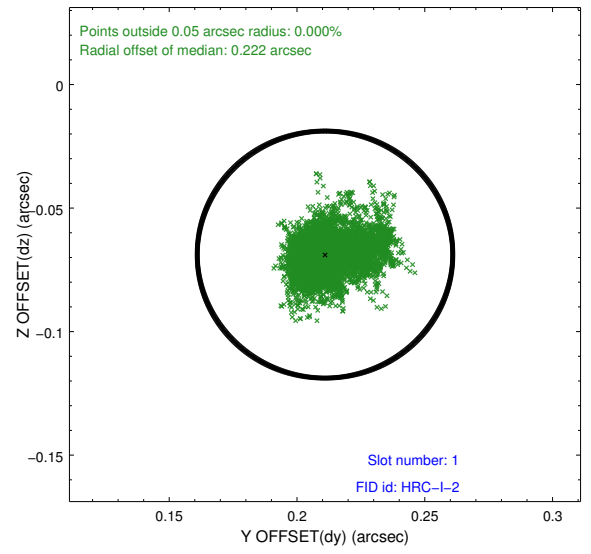
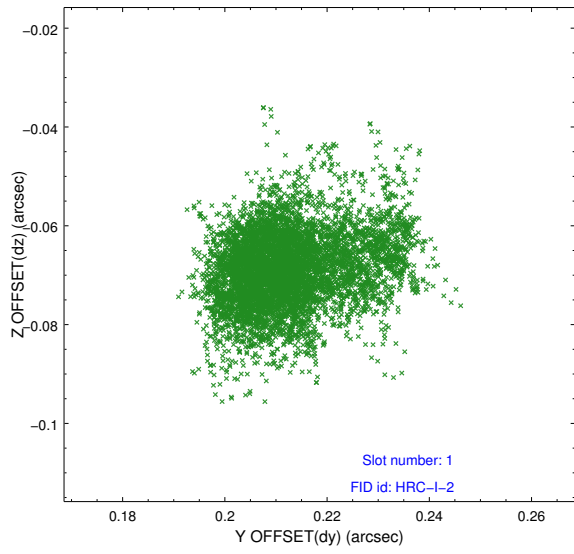


2.5 FID Slots

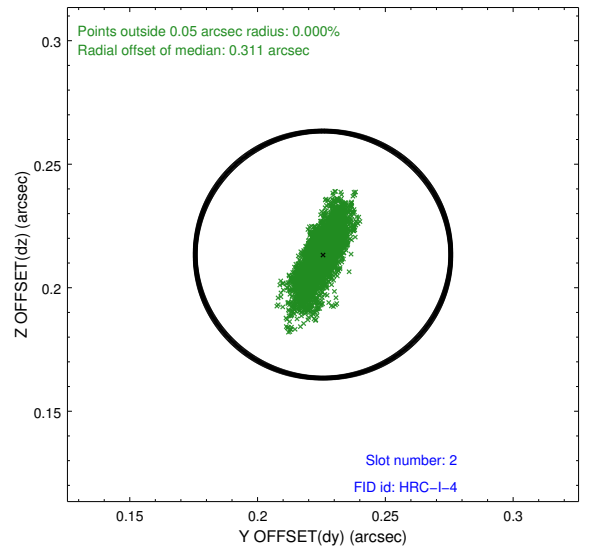
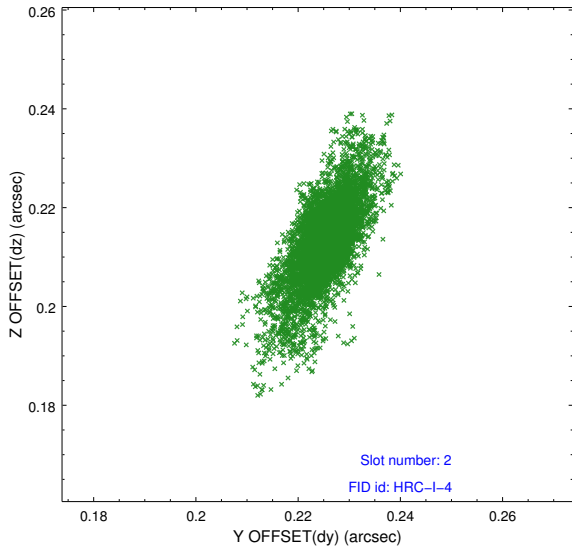
2.5.1 Slot 0



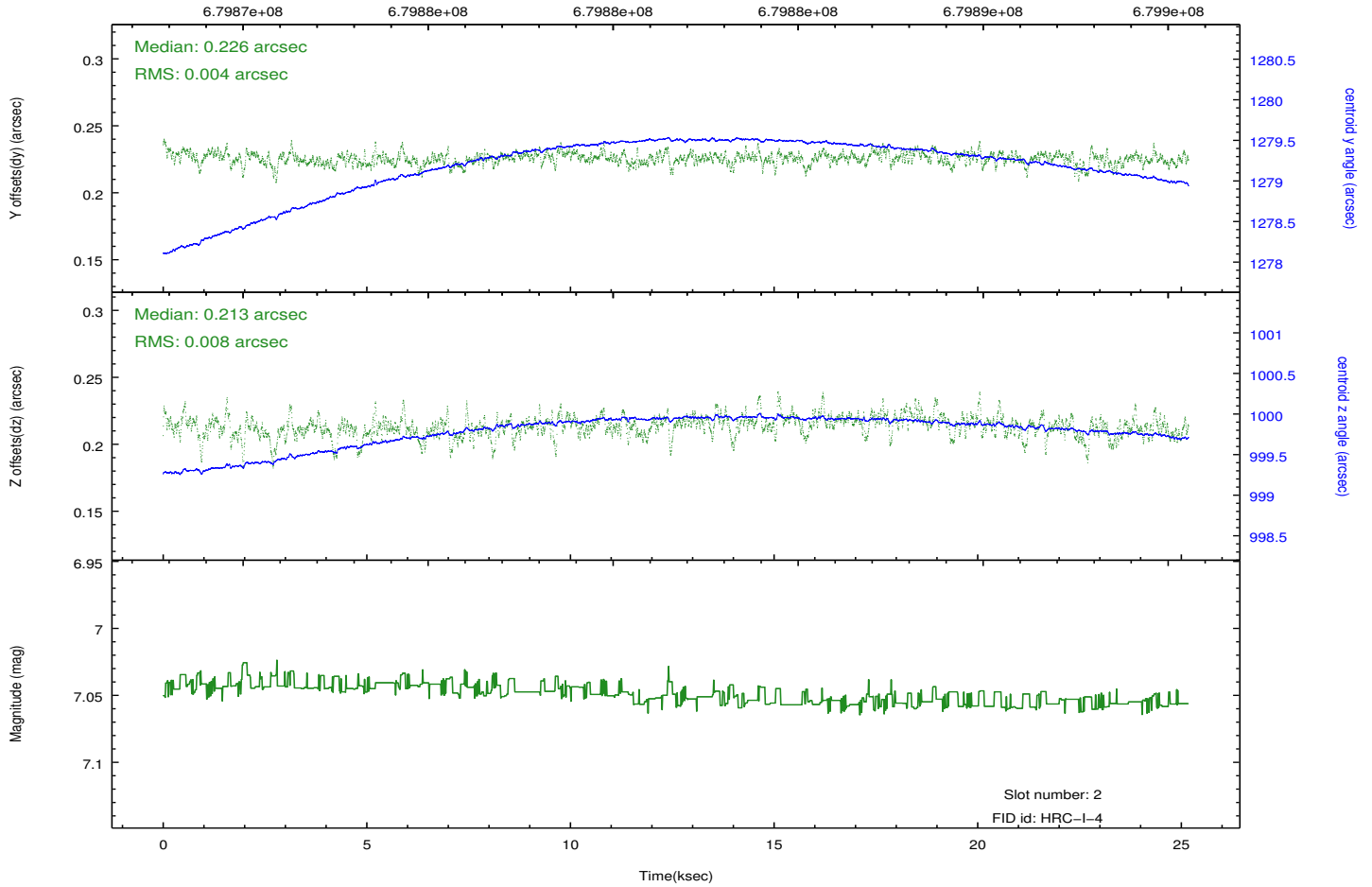
2.5.2 Slot 1



2.5.3 Slot 2



Time (s)



A Summary

A.1 Status

V&V Scientist	Beth Sundheim
V&V Date (YYYY-MM-DD)	2019.07.19
V&V Edition	1
V&V Disposition and Status	OK
V&V Charge Time	25.178229625344

A.2 Comments

Joint proposal with XMM.

Window constraint met.

This is an observation of a moving target. Users will need to run `sso_freeze` or similar software to position the events in the reference frame of the target.