

V&V Reference Report

L2 ASCDS Version : 10.8.1

Observation 23197 - L2 Version 1
Chandra X-Ray Center

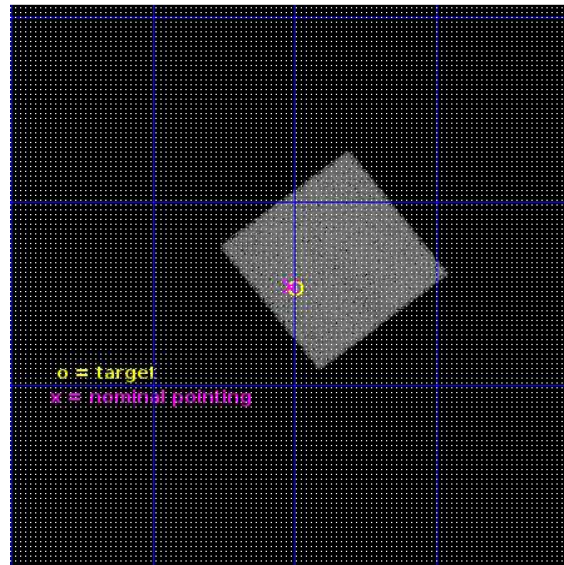
L2 Processing Date : Mar 12 2020

Contents

1	Front	2
2	OBI	3
2.1	OBI	3
2.1.1	Images	3
2.1.2	Bias	3
2.1.3	Parameters	4
2.1.4	Events	4
2.2	Compared Parameters	5
2.3	Aspect	6
2.4	Star Slots	9
2.4.1	Slot 3	9
2.4.2	Slot 4	10
2.4.3	Slot 5	11
2.4.4	Slot 6	12
2.4.5	Slot 7	13
2.5	FID Slots	14
2.5.1	Slot 0	14
2.5.2	Slot 1	15
2.5.3	Slot 2	16
A	Summary	17
A.1	Status	17
A.2	Comments	17

1 Front

seq_num	201349	Sequence number
obs_id	23197	Observation id
title	Stellar activity with TESS and Chandra	Proposal title
observer	Hans Guenther	Principal investigator
object	2RXS J105200.0-090427	Source name
dtcycle	0	
cycle	P	events from which exps? Prim/Second/Both
ra_targ	162.998962	Observer's specified target RA [deg]
dec_targ	-9.079123	Observer's specified target Dec [deg]
ra_nom	163.0027273095	Nominal RA [deg]
dec_nom	-9.0774234106207	Nominal Dec [deg]
roll_nom	322.17733787785	Nominal Roll [deg]
revision	1	Processing version of data
ontime	20093.69625175	Sum of GTIs [s]
livetime	19822.524121764	Livetime [s]
ontime7	20093.69625175	Sum of GTIs [s]
l2events	85728	Number of level 2 events



2 OBI

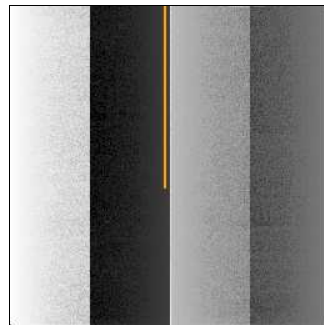
2.1 OBI

2.1.1 Images



2.1.2 Bias

Chip 7



2.1.3 Parameters

obi_num	0	Obi number	sched_exp_time	20000.000000	[s] Scheduled observation exposure time
ascdsver	10.8.1	Processing system revision	ontime	20093.69625175	Sum of GTIs [s]
caldbver	4.8.4.2	 	ontime7	20093.69625175	Sum of GTIs [s]
date	2020-03-12T16:51:54	Date and time of file creation	l1events	200117	Number of level 1 events
revision	1	Processing version of data			

2.1.4 Events

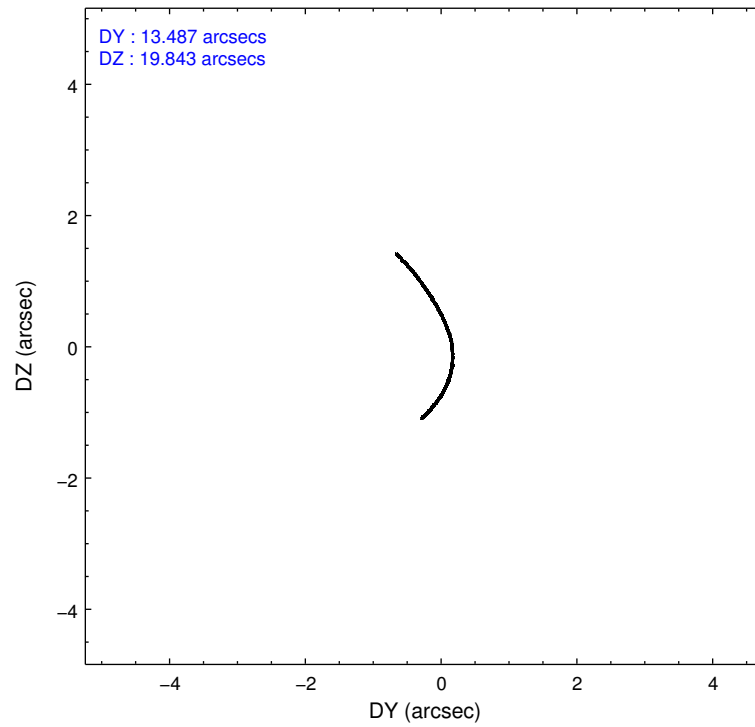
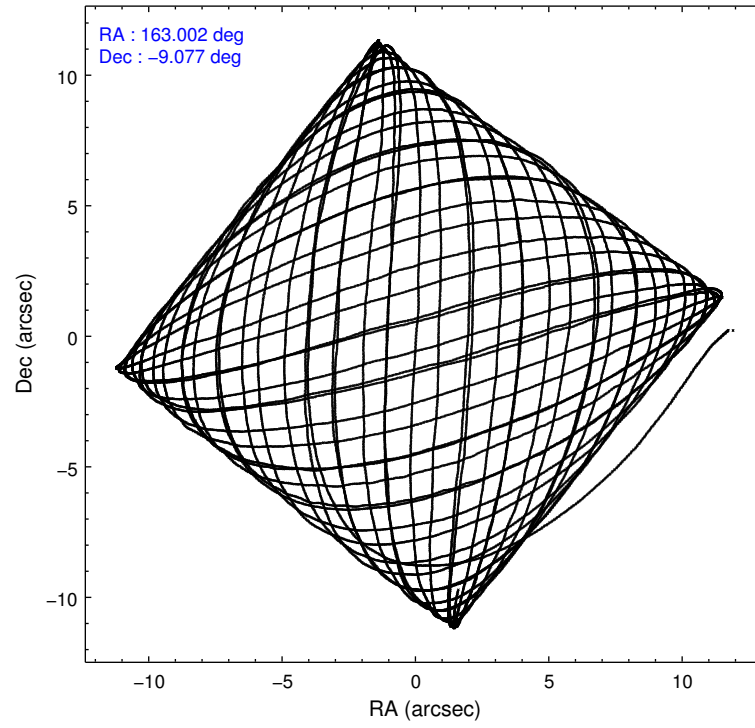
	ccd 7
level 1 events	200117
rejected events	112200
rejected %	56%

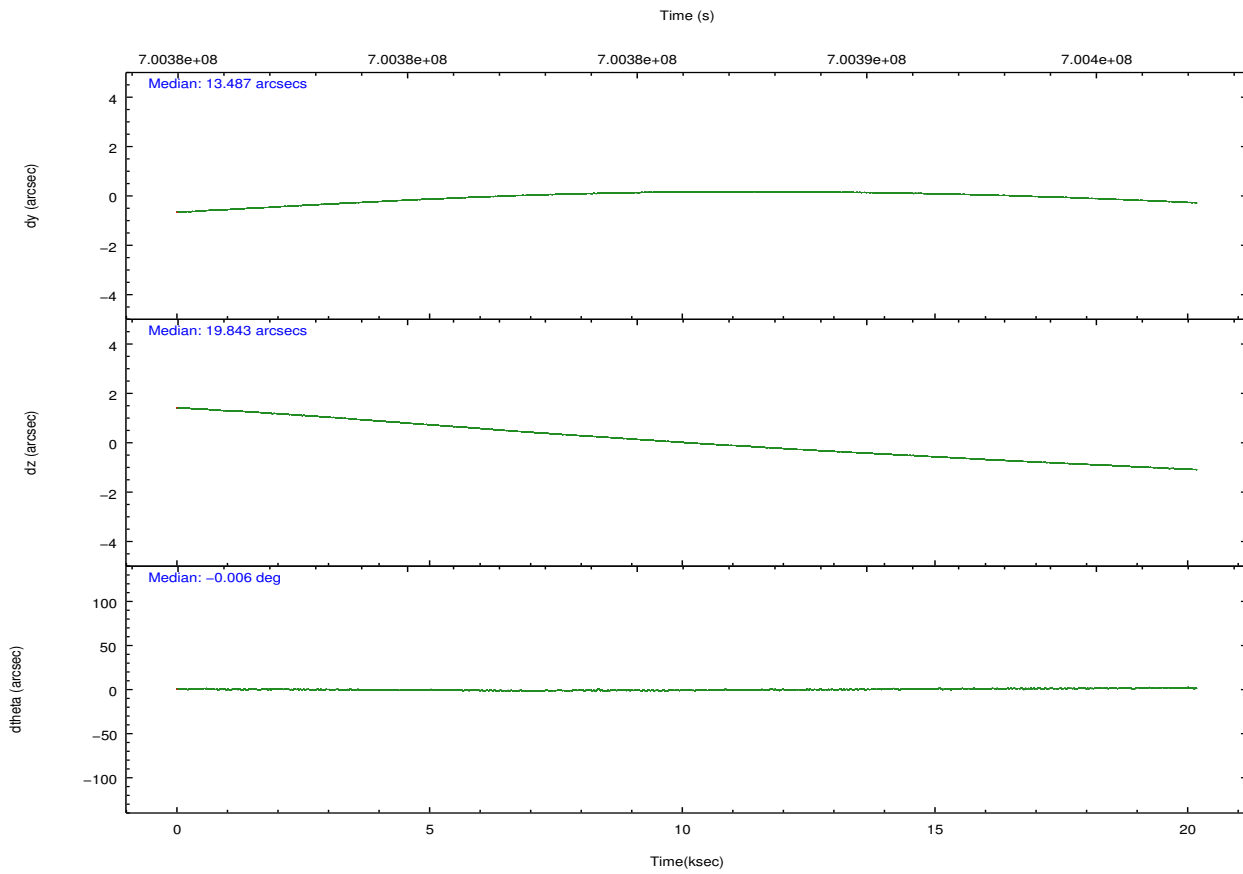
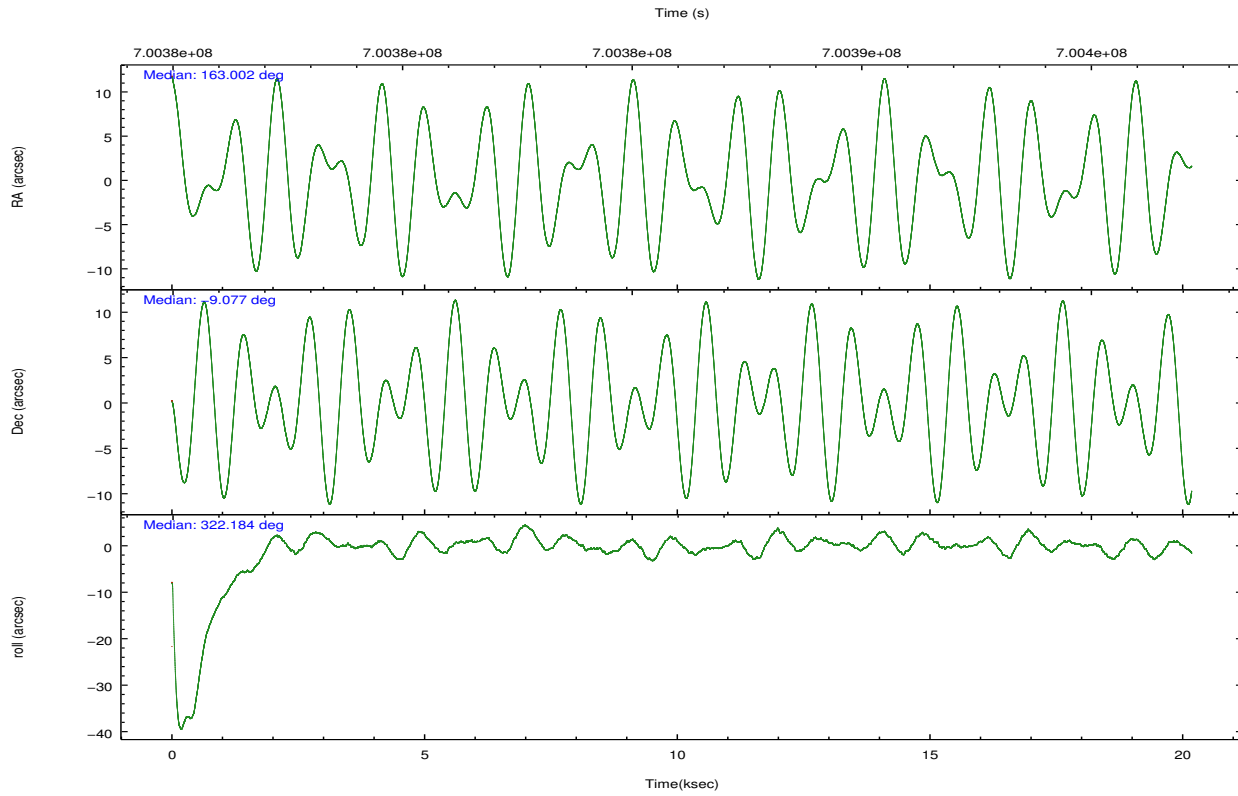
	ccd 7
grade 0 events	7419
	3%
grade 1 events	291
	0%
grade 2 events	19198
	9%
grade 3 events	6873
	3%
grade 4 events	6675
	3%
grade 5 events	19574
	9%
grade 6 events	47763
	23%
grade 7 events	92324
	46%

2.2 Compared Parameters

Parameter	Planned	Actual	Parameter	Planned	Actual
Instrument	ACIS	ACIS	Obspar format version number	7	7
Detector	ACIS-7	ACIS-7	Obspar file type	PREDICTED	ACTUAL
Grating	NONE	NONE	Obspar update status	NONE	UPDATED
Data mode	VFAINT	VFAINT	Number of optional ACIS chips dropped	0	0
Observation mode	POINTING	POINTING	On-chip summing requested	N	N
[deg] Pointing RA	162.975139	163.0027273095013	Subarray requested	NONE	NONE
[deg] Pointing Dec	-9.074024	-9.077423410620689	Alternating exposures requested	N	N
[deg] Pointing Roll	322.016337	322.1773378778497	[s] Primary exposure time	0.000000	3
[mm] SIM focus pos	-0.684267	-0.6828225247311905			
[mm] SIM defocus	0	0.001444936568705701			
[mm] SIM translation stage pos	-190.132523	-190.1425803651734			
[mm] SIM translation stage offset	0	0.01005778216563158			
[s] Observation start time (MET)	700376157.184000	700374863.97785			
Observation start date	2020-03-12T04:54:48	2020-03-12T04:34:23			
[s] Observation end time (MET)	700396157.184000	700397105.9666899			
Observation end date	2020-03-12T10:28:08	2020-03-12T10:45:05			
Read mode	TIMED	TIMED			

2.3 Aspect





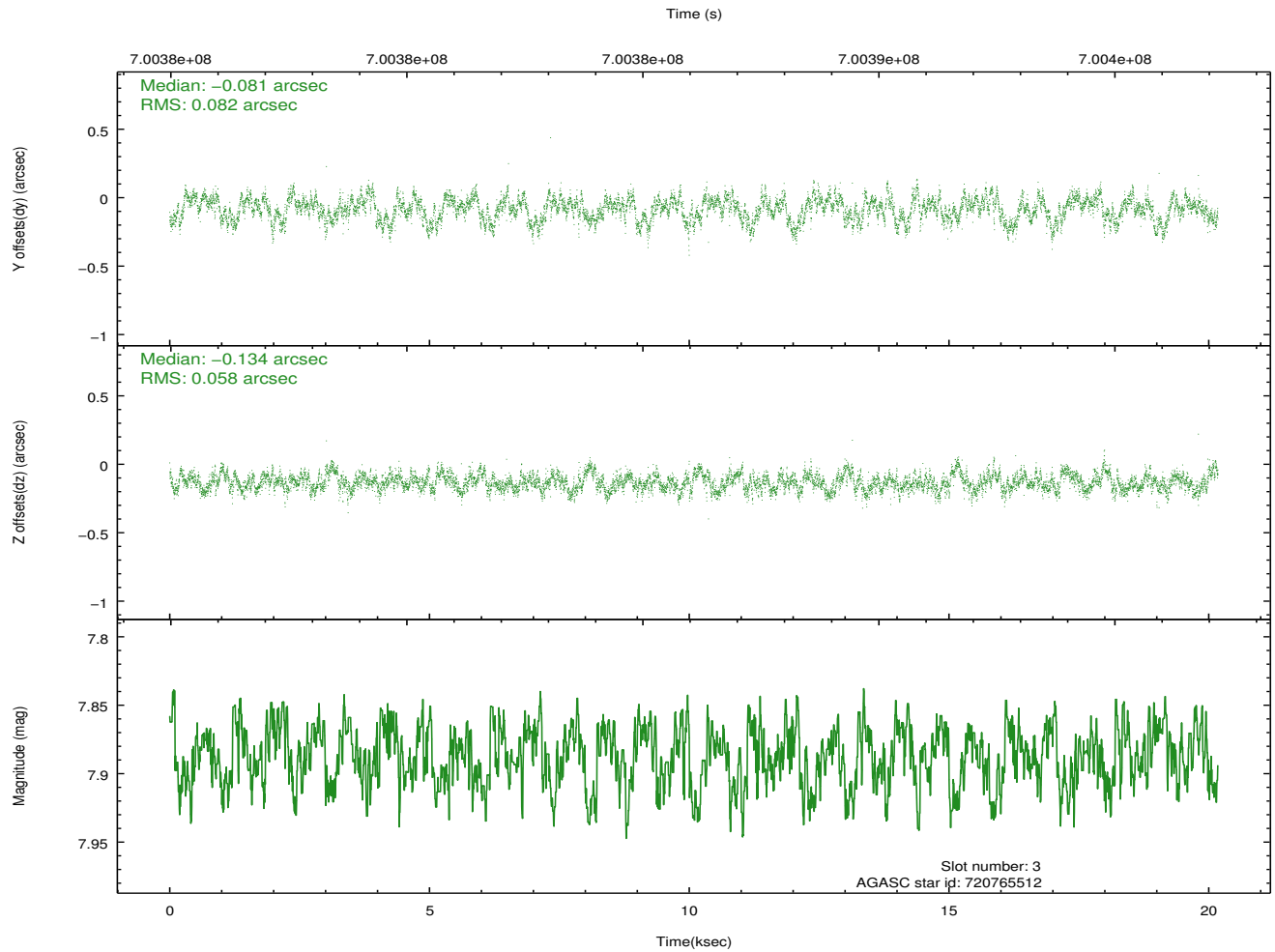
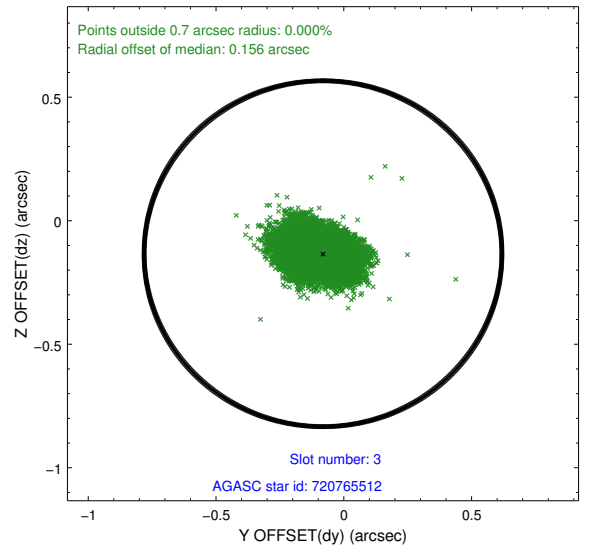
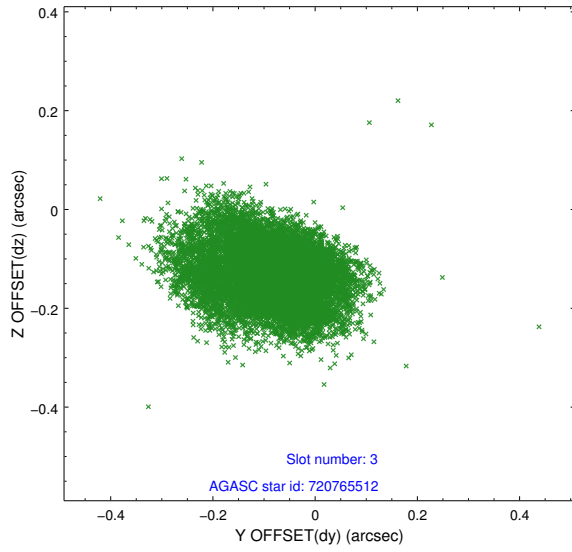
Slot Statistics

slot	status	used	id	mag	n_pts	frac_pts	med_dy	med_dz	dr1	dr2	ra	dec	mean_y	mea
0	FID		ACIS-S-2	7.00	4920	1.000	-0.264	-0.146	0.021	0.040	0.000000	0.000000	-766.54	-1741
1	FID		ACIS-S-4	7.14	4922	1.000	0.734	0.168	0.019	0.066	0.000000	0.000000	2147.56	167
2	FID		ACIS-S-5	7.10	4922	1.000	-0.494	-0.015	0.035	0.055	0.000000	0.000000	-1819.45	160
3	GUIDE	used	720765512	7.89	9840	1.000	-0.081	-0.134	0.107	0.174	162.619866	-8.462614	-2350.98	957
4	GUIDE	used	720767440	8.20	9839	1.000	-0.125	-0.054	0.090	0.148	163.299868	-9.344477	1510.62	-57
5	GUIDE	used	720774600	7.01	9842	1.000	0.099	0.278	0.087	0.138	162.241304	-9.100022	-1995.52	-1680
6	GUIDE	used	720776376	7.36	9844	1.000	0.026	0.177	0.133	0.230	162.556561	-8.988402	-1362.17	-672
7	GUIDE	used	720777144	8.51	9836	1.000	0.068	-0.264	0.121	0.190	162.737966	-8.887229	-1077.72	11

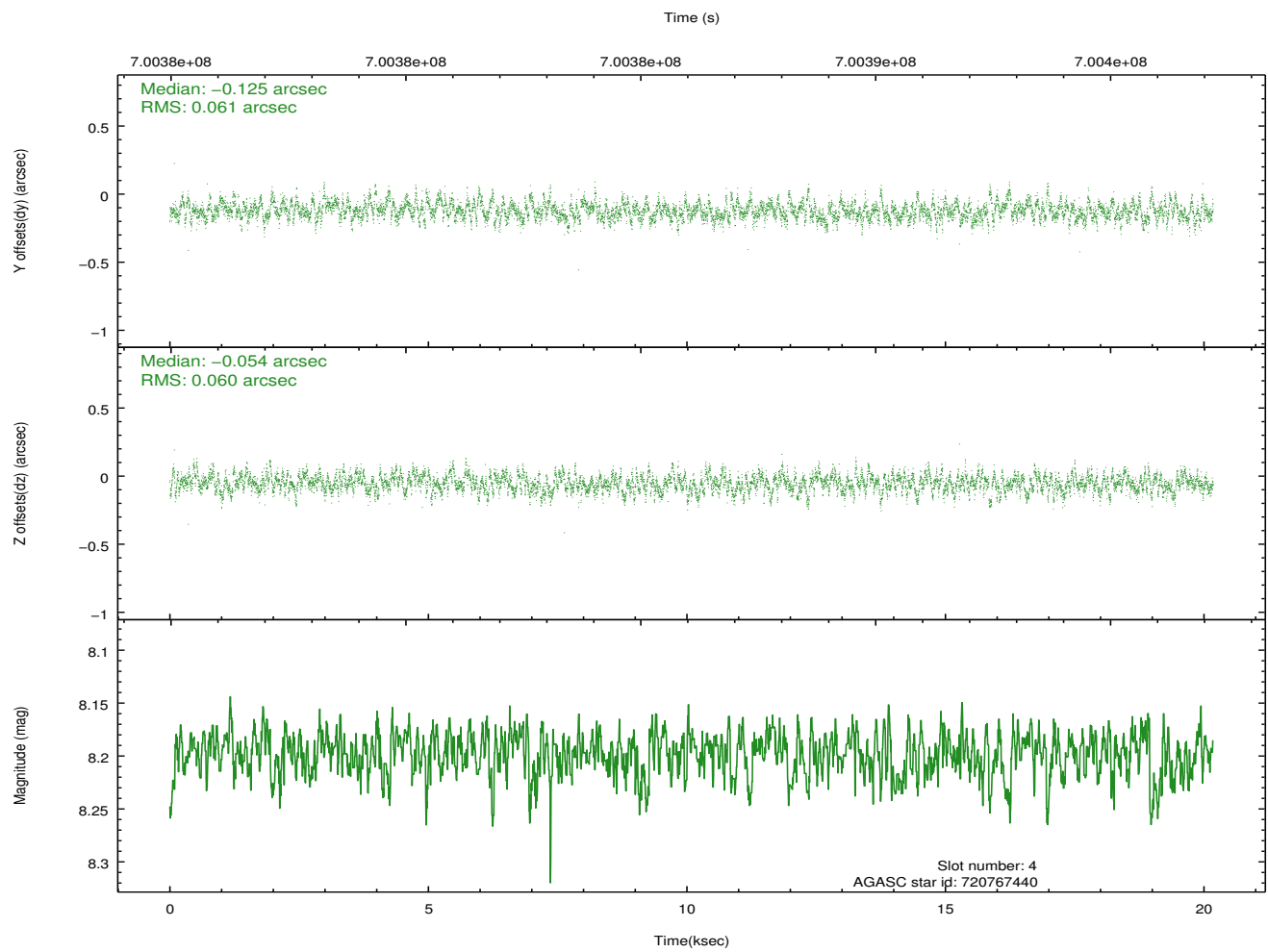
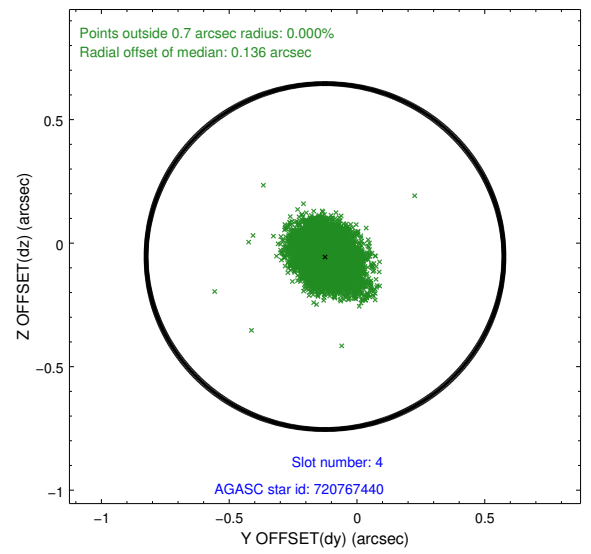
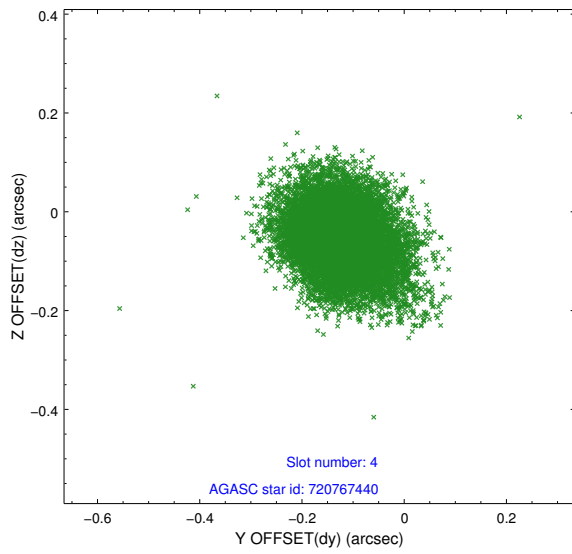
∞

2.4 Star Slots

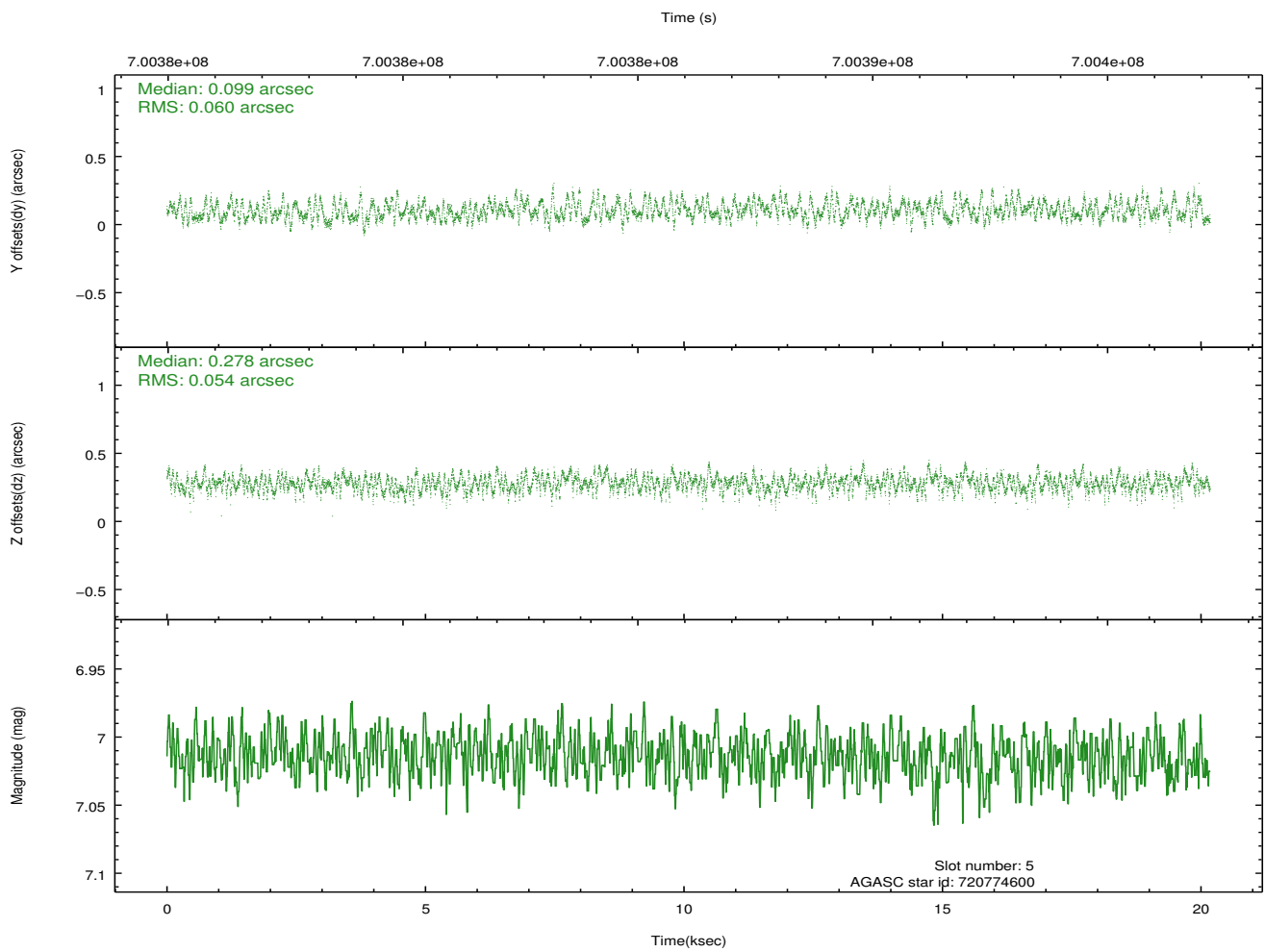
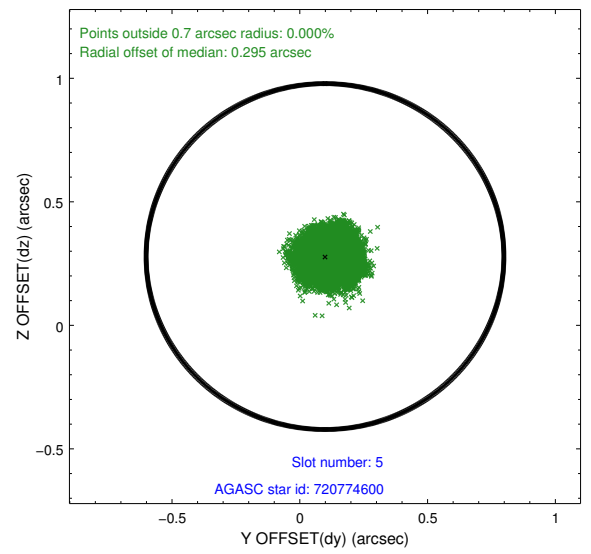
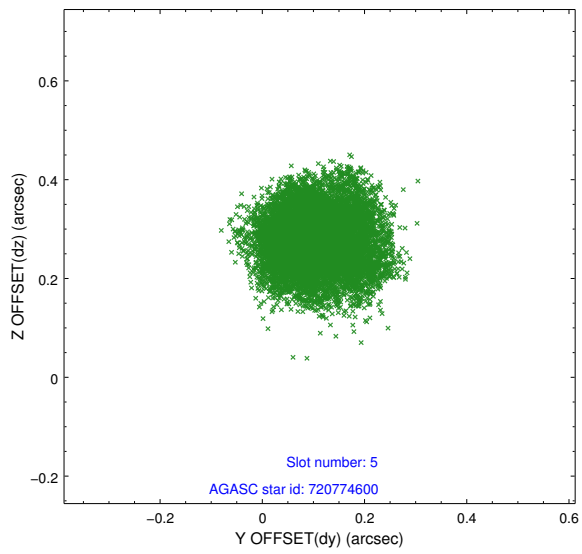
2.4.1 Slot 3



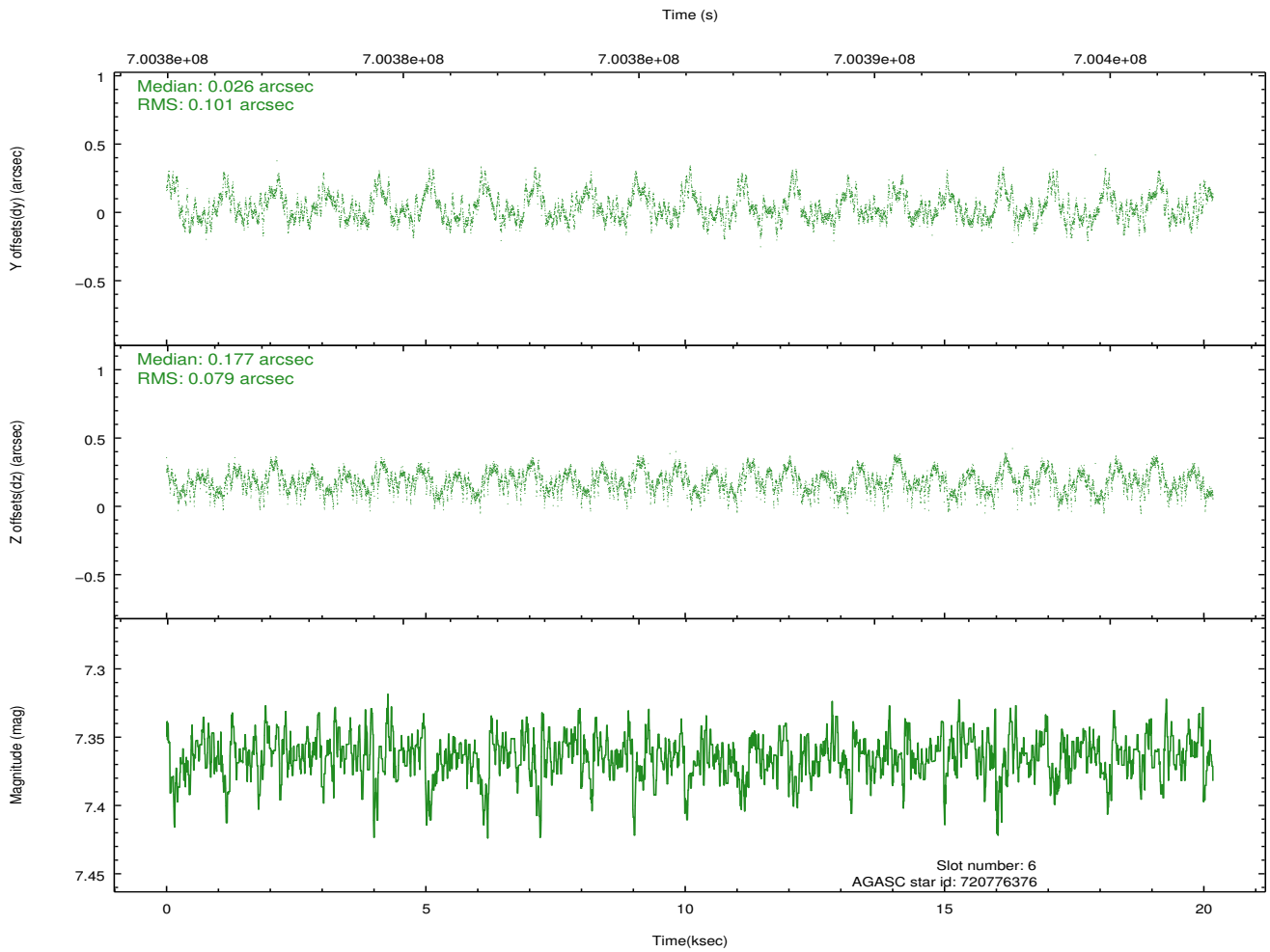
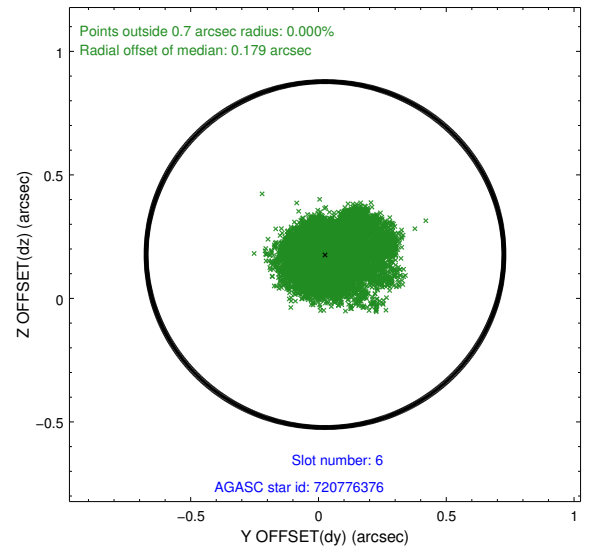
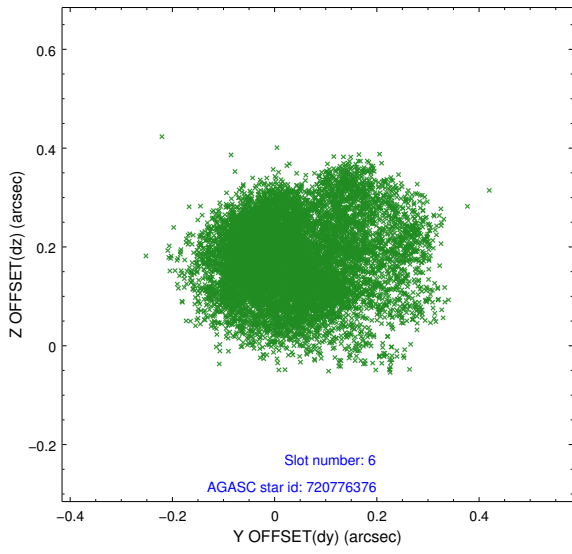
2.4.2 Slot 4



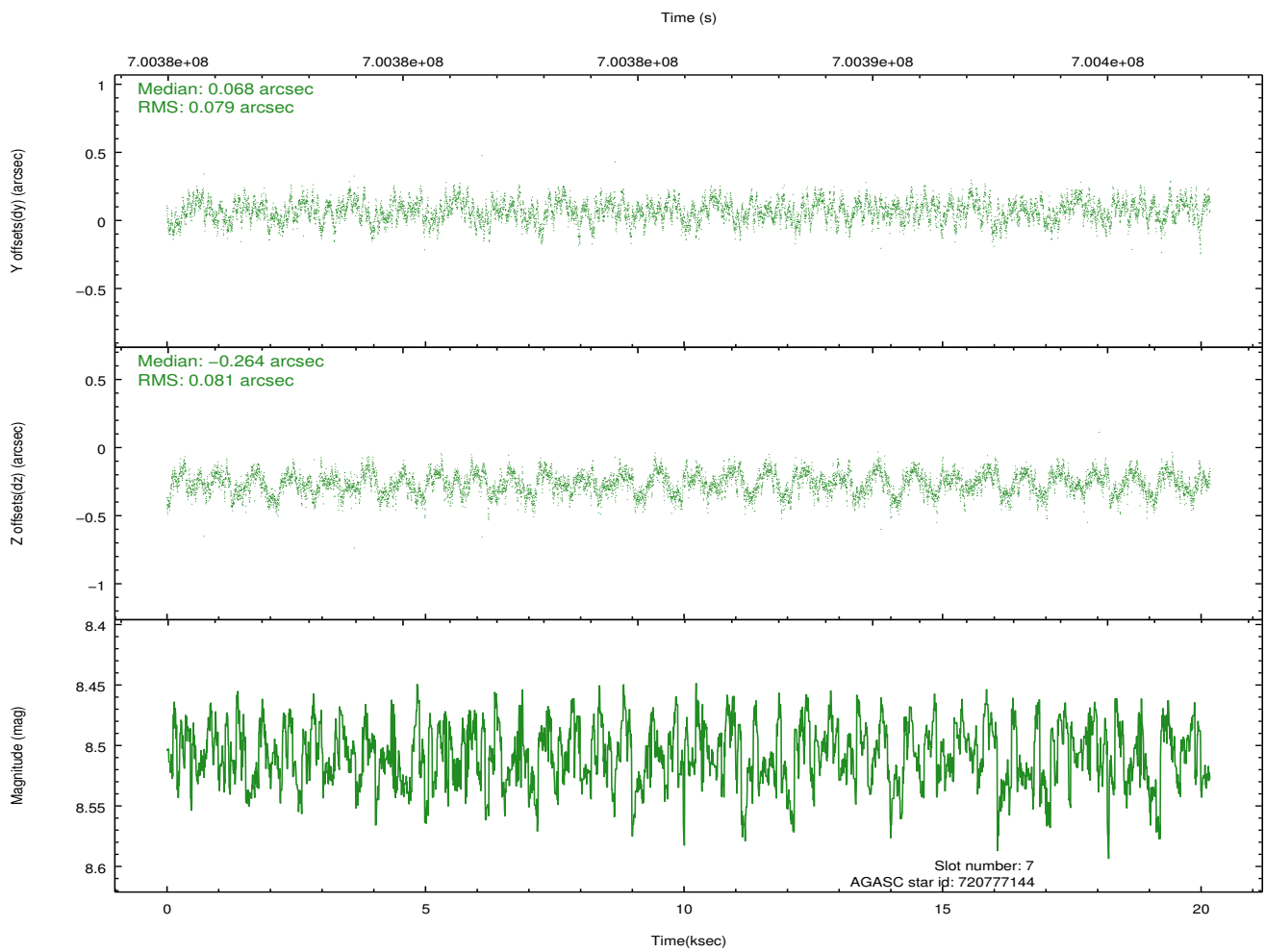
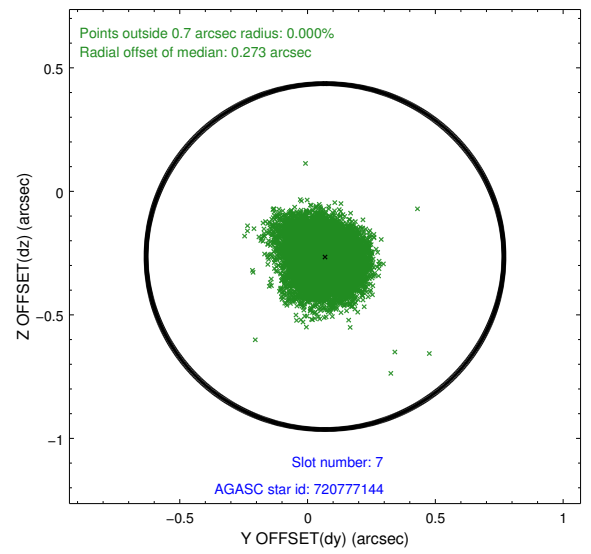
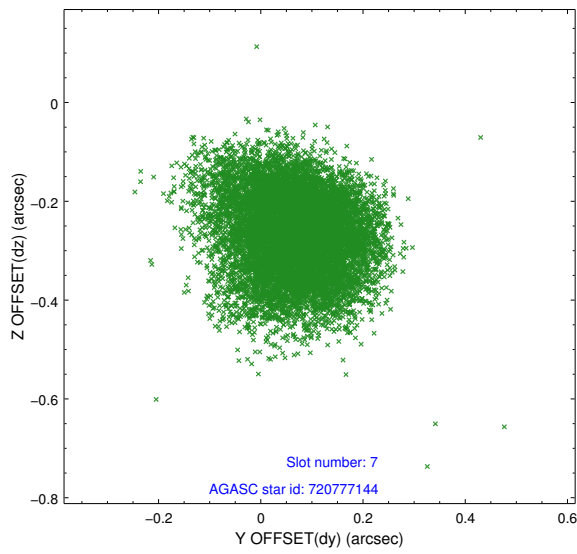
2.4.3 Slot 5



2.4.4 Slot 6

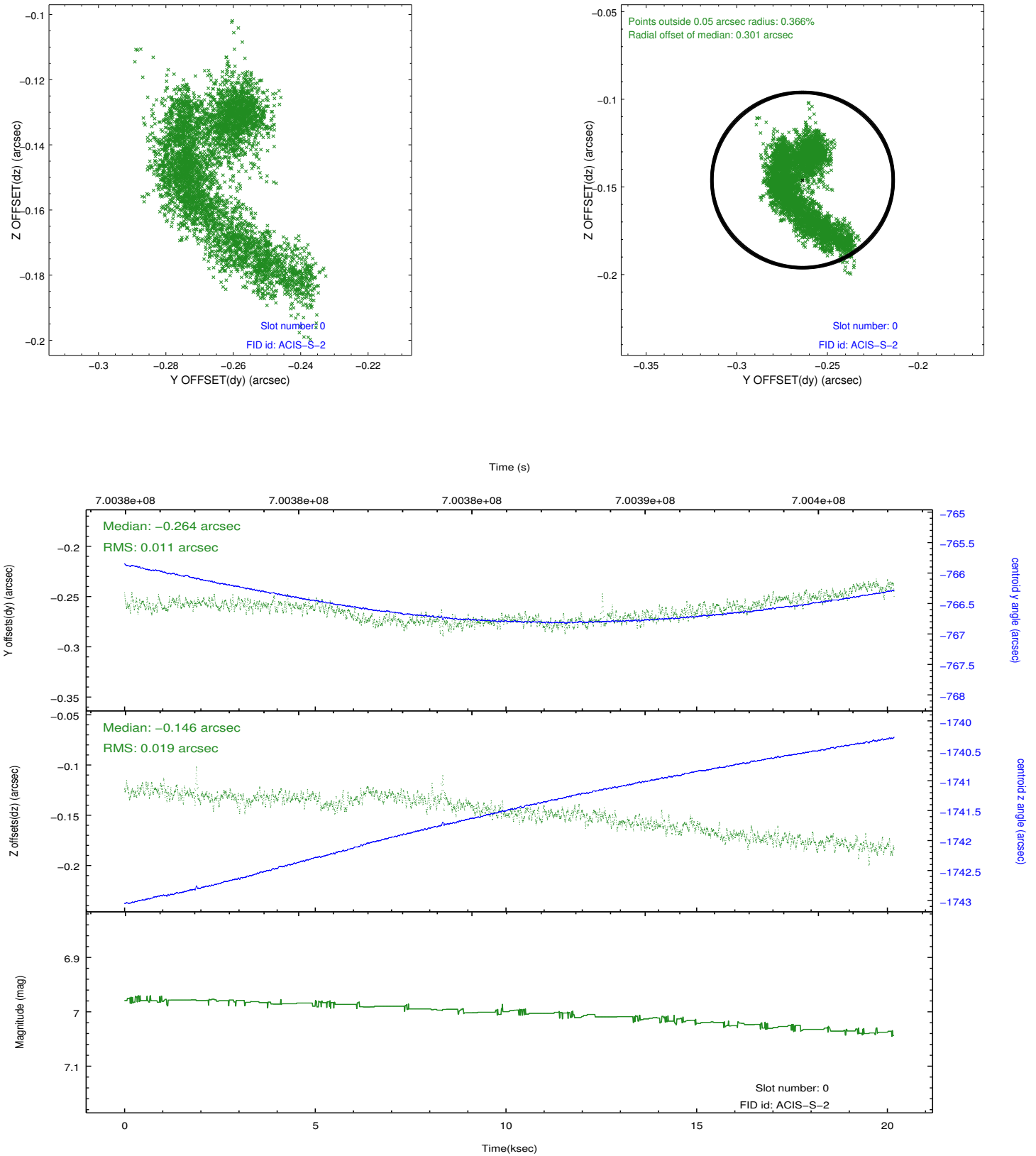


2.4.5 Slot 7

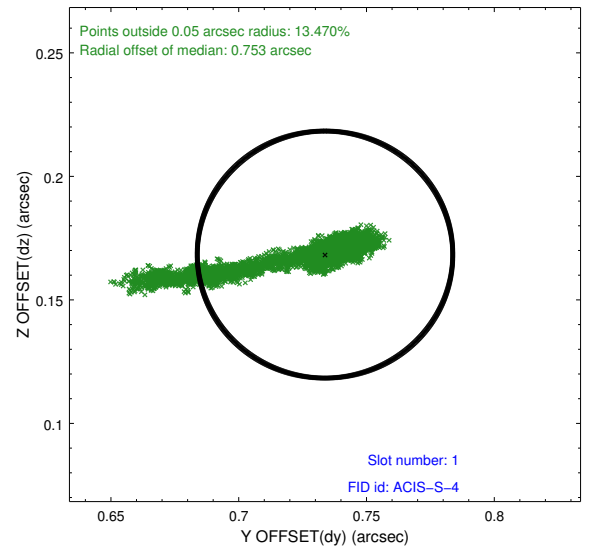
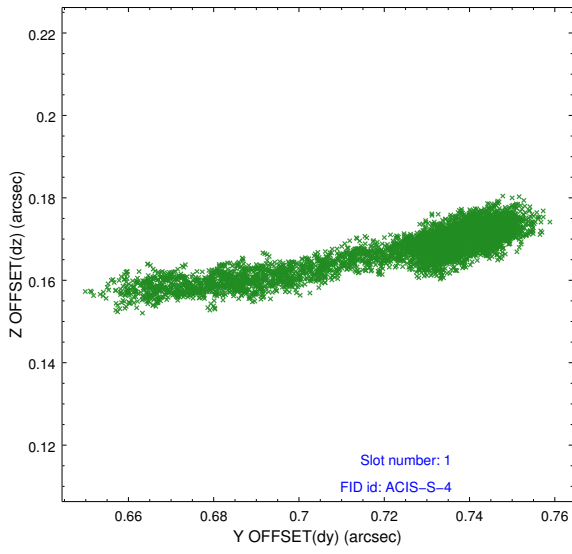


2.5 FID Slots

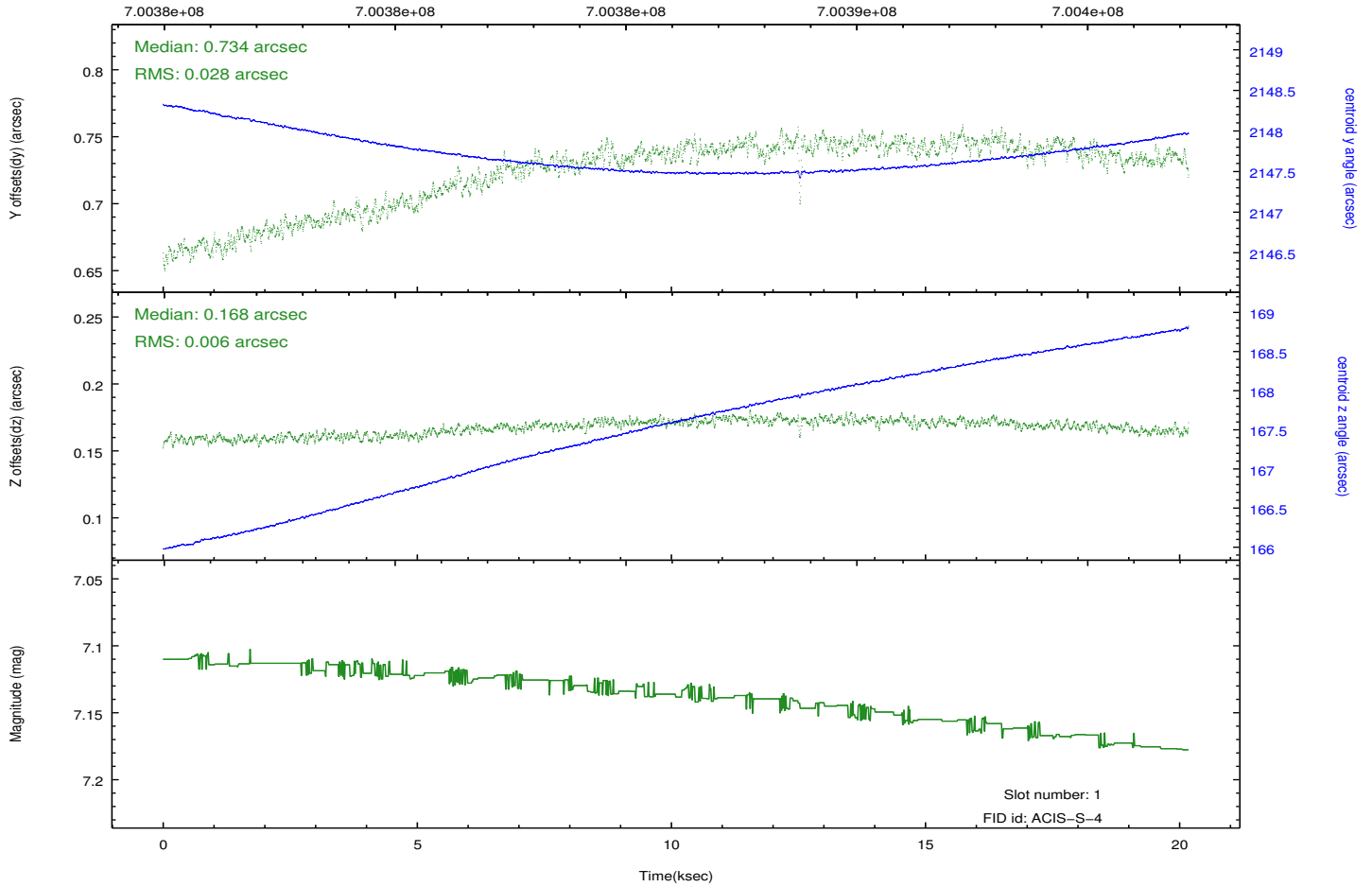
2.5.1 Slot 0



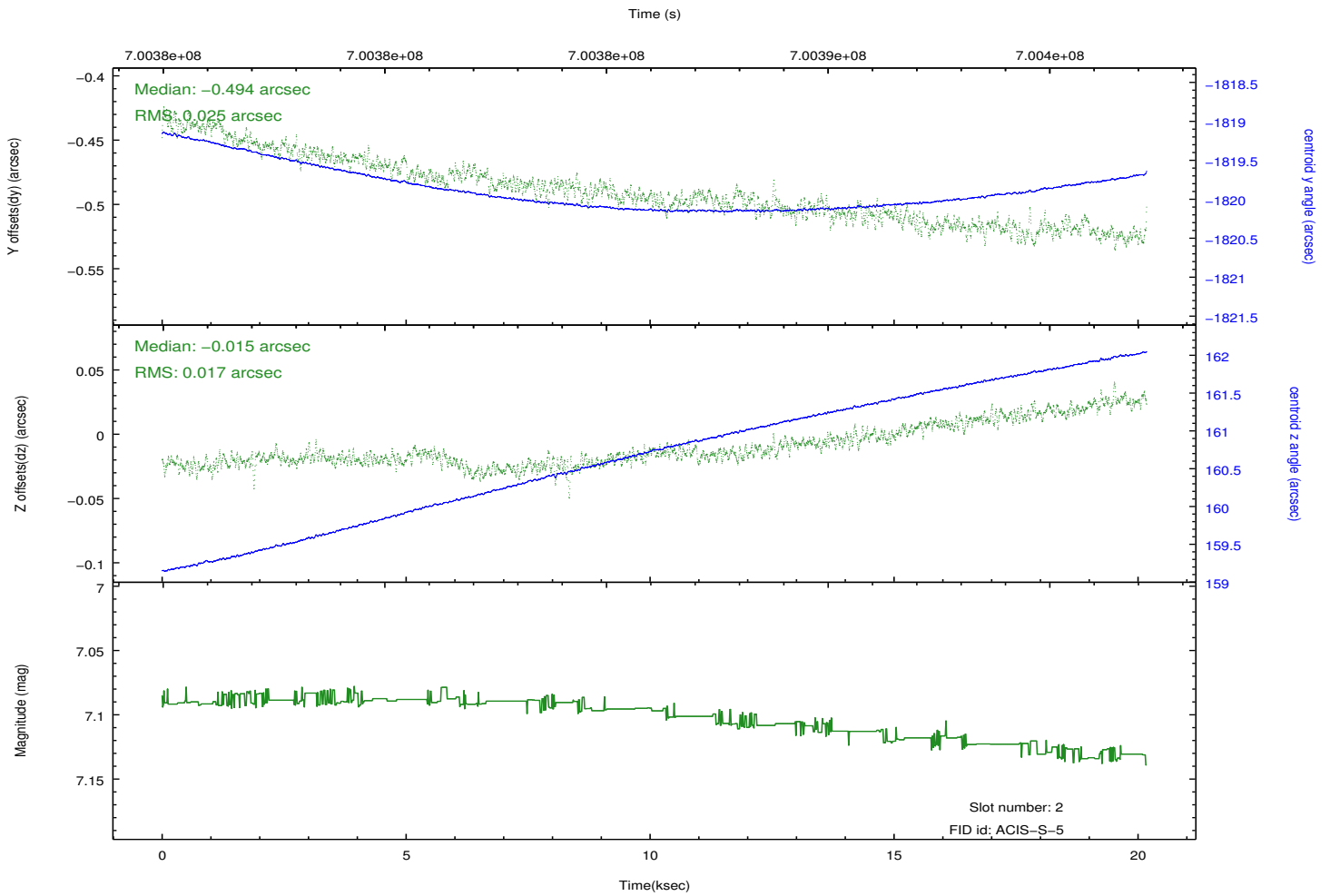
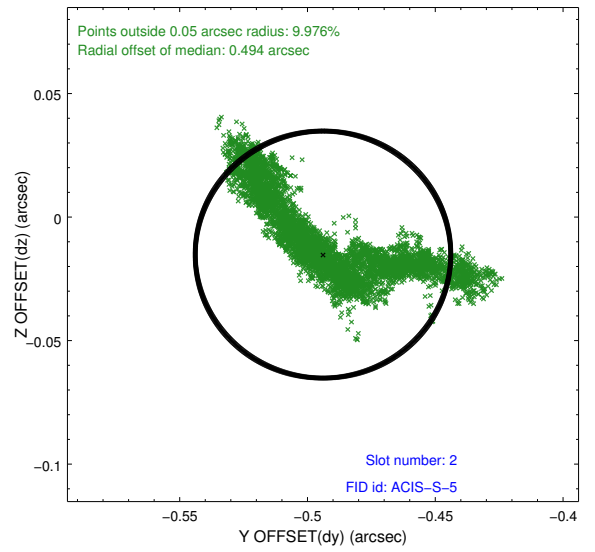
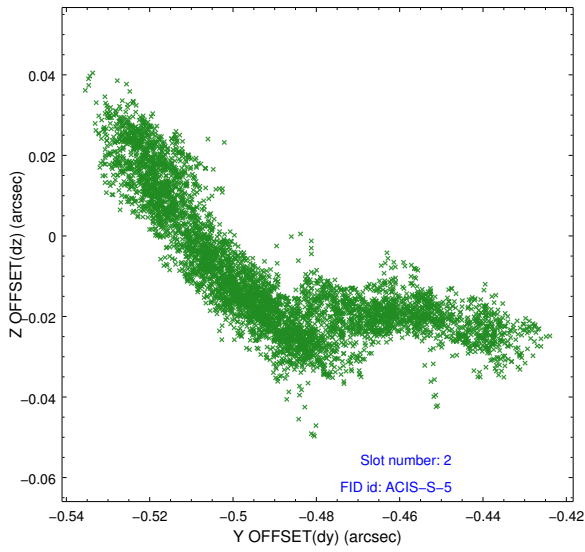
2.5.2 Slot 1



Time (s)



2.5.3 Slot 2



A Summary

A.1 Status

V&V Scientist	Beth Sundheim
V&V Date (YYYY-MM-DD)	2020.03.12
V&V Edition	1
V&V Disposition and Status	OK
V&V Charge Time	20.09369625175

A.2 Comments