

V&V Reference Report

L2 ASCDS Version : 10.8.1

Observation 22529 - L2 Version 1
Chandra X-Ray Center

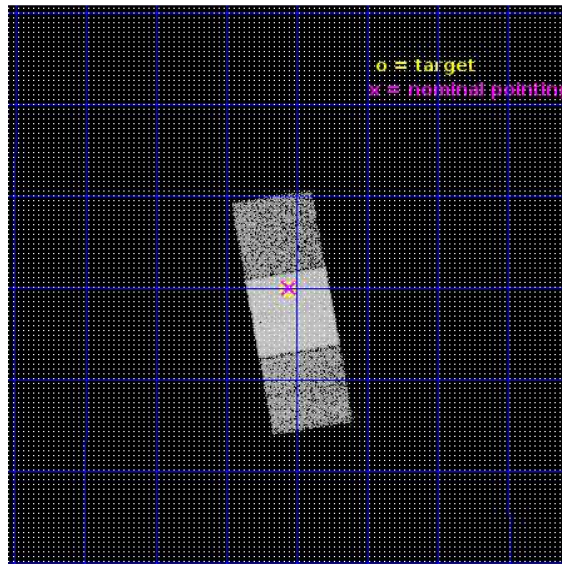
L2 Processing Date : Oct 28 2019

Contents

1	Front	2
2	OBI	3
2.1	OBI	3
2.1.1	Images	3
2.1.2	Bias	3
2.1.3	Parameters	4
2.1.4	Events	4
2.2	Compared Parameters	5
2.3	Aspect	6
2.4	Star Slots	9
2.4.1	Slot 3	9
2.4.2	Slot 4	10
2.4.3	Slot 6	11
2.4.4	Slot 7	12
2.5	FID Slots	13
2.5.1	Slot 0	13
2.5.2	Slot 1	14
2.5.3	Slot 2	15
A	Summary	16
A.1	Status	16
A.2	Comments	16

1 Front

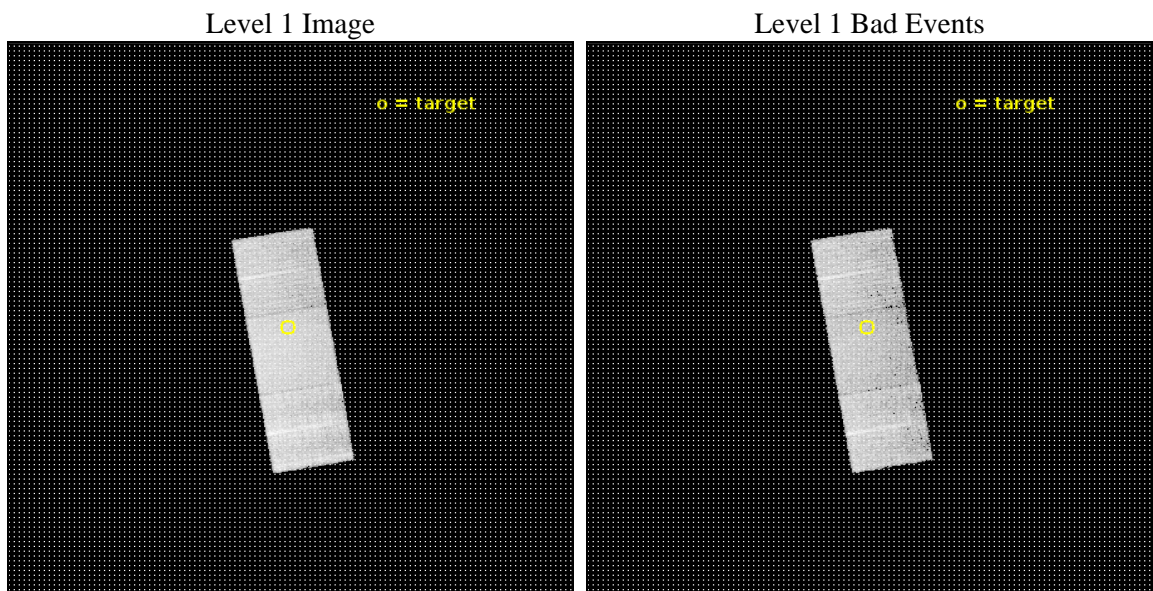
seq_num	703917	Sequence number
obs_id	22529	Observation id
title	Revealing the Full Range of X-ray Properties of Weak-Line Quasars	
observer	William Brandt	Principal investigator
object	SDSS J0945+1009	Source name
dtcycle	0	
cycle	P	events from which exps? Prim/Second/Both
ra_targ	146.391583	Observer's specified target RA [deg]
dec_targ	10.163917	Observer's specified target Dec [deg]
ra_nom	146.38820432306	Nominal RA [deg]
dec_nom	10.166840313052	Nominal Dec [deg]
roll_nom	80.157245543696	Nominal Roll [deg]
revision	1	Processing version of data
ontime	9112.8022840023	Sum of GTIs [s]
livetime	8993.7368134144	Livetime [s]
ontime6	9112.7612440586	Sum of GTIs [s]
ontime7	9112.8022840023	Sum of GTIs [s]
ontime8	9112.7202039957	Sum of GTIs [s]
l2events	52858	Number of level 2 events



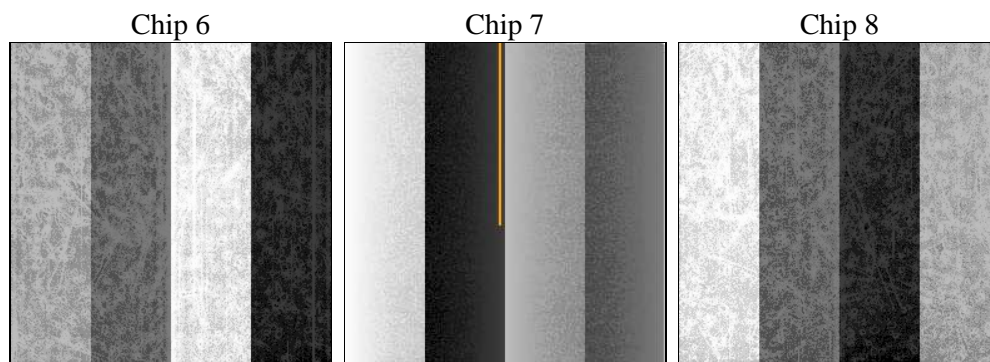
2 OBI

2.1 OBI

2.1.1 Images



2.1.2 Bias



2.1.3 Parameters

obi_num	0	Obi number	sched_exp_time	9000.000000	[s] Scheduled observation exposure time
ascdsver	10.8.1	Processing system revision	ontime	9112.8022840023	Sum of GTIs [s]
caldbver	4.8.4.2	 	ontime6	9112.7612440586	Sum of GTIs [s]
date	2019-10-28T05:29:23	Date and time of file creation	ontime7	9112.8022840023	Sum of GTIs [s]
revision	1	Processing version of data	ontime8	9112.7202039957	Sum of GTIs [s]
			l1events	244482	Number of level 1 events

2.1.4 Events

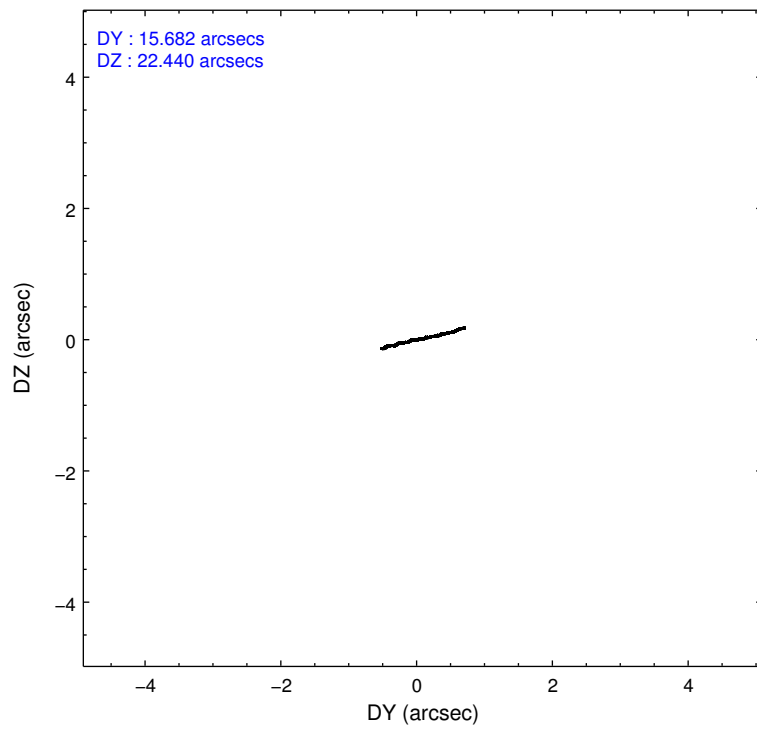
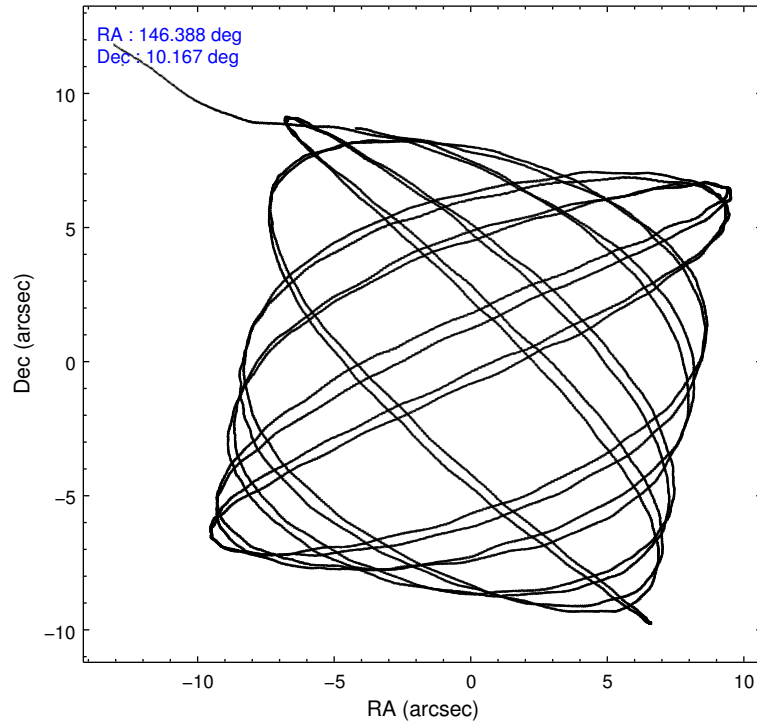
	ccd 6	ccd 7	ccd 8
level 1 events	67042	87450	89990
rejected events	59181	49123	64221
rejected %	88%	56%	71%

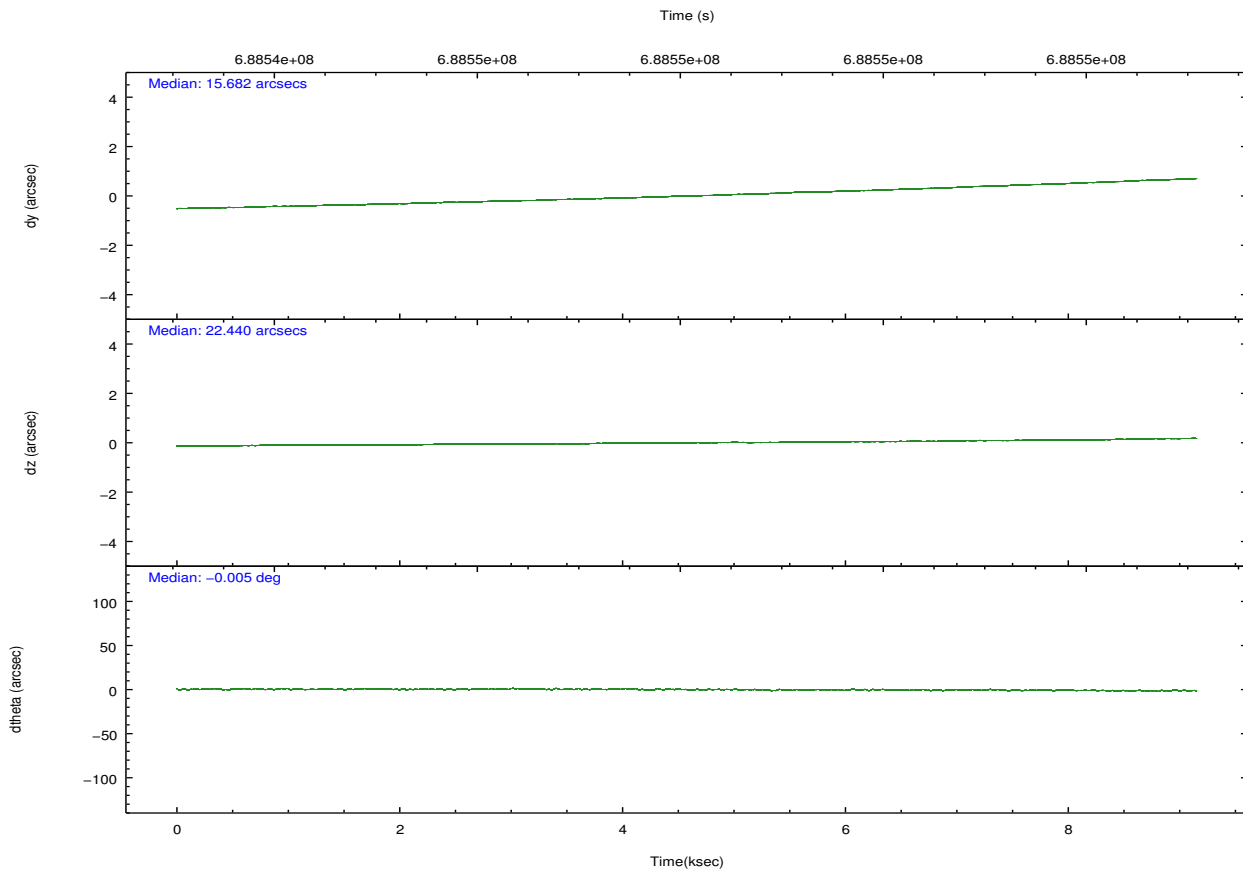
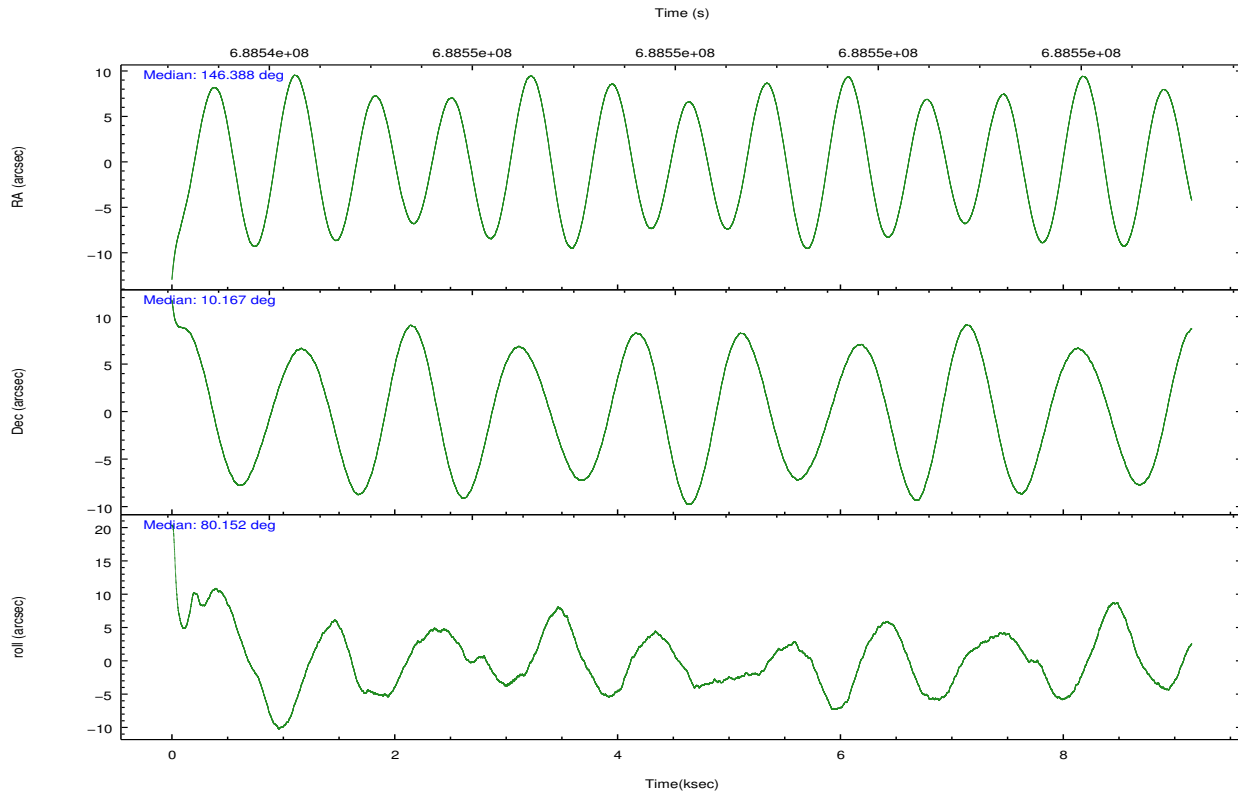
	ccd 6	ccd 7	ccd 8
grade 0 events	2612	3210	7514
	3%	3%	8%
grade 1 events	34	130	63
	0%	0%	0%
grade 2 events	1801	8303	6231
	2%	9%	6%
grade 3 events	784	3002	2695
	1%	3%	2%
grade 4 events	774	3042	2567
	1%	3%	2%
grade 5 events	3235	8671	5028
	4%	9%	5%
grade 6 events	1895	20799	6817
	2%	23%	7%
grade 7 events	55907	40293	59075
	83%	46%	65%

2.2 Compared Parameters

Parameter	Planned	Actual	Parameter	Planned	Actual
Instrument	ACIS	ACIS	Obspar format version number	7	7
Detector	ACIS-678	ACIS-678	Obspar file type	PREDICTED	ACTUAL
Grating	NONE	NONE	Obspar update status	NONE	UPDATED
Data mode	VFAINT	VFAINT	CCD I0 on	N	N
Observation mode	POINTING	POINTING	CCD I1 on	N	N
[deg] Pointing RA	146.398146	146.3882043230633	CCD I2 on	N	N
[deg] Pointing Dec	10.141174	10.16684031305181	CCD I3 on	N	N
[deg] Pointing Roll	79.998842	80.15724554369648	CCD S0 on	N	N
[mm] SIM focus pos	-0.684267	-0.6828225247311905	CCD S1 on	N	N
[mm] SIM defocus	0	0.001444936568705701	CCD S2 on	O2	Y
[mm] SIM translation stage pos	-190.132523	-190.1425803651734	CCD S3 on	Y	Y
[mm] SIM translation stage offset	0	0.01005778216563158	CCD S4 on	O1	Y
[s] Observation start time (MET)	688543630.184000	688542476.97509	CCD S5 on	N	N
Observation start date	2019-10-27T06:06:01	2019-10-27T05:47:56	Number of optional ACIS chips dropped	0	0
[s] Observation end time (MET)	688552630.184000	688553635.12576	On-chip summing requested	N	N
Observation end date	2019-10-27T08:36:01	2019-10-27T08:53:55	Subarray requested	NONE	NONE
Read mode	TIMED	TIMED	Alternating exposures requested	N	N
			[s] Primary exposure time	0.000000	3.1

2.3 Aspect





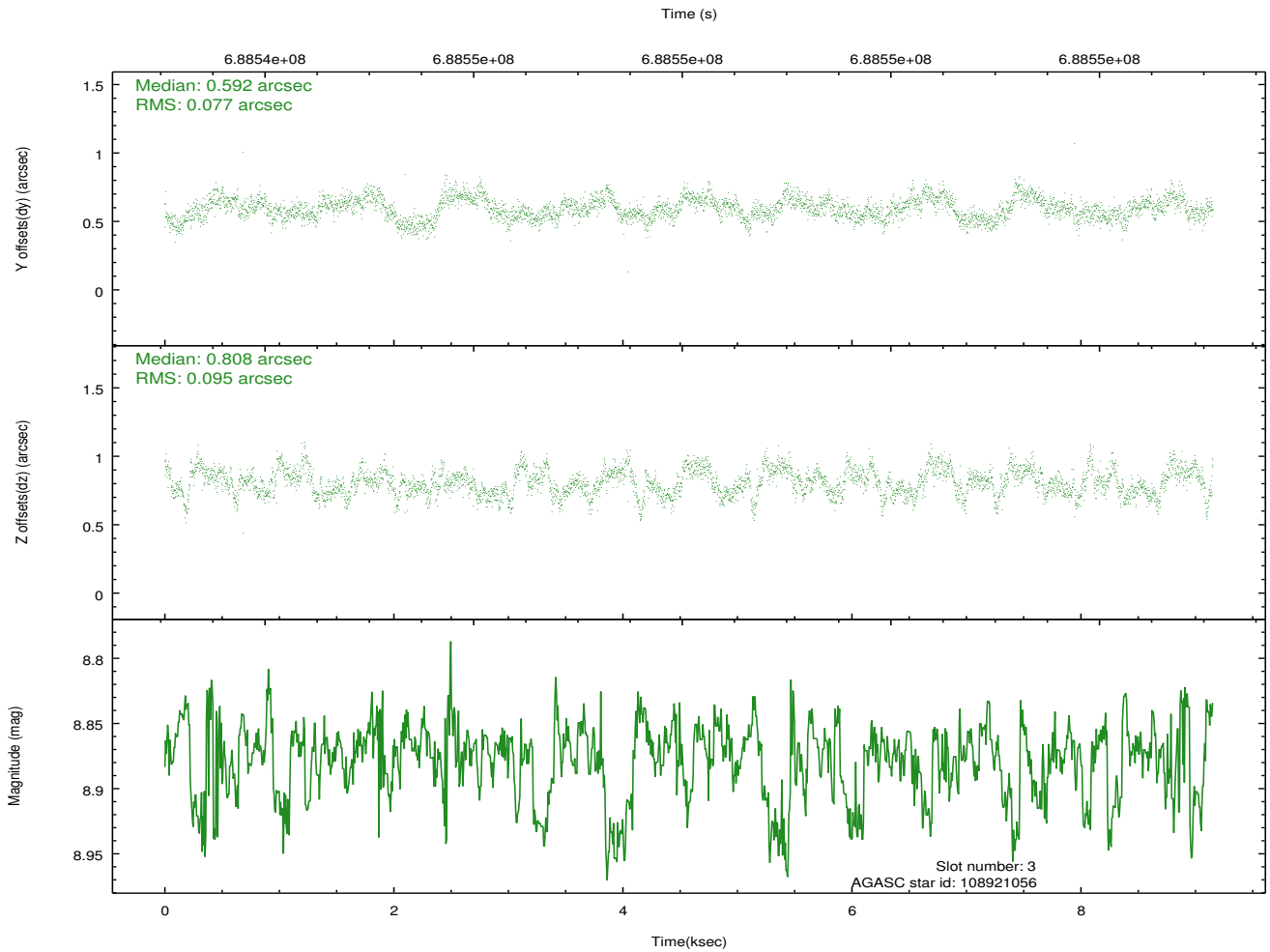
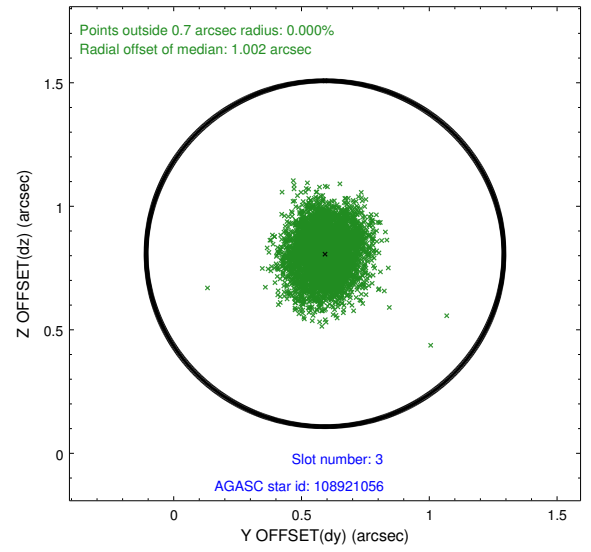
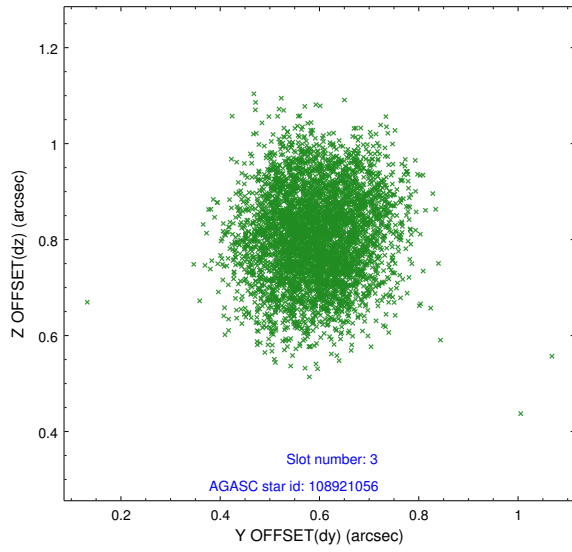
Slot Statistics

slot	status	used	id	mag	n_pts	frac_pts	med_dy	med_dz	dr1	dr2	ra	dec	mean_y	mean_x
0	FID		ACIS-S-2	6.98	2233	1.000	-0.281	-0.212	0.011	0.019	0.000000	0.000000	-768.96	-1744
1	FID		ACIS-S-4	7.09	2233	1.000	0.691	0.192	0.010	0.022	0.000000	0.000000	2144.99	164
2	FID		ACIS-S-5	7.07	2233	1.000	-0.441	0.028	0.013	0.022	0.000000	0.000000	-1821.22	158
3	GUIDE	used	108921056	8.88	4461	1.000	0.592	0.808	0.132	0.207	146.524966	10.064292	-194.39	-491
4	GUIDE	used	108924512	7.13	4465	1.000	-0.145	-0.310	0.112	0.160	145.897030	10.518871	1029.10	1980
5	OMITTED			0.00	0	0.000	0.000	0.000	0.000	0.000	0.000000	0.000000	0.00	0
6	GUIDE	used	108929824	8.66	4464	1.000	-0.151	-0.283	0.105	0.177	145.788906	10.499835	897.93	2348
7	GUIDE	used	108930080	7.75	4462	1.000	-0.295	-0.209	0.069	0.112	146.251657	10.802296	2253.06	922

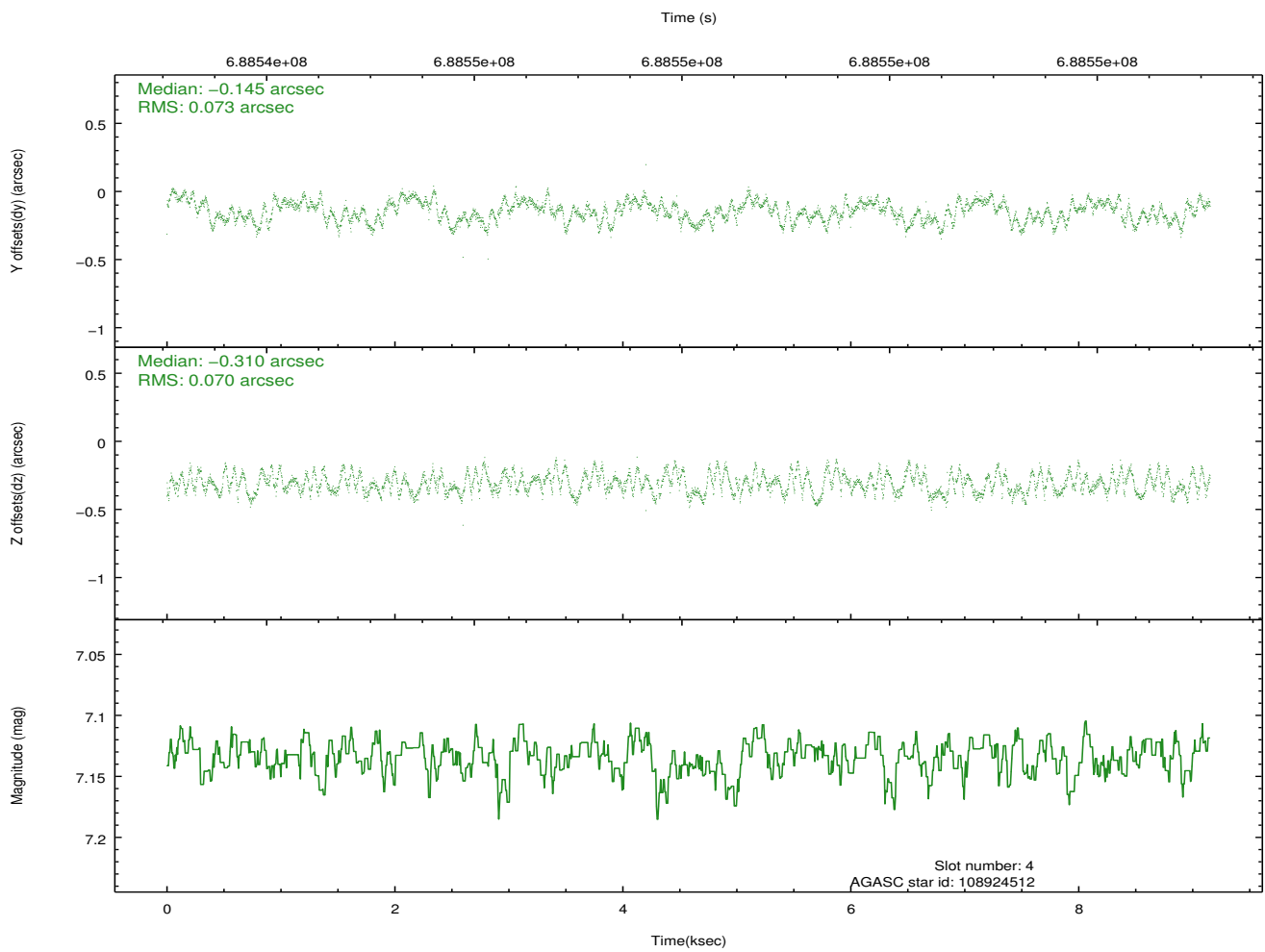
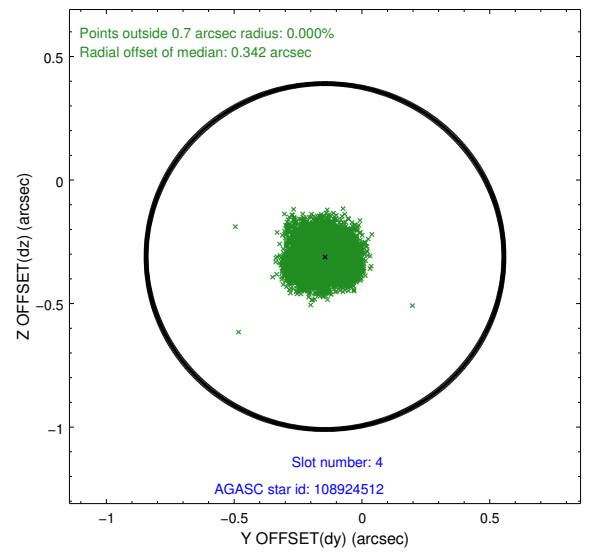
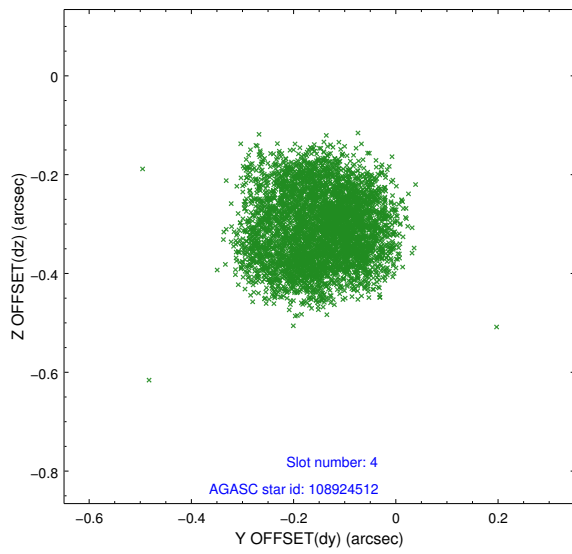
∞

2.4 Star Slots

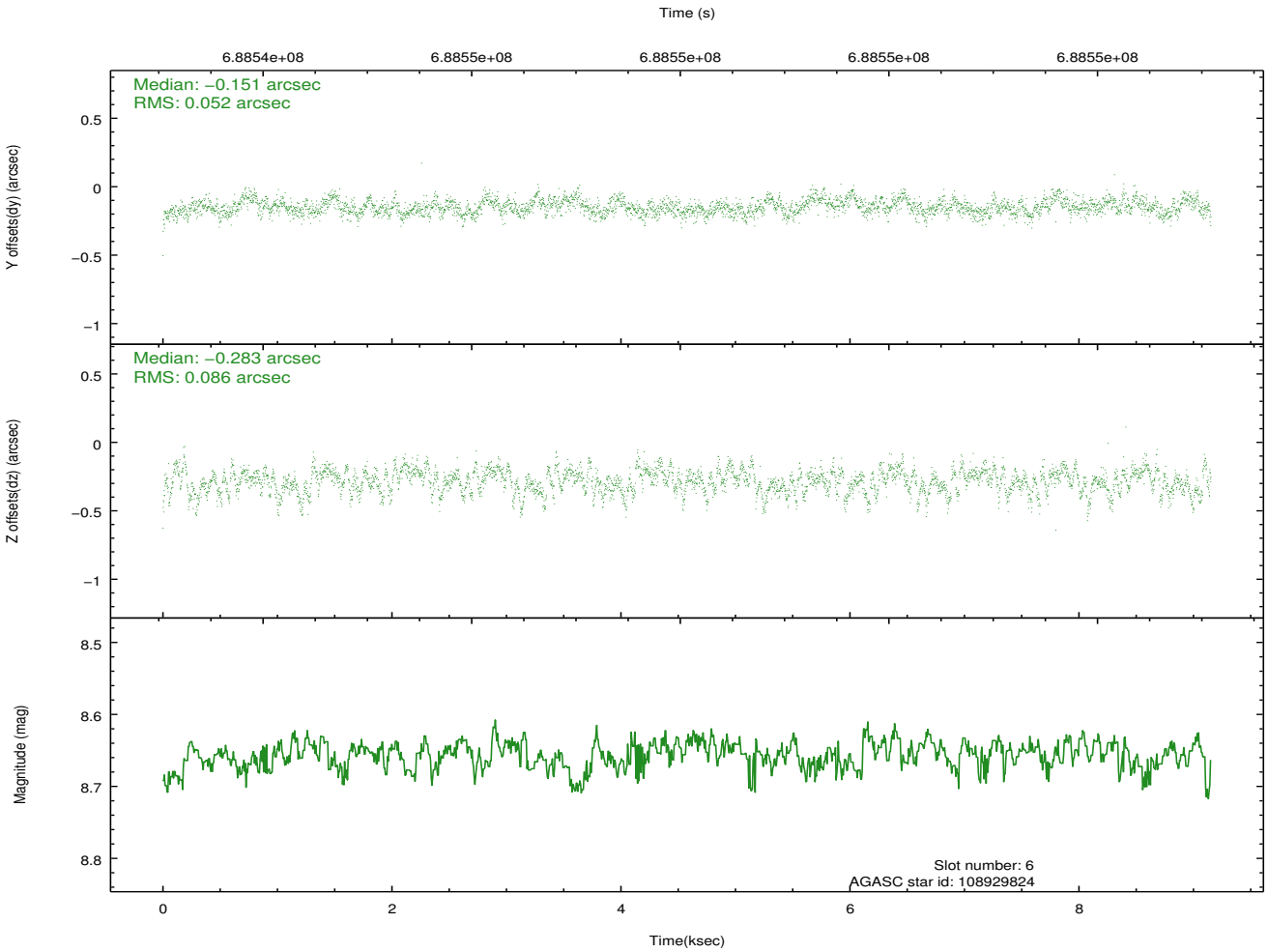
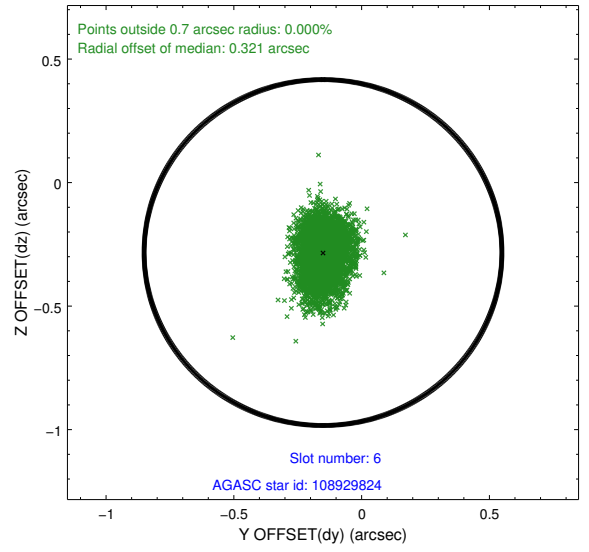
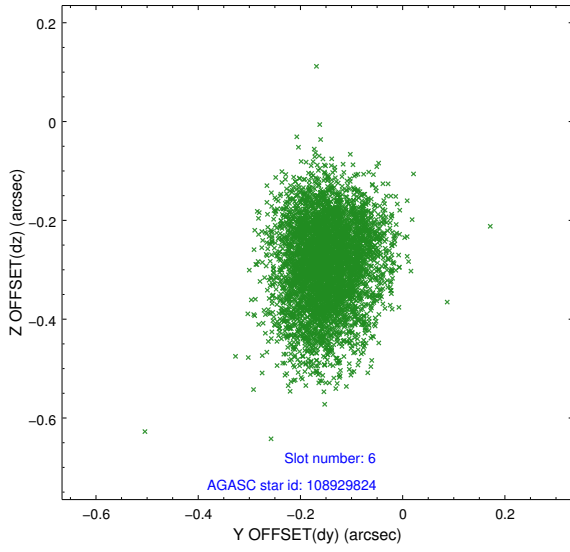
2.4.1 Slot 3



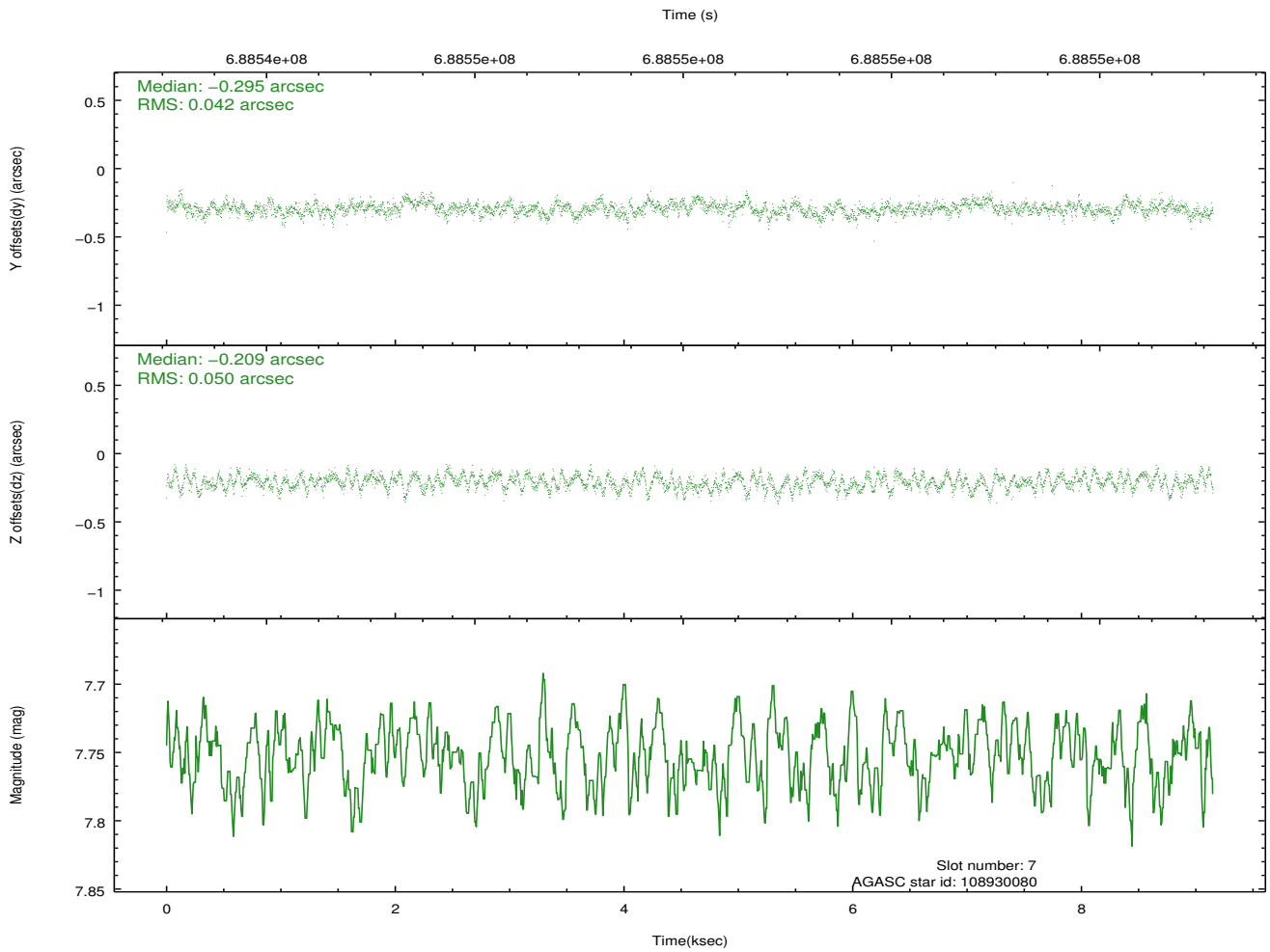
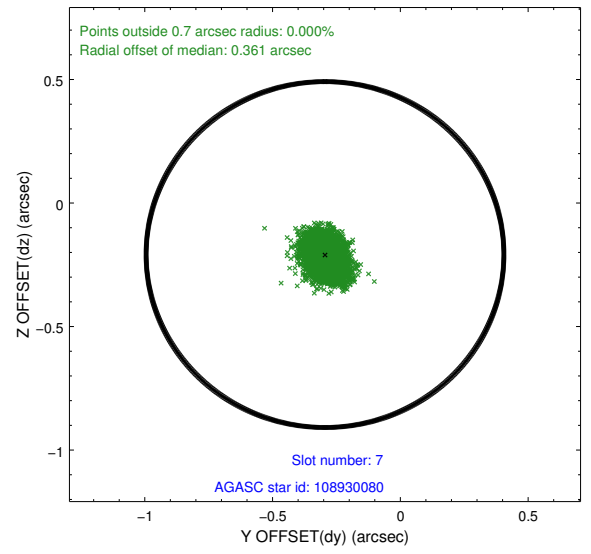
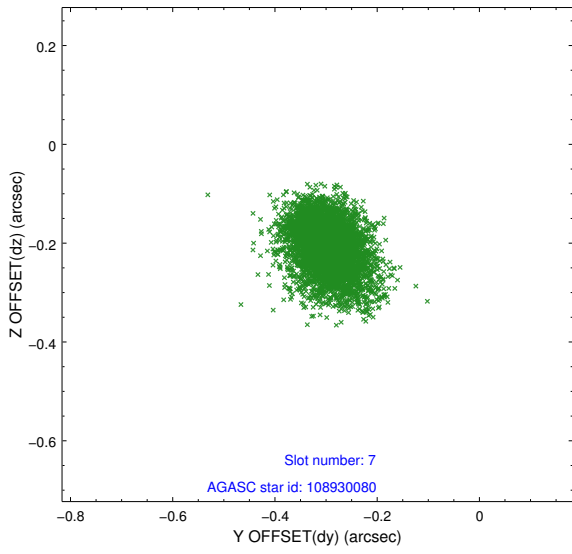
2.4.2 Slot 4



2.4.3 Slot 6

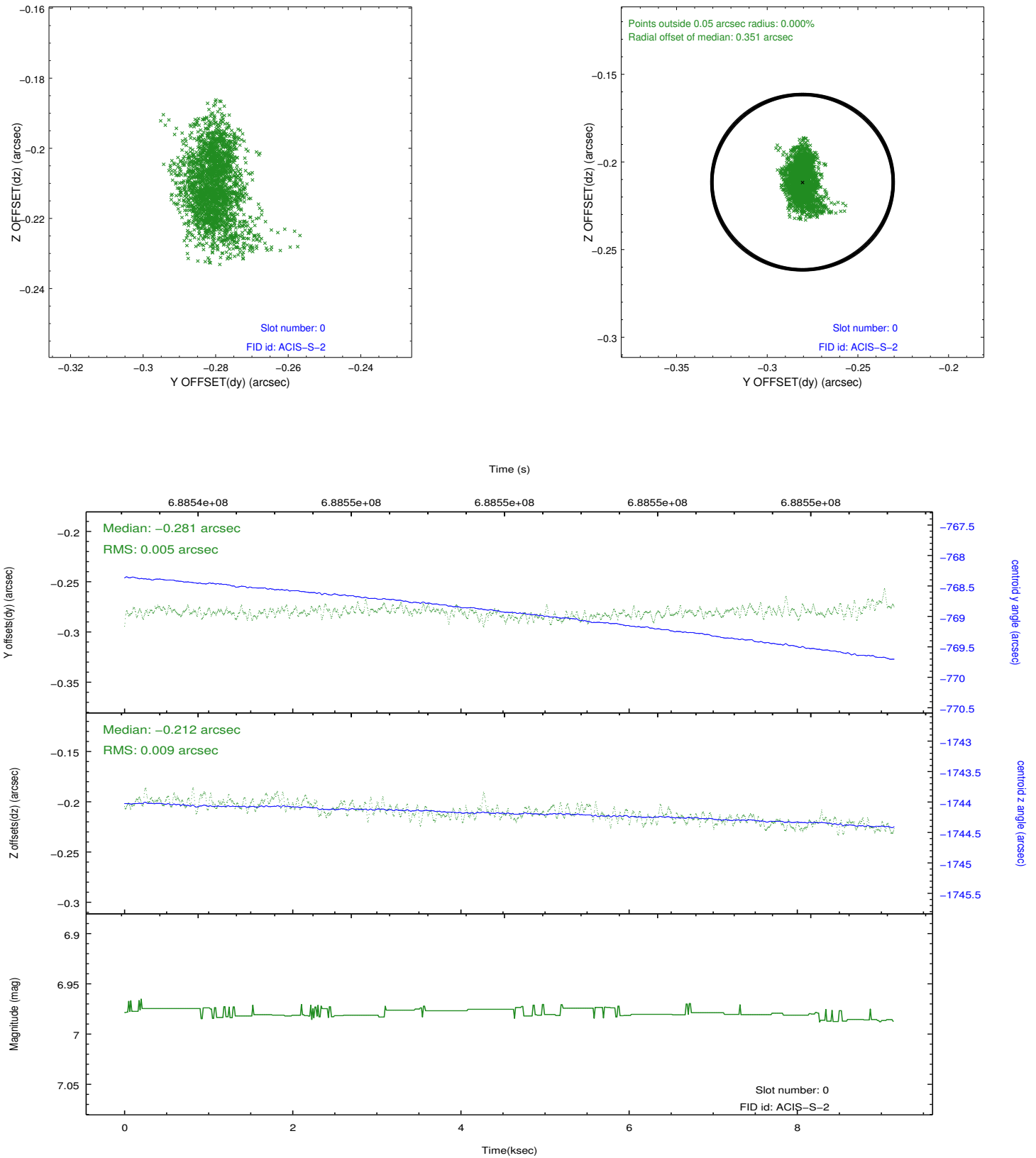


2.4.4 Slot 7

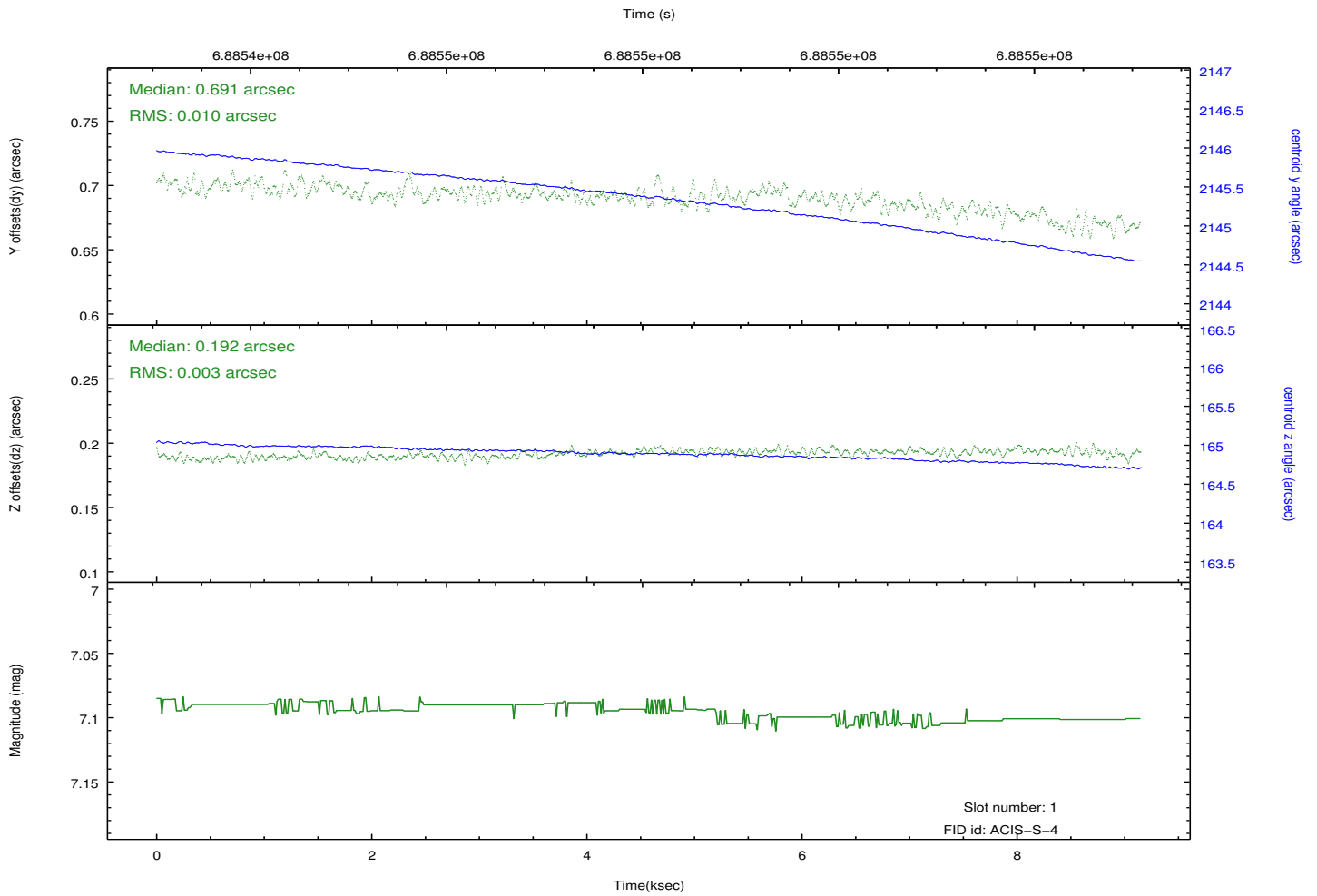
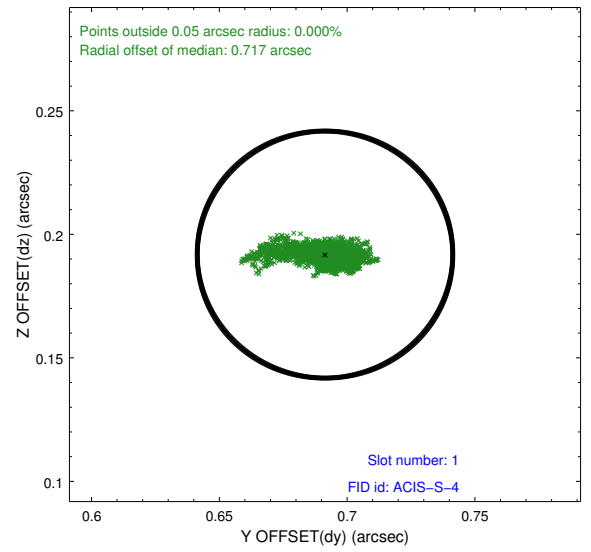
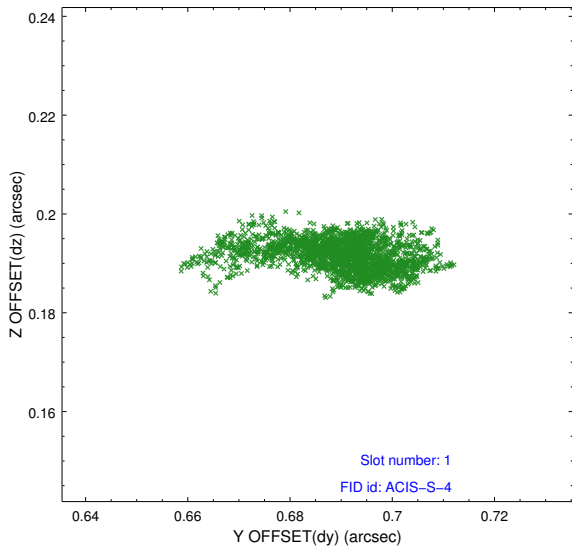


2.5 FID Slots

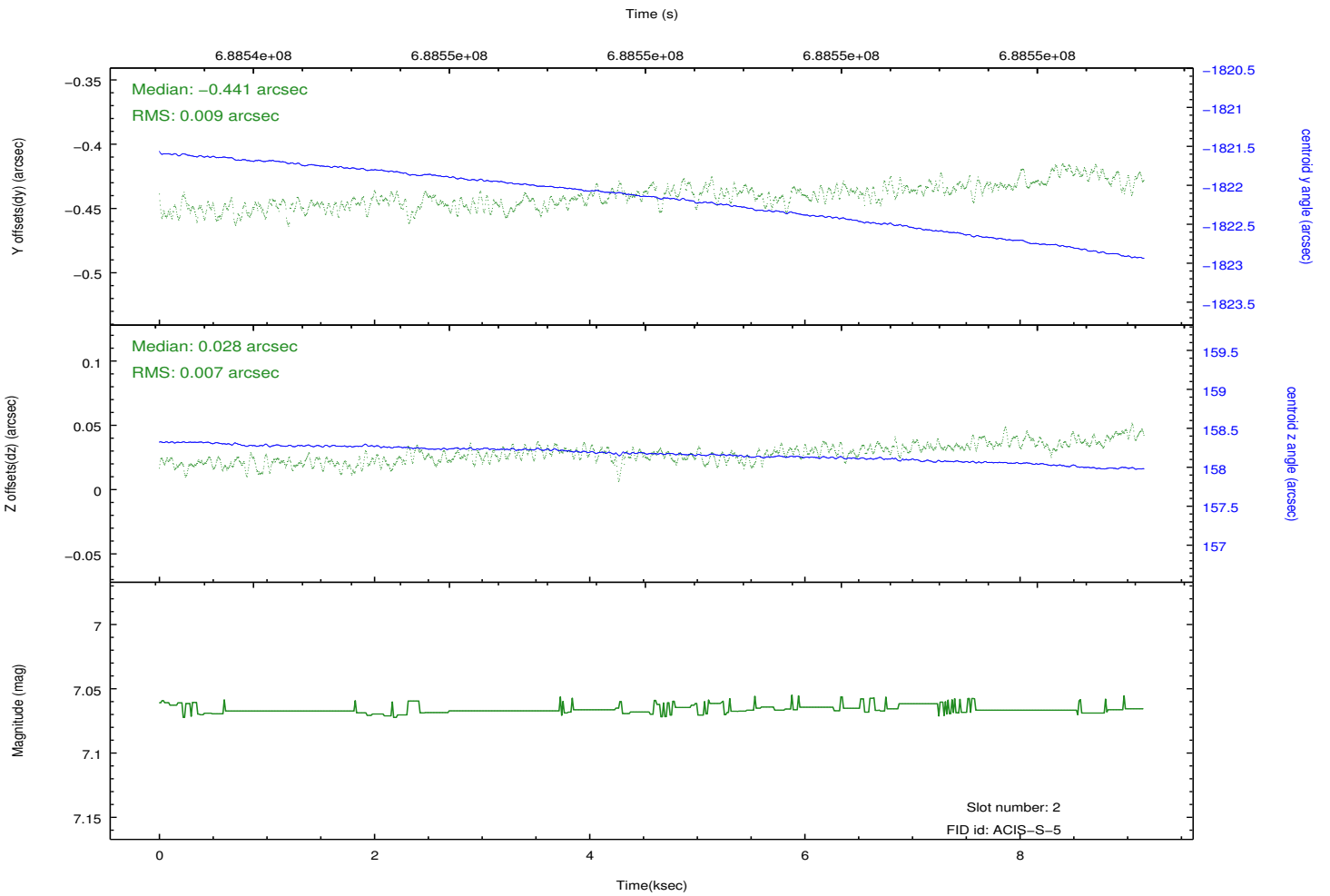
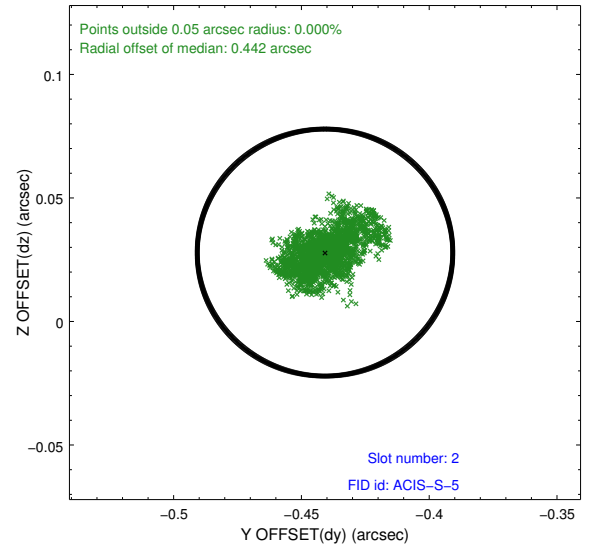
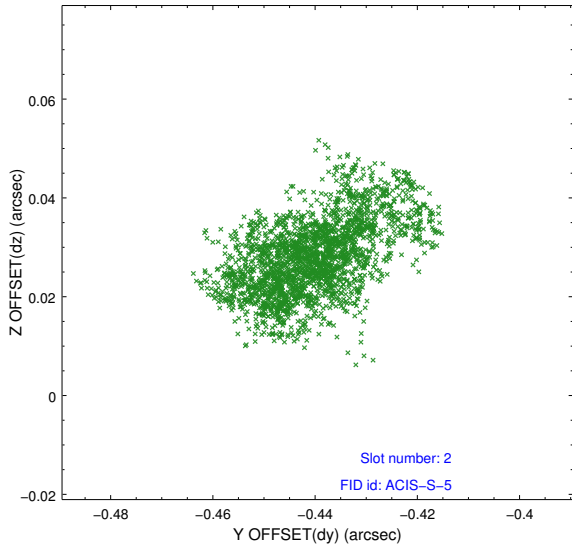
2.5.1 Slot 0



2.5.2 Slot 1



2.5.3 Slot 2



A Summary

A.1 Status

V&V Scientist	Joy Nichols
V&V Date (YYYY-MM-DD)	2019.10.28
V&V Edition	1
V&V Disposition and Status	OK
V&V Charge Time	9.1128022840023

A.2 Comments

The guide star in slot 5 was removed from the aspect solution due to poor data quality. The aspect solution is improved by the removal of this guide star from the solution.